



PMEP

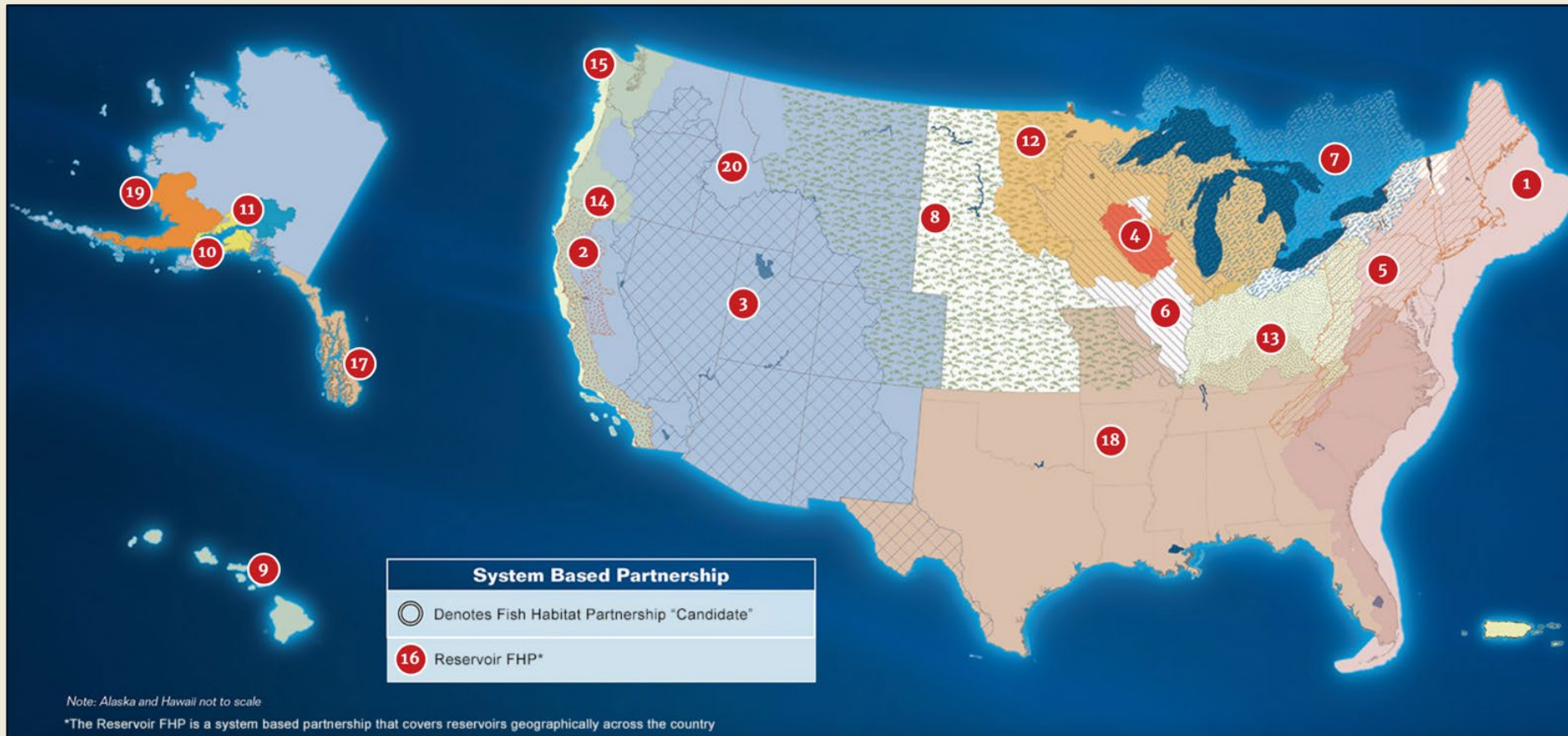
PACIFIC MARINE & ESTUARINE
FISH HABITAT PARTNERSHIP

Nearshore and Estuary Habitat Data

Kate Sherman, ksherman@psmfc.org
Van Hare, vhare@psmfc.org
Brett Holycross, bholycross@psmfc.org

National Fish Habitat Partnership

Mission is to protect, restore, and enhance fish and aquatic communities through partnerships that foster fish habitat conservation



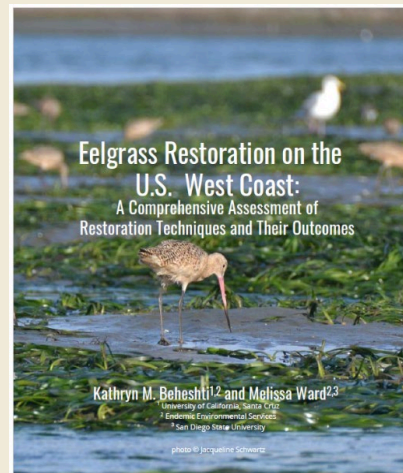
www.fishhabitat.org

Pacific Marine and Estuarine Fish Habitat Partnership

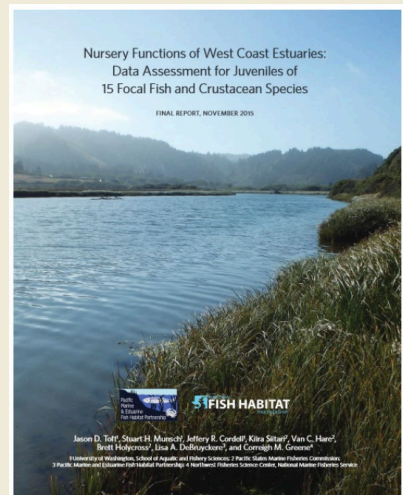
- Gathers expertise to synthesize best available information estuaries, nearshore, and connectivity
- Develops and compiles new datasets to fill high-priority data gaps in our understanding of fish habitats
- Provides targeted funding for high-priority restoration and conservation projects



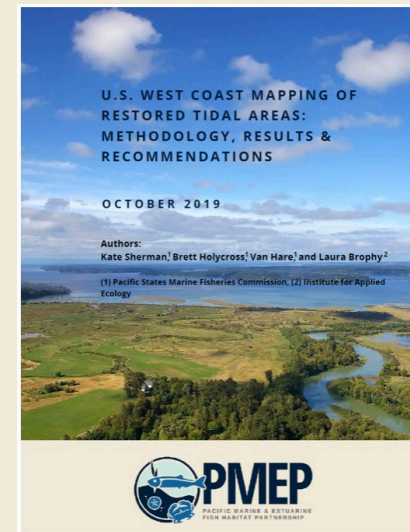
Assessments, Reports, & Literature



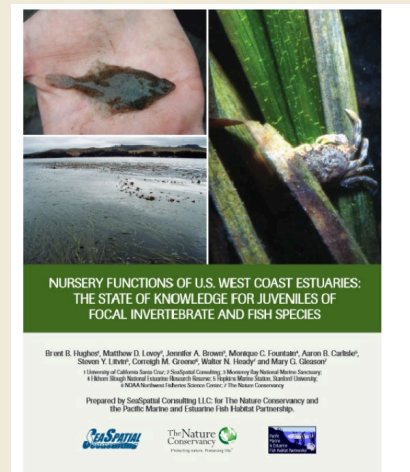
Eelgrass Restoration Synthesis on the U.S. West Coast (2021)



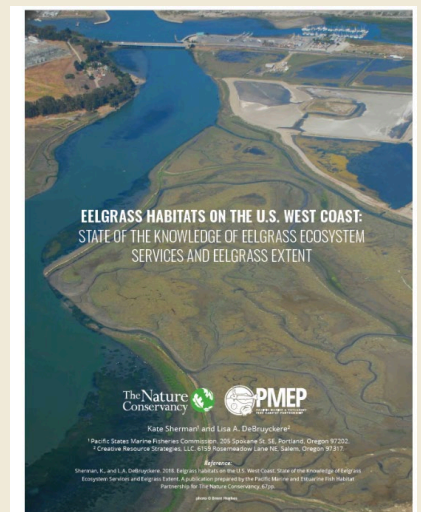
Nursery Functions of West Coast Estuaries: Data Assessment for Juveniles of 15 Focal Fish and Crustacean Species (2015)



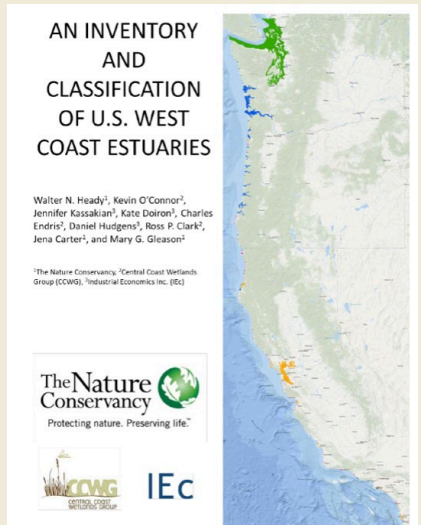
U.S. West Coast Mapping of Restored Tidal Areas: Methodology, Results & Recommendations (2019)



Nursery Functions of U.S. West Coast Estuaries: The State of Knowledge for Juveniles of Focal Invertebrate and Fish Species (2014)



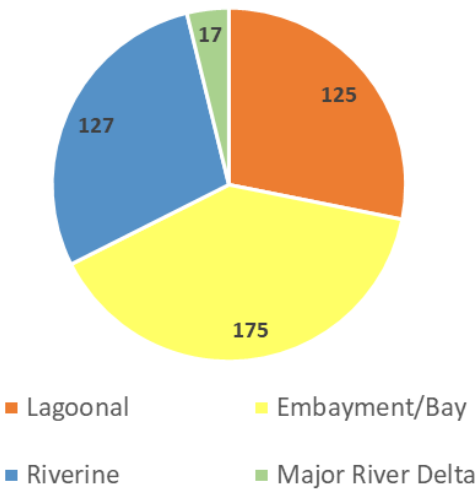
Eelgrass Habitats on the U.S. West Coast: State of the Knowledge of Eelgrass Ecosystem Services and Eelgrass Extent (2018)



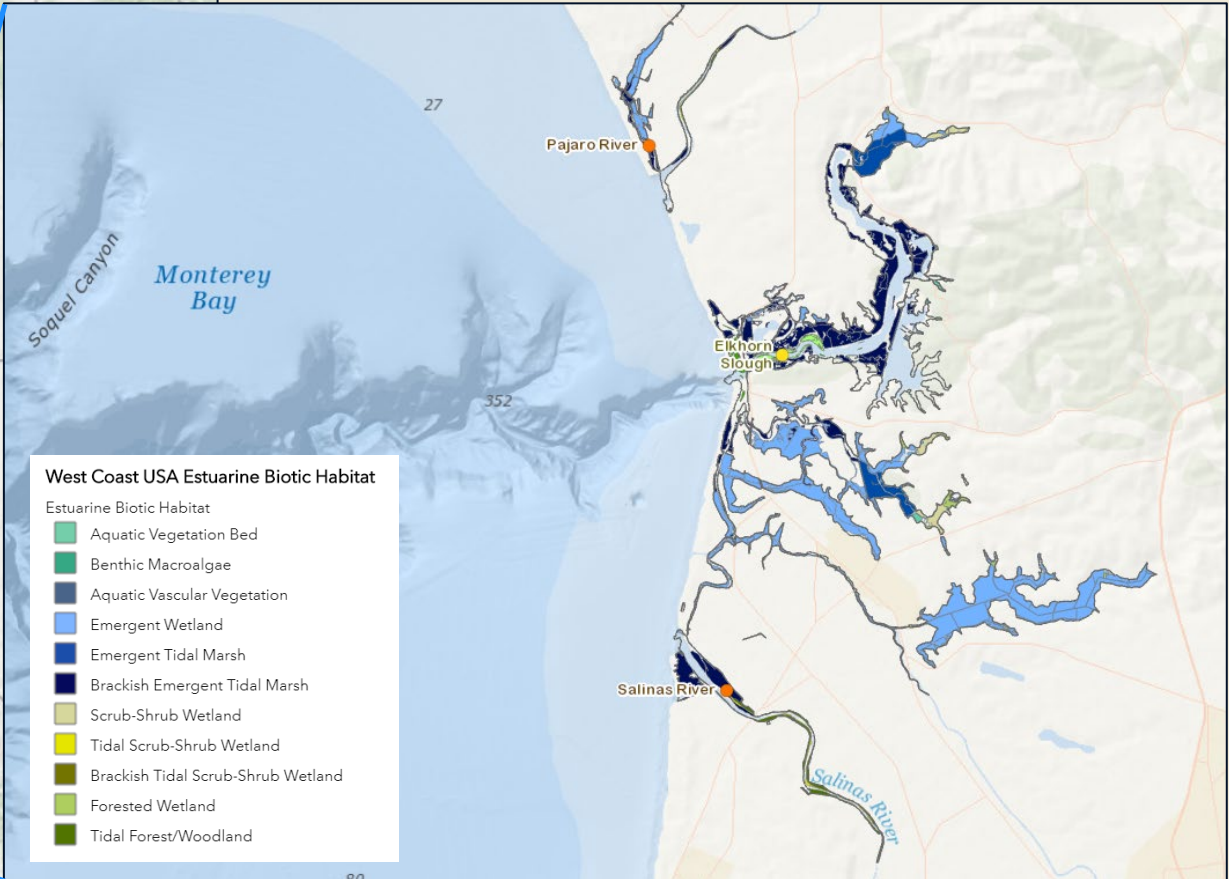
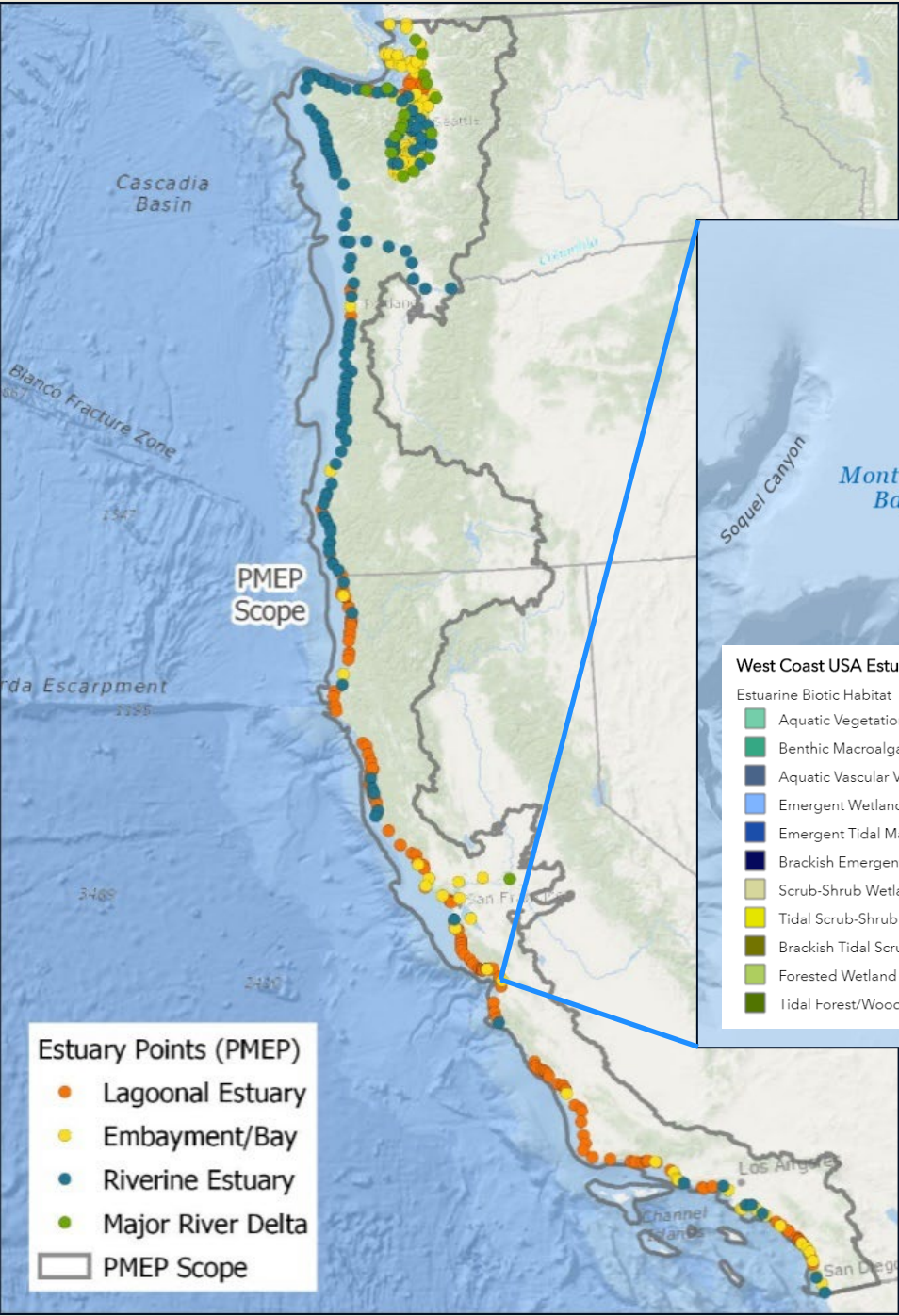
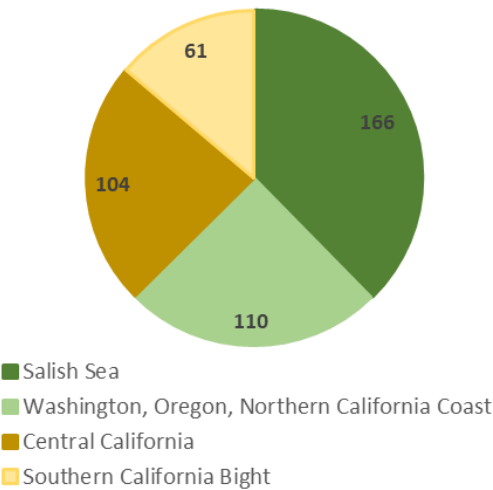
An Inventory and Classification of U.S. West Coast Estuaries (2014)

Estuary Data

PMEP Estuaries by Type

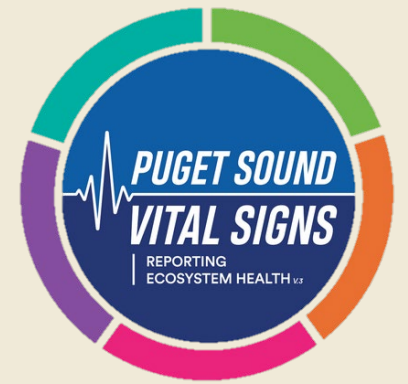


PMEP Estuaries by Region

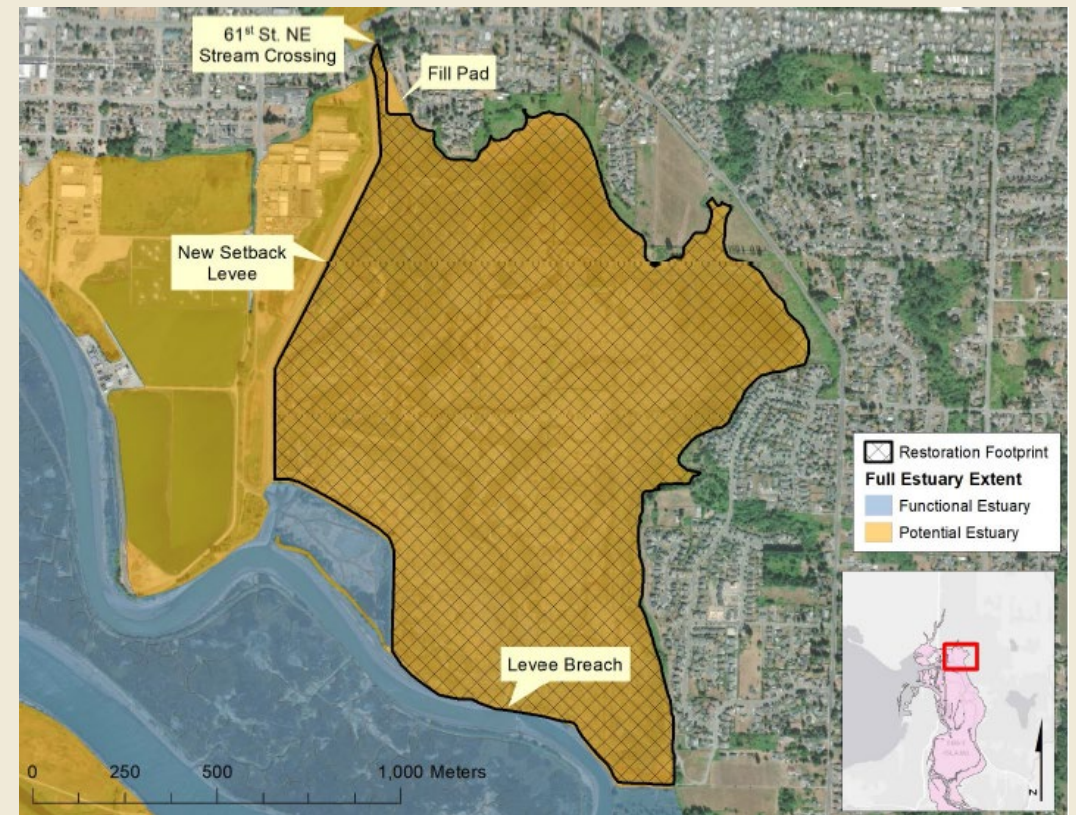


444 Estuaries Mapped

Tracking Estuarine Wetland Restoration in Puget Sound



- The Estuary Vital Sign indicator tracks the amount of land returned to full, natural tidal flooding in Puget Sound's 16 large river deltas
- PMEP's Estuary Extent dataset was used to determine the full potential estuary (including disconnected areas) to determine upper limit of delta boundaries.
- Restoration projects completed within the "potential estuary" are summarized to assess total area of estuarine wetlands restored as part of the Estuaries Vital Sign targets.



Ramirez, M. 2019. Tracking Estuarine Wetland Restoration in Puget Sound; Reporting on the Puget Sound Estuaries Vital Sign Indicator. Report prepared for the Puget Sound Partnership at the University of Washington, Seattle, WA.

Nearshore Habitat Report and Data

- Identified need to understand large-scale processes and connectivity between species and habitats for nearshore and offshore along the U.S. West Coast
- To provide the best available science and inform opportunities to conserve, protect, restore, and enhance fish habitat in nearshore areas

Joseph J. Bizzarro¹, Jamey Selleck², Kate Sherman³, Joan Drinkwin², Van C. Hare³,
David S. Fox⁴

1 UC Santa Cruz

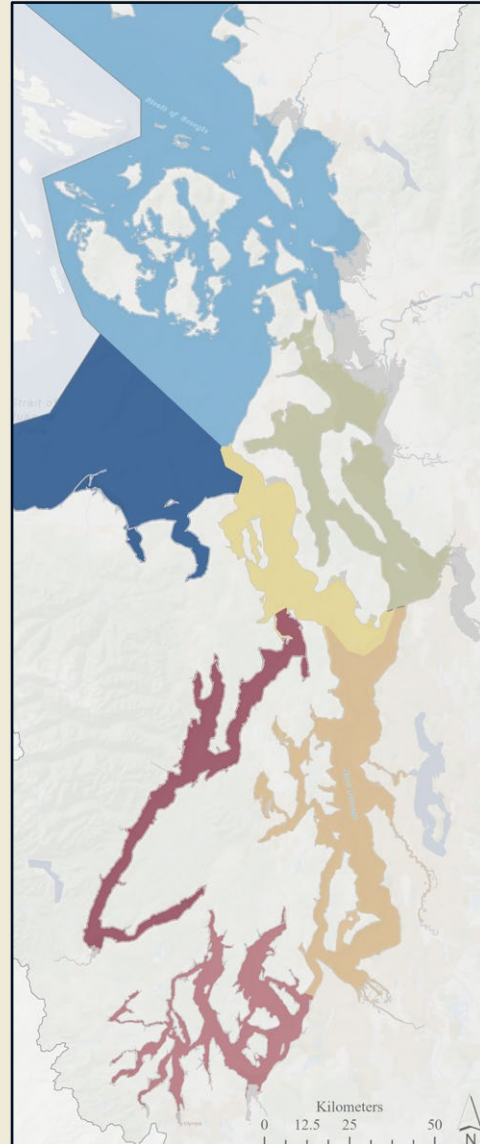
2 Natural Resources Consultants

3 Pacific States Marine Fisheries Commission

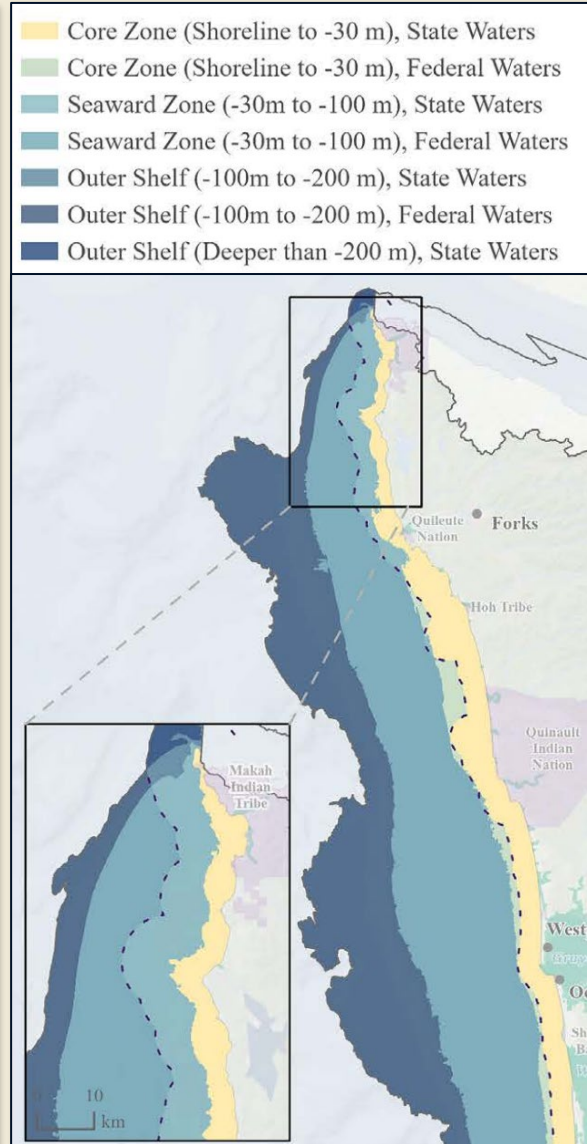
4 Oregon Department of Fish and Wildlife



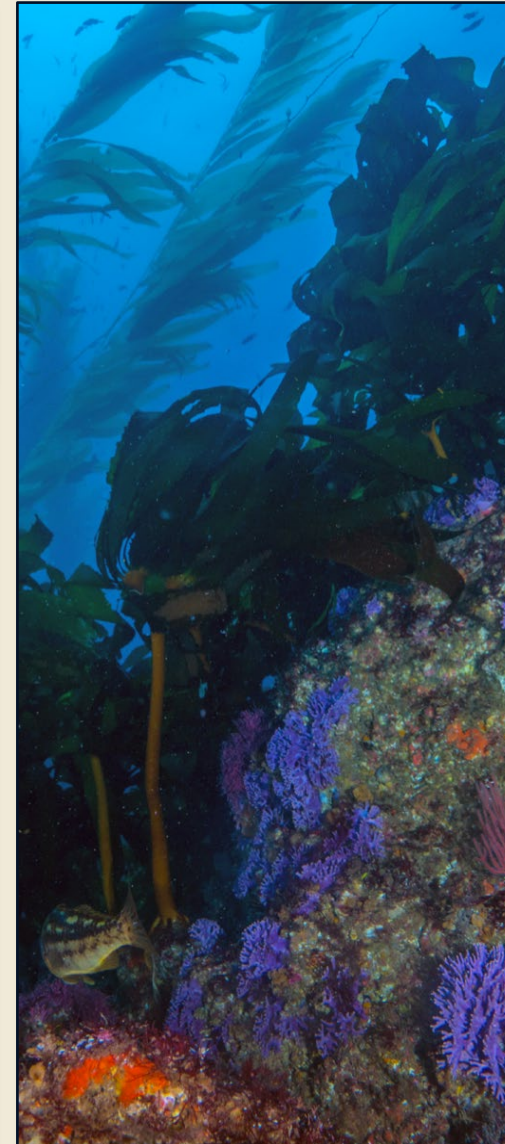
Ecoregions & Subregions



Depth (CMECS aquatic setting subsystem)



Habitats (CMECS substrate and biotic components)



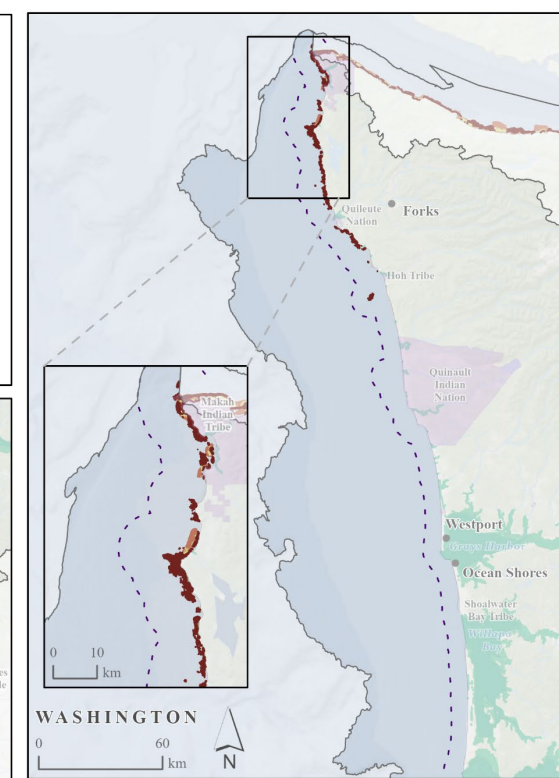
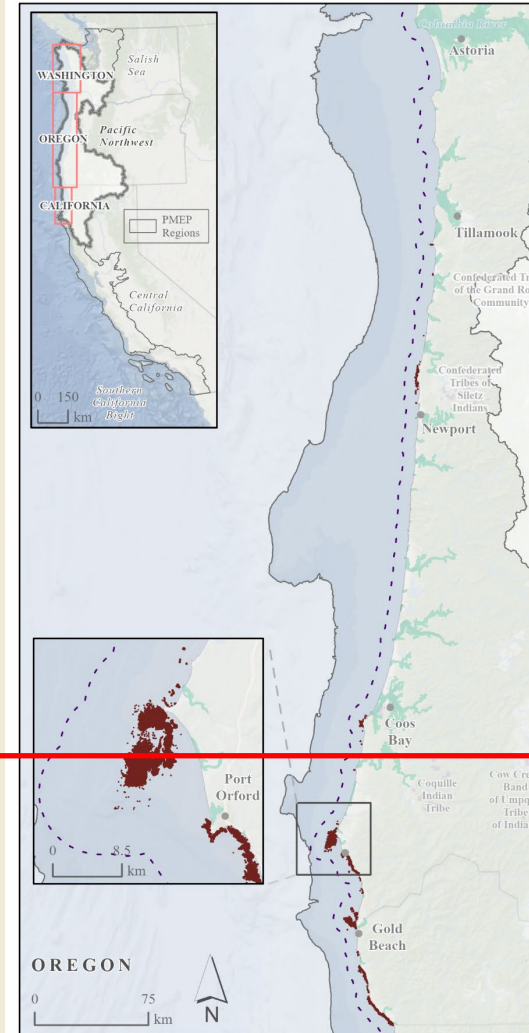
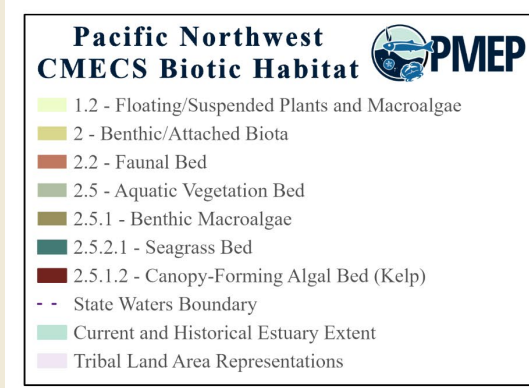
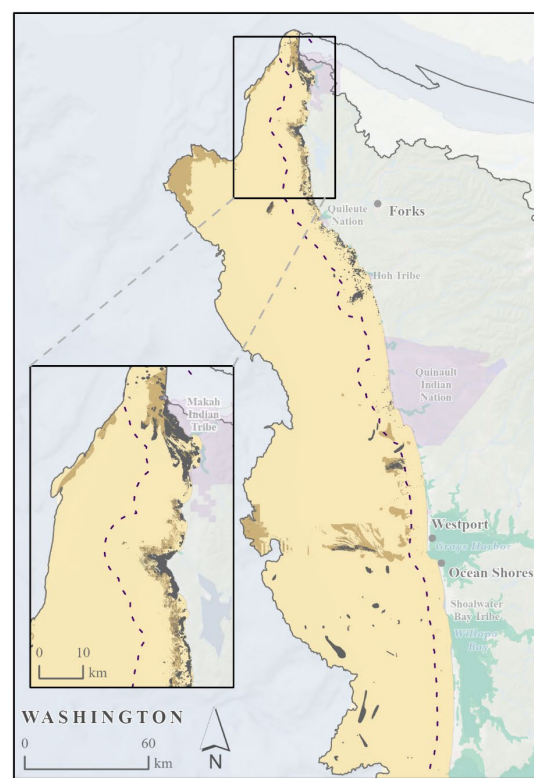
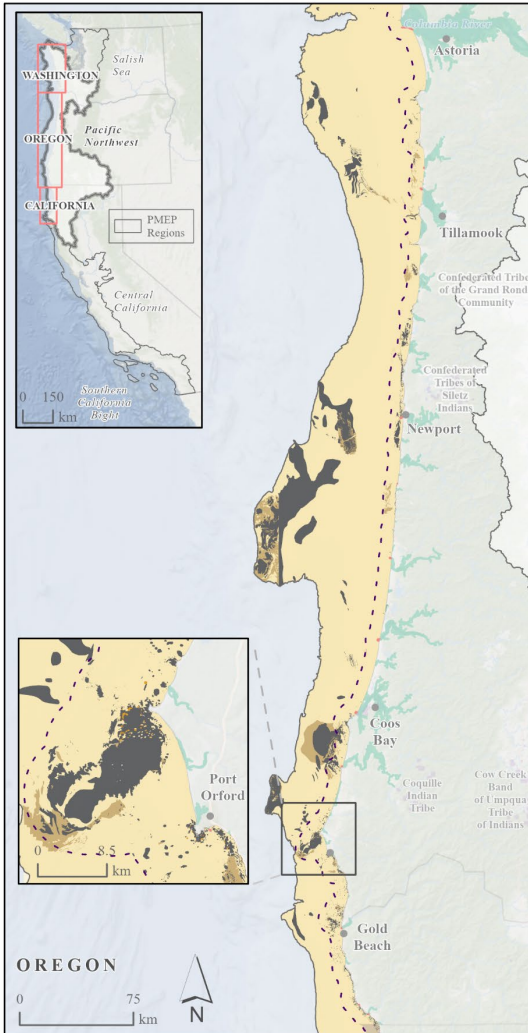
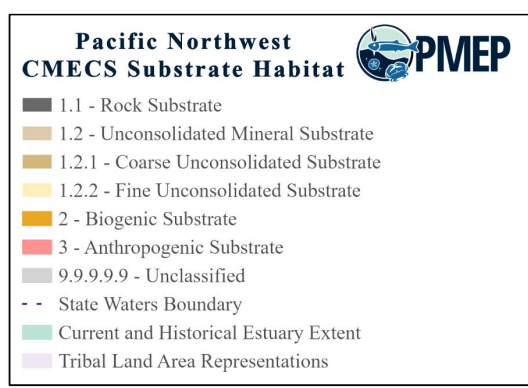
Fishes & Invertebrates



Photo by Adam Obaza
 Fish art by Joe Tomelleri
 Invertebrate art by Claudia Makeyev

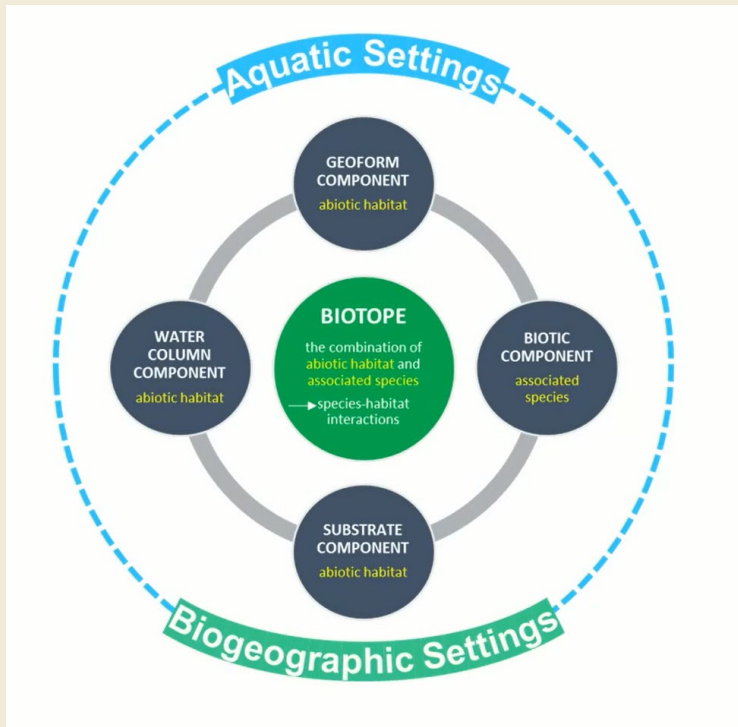
Biotopes

Rock
and
Kelp
In
Core
Zone
(0 – 30m)



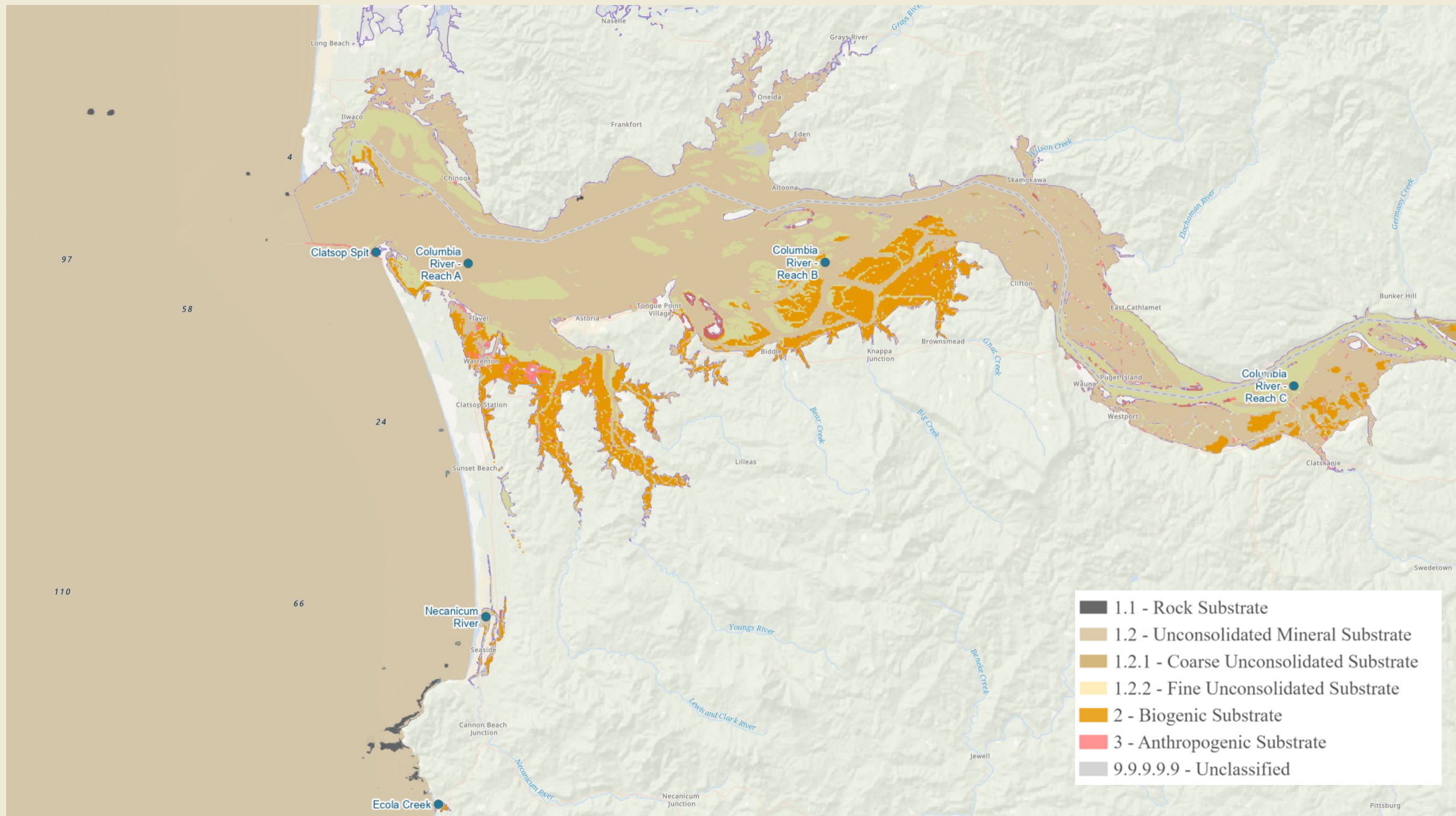
West Coast Spatial Framework

Coastal Marine and Ecological Classification Standard (CMECS)



Recognized by the FGDC as the federal standard for
classifying coastal and estuarine habitats





Rocky Reef Spatial Data Update



Oregon State
University

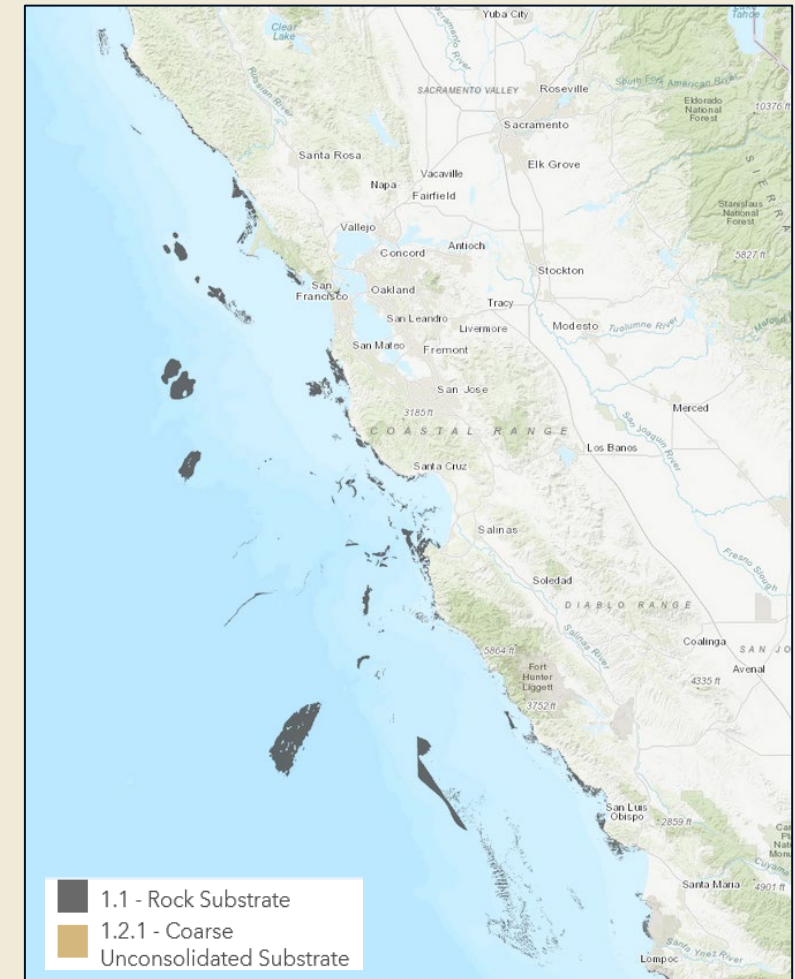


UC SANTA CRUZ

Fisheries
Collaborative Program



- NOAA Fisheries and Pacific Fishery Management Council staff identified a need to update the spatial data for the Rocky Reef Habitat Areas of Particular Concern (HAPC)
- NOAA Fisheries is currently using the updated substrate data in planning of OSW development off the West Coast, but the spatial data will also inform an upcoming review by PFMC of groundfish essential fish habitat beginning in 2025
- PMEP's CMECS substrate dataset was identified as the best available source for West Coast nearshore substrate data
- PSMFC GIS staff are engaged in the working group for the current update to the Rocky Reef spatial data



Data Products

[Home](#) > [Data Products](#)

Applications



PMEP West Coast Estuary Viewer

This map viewer highlights spatial data products developed by PMEP to characterize habitats and synthesize information in support of habitat conservation and restoration goal setting. Most of the data presented in this viewer are available for download below.



West Coast Estuaries Explorer

This application is useful for quickly comparing estuaries to each other along the coastlines of Washington, Oregon, and California. Using dynamic filters and an interactive map you can find estuaries that meet specific criteria; or estuaries that provide habitat for focal species of interest to you.



West Coast USA Current and Historical Estuary Extent

This layer represents the current



PMEP Estuary Points

This layer represents estuaries, as points, in the Pacific Marine and



West Coast USA Estuarine Biotic Habitat

These data represent the Biotic



Indirect Assessment of West Coast USA Tidal Wetland Loss




Geo Platform



Easy access to our spatial data, maps and apps

Featured Content




APP CONSERVATION

Web Mapping Application
PNW Protected Areas & Streams
This map application focusing on the Pacific Northwest presents the Northwest Power and Conservation Council's



APP RESTORATION

Web Mapping Application
California Fish Passage Forum ...
This map shows the locations of projects supported by the California Fish Passage Forum.




APP FACILITIES

Web Mapping Application
Columbia Basin Fish Facilities
This application shows the locations of facilities used for fisheries management or passage within



APP RESTORATION

Web Mapping Application
PMEP Funded Projects
This map shows the locations of projects funded by the Pacific Marine and Estuarine Fish Habitat



APP ESTUARIES

Web Mapping Application
PMEP West Coast Estuary Viewer
This web application highlights spatial data from the Pacific Marine and Estuarine Fish Habitat




MAP MONITORING

Web Mapping Application
StreamNet Mapper web app
A simple mapping application highlighting available data from the StreamNet database, including



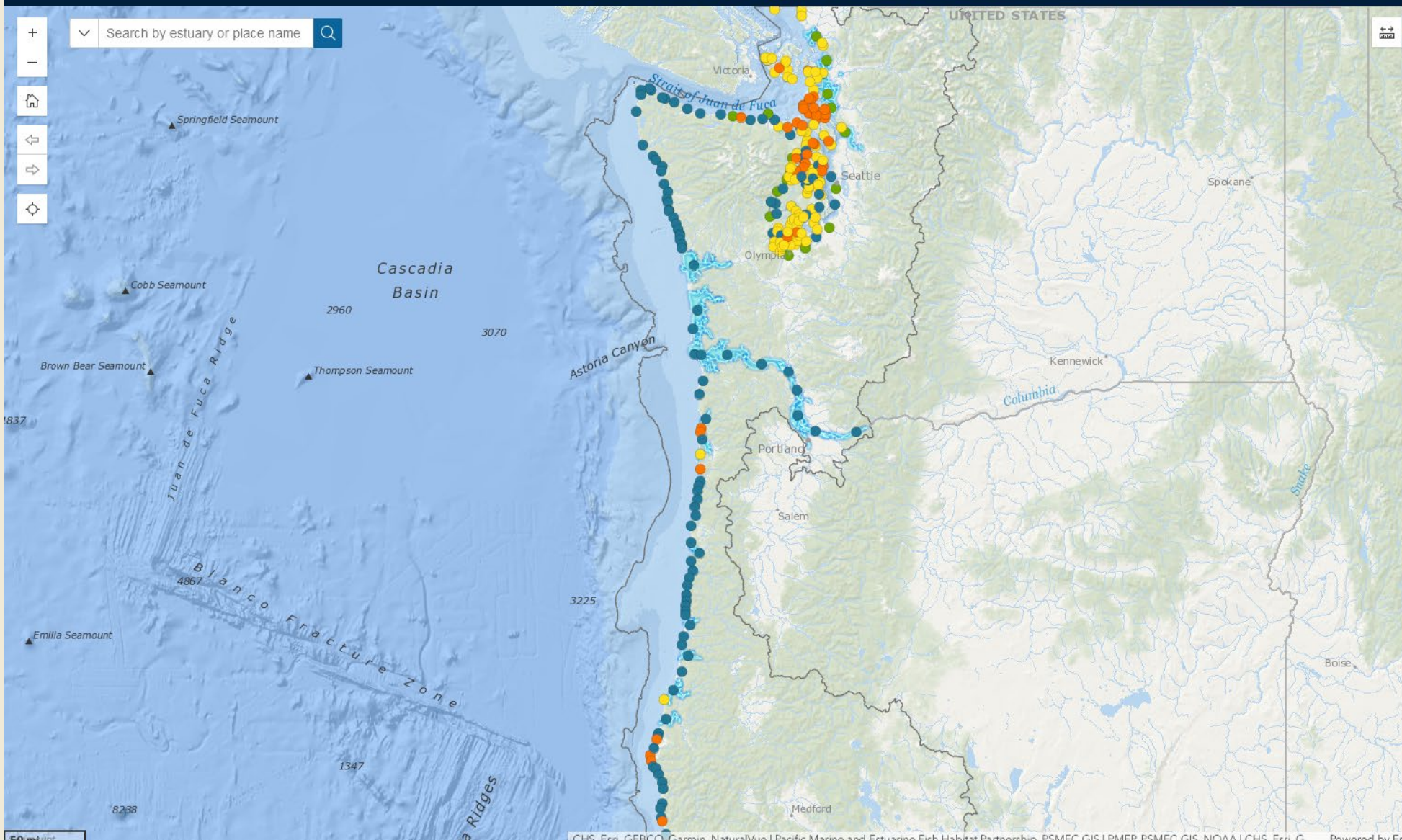
APP MONITORING

Web Mapping Application
PTAGIS Sites
This application displays PTAGIS interrogation and mark/recapture/recovery sites.



MAP ASSESSMENT


Web Mapping Application
Coastal Cutthroat Trout WebApp
A map viewer created to support the Coastal Cutthroat Trout Assessment (<http://>



Data Training and Videos



- PMEP partners with the National Estuarine Research Reserve system to host virtual trainings to provide training on PMEP's data and applications
- Past trainings hosted through Padilla Bay NERR and South Slough NERR, reaching out to CA NERRs for additional trainings
- In October 2024, professionally recording 6 “how-to” videos to supplement hands-on trainings, available on PMEPs website in December 2024



Pacific Marine and Estuarine Fish Habitat Partnership
Padilla Bay National Estuarine Research Reserve Coastal Training Program
PMEP Data Tools Training, February 6 & 7, 2024 10:00AM – 12:30PM

Day 1
Introductions
PMEP Data Tools
Scenario 1 – Comparing Estuaries
Scenario 2 – Risk of Habitat Degradation
Scenario 3 (part 1) - Restoration Planning
PMEP Estuary Viewer
Scenario 3 (part 2) - Restoration Planning
Wrap up & homework
Day 2
Introductions
Scenario 4 – Tidal Wetlands Loss
Scenario 5 – Tidal Swamp Conservation
Scenario 6 (part 1) - Dataset downloading and uploading
Scenario 6 (part 2) – Individual questions
Reflection
Wrap up



Questions?

Kate Sherman, ksherman@psmfc.org

Van Hare, vhare@psmfc.org

Brett Holycross, bholycross@psmfc.org