



Washington Department of Fish and Wildlife

Director's Office Update

NATE PAMPLIN, DIRECTOR OF EXTERNAL AFFAIRS

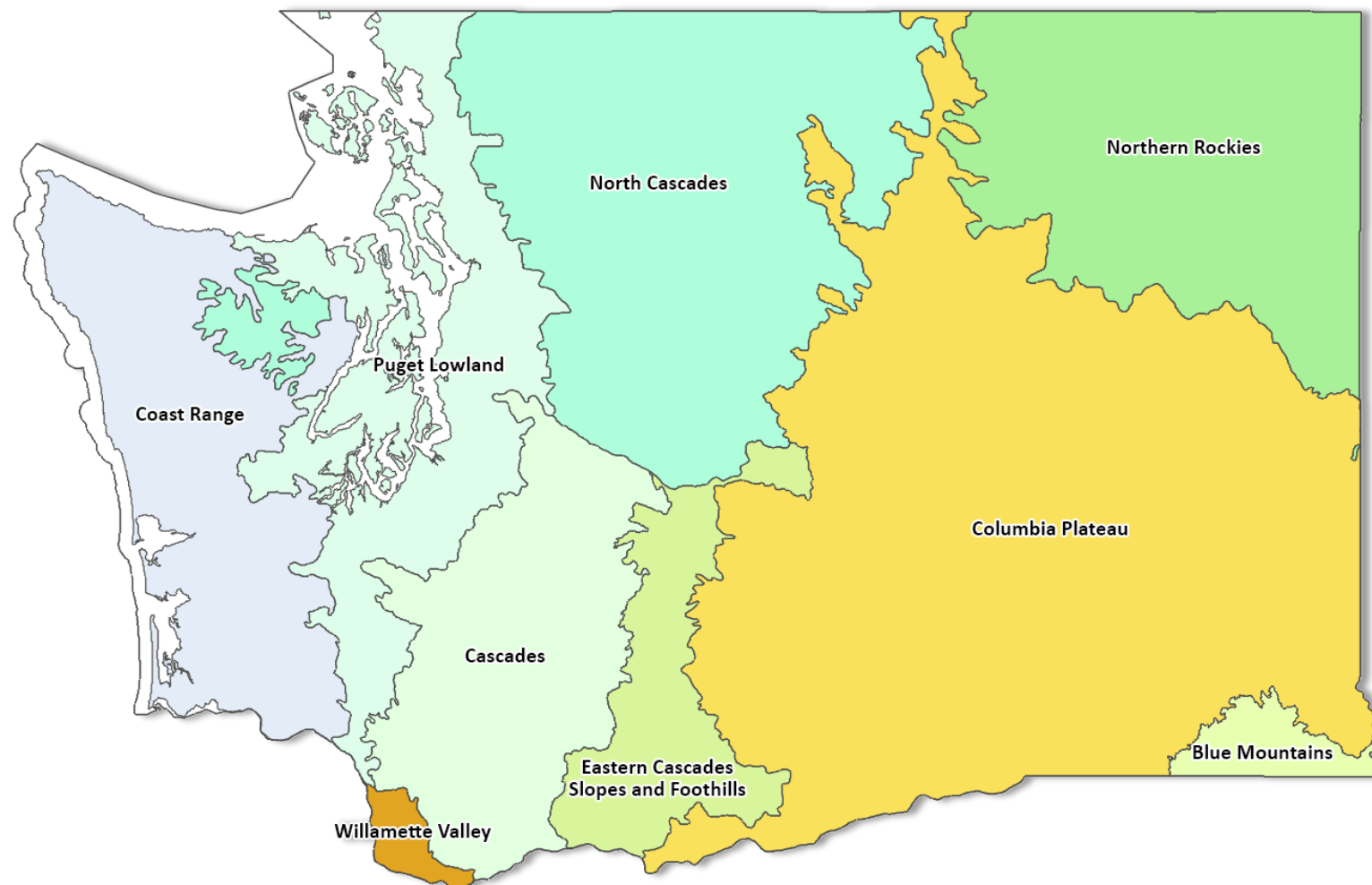
WDFW Workforce and Regions

About WDFW:

- Headquarters in Olympia
- Six regional offices
- Over 2,400 employees
- **2023-25 budget:**
 - \$760M operating
 - \$347M capital
- **WDFW manages:**
 - 1M acres of public land
 - 500+ water access areas
 - 81 fish hatcheries

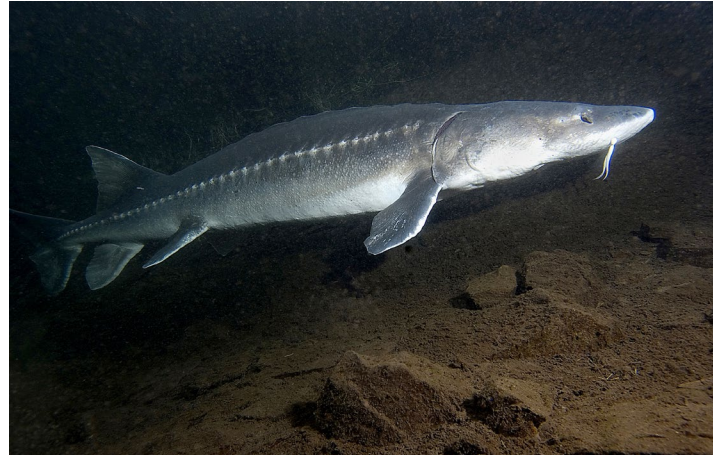


Ecoregions of Washington



**Washington is
home to nine
ecoregions.**

Biodiversity Funding



Southern Resident Killer Whale Recovery



Pinniped Conservation and Management



European Green Crab



Invasive Zebra Mussels in Aquarium Moss Balls



Staff Safety



Questions?



Washington
Department of
**FISH &
WILDLIFE**