

NOAA Update: Accomplishments, Priorities, and Challenges



Jennifer Quan, Regional Administrator
West Coast Region (AND Team)

Pacific States Marine Fisheries Commission

September 9, 2024

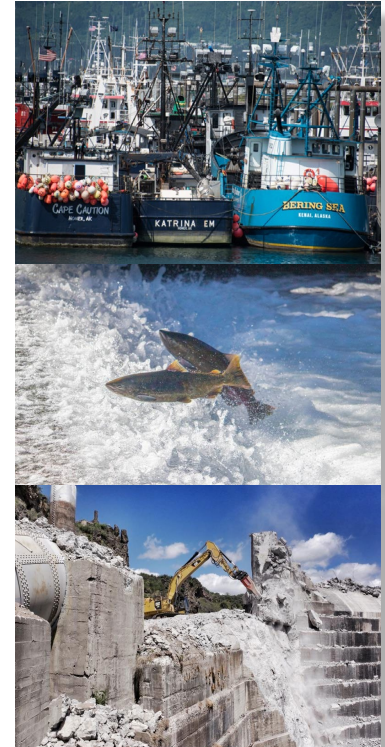
Monterey, CA



National Perspective

ACCOMPLISHMENTS	PRIORITIES	CHALLENGES
<ul style="list-style-type: none"> NMFS - IRA/BIL Funding* <ul style="list-style-type: none"> Habitat (\$1.4 B) Tribal Hatcheries (\$300M) RFMC (\$20M) CEFI (\$40M) Pacific Salmon Science (\$42M) Essential Data Acquisition. (\$107.5M) Southeast Alaska Ruling Klamath Dam Removal 	<ul style="list-style-type: none"> IRA/BIL Implementation Seafood Strategy Equity and Environmental Justice Strategy & Regional Implementation Plans Offshore Wind 	<ul style="list-style-type: none"> Grants Management Disaster Funds Litigation ESA Listing Petitions

*list below in not inclusive of all funds

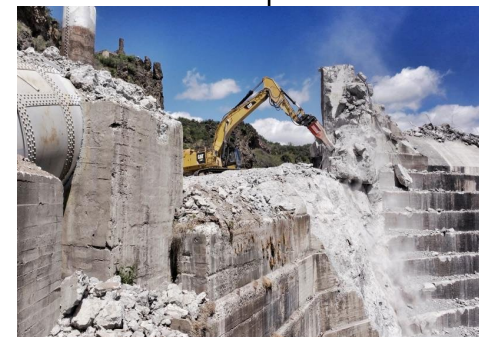




Regional Perspectives

ACOMMPLISHMENTS

West Coast	Alaska	Pacific Islands
REGION: <ul style="list-style-type: none"> ✓ IRA/BIL funding <ul style="list-style-type: none"> - Tribal Hatcheries (\$300M) - 100% - PCSRF (\$187M) - 65% ✓ Columbia River & P2IP Settlement Agreements ✓ Klamath Dam Removal = 400+ miles of free flowing river ✓ CA Central Valley MOU Tuolumne and Merced Rivers – exploring passage ✓ RCA opening ✓ Makah Tribes – Whaling Waiver SCIENCE CTRS: <ul style="list-style-type: none"> ✓ EEJ Implementation Plan ✓ IRA planning, staffing, and partnerships ✓ Integrated Survey net test 	REGION: <ul style="list-style-type: none"> ✓ Abundance-based management of halibut bycatch ✓ EM for pollock trawl catcher vessels and tenders ✓ New federally-managed Cook Inlet EEZ salmon fishery (court order) ✓ AVERTING SHUTDOWN of Southeast Alaska salmon fisheries – completion of BiOps and EIS's SCIENCE CTR: <ul style="list-style-type: none"> ✓ EBFM assistance to understand stock responses to heatwaves ✓ Climate projections capacity - ACLIM to CEFI ✓ Relationships and analyses to support the current seafood industry crisis 	REGION & SCIENCE CTR: <ul style="list-style-type: none"> ✓ Improved community engagement for better stock assessment ✓ Issued Equity and Environmental Justice Implementation Plan ✓ Secured increase in tuna quota for HI longline fleet through WCPFC



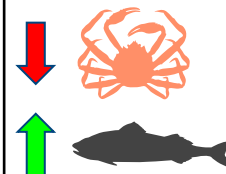
PRIORITIES

West Coast	Alaska	Pacific Islands
<p>REGION:</p> <ul style="list-style-type: none"> • Offshore Wind • Take Reduction Team • Predation • Fish Passage and reintroductions projects • Right sizing work to achieve mission and match workforce size <p>SCIENCE CTRS:</p> <ul style="list-style-type: none"> • IRA Implementation: CEFI, Pacific Salmon Science, Integrated Survey, Advanced Technologies, Data Modernization • Surveys, stock assessments, PFMC support, fisheries, protected resources, and ecosystem science 	<p>REGION:</p> <ul style="list-style-type: none"> • Partnership with ADF&G and PSMFC • Execution of AKR Strategic Plan <p>SCIENCE CTR:</p> <ul style="list-style-type: none"> • Survey modernization and expansion to meet shifting stocks • Provision of EBFM data for incorporation into management 	<p>REGION & SCIENCE CTR:</p> <ul style="list-style-type: none"> • Transition to EM in observer programs • Gear to eliminate/reduce impacts of protected resources interactions • Data Modernization, Management and Accessibility (PIFSC) • Climate impacts to stocks (fish and protected species)



CHALLENGES

West Coast	Alaska	Pacific Islands
<p>REGION:</p> <ul style="list-style-type: none"> • Columbia River Settlement • International Treaty Negotiation • Monitoring Klamath • California Salmon Fisheries • Listings and Petitions <p>SCIENCE CTRS:</p> <ul style="list-style-type: none"> • Funding (IRA funding ending) • Surveys (days at sea, advancing tech, downstream data analysis/stock assessment) • New and emerging priorities - related to climate, ecosystems, and offshore wind energy 	<p>REGION:</p> <ul style="list-style-type: none"> • Litigation and petitions upend our priorities and consume scarce resources • ESA status review for Gulf of Alaska Chinook • IPHC's insufficient funding forces curtailing annual survey, with coastwide implications • Difficulties with grants administration (including disasters) affects States and PSMFC <p>SCIENCE CTR:</p> <ul style="list-style-type: none"> • Climate mediated stock crashes • Climate mediated success stories • Global markets • Socio-econ needs to serve communities 	<p>REGION & SCIENCE CTR:</p> <ul style="list-style-type: none"> • Reduction in observer coverage for HI longline fleet • Data poor stocks in HI and Territories • Listing and critical habitat litigation and petitions • Sustaining surveys (white ships, charters, and UxS)





Questions?