

**NOAA  
FISHERIES**

**West Coast  
Region**

# **West Coast Region**

## **Accomplishments and Priorities**

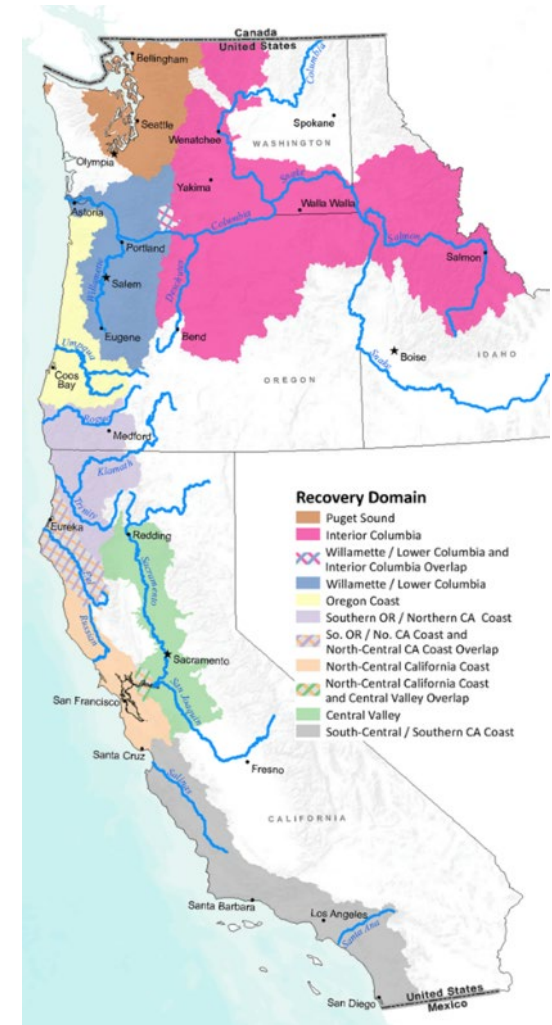
**Pacific States Marine Fisheries Commission  
Annual Meeting  
August 24, 2021**

**Barry A. Thom  
Regional Administrator  
NOAA Fisheries West Coast Region**

# Outline of Topics:

## WCR Accomplishments and Priorities:

- I. Advance Reintroduction Efforts for At-Risk Species
- II. Advance Authorization of Deep-Set Buoy Gear to Harvest Swordfish
- III. Salmon Harvest Litigation and Amendment 21
- IV. Electronic Monitoring Program
- V. Complete and Advance Priority ESA Consultations
- VI. Engage Partners to Enhance Conservation
- VII. Protect and Conserve Anadromous Fish Habitat



West Coast Region

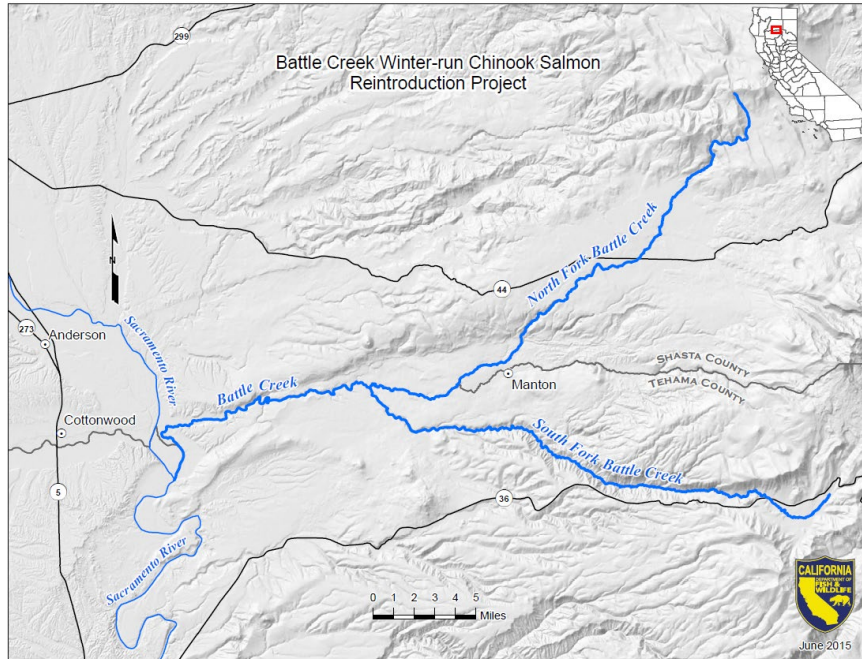
# I. Advance Reintroduction Efforts for At-Risk Species

- Continue experimental outplanting efforts to advance endangered white abalone recovery.



# I. Advance Reintroduction Efforts for At-Risk Species

- Continue to support efforts to reintroduce salmonids in the Sacramento River Basin

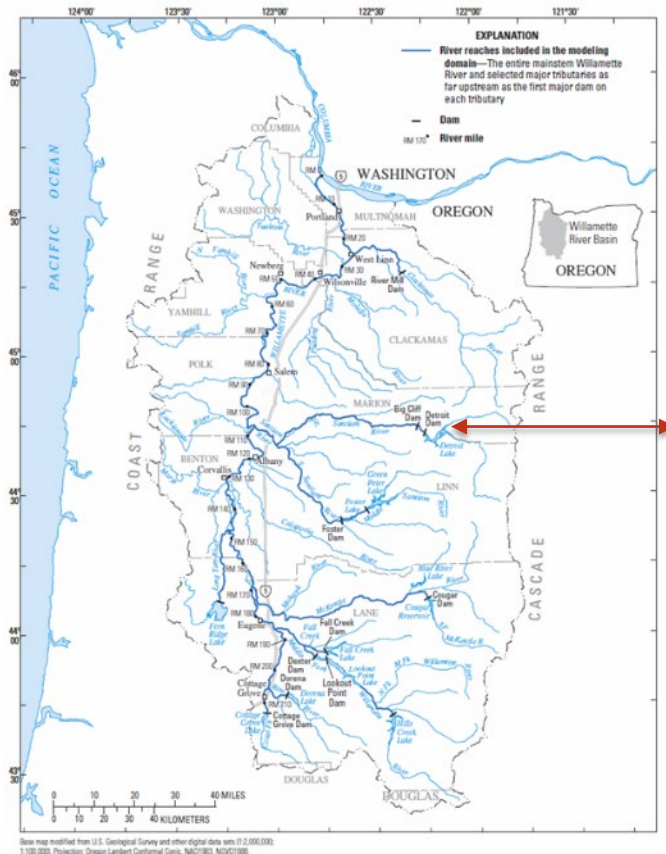


Caption: Winter-run Chinook salmon juveniles in Battle Creek.  
Photo Credit: California Department of Fish and Wildlife



# I. Advance Reintroduction Efforts for At-Risk Species

- Assist partners in improving upstream and downstream passage for salmonids in the Willamette Valley.



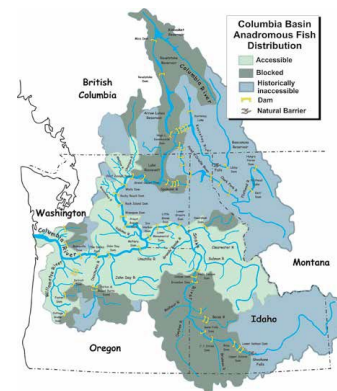
Detroit Dam

# I. Advance Reintroduction Efforts for At-Risk Species

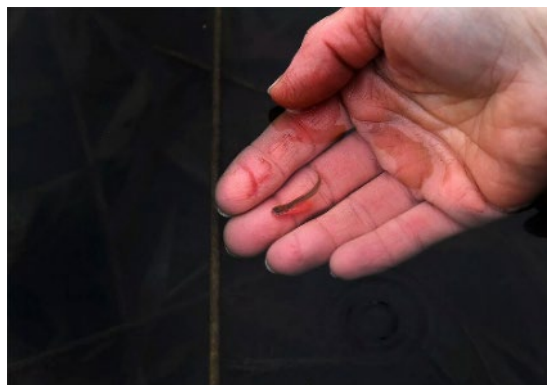
- Continue to support tribal-led efforts to reintroduce salmonids into the upper Columbia River basin.



Credit: The Spokesman-Review



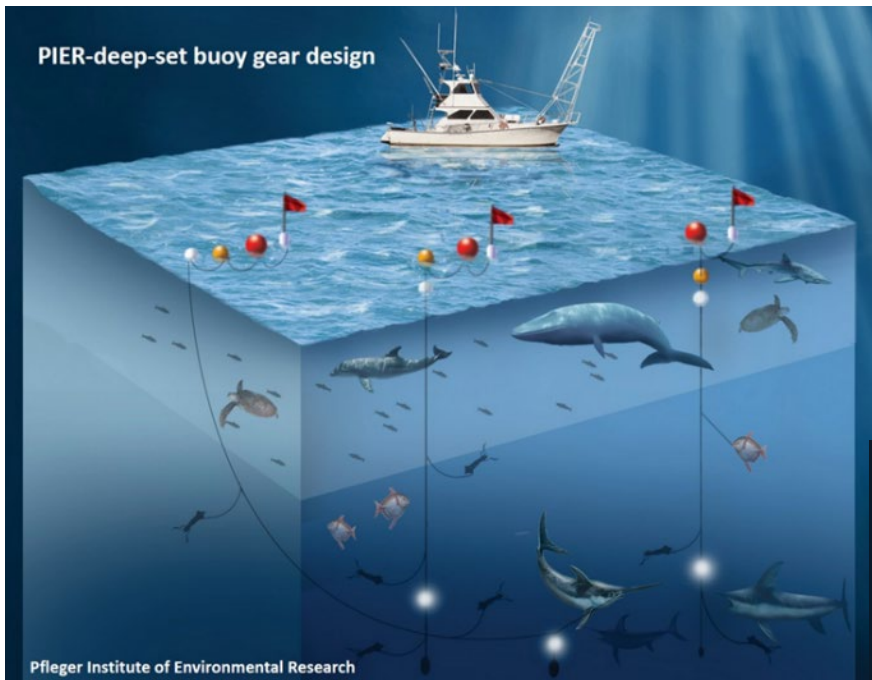
Caption: August 2019, members of the Colville Confederated Tribes released 30 salmon into the Columbia River upstream of the Chief Joseph Dam.



Credit: The Spokesman-Review

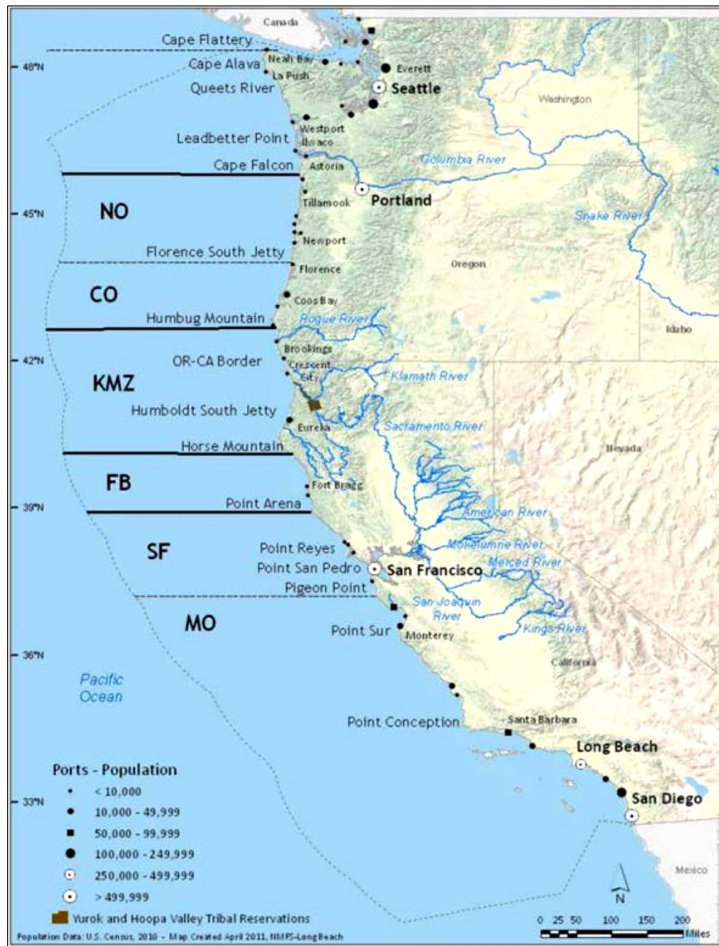
Caption: April 2021, a Chinook salmon alevin in Tshimakain Creek; a tributary to the Spokane River.

## II. Advance Authorization of Deep-Set Buoy Gear to Harvest Swordfish

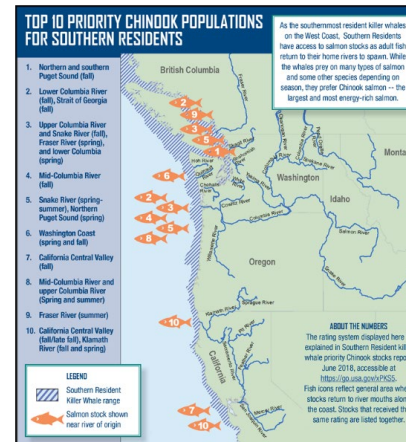




### III. Salmon Harvest Litigation and Amendment 21



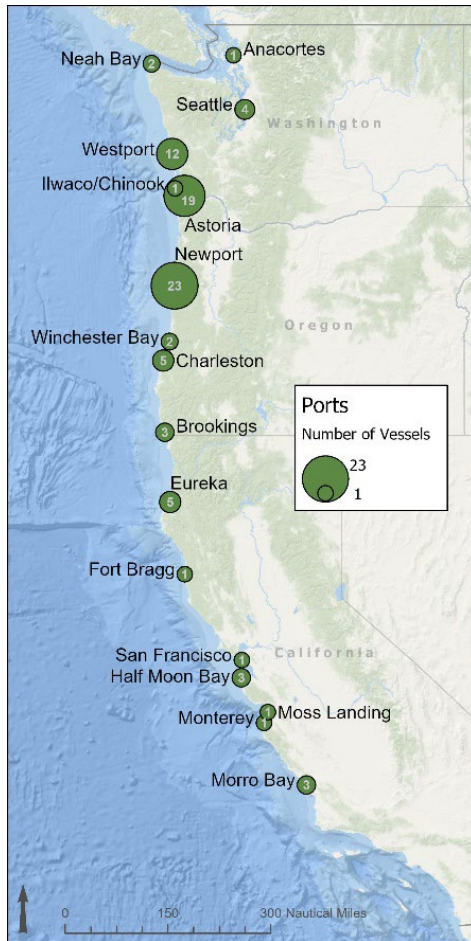
Major salmon fishery management boundaries.



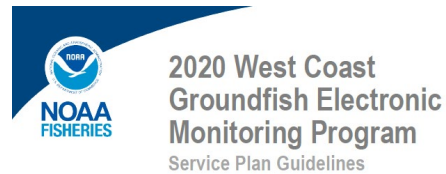
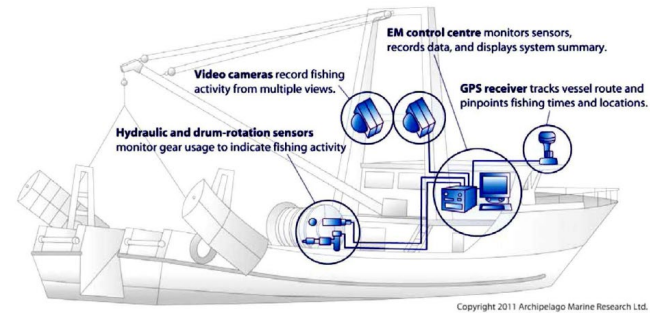
John R. McMillan/NOAA Fisheries



## IV. Electronic Monitoring in the Groundfish Program

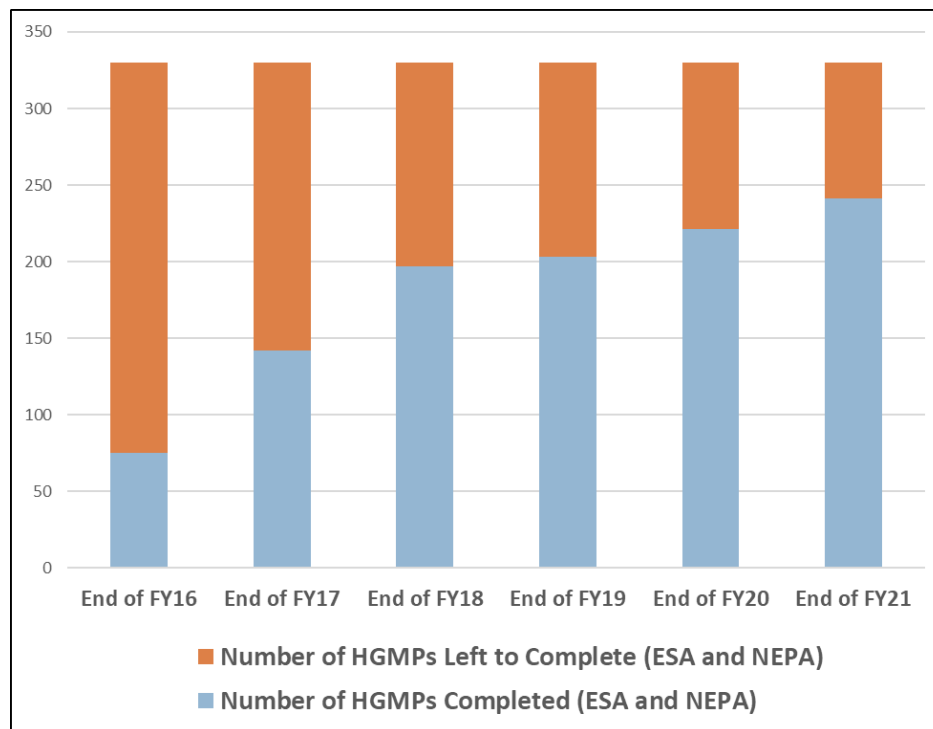


### EM Hardware



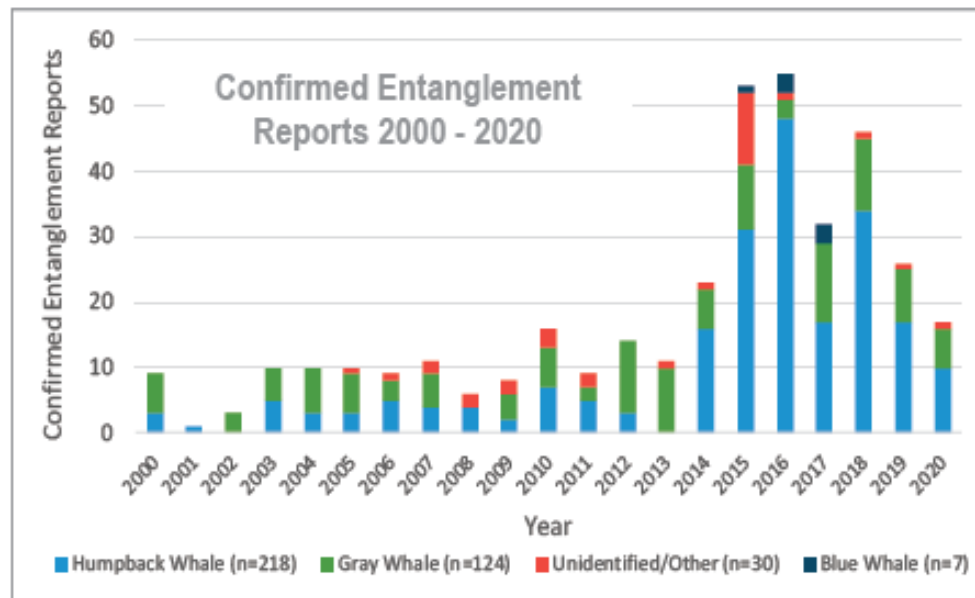
## V. Complete and Advance Priority ESA Consultations

- Continue reducing the backlog of Hatchery and Genetic Management Plans that need to be reviewed under the National Environmental Policy Act and/or the ESA.



## VI. Engage Partners to Enhance Conservation

- Assist the states of California, Oregon, and Washington to advance their efforts to draft applications for ESA Section 10 permits for their Dungeness crab fisheries' entanglements of ESA-listed whales and sea turtles.



Number of confirmed entanglements (all fisheries) by species reported to the West Coast Region each year from 2000 to 2020.



# VII. Protect and Conserve Anadromous Fish Habitat

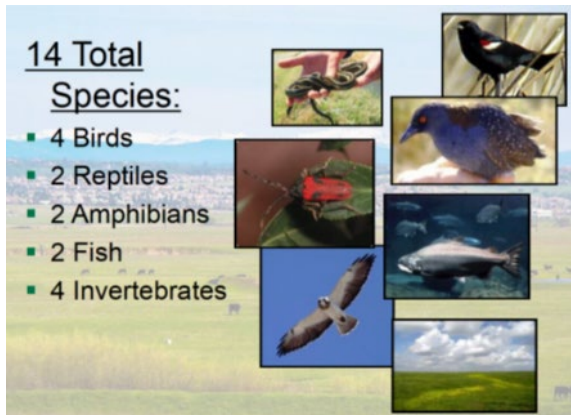
- Advance Development of New Habitat Conservation Plans.

## Western Oregon State Forests Habitat Conservation Plan

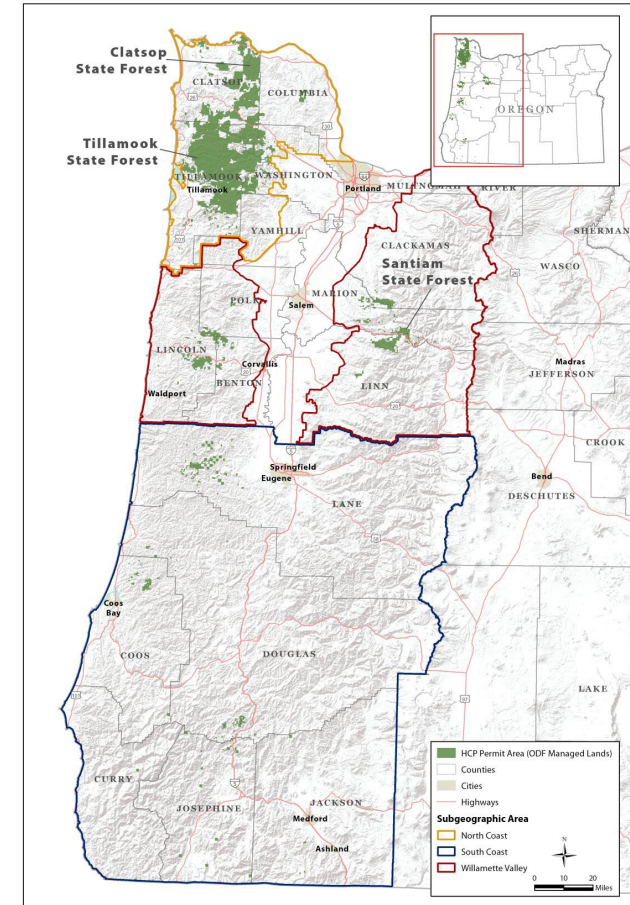
### Deschutes River Basin Habitat Conservation Plan



Photo Credit: USFWS



### Placer County Conservation Plan



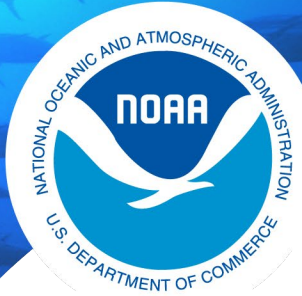
## VII. Protect and Conserve Anadromous Fish Habitat

- In collaboration with the Pacific Salmon Commission and Northwest states and tribes, implement the funding initiative to protect and restore nearshore habitat for threatened Puget Sound Chinook salmon and increase the hatchery production of prey for endangered Southern Resident killer whales.



Caption: Nearshore waters in the tidal estuary where the Nisqually River enters Puget Sound. Photo Credit: NOAA Fisheries





**NOAA**  
**FISHERIES**

West Coast  
Region

# Thank You

