



**NOAA**  
**FISHERIES**

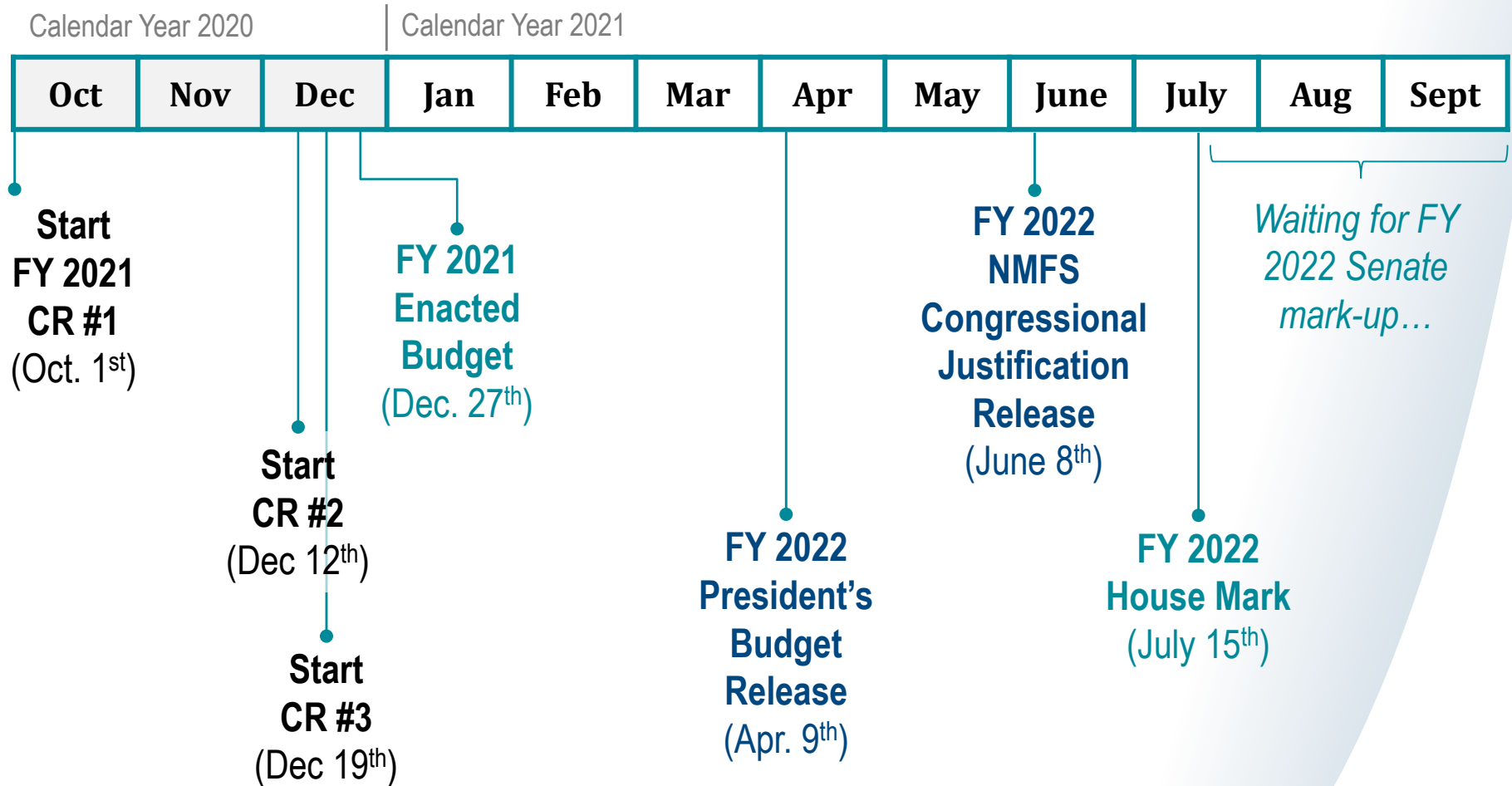
# NOAA Fisheries Update

Pacific States Marine Fisheries Commission  
Annual Meeting

Paul Doremus  
Deputy Assistant Administrator - Operations

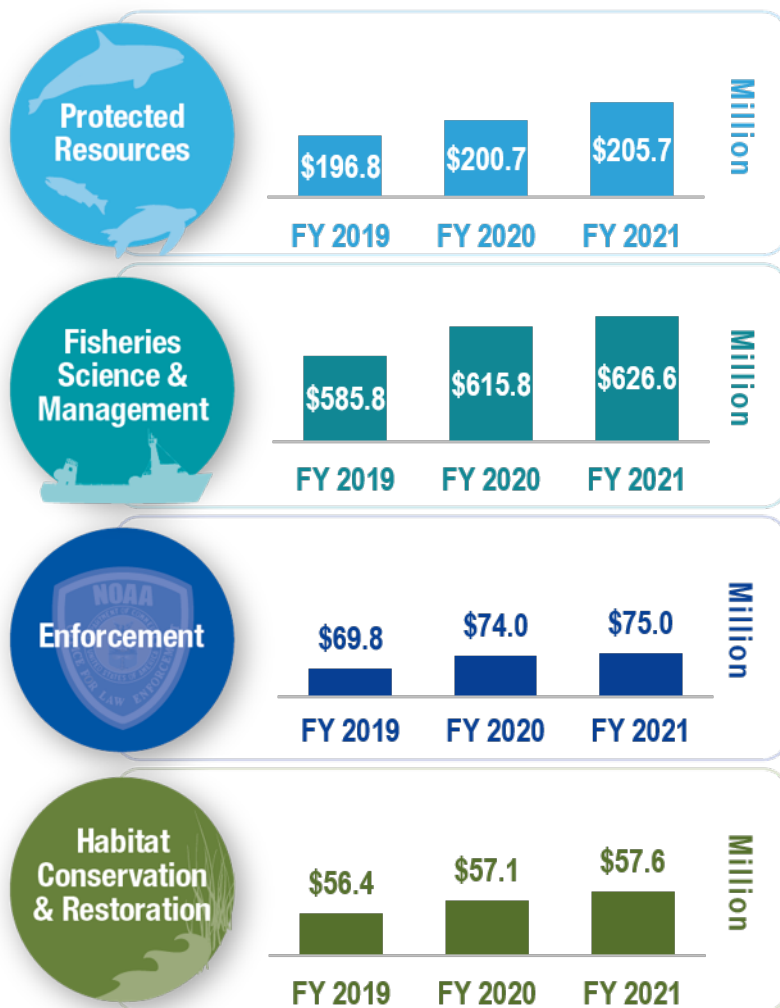
August 24, 2021

# FY 2021 / FY 2022 Budget Schedule

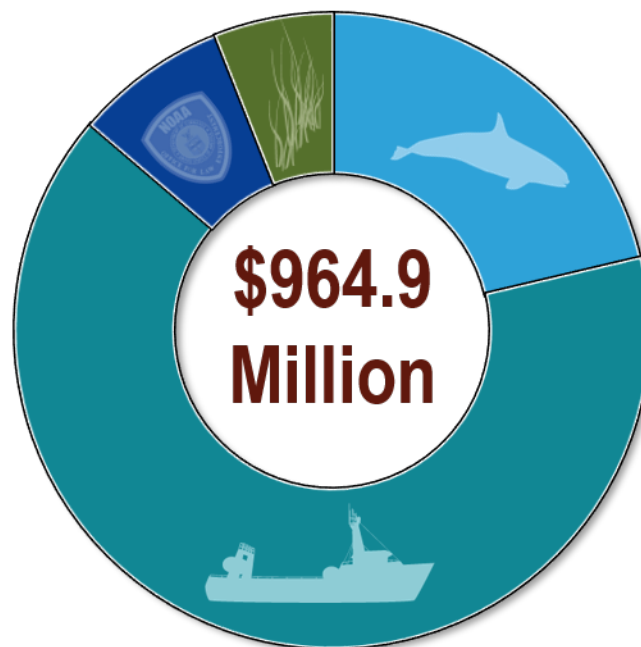


**NOAA**  
FISHERIES

# NMFS Budget (ORF)



**FY 2021  
Enacted**

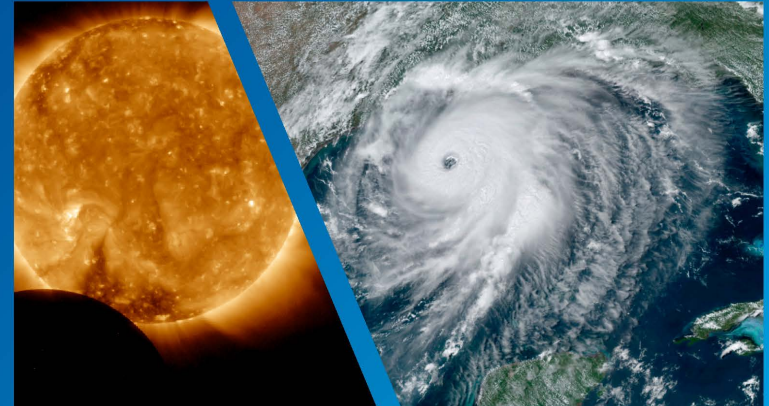


# NOAA's FY 2022 Blue Book and full Congressional Justification are available at:

[https://www.noaa.gov/  
organization/budget-finance-  
performance/budget-and-reports](https://www.noaa.gov/organization/budget-finance-performance/budget-and-reports)



**NOAA BLUE BOOK** FY2022



**NOAA  
FISHERIES**

# Administration Priorities

## Economy (Build Back Better)

- Economic Challenge of COVID-19

- Seafood Resilience and Competitiveness

## Science

- Ecosystem Science to Support Fishery Management

- 'Omics / Artificial Intelligence / Machine Learning / Uncrewed Systems

## Climate Change

- Effects on Fisheries Becoming more Readily Apparent

- Land and Water Conservation

## Renewable Energy in Offshore Waters

- Climate Mitigation / Wind Energy Siting

## Social Justice

- Environmental Justice

- Equitable Distribution of Environmental Costs and Benefits



**NOAA**  
**FISHERIES**

# FY 2022 President's Budget & House Mark

FY 2022	Pres Bud Request	House Mark
Discretionary Accounts (ORF)	\$1.1B	\$1.04B
Total Increase from FY21 Enacted (ORF)	+\$134.5M	+\$79.7M
Programmatic Increases Requested (Pres Bud) / Funded (House Mark)	+\$104.1M	+\$67.8M

# FY 2022 Pres. Bud. & House Mark Highlights

Investment Areas (\$ in millions)	PB Requested +/-	House Mark +/-
<b>Restoration and resilience</b>	<b>\$50.0</b>	<b>\$2.3</b>
Species Recovery Grants	\$10.0	\$0.5
Large Scale Habitat Restoration to Build Climate Resilience	\$40.0	\$1.8
<b>Climate research</b>	<b>\$30.0</b>	<b>\$29.8</b>
Climate-Informed Fisheries Assessments and Management Strategies for Changing Oceans	\$10.0	\$10.0
Advancing Fisheries Survey Capacity for Commercially and Recreationally Valuable Species:	\$10.0	\$9.8
Climate Vulnerable Species under ESA and MMPA	\$10.0	\$10.0
<b>Offshore wind</b>	<b>\$20.4</b>	<b>\$20.4</b>
<b>Environmental justice and equity</b>	<b>\$7.0</b>	<b>\$0</b>
Advancing and Improving Territorial Fisheries Science and Management	\$3.0	\$0
Community Social Vulnerability Indicators (CSVI) Toolbox	\$1.0	\$0
Education and Outreach for Diverse Participation in Regulatory and Science Process	\$2.0	\$0
Workforce Training to Support the Seafood Industry	\$1.0	\$0
<b>Enterprise Infrastructure Solutions</b>	<b>\$0.2</b>	<b>\$0</b>
<b>Northeast Multispecies Fishery At Sea Monitors</b>	<b>(\$3.4)</b>	<b><i>rejected</i></b>

# Additional FY22 House Mark Highlights

Activity funded	Increase above FY21 enacted
Foreign Fisheries to implement the Fish and Fish Product Import Provisions of MMPA	+\$1.0M
Prescott Grants	+\$1.0M
North Atlantic Right Whale research and monitoring	+\$3.5M
Southern Resident Killer Whale research and monitoring	+\$0.4M
Species Recovery Grants	+\$0.5M
Rebuilding Pacific bluefin tuna	+\$2.0M
Pacific Salmon	+\$3.5M
Pacific Salmon Treaty	+\$2.0M
Mitchell Act Hatcheries	+\$2.0M
Regional Councils & Fisheries Commissions	+\$1.5M
Address IUU fishing, among other enforcement priorities	+\$3.5M
Habitat Conservation and Restoration	+\$4.0M



# NOAA Fisheries Budget Snapshot (total budget, \$ in millions)

	FY 2020 Enacted \$1,055.0	FY 2021 Enacted \$1,072.2	FY 2022	
			Pres Bud \$1,197.5	House Mark \$1,142.7
Fisheries Disaster Mitigation Fund	\$-	\$-	\$-	\$-
Other Accounts	\$42.4	\$42.3	\$33.1	\$33.1
Pacific Coastal Salmon Recovery Fund	\$65.0	\$65.0	\$65.0	\$65.0
Habitat Conservation and Restoration	\$57.1	\$57.6	\$99.7	\$61.5
Enforcement	\$74.0	\$75.0	\$77.7	\$78.5
	\$615.8	\$626.6	\$684.8	\$673.6
Fisheries Science and Management				
	\$200.7	\$205.7	\$237.1	\$231.0
Protected Resources Science and Mgmt				



# Funding to States

# Assistance for fisheries participants affected by COVID-19

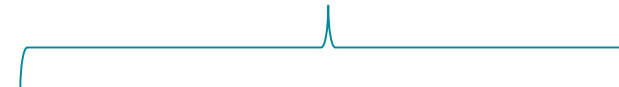
The Coronavirus Aid,  
Relief, and Economic  
Security (CARES) Act,  
2020

Coronavirus Response  
and Relief Supplemental  
Appropriations Act,  
2021

**\$300M**



**\$300M**



<b>\$255M</b>	+	<b>\$30M</b>	+	<b>\$15M</b>
States & territories with coastal and marine fishery participants		Tribal fishery participants in coastal & Great Lakes states		Great Lakes states

# Regional Councils and Fisheries Commissions Funding – Detail

PPA/Detail funding (\$ in thousands)*	FY 2020 Enacted	FY 2021		FY 2022		Change FY22 Mark vs FY21 Enacted
		Enacted	Spend Plan	Pres Bud	House Mark	
Regional Councils and Fisheries Commissions	\$40,247	\$41,500	\$40, 954	\$42,902	\$43,000	+\$1,500
<i>Regional Councils</i>	\$27,921	\$28,860	\$28,480	\$29,831	TBD, +\$98 from Request	TBD
<i>International Fisheries Commissions</i>	\$542	\$542	\$535	\$565		
<i>Interstate Fish Commissions – 3 Commissions</i>	\$3,483	\$3,600	\$3,553	\$3,721		
<i>Interstate Fish Commissions – Atlantic Cooperative Management</i>	\$8,301	\$8,498	\$8,386	\$8,785		

\*Funding represents enacted levels, not final grants amount to councils and commissions.

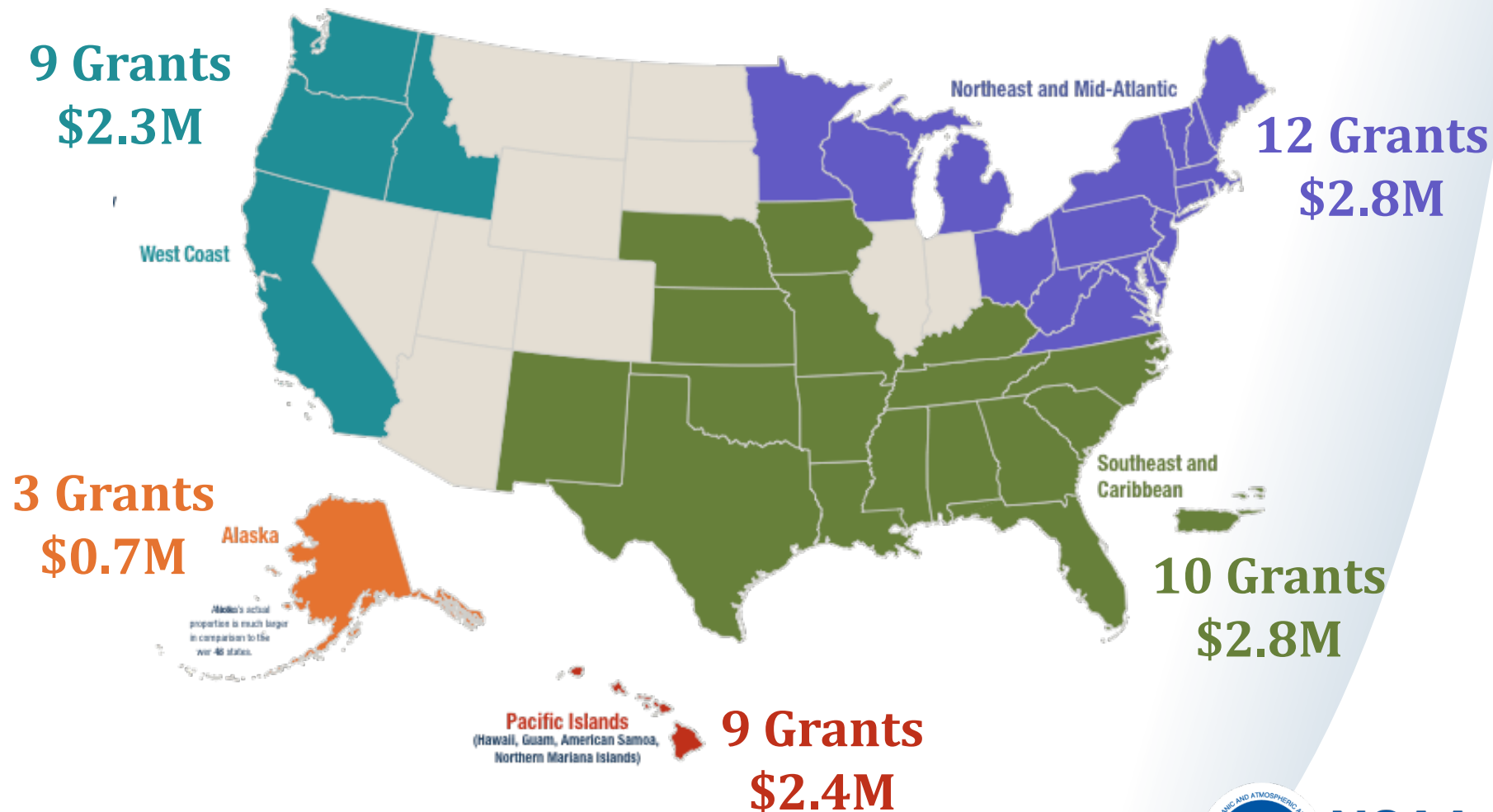


**NOAA**  
FISHERIES

# Major Grant Funding Budget Lines to States

Budget Line Name (\$ in thousands)	FY 2019	FY 2020	FY 2021	FY 2022 Request	FY 2022 House Mark
Interjurisdictional Fisheries Act	\$3,365	\$3,365	\$3,365	\$3,372	\$3,372
Southeast Area Monitoring & Assessment	\$5,125	\$5,125	\$5,125	\$5,138	\$5,125
Atlantic Coastal Fisheries Cooperative Management Act	\$8,301	\$8,301	\$8,498	\$8,785	\$8,785
Joint Enforcement Agreements	\$18,279	\$18,500	\$18,500	\$18,578	\$18,500
Pacific Salmon Treaty	\$15,500	\$35,500	\$39,500	\$39,742	\$41,500
Species Recovery Grants	\$7,000	\$7,000	\$7,000	\$17,012	\$7,500
Pacific Coastal Salmon Recovery Fund	\$65,000	\$65,000	\$65,000	\$65,000	\$65,000
FINs – Atlantic States Marine Fisheries Commission	\$2,002	\$1,992	\$1,972	~\$1,972	~\$1,972
FINs – Alaska Fisheries Information Network*	\$3,156	\$3,140	\$3,109	~\$3,109	~\$3,109
FINs – Pacific Coastal Fisheries Information Network	\$2,968	\$2,952	\$2,923	~\$2,923	~\$2,923
FINs – Recreational Fishery Info Network	\$3,722	\$3,703	\$3,666	~\$3,666	~\$3,666
FINs – Marine Fisheries Initiative (MARFIN)	\$3,300	\$3,283	\$3,429	~\$3,429	~\$3,429
FINs – Gulf Fisheries Information Network	\$4,294	\$4,272	\$4,229	~\$4,229	~\$4,229
<b>Total of Major Grant Funding:</b>	<b>\$142,012</b>	<b>\$162,133</b>	<b>\$166,316</b>	<b>\$176,955</b>	<b>\$169,110</b>

# FY 2021 Saltonstall-Kennedy Grants – Competitive Awards (\$11.1M)



**NOAA**  
**FISHERIES**

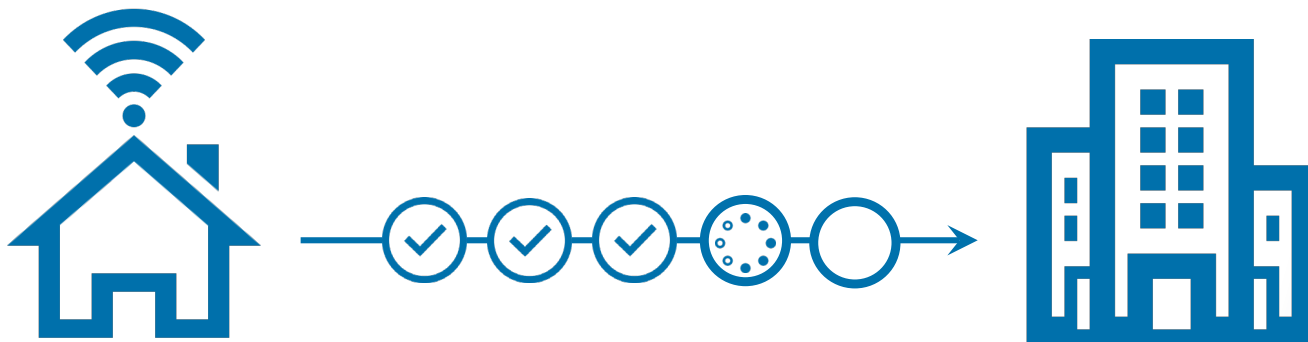




# COVID & the path forward

# Return to the office: Smart, steady, flexible

- Phased approach
- Driven by local data
- Using consistent protocols
- Timing will vary around the country







# Phased Return to Onsite Work

National Oceanic and Atmospheric Administration

U.S. Department of Commerce



COVID-19

S M A R T - S T E A D Y - F L E X I B L E



## Minimum 14 Day Phase Progression

Details on criteria for and execution of future phases may be updated as new information becomes available.

CRITERIA

Downward trajectory of COVID symptoms & positive tests. • Adequate PPE to execute NOAA missions safely.  
Local hospitals have capacity to treat all patients without crisis care. • No evidence of a rebound in cases.

## PHASE 0

## PHASE 1

## PHASE 2

## PHASE 3

MISSION ESSENTIAL ACTIVITIES

MISSION CRITICAL ACTIVITIES

SUPPORT ACTIVITIES

ALL ACTIVITIES

FACE COVERING REQUIRED

REEVALUATE NEED

PHYSICAL DISTANCING

FREQUENT HANDWASHING

POSITIVE CASE FOLLOW-UP

REEVALUATE NEED

RESTRICTED STAFF ACCESS

UP TO 25% OCCUPANCY

UP TO 50% OCCUPANCY

NORMAL OCCUPANCY

NO PUBLIC ACCESS

LIMITED PUBLIC ACCESS

NORMAL PUBLIC ACCESS

COMMON AREAS CLOSED

LIMITED COMMON AREA ACCESS

COMMON AREAS OPEN

MANDATORY

MAXIMUM

ENCOURAGED  
MAXIMUM EXTENT POSSIBLE

ENCOURAGED

SUSPENDED

EMERGENCIES REQUIRED  
DUS and UNSEC APPROVAL

MISSION ESSENTIAL  
MISSION CRITICAL  
LO/50 APPROVAL REQUIRED

MISSION ESSENTIAL  
MISSION CRITICAL

REDUCED TRAVEL

VIRTUAL & REMOTE  
ONLY

VIRTUAL & REMOTE  
ONLY

VIRTUAL & REMOTE  
ONLY

VIRTUAL & REMOTE  
WHEN POSSIBLE  
REDUCE LARGE GATHERINGS

MISSION

HEALTH

FACILITIES

TELEWORK

TRAVEL

EVENTS

RETURN TO NORMAL OPERATIONS

This overall guidance for a phased return to onsite work can vary by location and may evolve based on data from local/state governments and public health officials.

# Mission essential travel: NOAA Research Fleet

- Greater flexibility in approval for travel associated with NOAA Research fleet
- Doesn't include small boats or charters
- Travelers must adhere to all NMFS and OMAO medical protocols





# Getting back on track

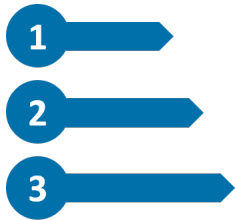


**NOAA**  
FISHERIES

# Future Outlook



Executing FY 2022



Planning FY2023 within the new administration's priorities



Operating in a safer workplace environment



# Questions?

