

Alaska's Report to the Pacific States Marine Fisheries Commission



Cora Campbell, Commissioner
Alaska Department of Fish and Game



Introduction

- Agency overview
- Budget climate
- Chinook Salmon Research Initiative
- Climate and Adaptation



Alaska Department of Fish and Game

Organizational Chart



Alaska Department of Fish and Game

Department Overview



1,700 Employees

32 Special Areas

750+ Active Fisheries

47 Offices Statewide

26 Game Management Units



Fish Divisions Overview



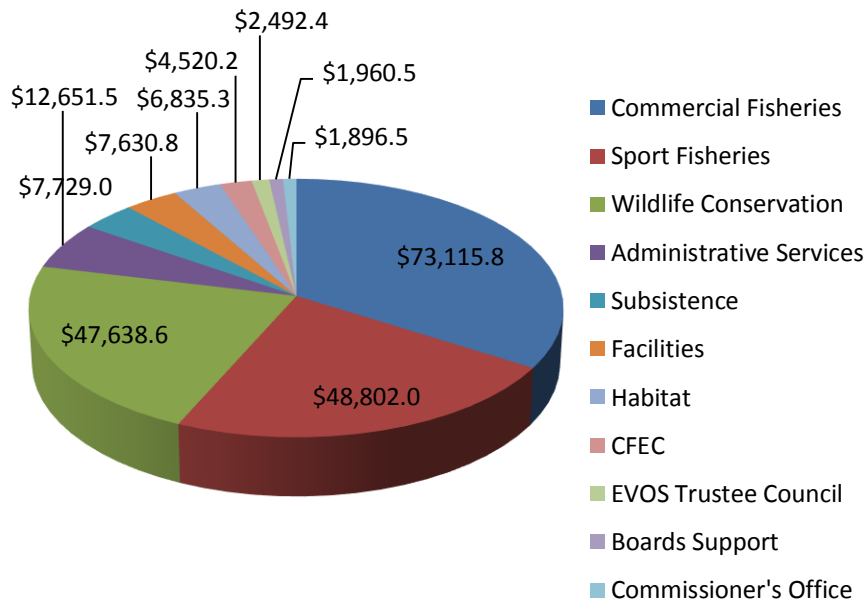
- Commercial Fisheries
 - 34% of budget: \$73,115.8
 - 309 permanent full-time
 - 432 permanent part-time/seasonal
- Sport Fish
 - 23% of budget: \$48,802.0
 - 205 permanent full-time
 - 179 permanent part-time/seasonal



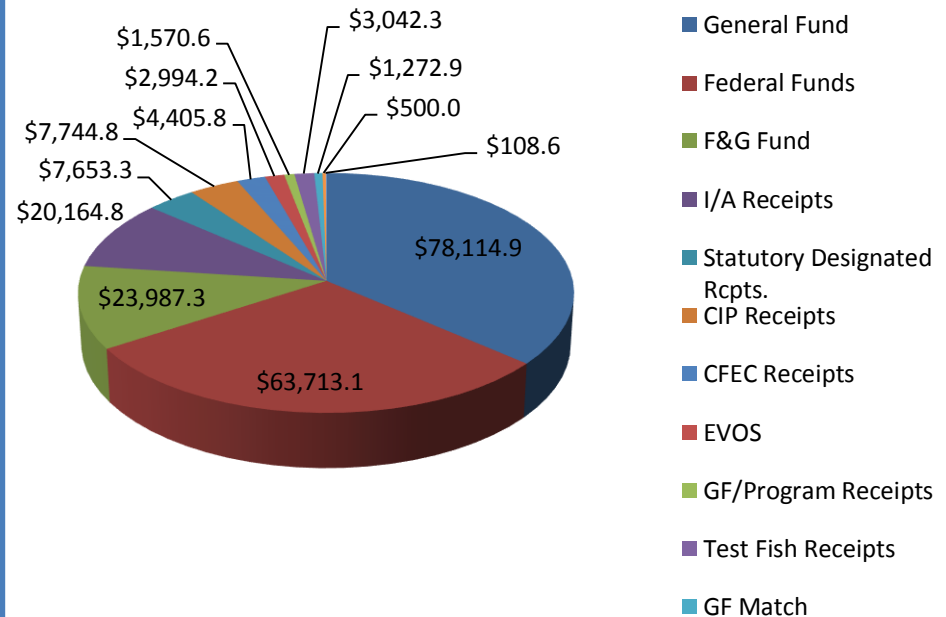
FY2015 Budget By Division & Fund Source (\$215,272.6)



FY2015 Budget By Division



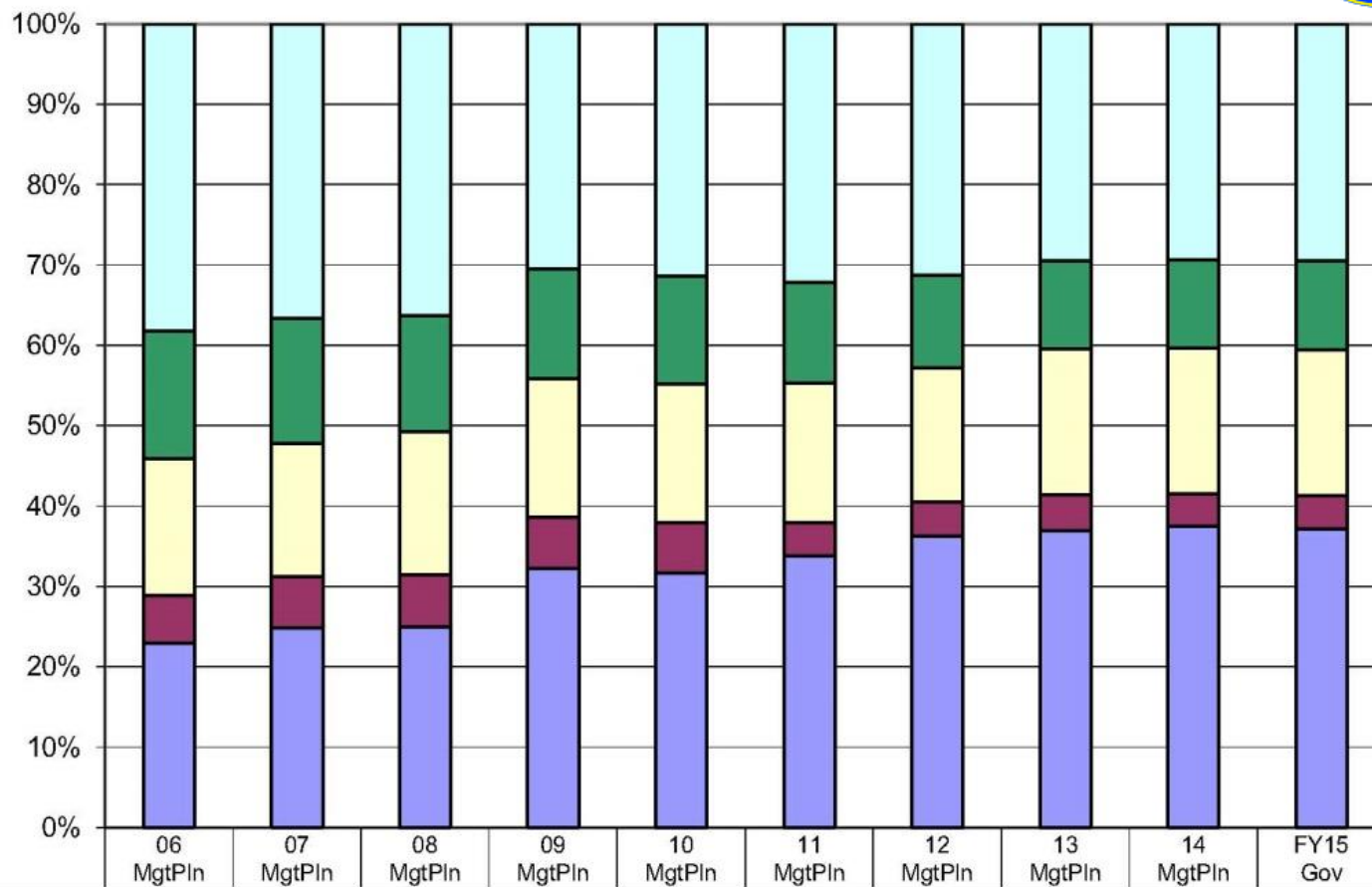
FY2015 Budget By Fund Source





Department of Fish & Game **Percent of the Total Department's Budget by Fund Group** **(All Funds)** **(\$ Thousands)**

The percentage of general funds (UGF & DGF) in the Department of Fish & Game's budget was 29% in FY06 and is 41% in the FY15 Governor's Request.



■ Federal Receipts (Fed)	61,116.6	63,432.6	62,151.8	54,950.3	56,836.2	62,139.1	62,199.7	62,359.6	64,008.0	63,713.1
■ 1024 Fish/Game (Other)	25,318.7	26,834.8	24,663.4	24,469.1	24,393.8	24,306.2	23,013.1	23,379.2	24,016.2	23,987.3
■ Other State Funds (Other)	27,333.4	28,716.4	30,340.2	31,110.4	31,161.9	33,577.5	33,304.1	38,308.2	39,442.6	39,165.7
■ Designated General (DGF)	9,494.9	11,016.7	11,124.2	11,426.8	11,502.3	8,185.0	8,371.2	9,506.7	8,805.3	8,817.3
■ Unrestricted General (UGF)	36,585.5	43,075.2	42,765.7	58,087.9	57,297.5	65,338.9	72,246.7	78,259.6	81,809.3	80,387.8

Budget Issues and Challenges

- Growing reliance on general fund
- Decline in other funds
- Projecting additional reductions





ADF&G Core Services

- Management
 - Provide hunting and fishing opportunities, protect state's rights to manage its fish and wildlife resources, protect and improve habitat and access.
- Stock Assessment and Research
 - Ensure sustainability and harvestable surplus, improve assessment and research capabilities, invest in new technologies, anticipate changing conditions.
- Customer Service and Public Involvement
 - Make improvements to information and education services, the Boards and other regulatory processes, licensing and permitting.



Chinook Salmon Research Initiative

- Alaska Chinook stocks at low levels of abundance due to changing conditions
- Research Plan - \$30 million over 5 years
 - \$7.5 million appropriated in FY14
 - \$7.5 million appropriated in FY15
 - Additional funding expected in FY16



Chinook Salmon Research Initiative



- 12 Indicator Stocks



Chinook Salmon Research Initiative



2014 Projects

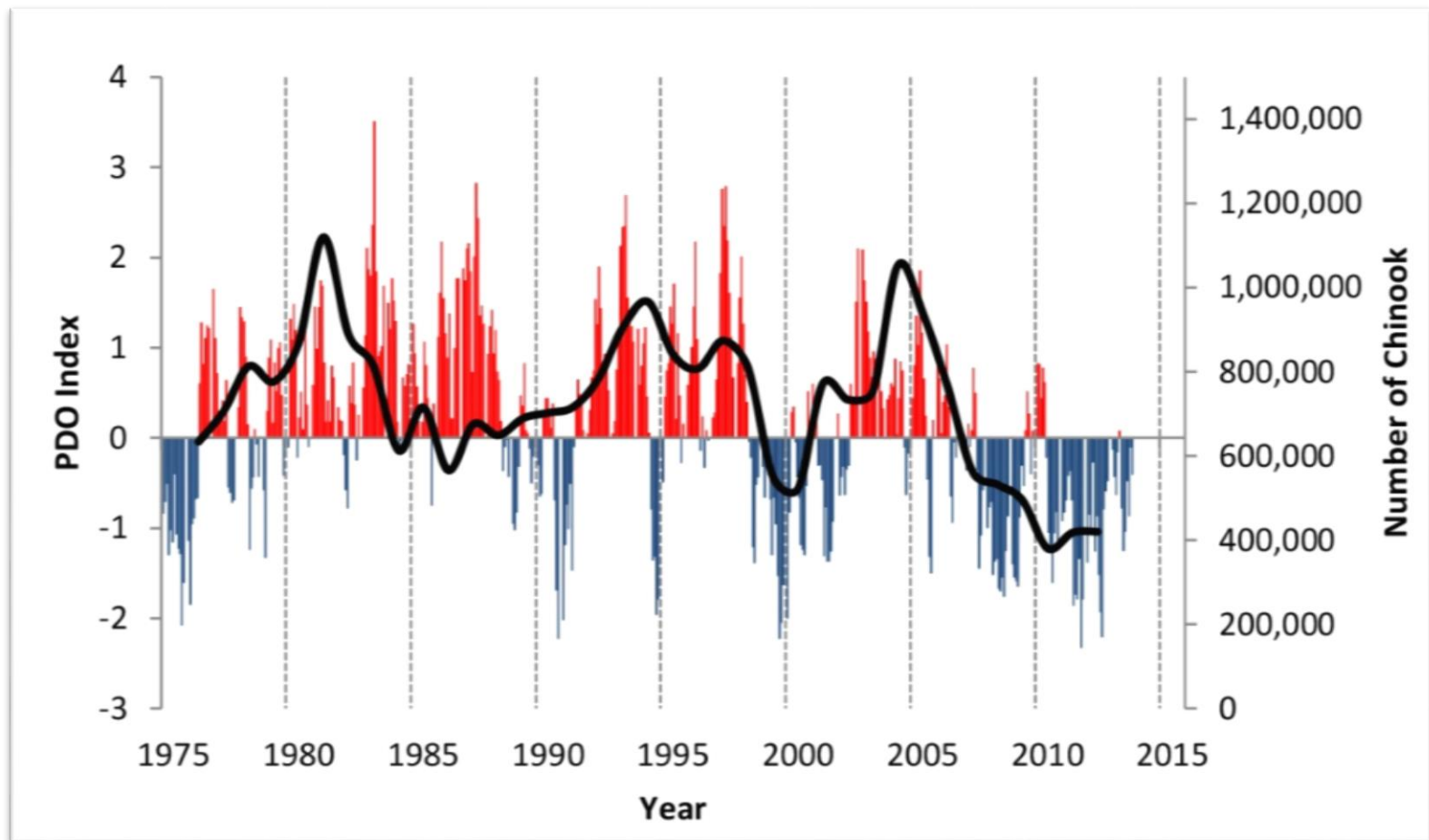
- Adult and Juvenile Abundance Estimates
- Subsistence Harvests and Local Traditional Knowledge
- Genetics and Coded Wire Tagging
- Nearshore Marine Survival



Trends in Productivity



- Decline linked to environmental factors



Management Response

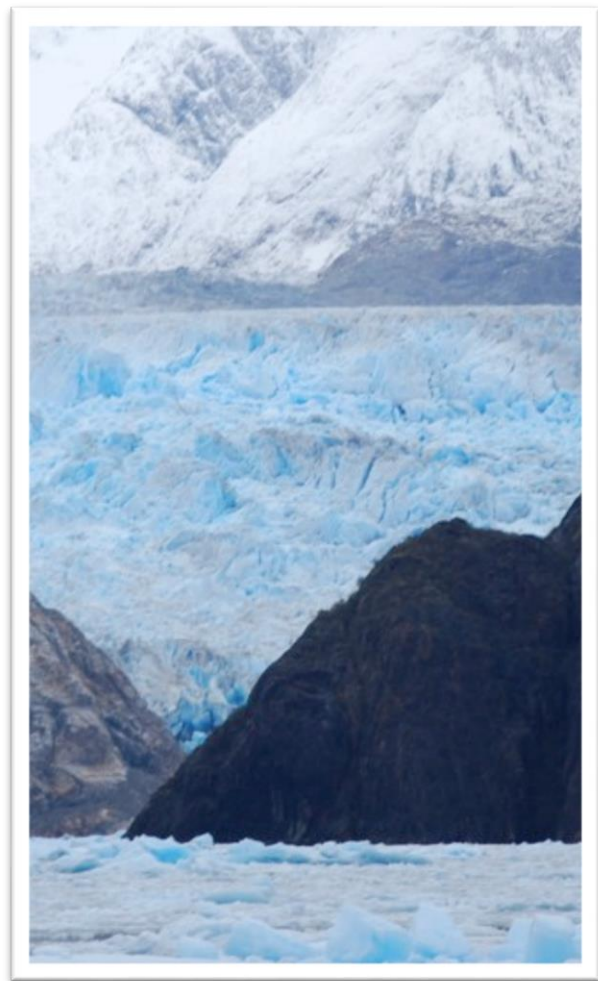


- Restrictions on Harvest
- Increase Stocking
- Opportunities to Harvest
Abundant Species
- Disaster Declaration
- Bycatch Reduction





Ecosystem Considerations



- Changing ecosystems driving fishery trends
- Affecting stock distribution and conservation, effectiveness of bycatch reduction measures, and other management decisions
- Uncertainty in predicting ecosystem trends and resulting stock status
- Need for additional research

Precautionary and Adaptive Management



Precautionary approach when changes are rapid and expose previously unfished stocks to exploitation

Adaptive approach where changes are more gradual or affect stocks that support established fisheries



Consider:

- whether conservation closures continue to protect core stock and their habitat
- whether environmental variables could trigger management actions
- indexing harvest limits for non-target species to abundance

Information/Resources Needed



- Pressing need for better information for fishery managers to be proactive in response to changes
- Maintain state and federal funding for surveys, stock assessments, and research priorities
- Retain focus on core responsibilities

