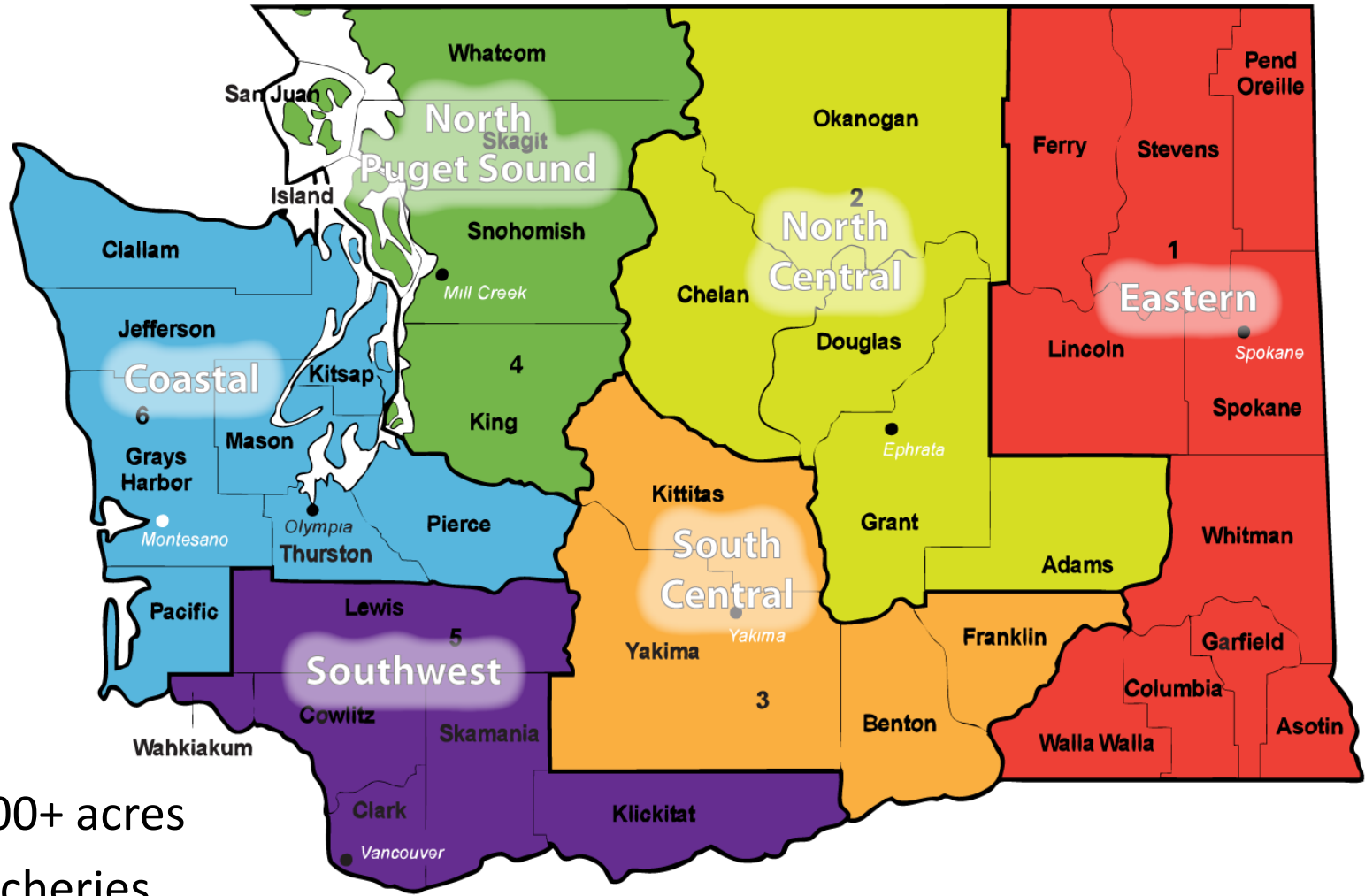


# WDFW Update: Budget and Current Economic Times



*PSMFC Annual Meeting*  
*August 28-31, 2011*

# Regional Offices



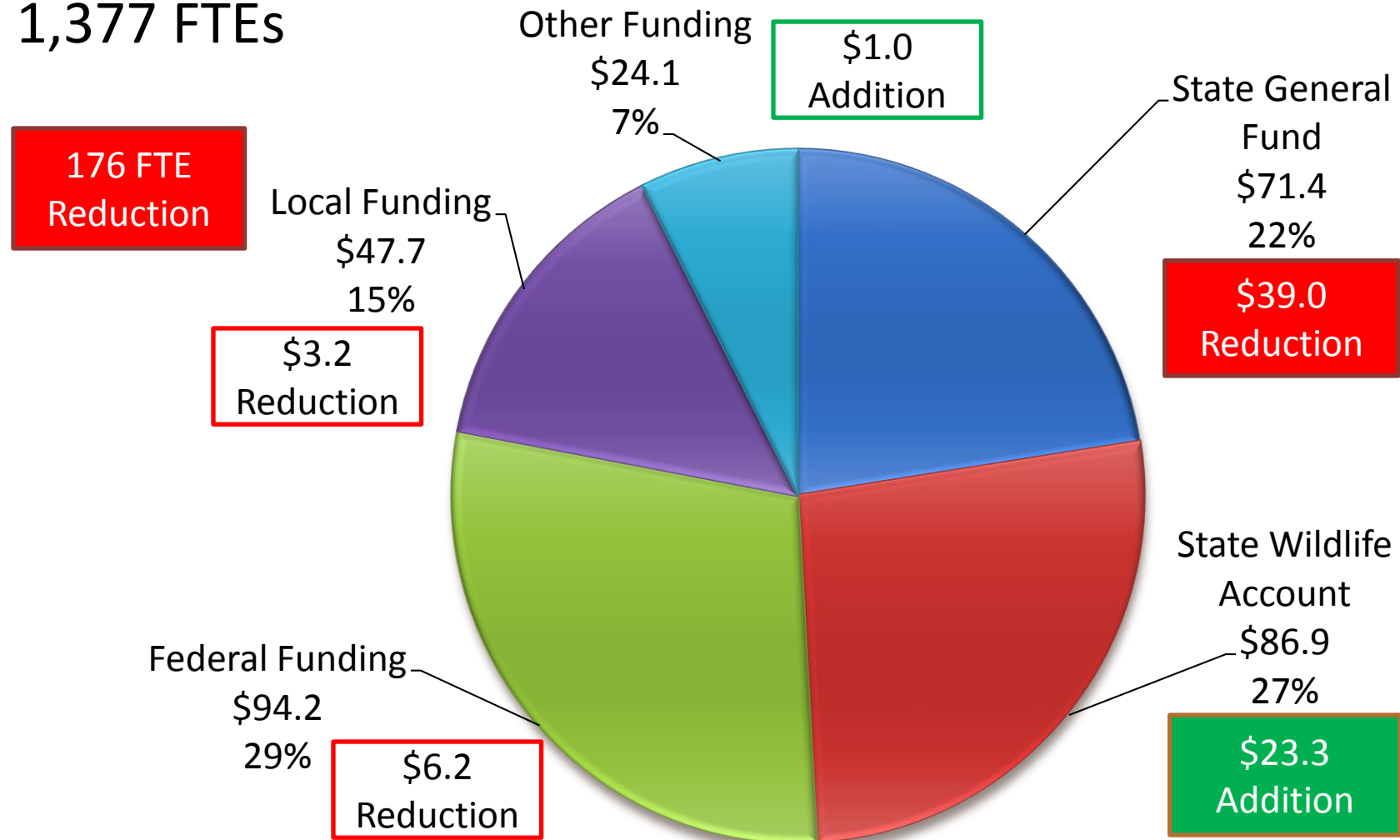
- 900,000+ acres
- 88 hatcheries
- 697 access sites

# 2009-11 Operating Budget

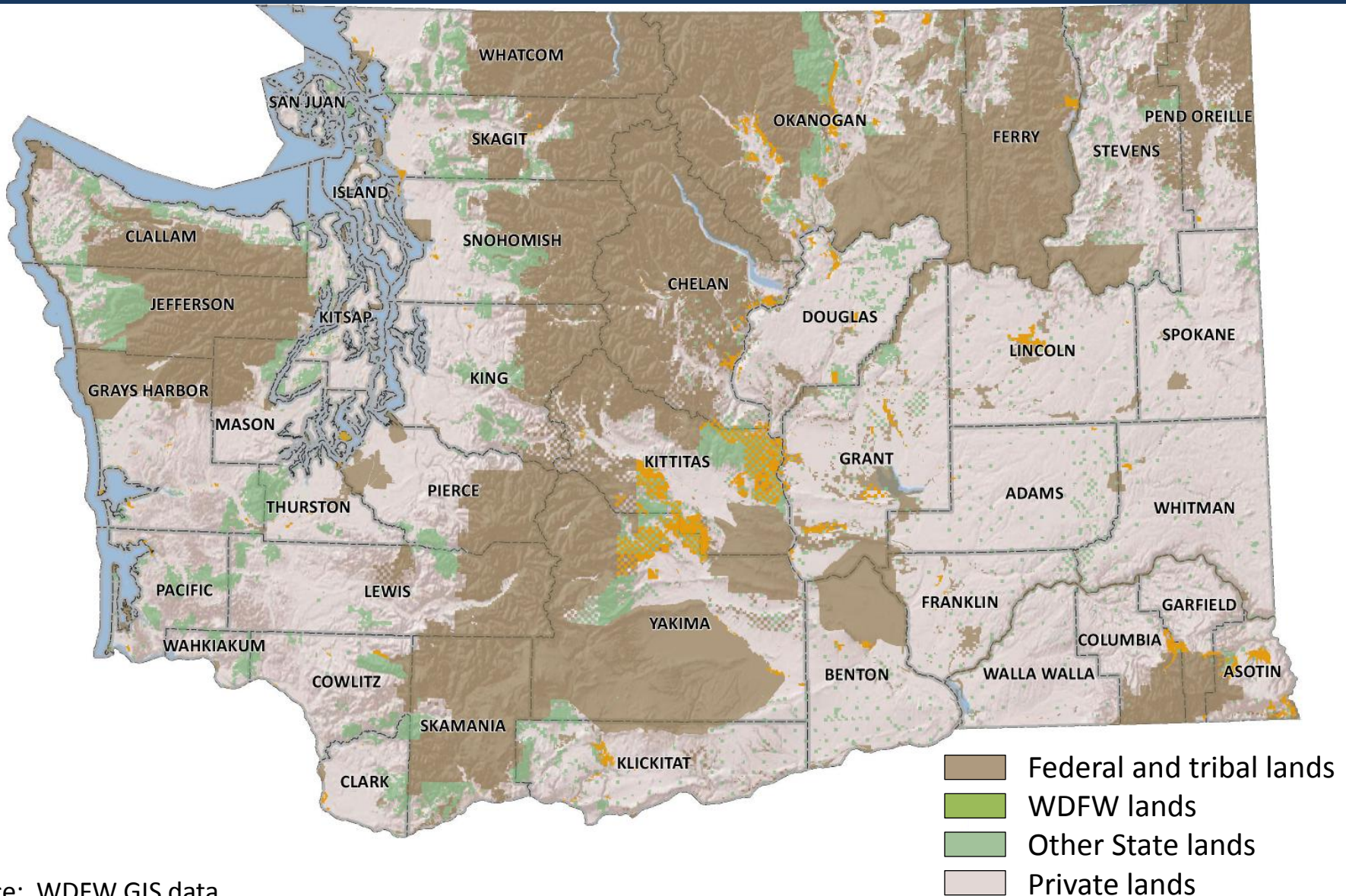
\$326.3 Million

Dollars in millions

1,377 FTEs

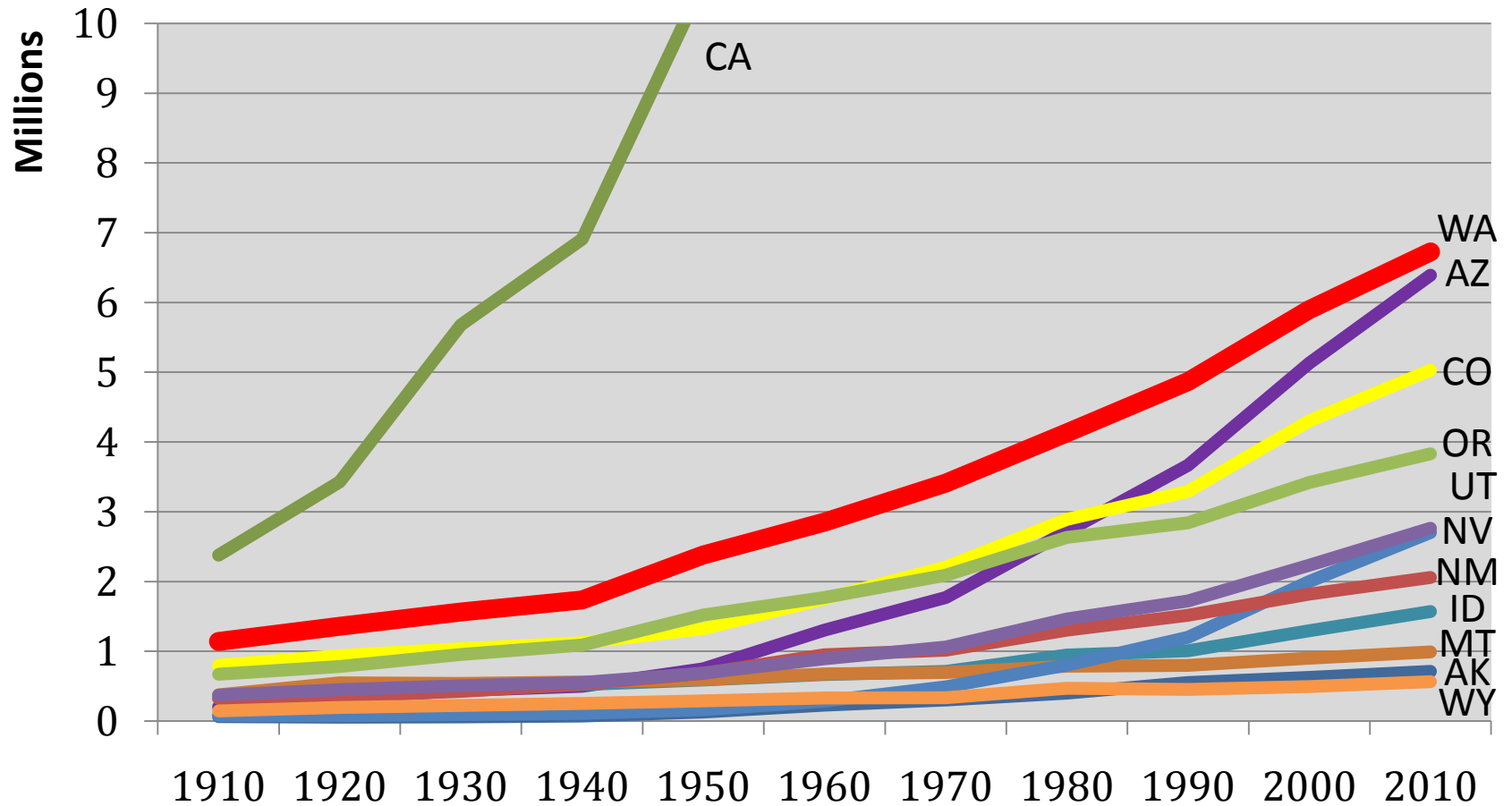


# Land Ownership



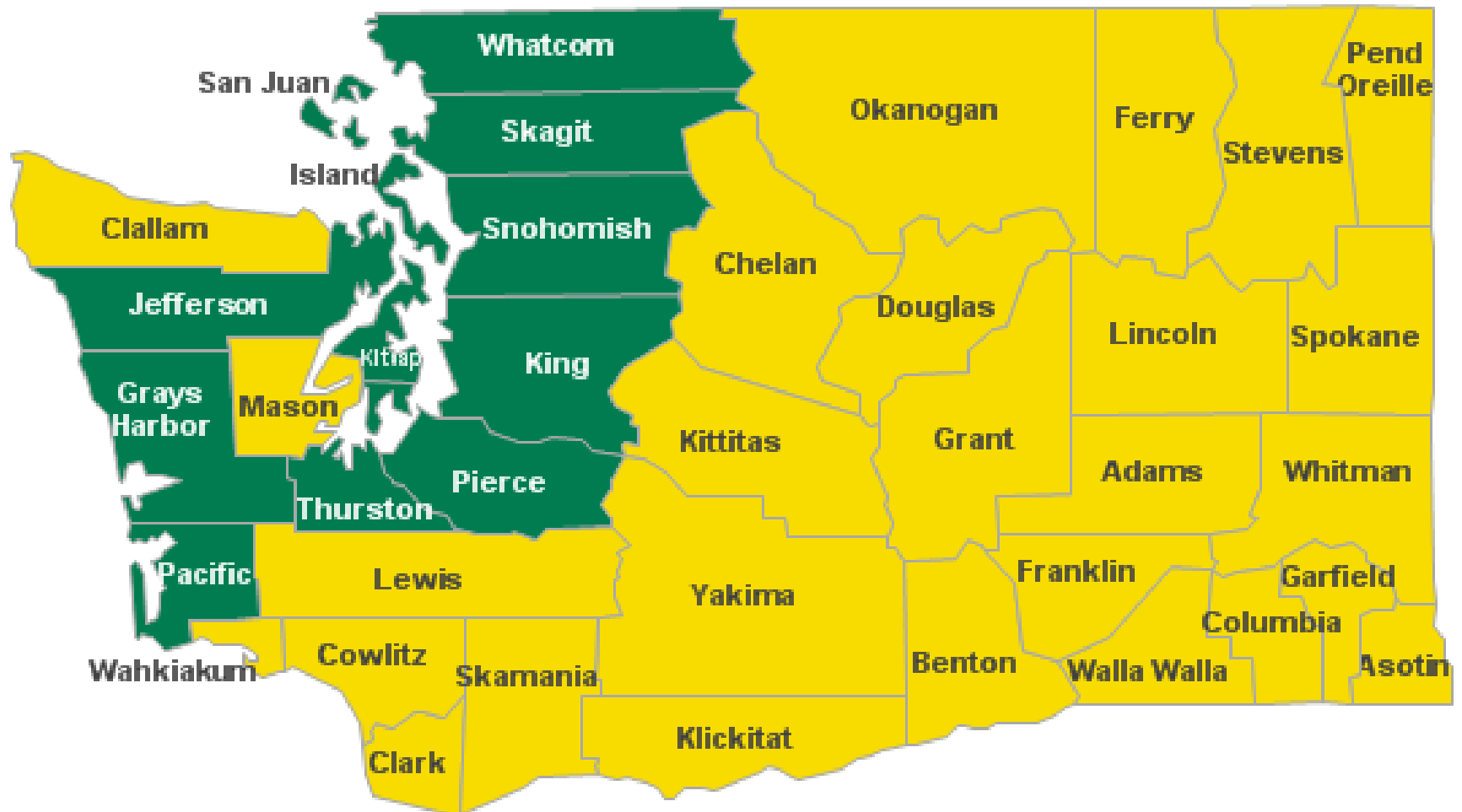
Source: WDFW GIS data

# Population Growth



**2010 Census Population Data in millions**

# Political Landscape



# 2011 Session – Accomplishments

- License Fees\* SSB 5385
- Discover Pass (DFW/DNR/Parks)\* 2SSB 5622
- Invasive Species Fee (DFW/DOE)\* SSB 5036
- Puget Sound Recreational Fishing\* HB 1698
- Spree Killing HB 1340
- Coastal Spot Shrimp SHB 1148
- Sanitary Shellfish (DOH) SHB 1453

*\* Agency Request Legislation*



# 2011-13 Biennium – Key Issues

- Implement Discover Pass
- Continue to Advance Strategic Priorities
  - Hatchery Reform/21<sup>st</sup> Century Salmon & Steelhead
  - Wolf Conservation Plan
  - Orca/Chinook and ESA issues
  - Enhance Fresh and Salt water fisheries
  - Hunter Education Reform
  - Columbia River Management Issues
  - Conservation Initiative



# Upcoming Challenges

- Further Reductions in State Funding
  - Sept 2011 Forecast Expected \$1Billion Shortfall
  - Governor Requested Agencies Identify Additional 10% Cut
- Anticipated Reductions in Federal Funding
  - PFMC, PacFIN
- New Federal Initiatives Without Funding
  - Catch Share Program
  - Coastal and Marine Spatial Planning