



# NOAA OFFICE OF LAW ENFORCEMENT SUMMIT

## West Coast Participants

Tony Warrington – CDFG

Steve Bear – Alaska State Trooper

Earl Comstock – Alaska Charter Association

Bob Alverson – FVOA

Vicki Nomura – NOAA OLE

Don Masters – NOAA OLE

Douglas Fear – USCG - Seattle

Steve Joner – Makah Tribe

Bud Walsh – Davis, Wright, Tremaine



# Problem Statement

- The Office of the Inspector concluded that a lack of management attention, direction, and oversight led to regional enforcement elements operating independently; in the Northeast Region, this has contributed to aggregate fine assessments that are inconsistent with those in the other five regions. From 2004-2009, fines in the Northeast were 2.5 times higher than the second highest region and five times or more greater than the other four regions



# NOAA National Law Enforcement Summit

## Office of Inspector General Findings

1. NOAA senior leadership need to exercise greater management and oversight
2. NOAA needs to strengthen policy guidance, procedures and internal controls
3. NOAA needs to reassess its workforce composition



# NOAA LAW ENFORCEMENT SUMMIT

- Establish a process for annual priority setting at the national and regional level (criminal vs. civil)
- Increase compliance, emphasize partnerships, and utilize stakeholder input
- September-January consult with stakeholders
- January NOAA develops draft priorities
- February – August, internal and external review and approval process



# Protecting the Nation's Marine Resources



## West Coast Approach



# A Proven History of Success!

- 27-Year Working Relationship With NOAA
- 600 Community-Based Uniformed Officers
- Highly trained and equipped





# West Coast

# Federal Fisheries Enforcement Model

Pacific Fishery Management Council

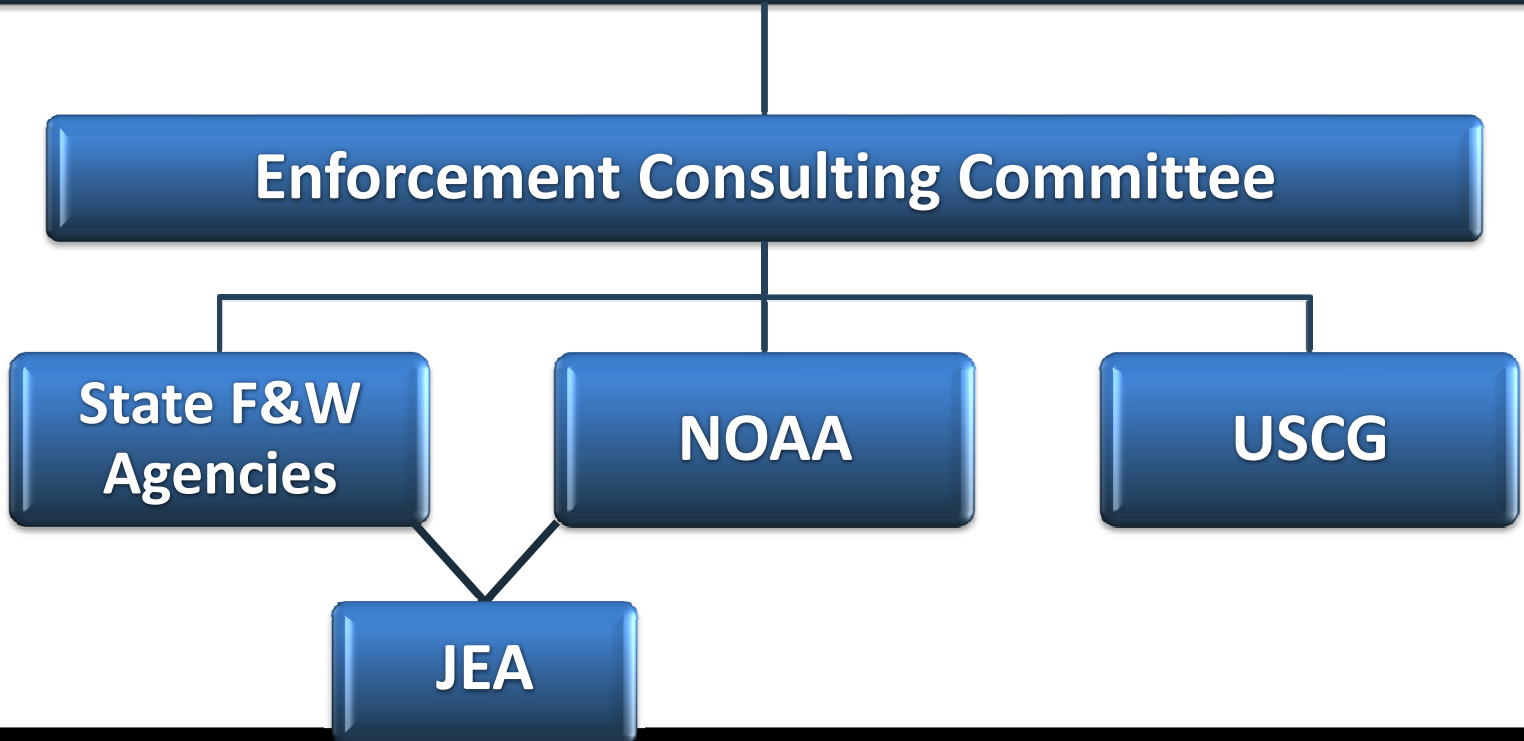
Enforcement Consulting Committee

State F&W  
Agencies

NOAA

USCG

JEA





**ESA Salmon  
Protection**



**Shore-side Whiting &  
By-catch Counting**



**Coastal Halibut  
Patrols**



# PROCESS STEPS

- Sept.-Dec. - Consult with stakeholders regarding national and regional priorities
- January – NOAA leadership draft national and regional priorities
- March-April – OLE and GCEL seek public comment
- July – final draft priorities to A.A and GC
- August – A.A. and GC approve national and regional priorities