

Overview of the

Southeast Alaska Longline Surveys



For the Alaska Department of Fish and Game

*Kamala Carroll
Kristen Green*



Fishery by Management Areas

Chatham Strait Fishery

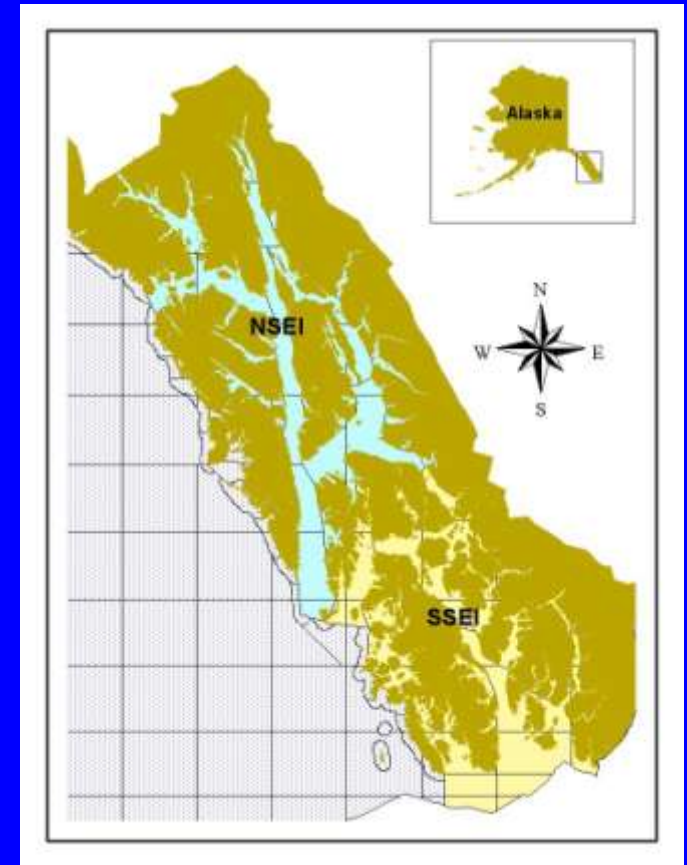
Northern Southeast Inside
(NSEI)

Aug 15th-Nov 15th Annually

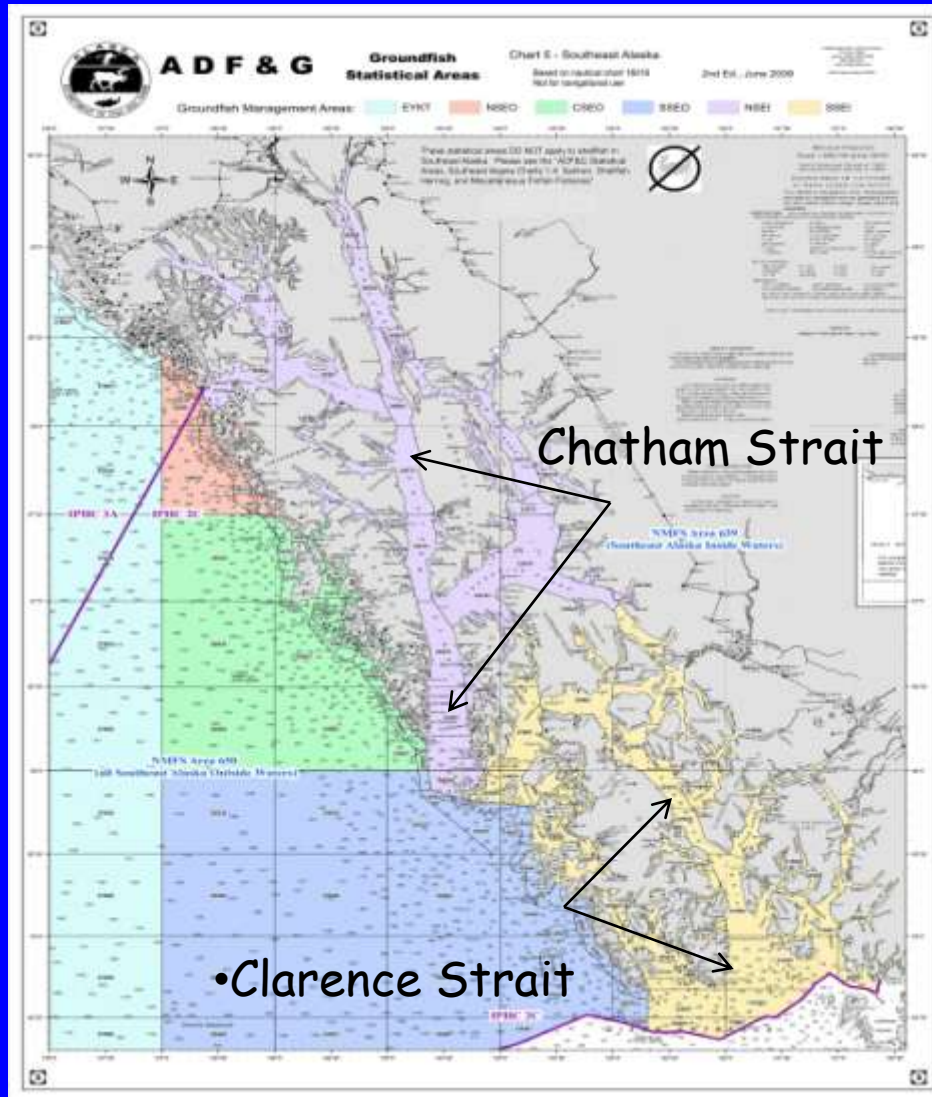
Clarence Strait Fishery

Southern Southeast Inside
(SSEI)

June 1st-Aug 15th Annually



Southeast Alaska



Non-standardized Longline Gear

- Snap-on, Conventional
- 500-2150 hooks/skate
- 1-3m hook spacing
- 1-3.2kg skate weights
- Herring or Squid bait
- Soak time 1-11 hours





Standardized Longline Gear

- 2 m spacing
- 15" gangions w/beckets
- Squid bait
- Soaked 3-11 hours

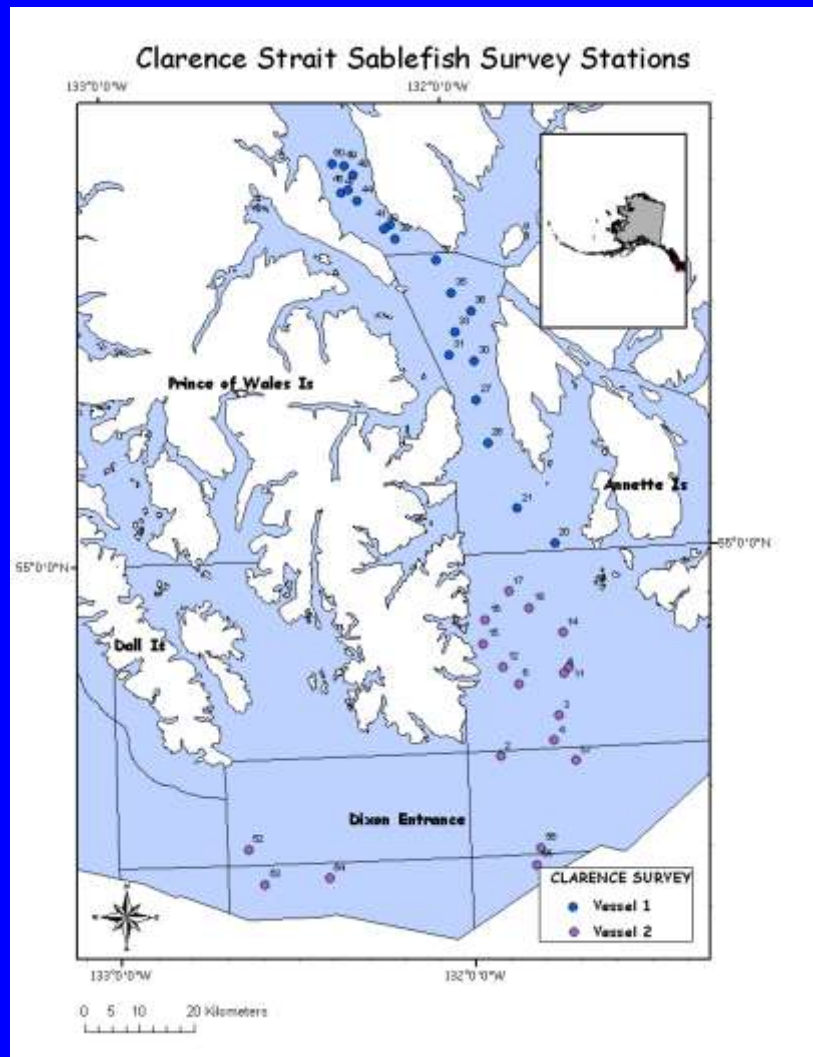
Standardized in 2000 to replicate NOAA Fisheries surveys

Vessels

- 2 or 3 vessels
- 14 day charter
- Vessel supplies:
fuel, gear operation,
accommodations for
ADF&G staff
- Department supplies:
gear and bait



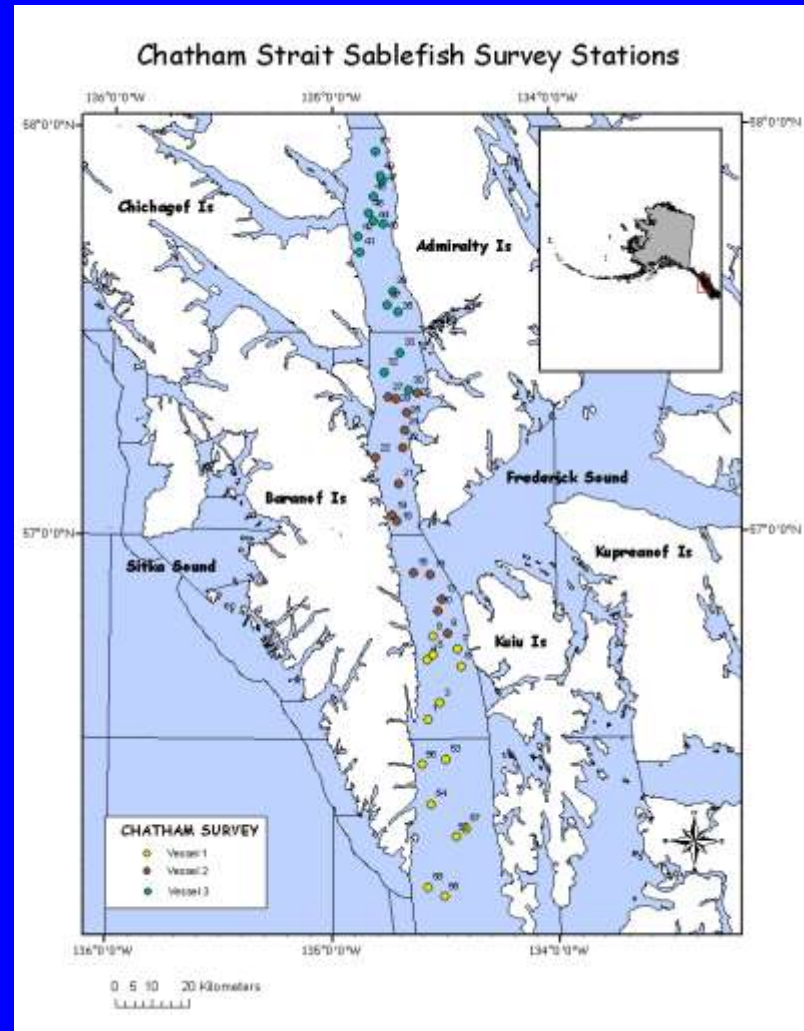
Clarence Longline Survey



- Early - Mid May
- 2 vessels, 2 sections
- 18 or 19 stations
- 6 days fishing
- Mid-trip Port delivery

Chatham Longline Survey

- Late July-early August
- 3 vessels, 3 sections
- 14 or 15 stations
- 5 days of fishing
- Mid-trip tender delivery



Fish tally/Hook accounting

9



Record

- Location
- Set and haul times
- Depth
- Species retained/discarded
- Hook condition

Sablefish Sampling



- Weight
- Length
- Sex
- Gonad maturity
- Otoliths



Rockfish Sampling



Rockfish

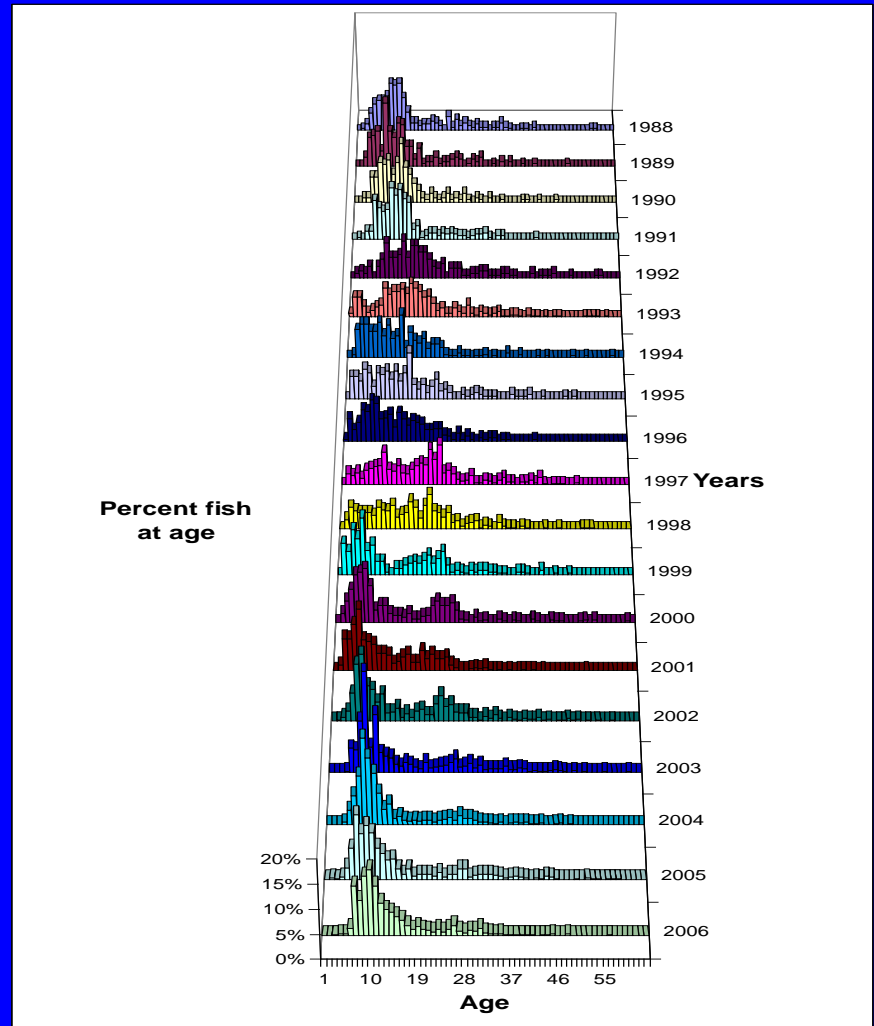
- Weight
- Length
- Sex

Thornyhead

- Length

Longline Survey Data Results

- Catch per unit effort
- Length, Weight, Sex
- Ages
- Bycatch



Fishery Port Sampling



- Chatham Fishery mark recapture study countback

- Weight
- Length
- Sex
- Gonad maturity
- Otoliths



Survey data is used in conjunction with:

- Port sampling
- Fishery CPUE
- Age compositions
- Mark recapture study (Chatham only)
- GOA and BC sablefish stock status

To set Clarence/Chatham fishery quotas



Thank You

