



California Steelhead: Management and Stock Status Update

Ryon Kurth



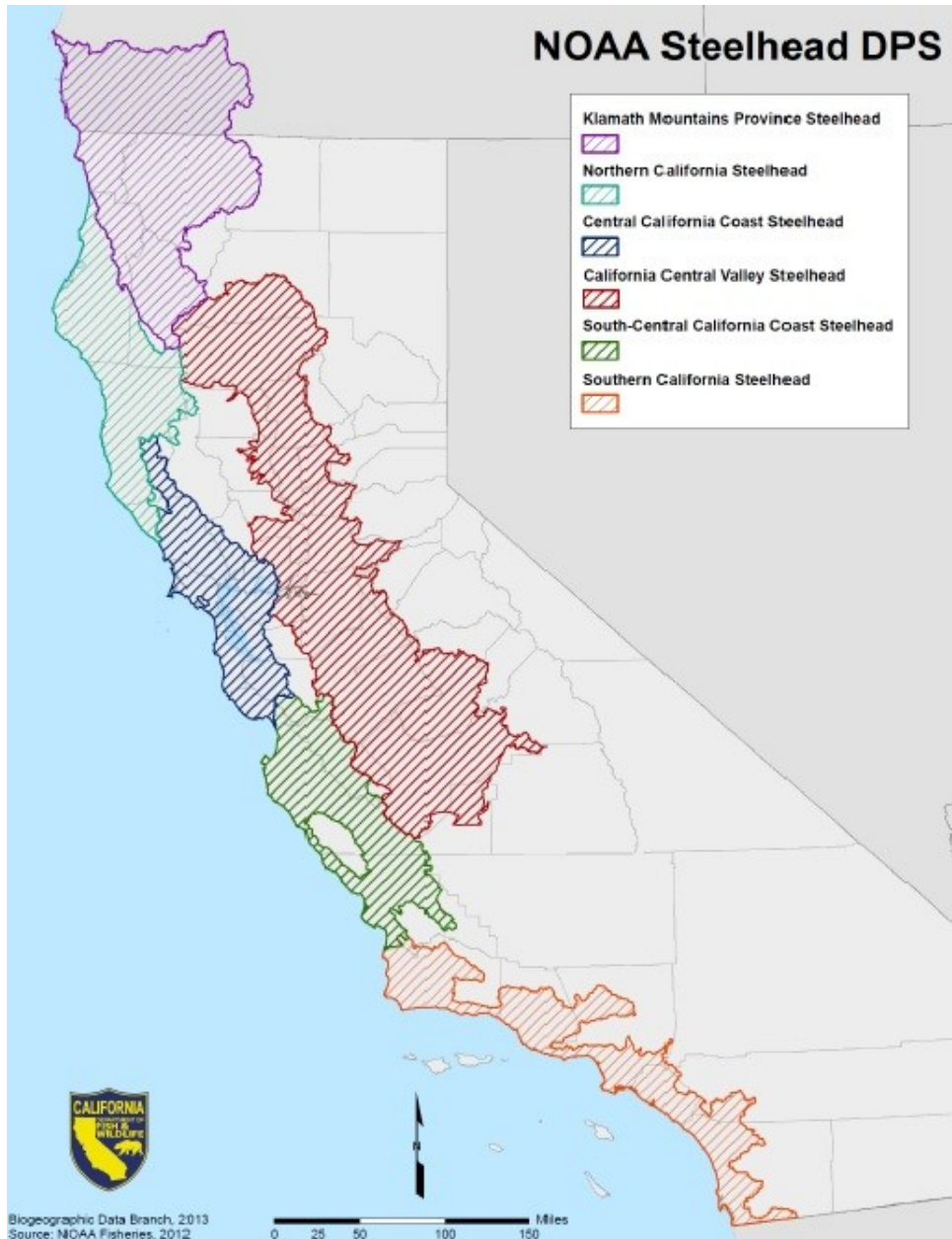
RAINBOW (Steelhead form)
Oncorhynchus mykiss

California Department of Fish and Wildlife
1010 Riverside Parkway
West Sacramento, California 95605

Phone: (916) 531-3191

Email: Ryon.Kurth@wildlife.ca.gov

California Steelhead Distinct Population Segments (DPS)



- **Klamath Mountains Province**
Status: Listing Not Warranted (2001)
- **Northern California**
Status: ESA Threatened (2000)
- **Central California Coast**
Status: ESA Threatened (1997)
- **Central Valley**
Status: ESA Threatened (1998)
- **South-Central California Coast**
Status: ESA Threatened (1997)
- **Southern California**
Status: ESA Endangered (1997)

Steelhead Monitoring Methods



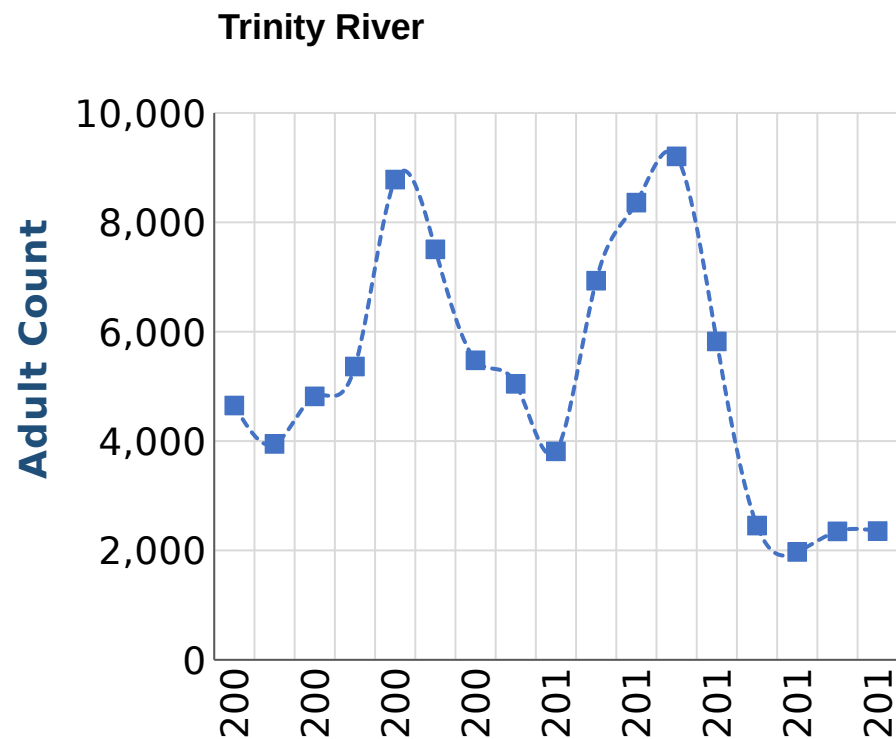
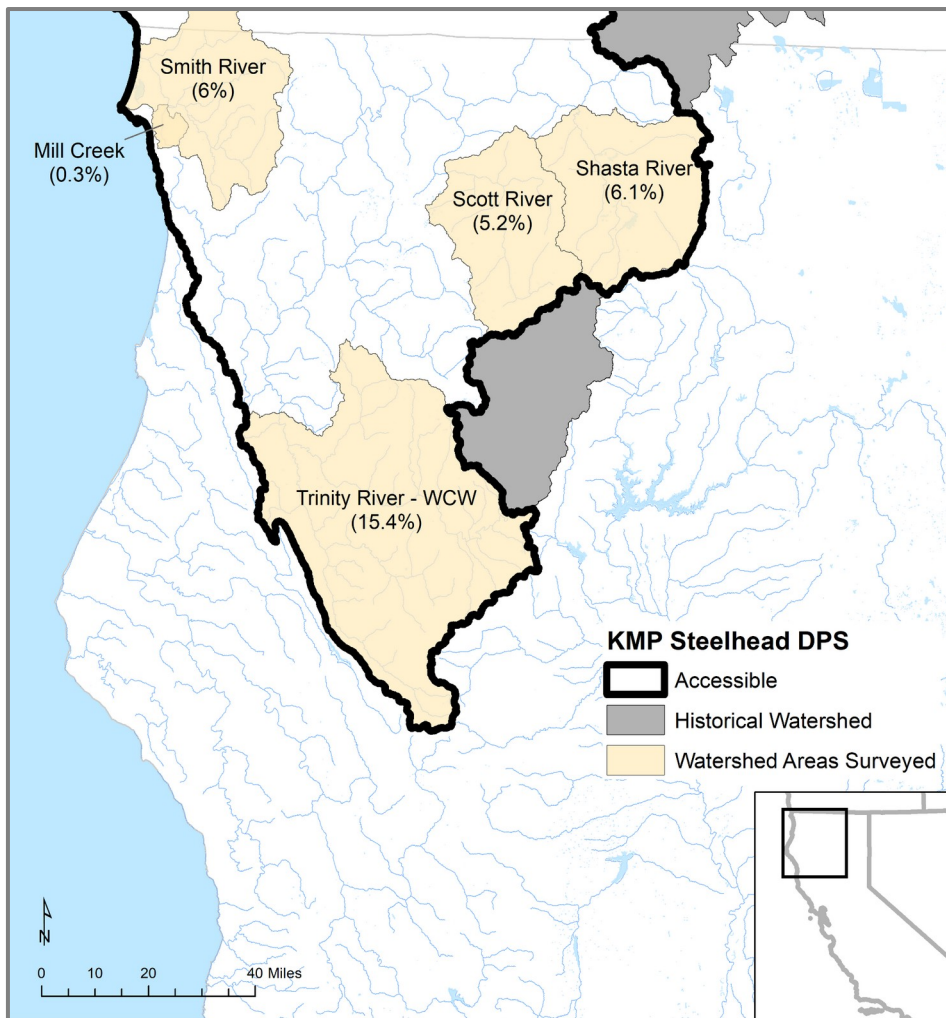
- Monitoring trends in adult and redd counts or abundance through time

- Weir counts – trapping, video, VAKI, DIDSON/ARIS

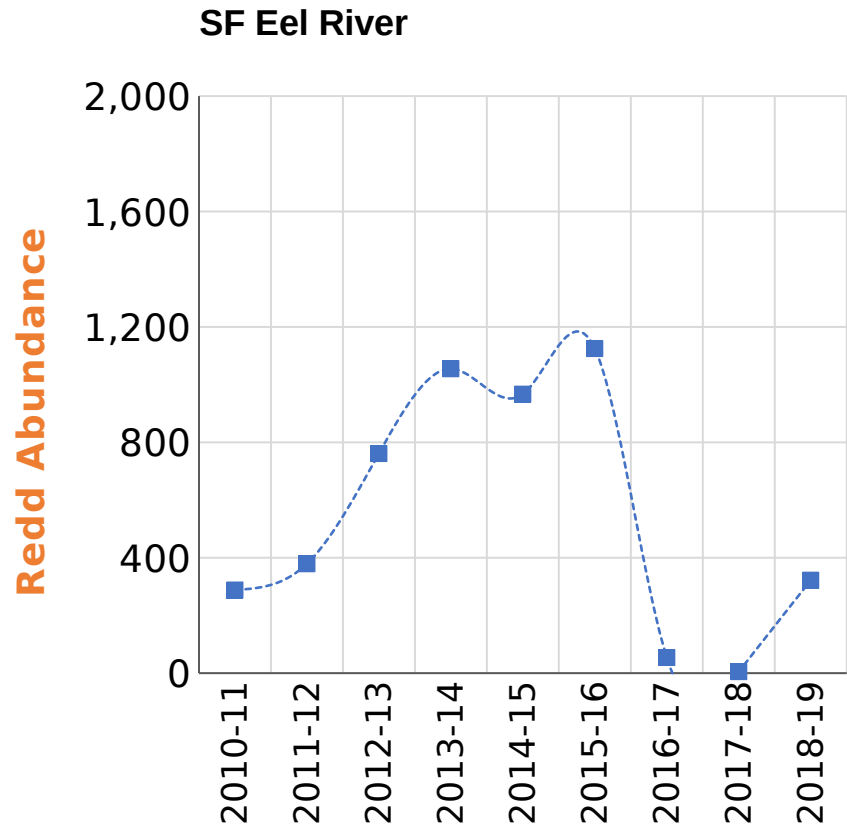
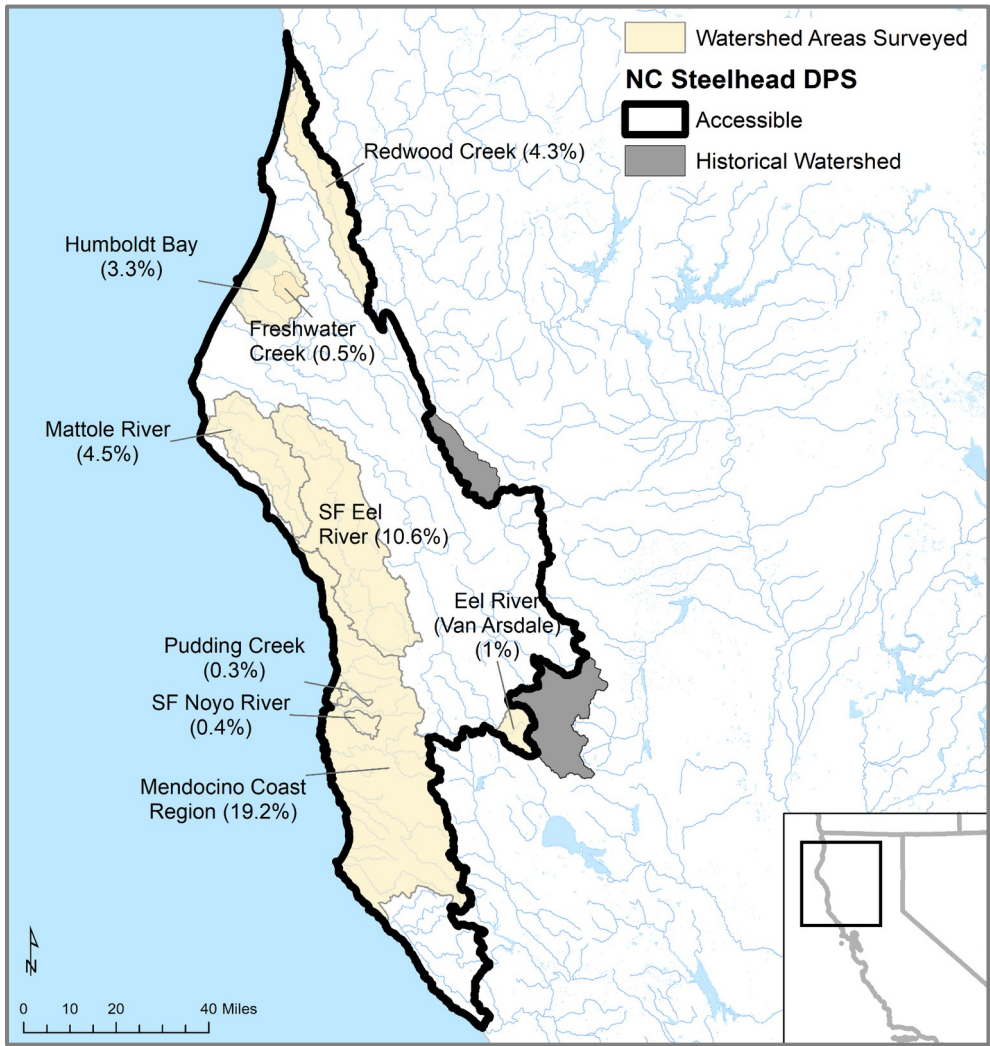
- Some surveys spatially and/or temporally limited



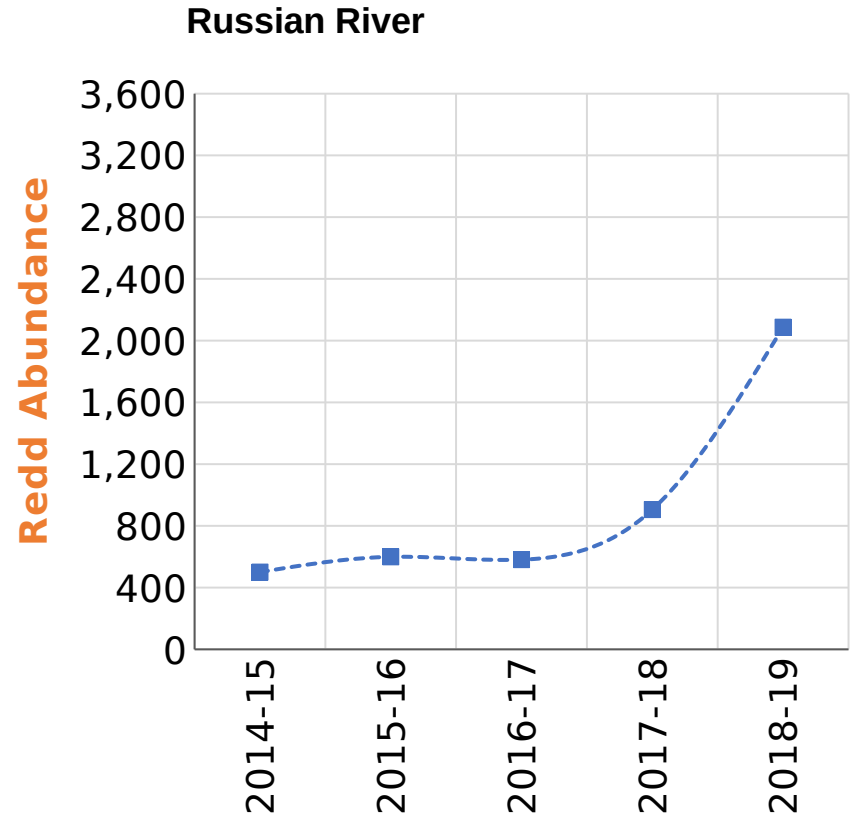
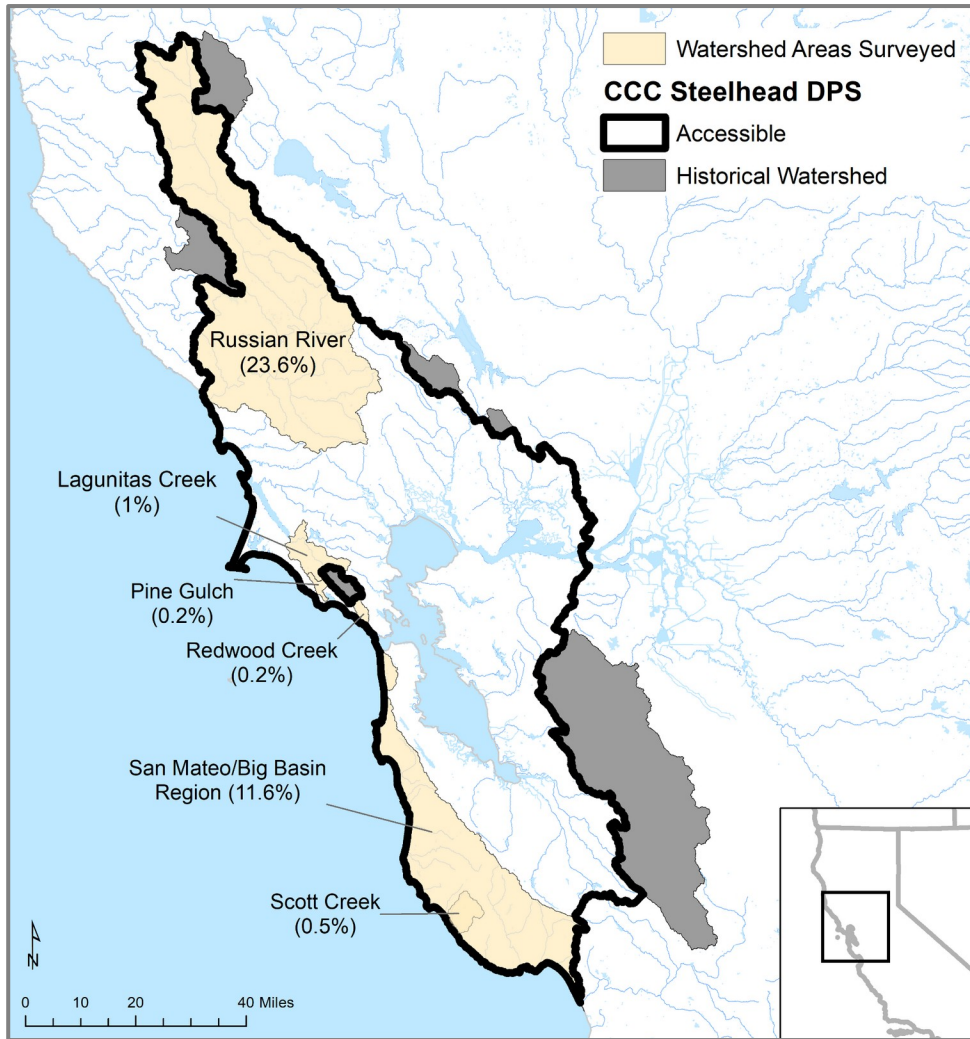
Klamath Mountains Province DPS



Northern California DPS



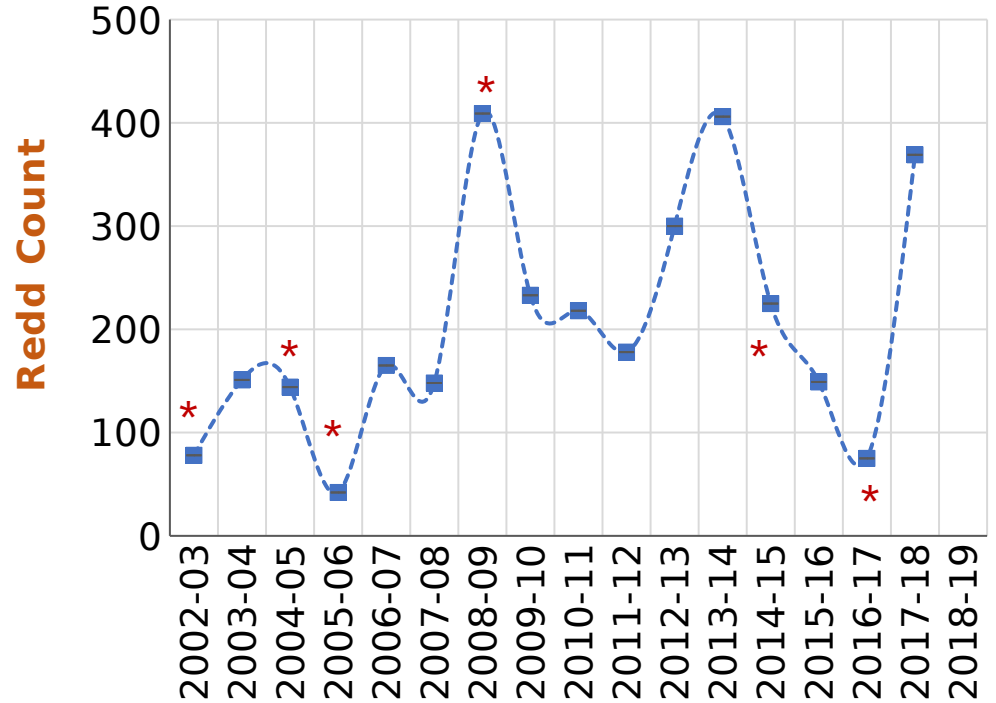
Central California Coast DPS



California Central Valley DPS

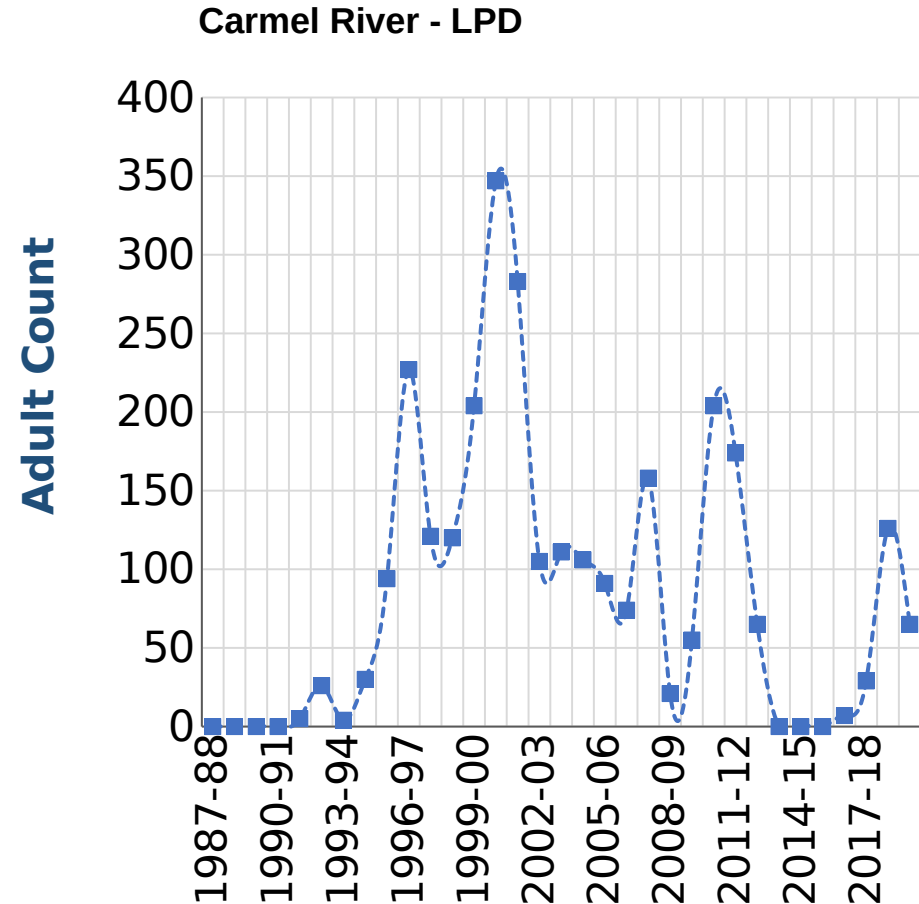
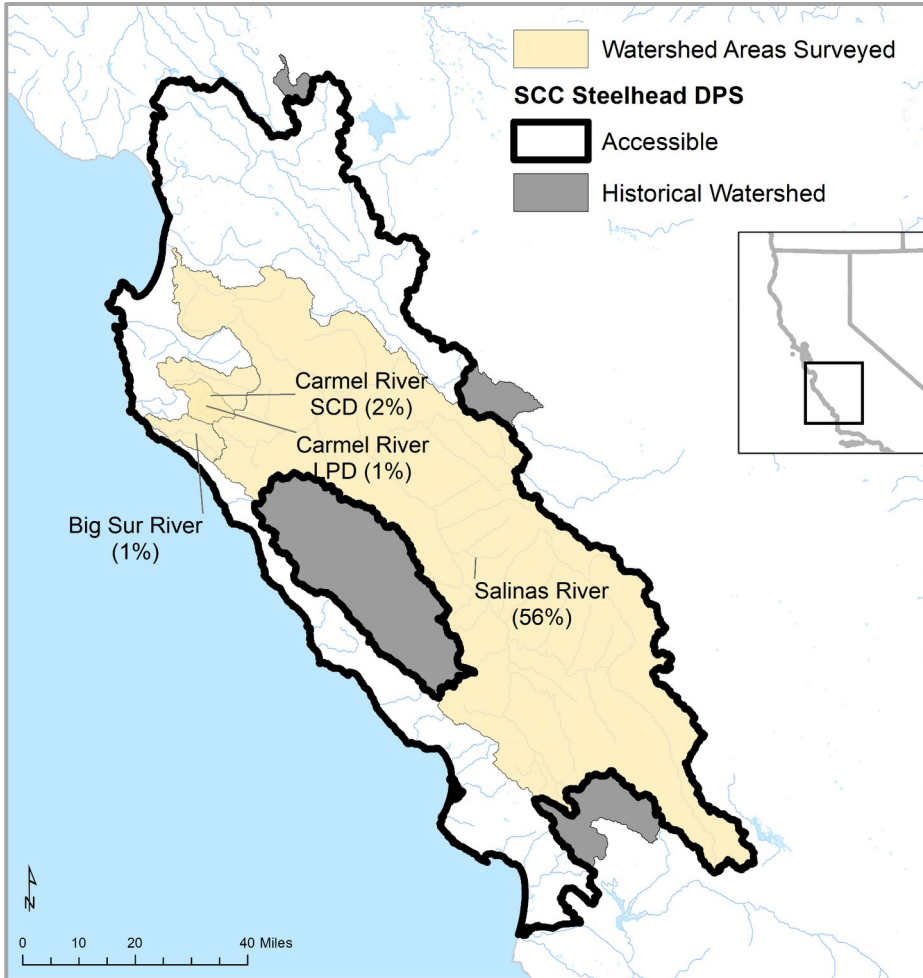


Clear Creek

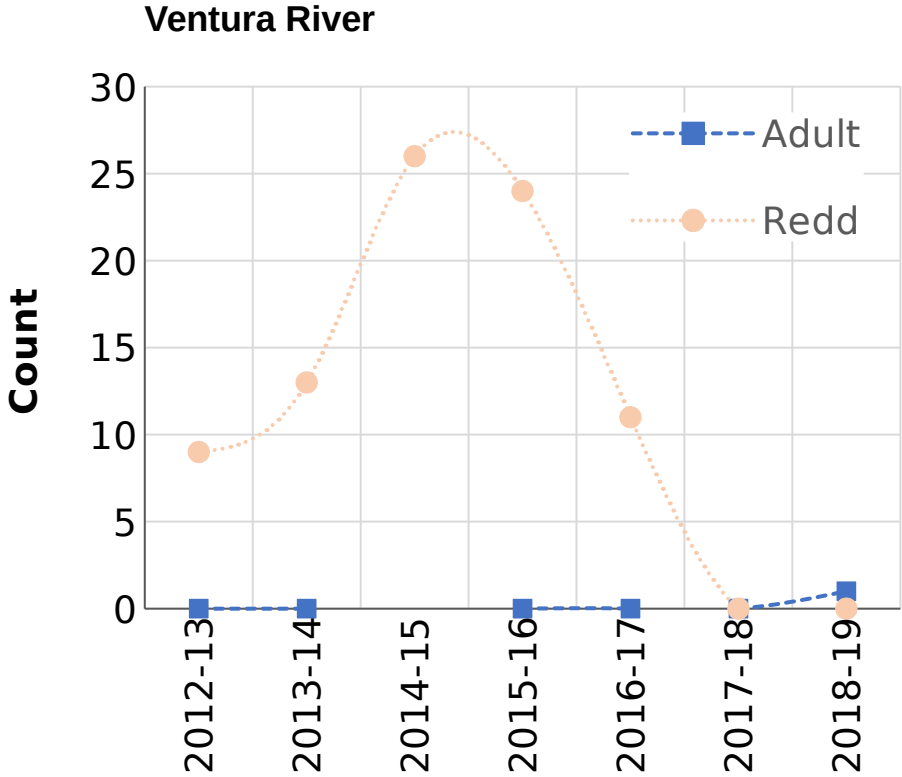
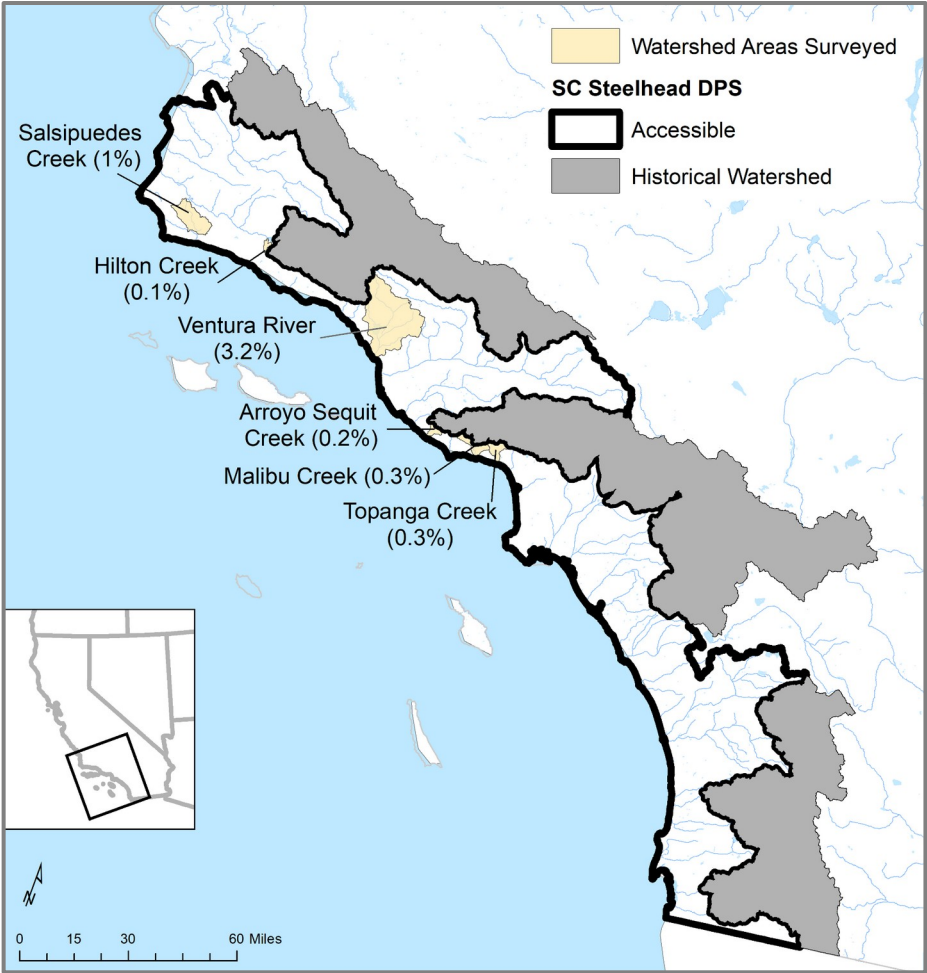


* incomplete

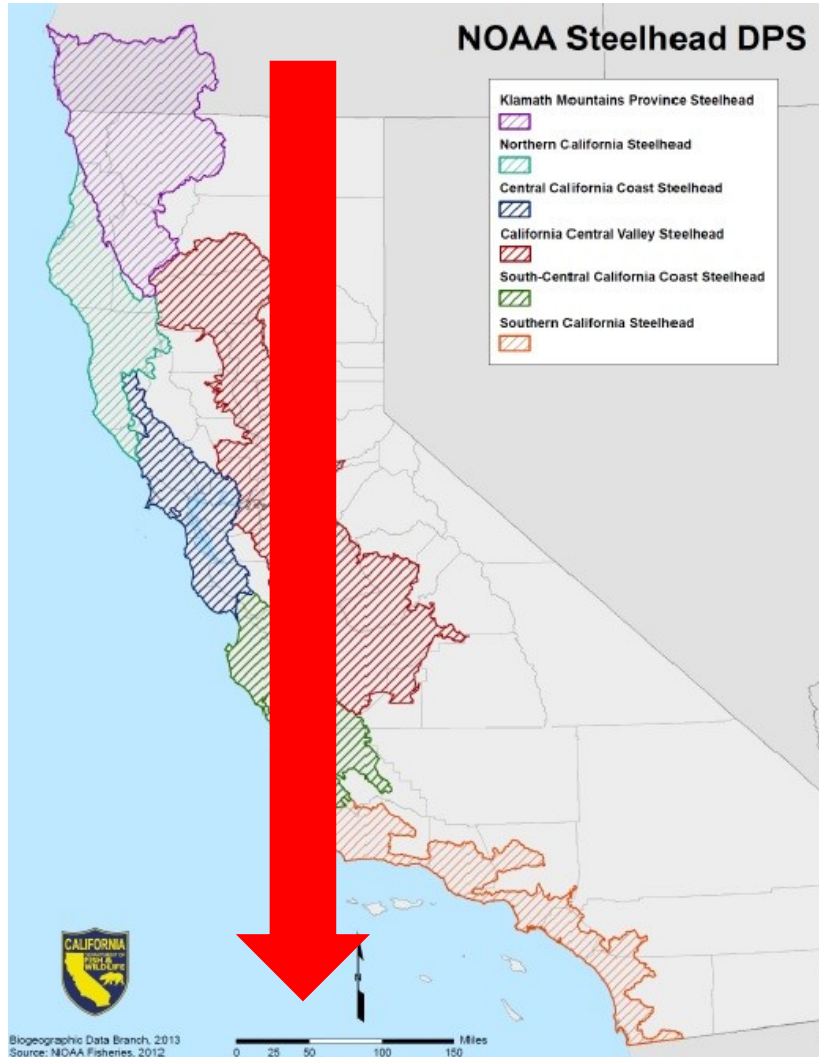
South-Central California Coast DPS



Southern California DPS



California Steelhead Trends

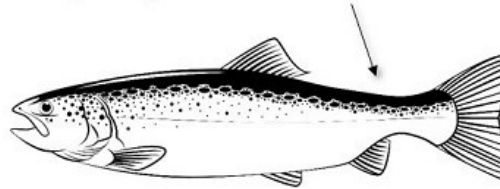


Summary

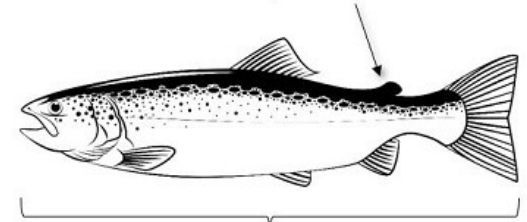
- **Overall populations remain depressed**
- **Generally faring worse from north to south**

California Steelhead Report and Restoration Card

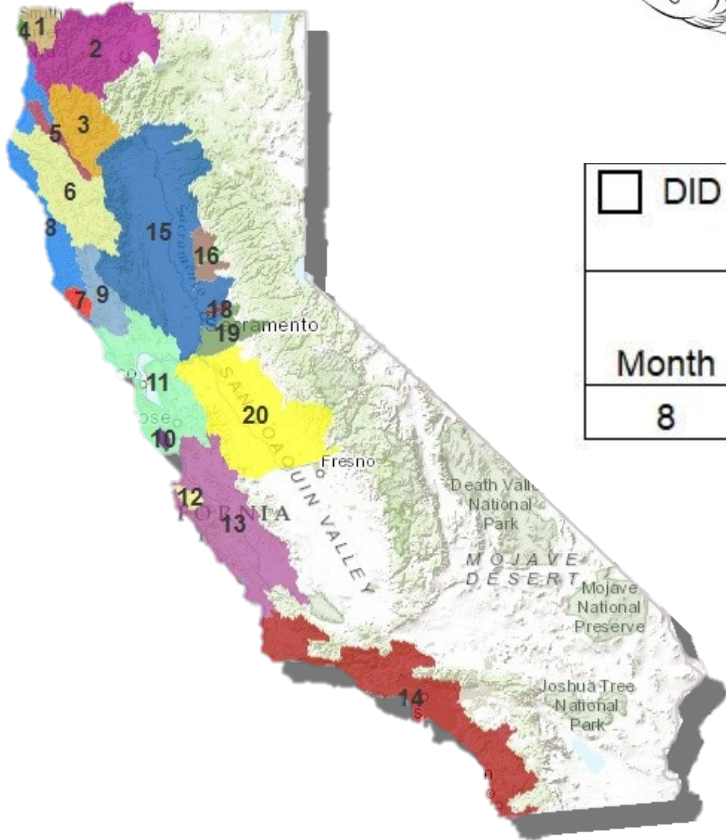
HATCHERY STEELHEAD
Missing adipose fin with healed scar



WILD STEELHEAD
Intact adipose fin



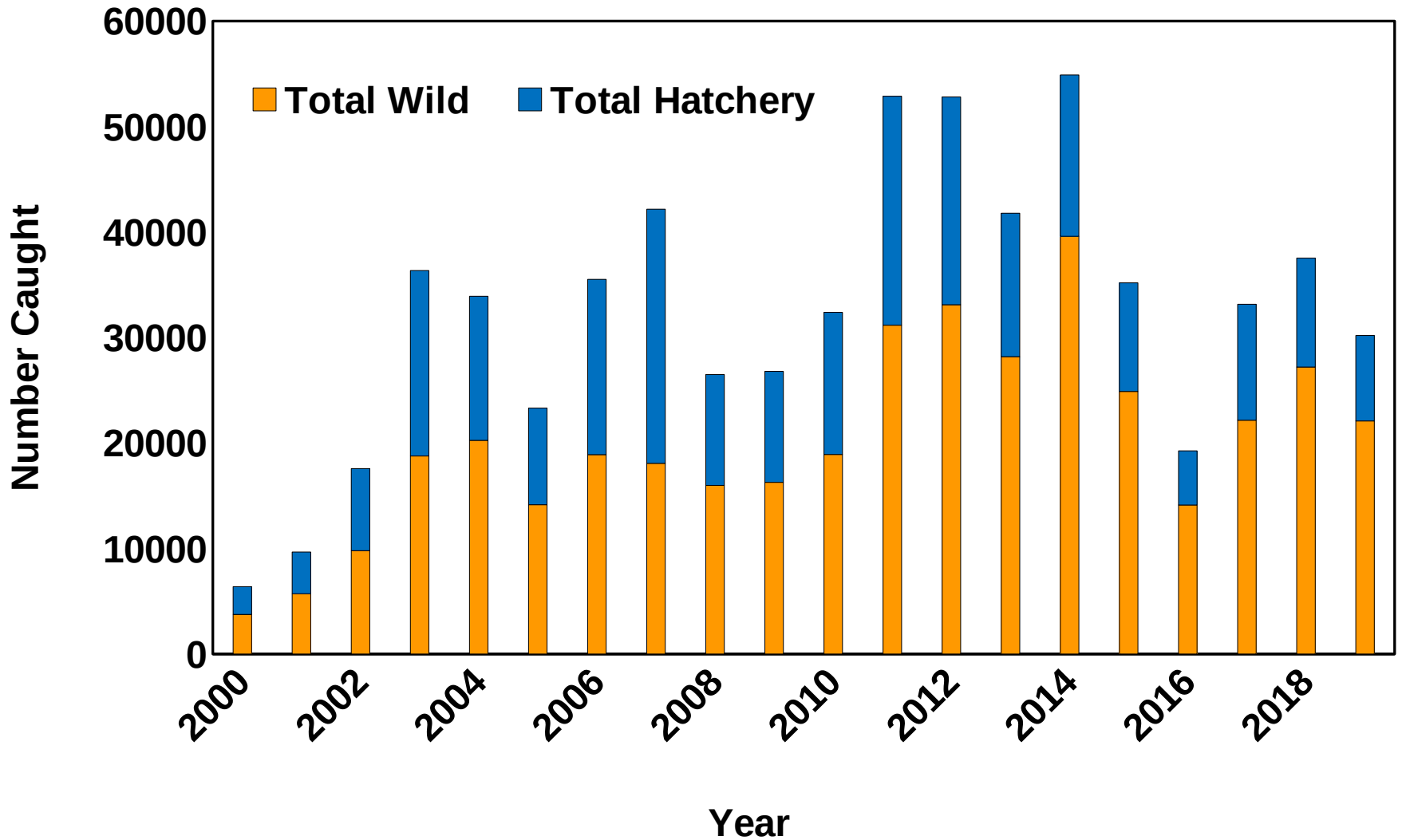
>16 inches



<input type="checkbox"/> DID NOT FISH FOR STEELHEAD STEELHEAD REPORT & RESTORATION CARD						
Month	Day	Location Code	Wild Released	Hatchery Kept	Hatchery Released	Hours Fished
8	4	5	2	11	1	4

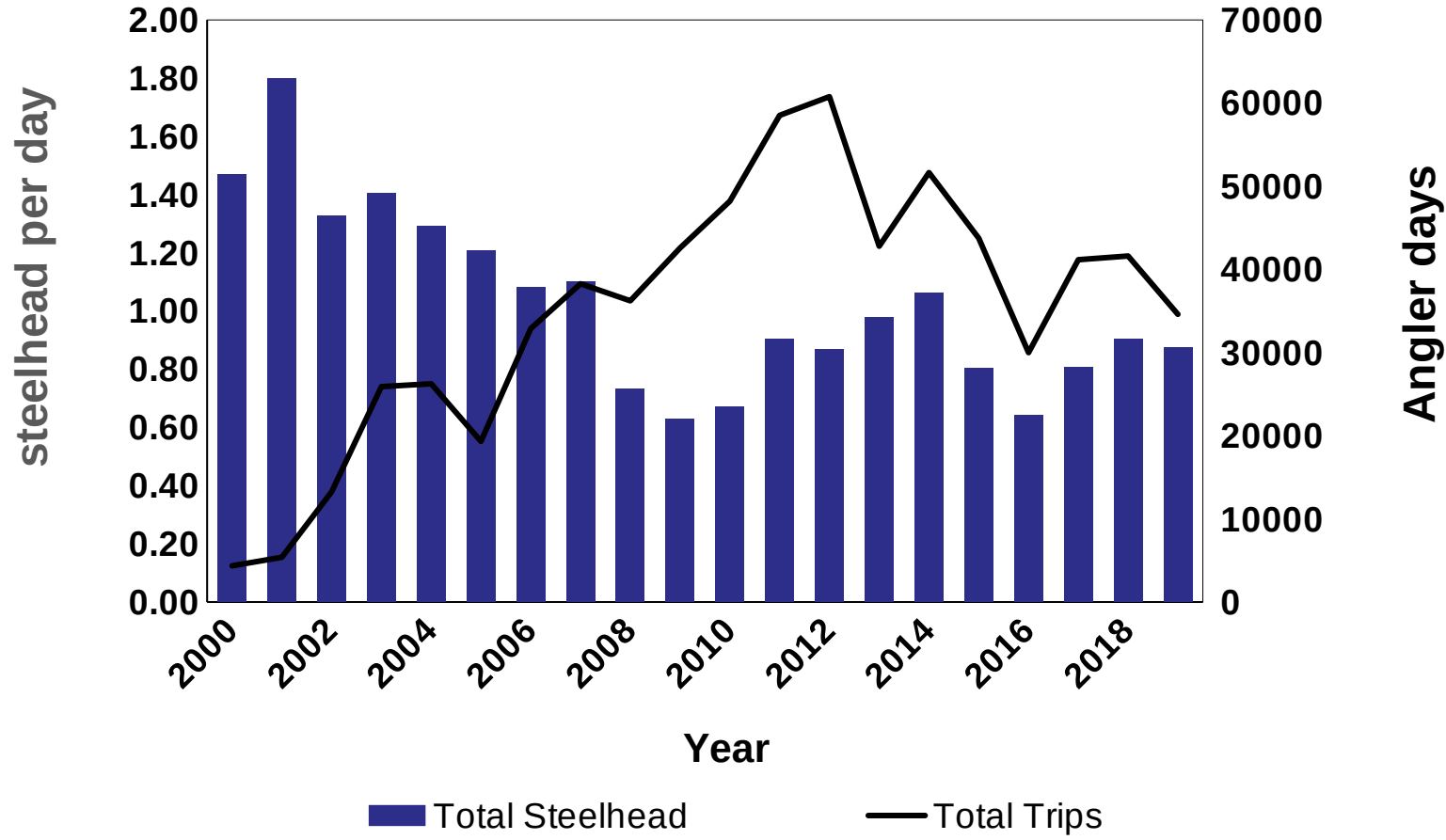
California Steelhead Report Card Data

Statewide Angler Reported Catch 2000-2019



California Steelhead Report Card Data

Catch Rate and Days Fished 2000-2019



California Steelhead Management News

- Petition to list summer steelhead in the Northern California DPS as endangered under the California Endangered Species Act.
- NOAA 5-year status updates published soon.
- New framework for monitoring Southern CA steelhead populations published soon.
- New monitoring plans being developed for the San Joaquin River watershed.



Ryon Kurth
California Department of Fish and Wildlife
1010 Riverside Parkway
West Sacramento, California 95605

Phone: (916) 531-3191
Email: Ryon.Kurth@wildlife.ca.gov