

Alaska Steelhead Stock Status



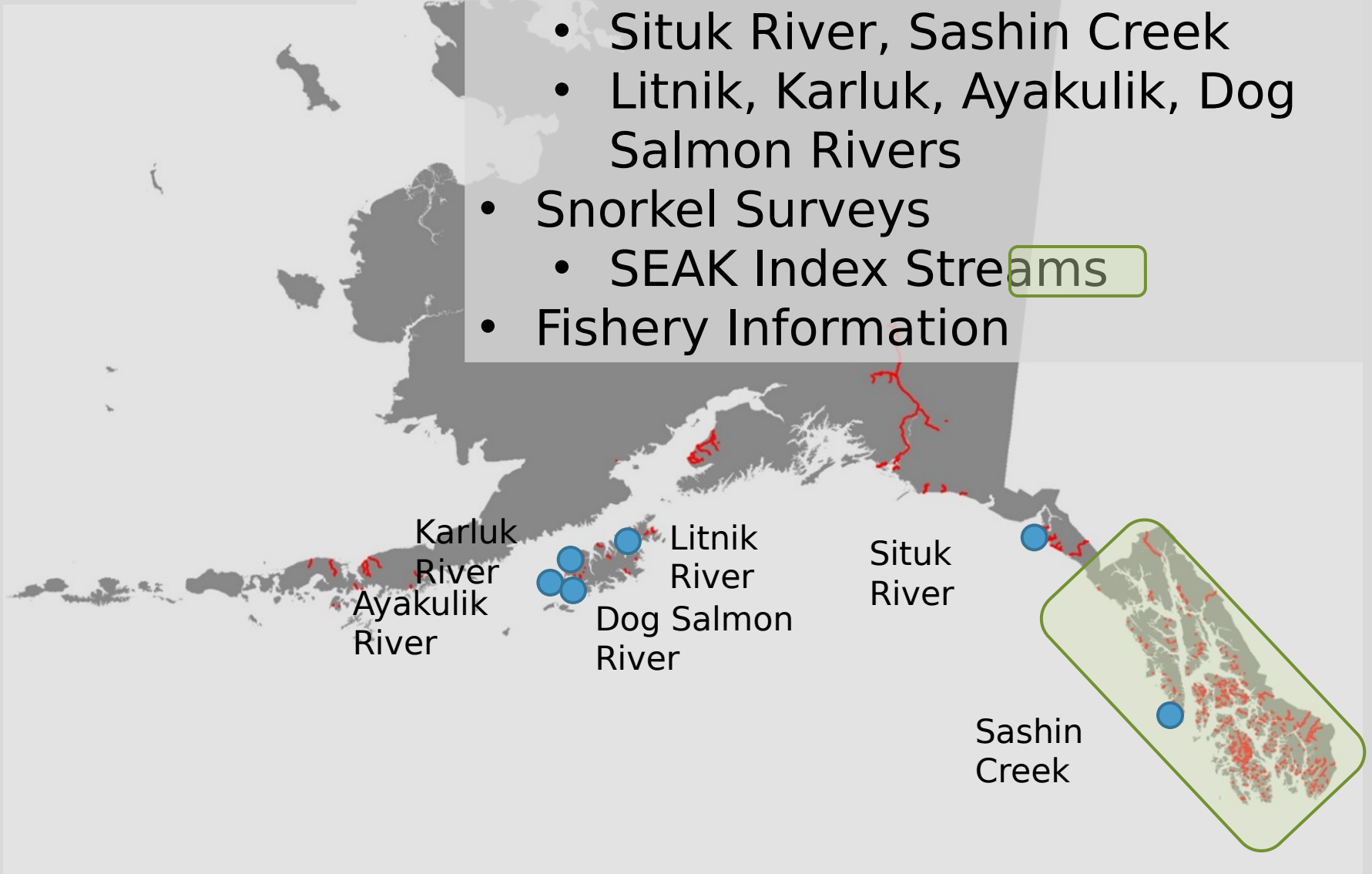
Matt Catterson
Alaska Department of Fish and Game
Sport Fish Division



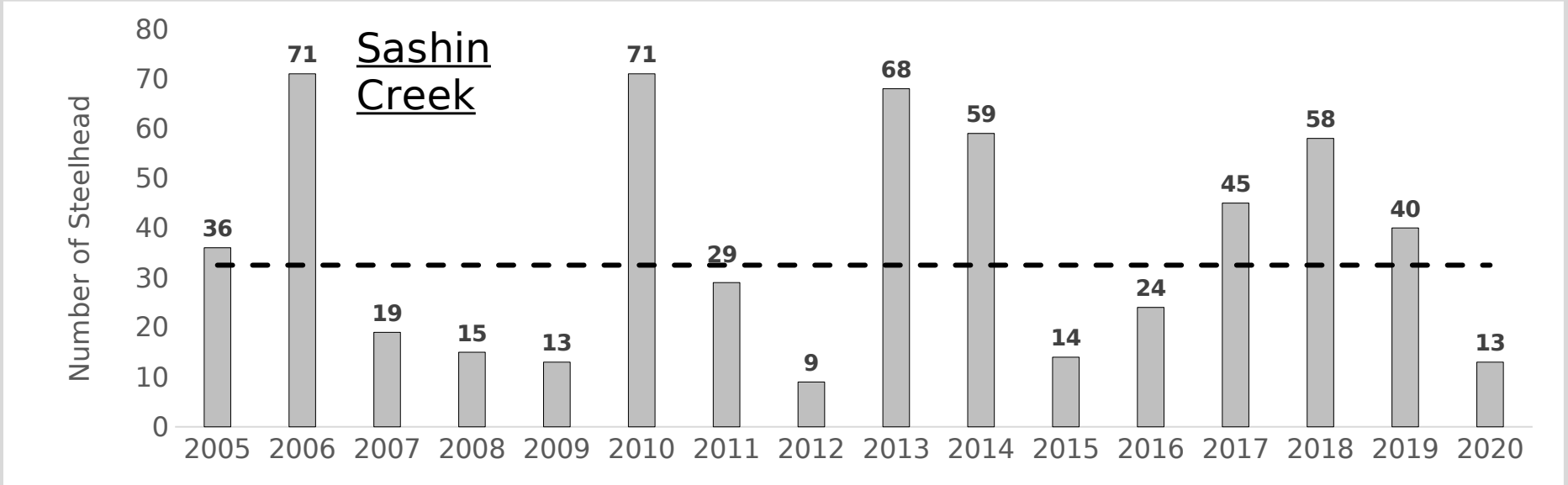
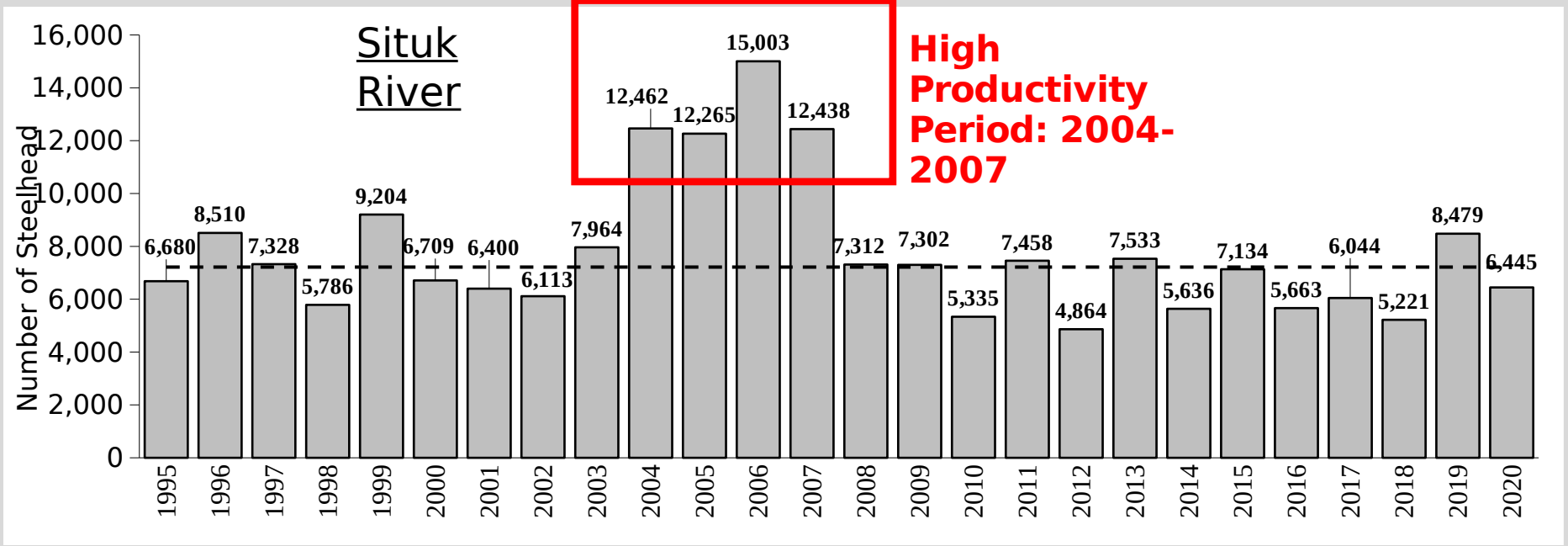
Steelhead in Alaska

Assessment Methods

- Steelhead Streams
- Weirs
 - Situk River, Sashin Creek
 - Litnik, Karluk, Ayakulik, Dog Salmon Rivers
- Snorkel Surveys
 - SEAK Index Streams
- Fishery Information



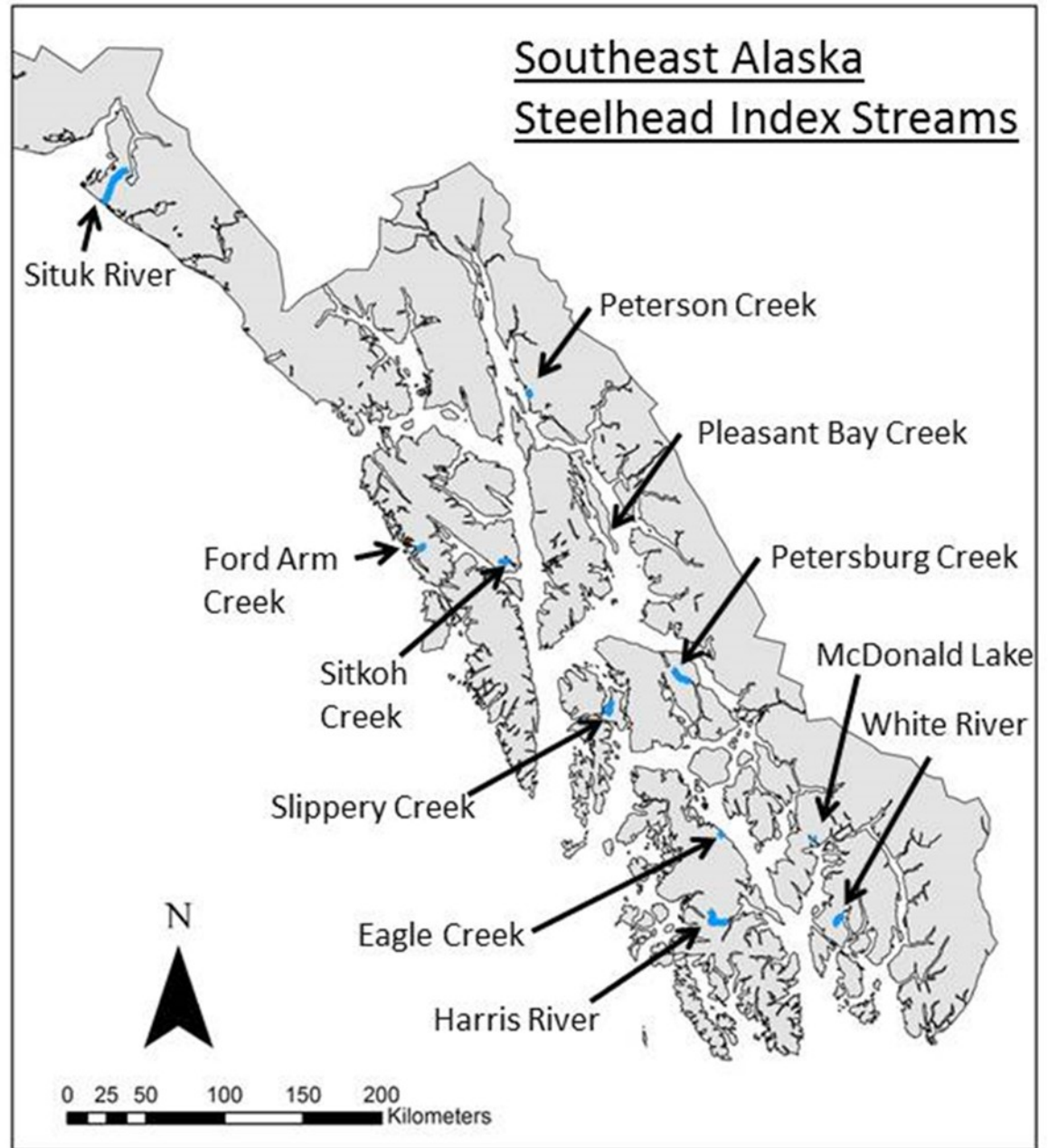
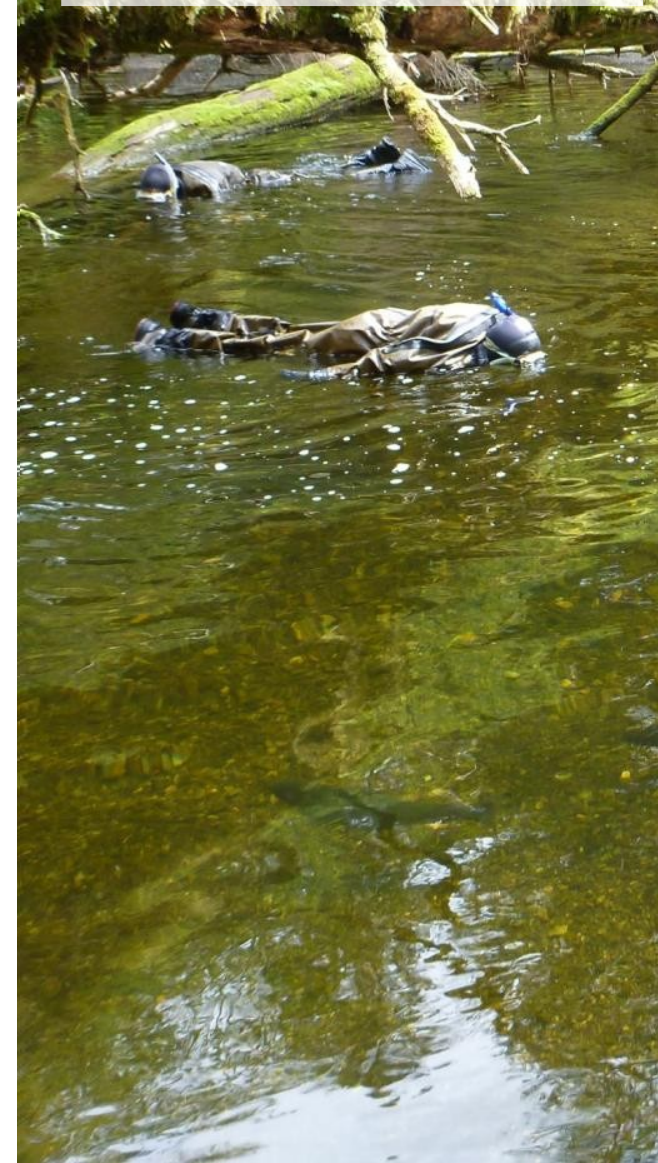
Weir Counts - Southeast Alaska



Snorkel Surveys



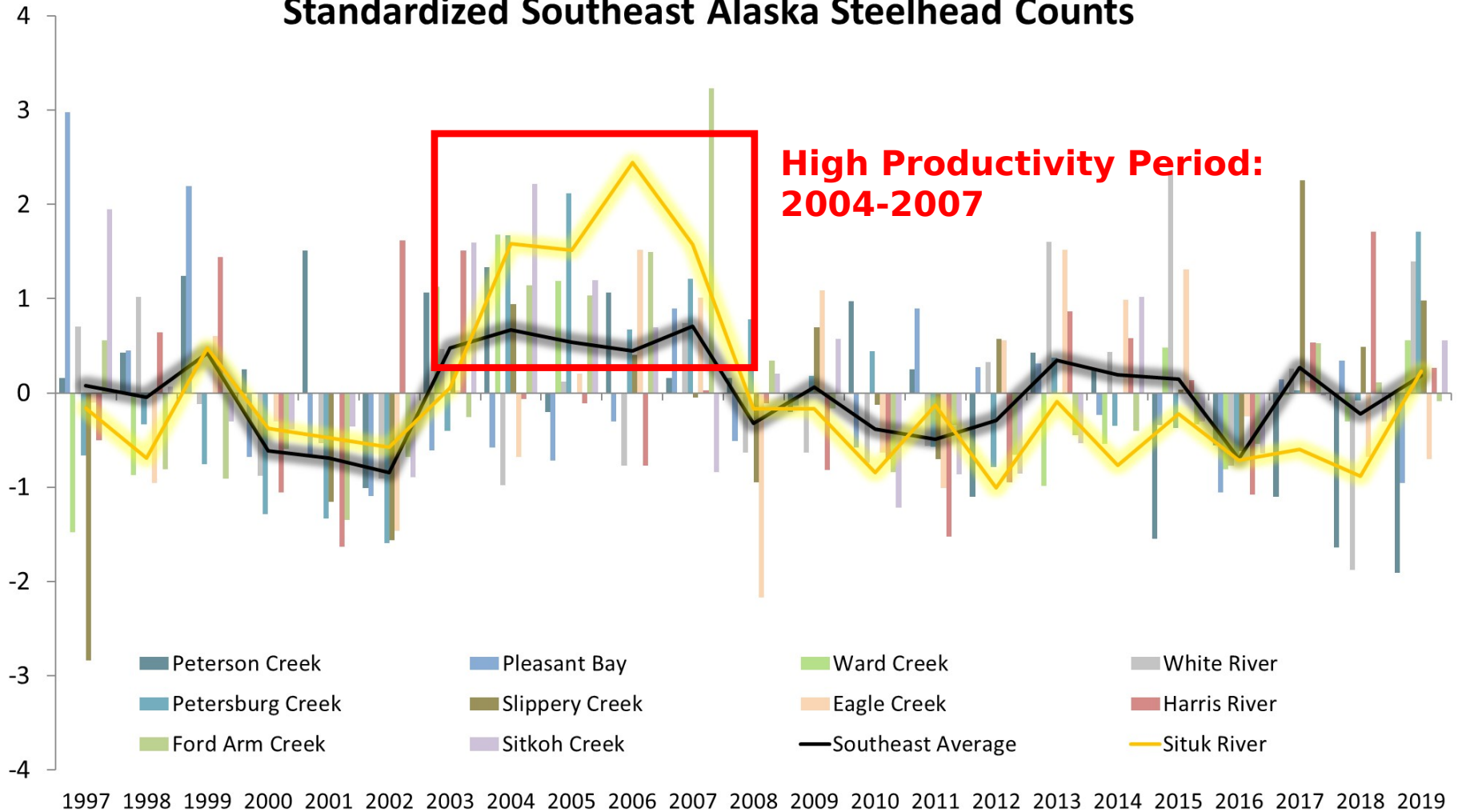
Snorkel Surveys



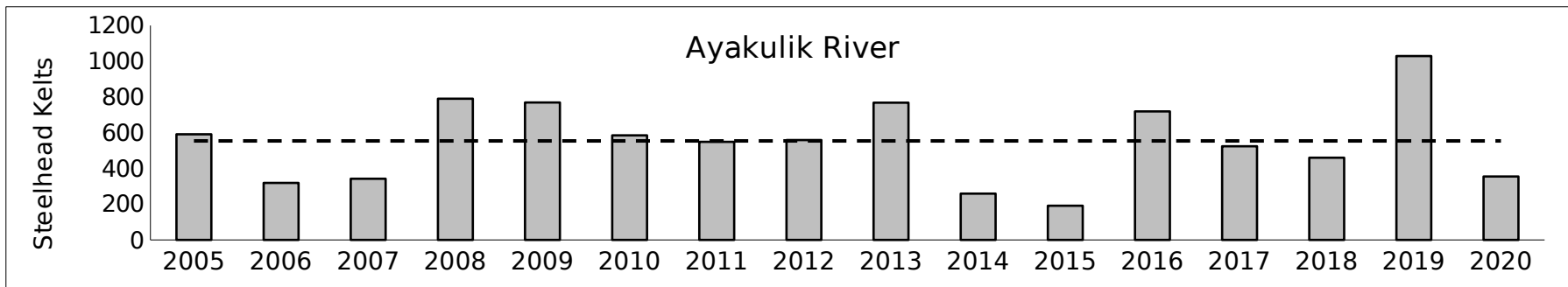
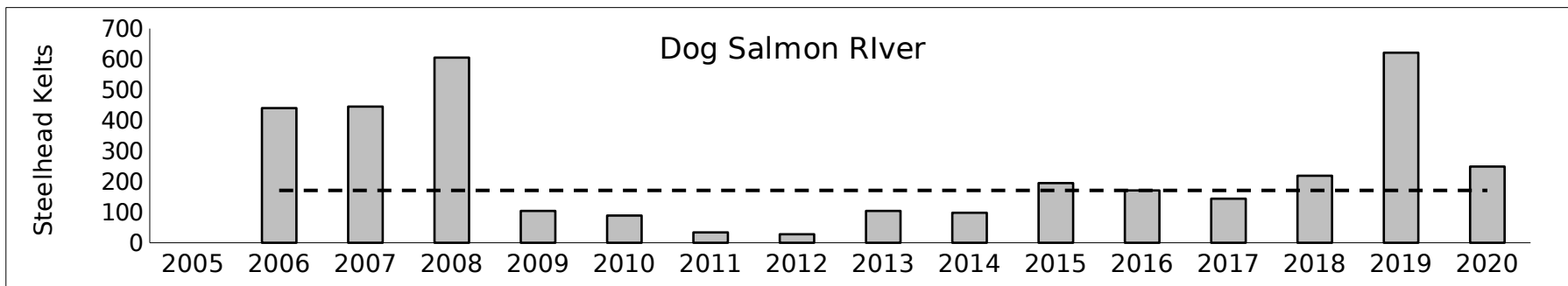
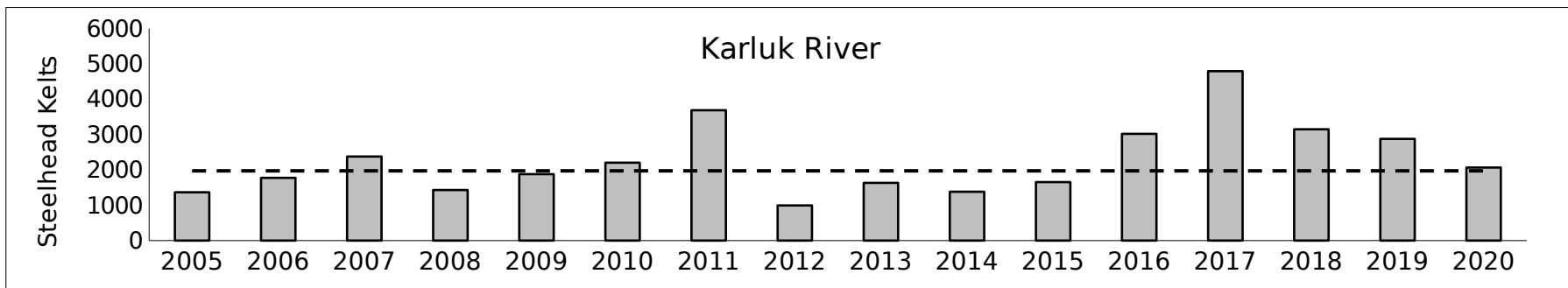
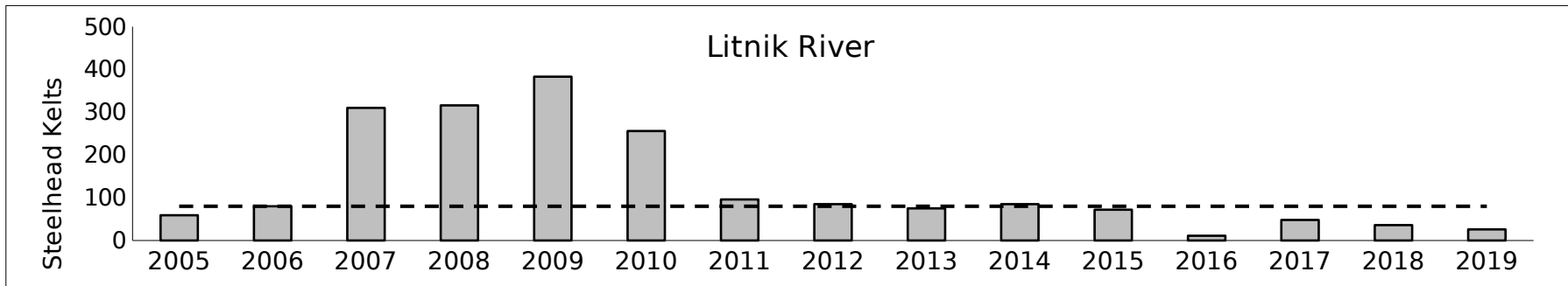
Snorkel Surveys



Standardized Southeast Alaska Steelhead Counts



Weir Counts - Southcentral Alaska



Conclusion

- Sport fishery continues to trend towards all catch and release with very low harvest rates.
- Abundance trends across Alaska are generally stable. 2019 had stronger returns while 2020 were closer to average, but some individual stocks remain at low abundance levels.
- Size attributes remain within normal variation where assessed. 2019 was above average.
- Continued opportunities for steelhead research in Alaska.
- Consistent stock monitoring and conservative management are





Acknowledgements- ADFG Colleagues: Kelly Reppert, Troy Tydingco, Patrick Fowler, Dan Teske, Richard Chapell, David Love, Craig Schwanke, Tyler Polum, Brian Marston, Bob Chadwick, Jeff Nichols; Megan McPhee (UAF), Trent Sutton (UAF), Charlie Waters (NOAA), Jordan Watson (NOAA), Nate Catterson (USFS), Justin Koller (USFS)