



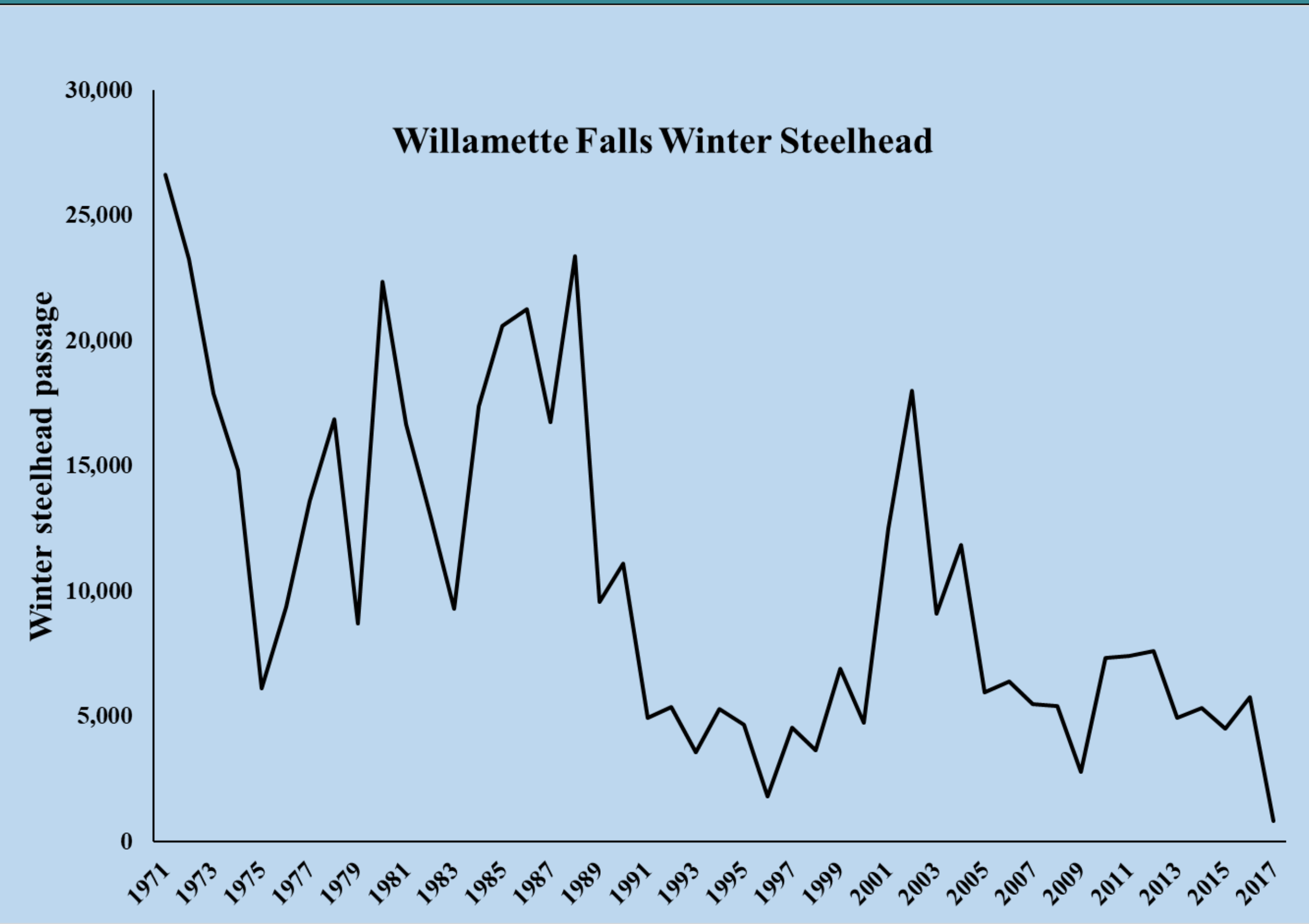
Planning Research and Monitoring of Native Winter Steelhead In the Upper Willamette Basin

Luke Whitman, Brian Cannon, Mike Hogansen and Mark Lewis



Introduction

- Only spring Chinook and winter steelhead native upstream of Willamette Falls
- Listed as threatened under ESA in 1999
- Returns continue to decline
- Current spawning distribution and life history pathways are poorly understood

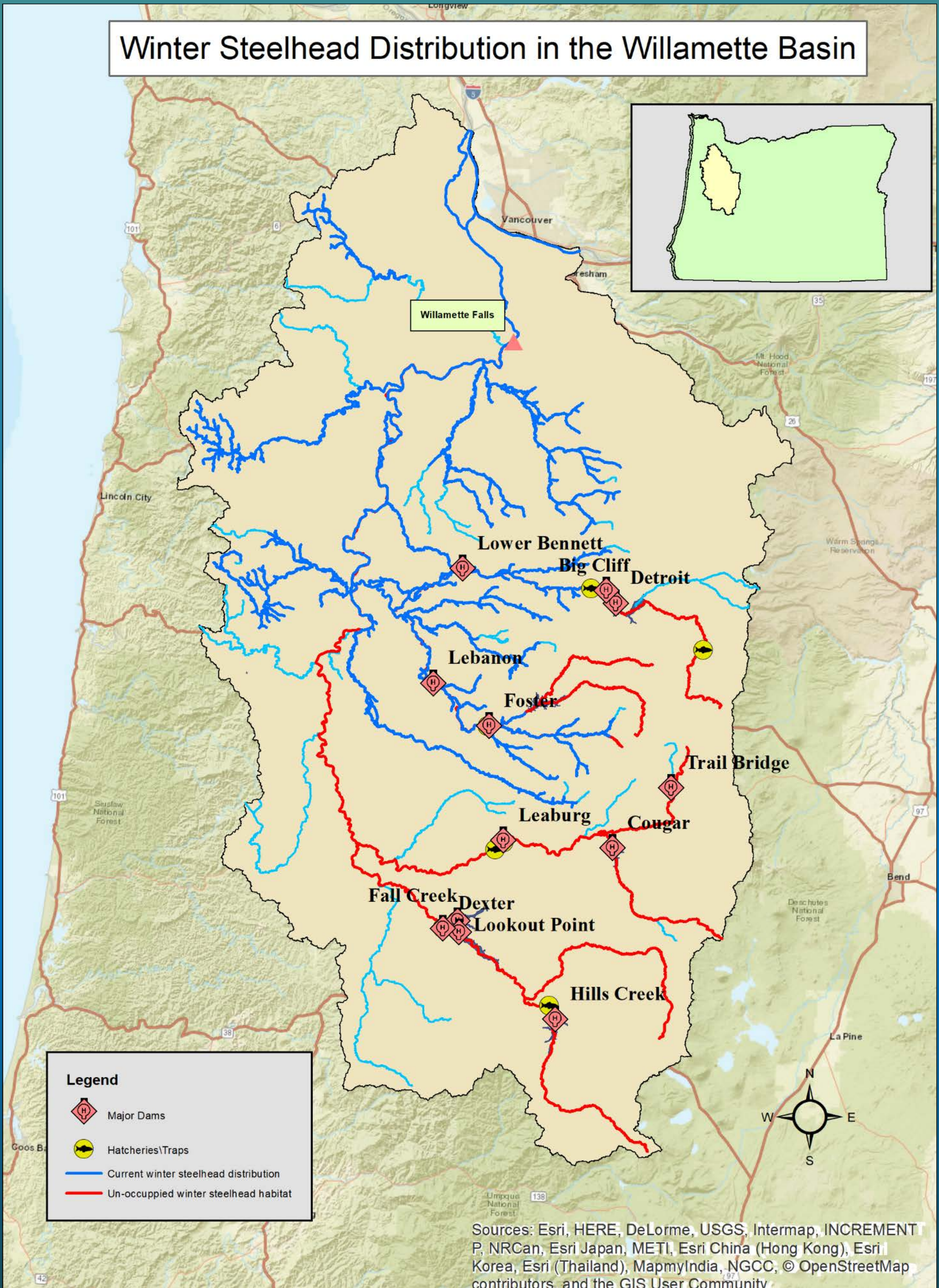


Objectives

- Assess current timing and distribution of spawning population
- Estimate age structure of the spawning population
- Identify juvenile life histories
 - Freshwater residency
 - Migration timing of smolts
 - Survival



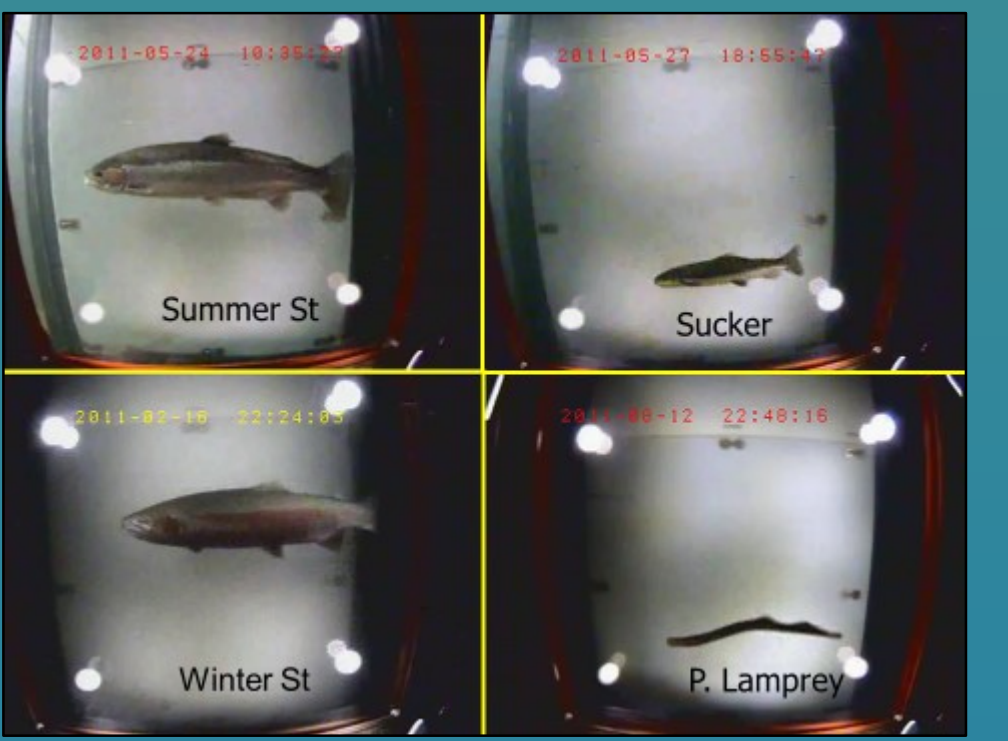
Oregon Adult Salmonid Inventory and Sampling Oregon Department of Fish and Wildlife, Corvallis Research Lab



Proposed Methods

Adults

- Spawning ground surveys
- Collect tissue and scales
- Video monitoring at fishways



Juveniles

- Rotary screw traps
- Beach seines
- Hydroelectric facilities
- PIT tagging



- Other methods?