

Fish Farm Siting and Operations

Gary Caine, BCMAFF



Presentation Outline

Siting Process

- Approval Process*
- Land Use, Biological and Ecological Siting Factors*



Operational Management

- Management Plan Compliance*
- Escapes*
- Fish Health*

Research and Development

Conclusion

Siting Process

Agencies Involved:

Ministry of Agriculture, Food and Fisheries

Land and Water British Columbia Inc.

Ministry of Water, Land and Air Protection

Ministry of Sustainable Resource Management

Fisheries and Oceans Canada

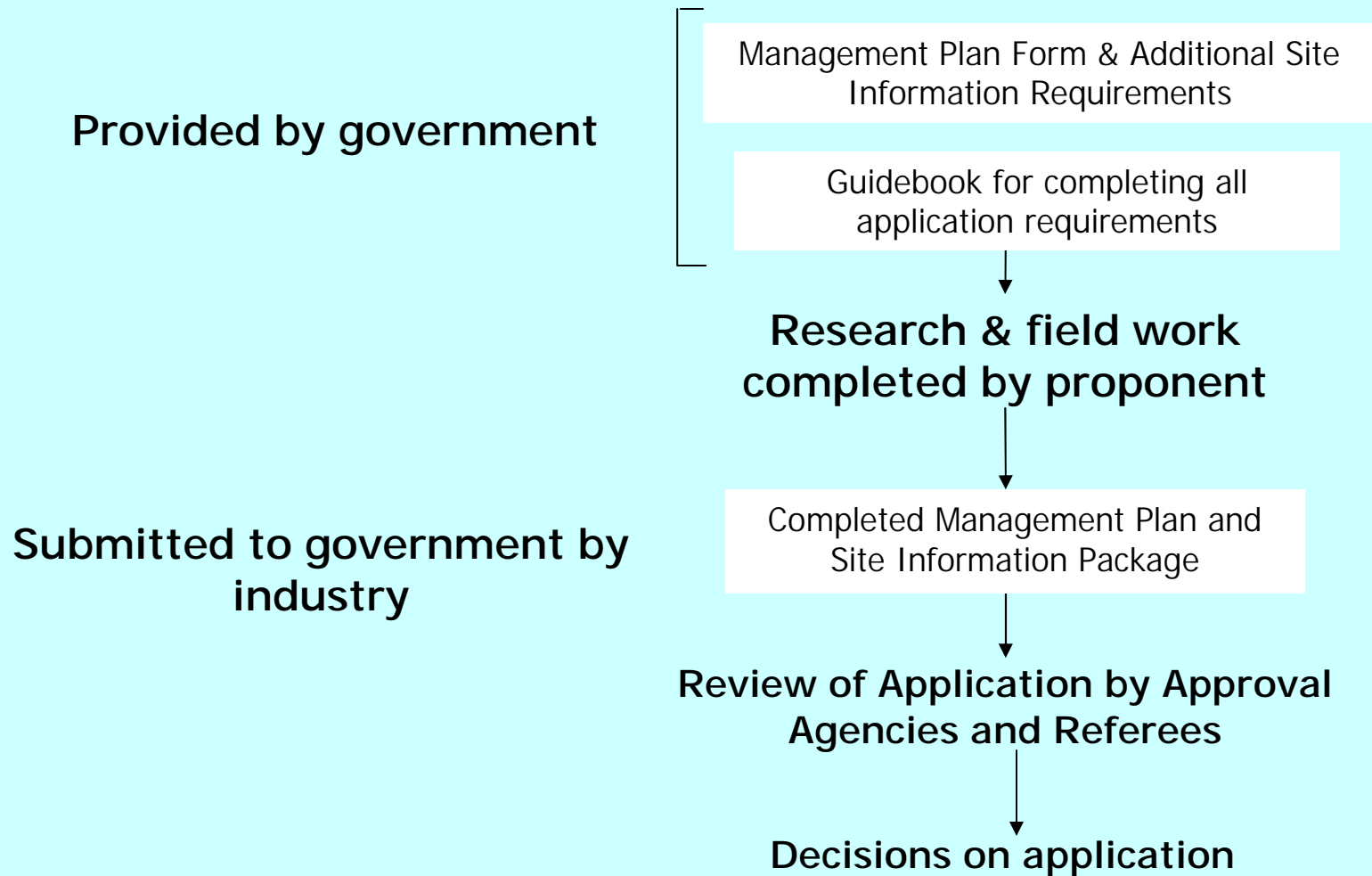
Local Governments



GUIDE TO INFORMATION REQUIREMENTS FOR
MARINE FINFISH AQUACULTURE APPLICATIONS



Application Process



Hierarchy of Siting Factors



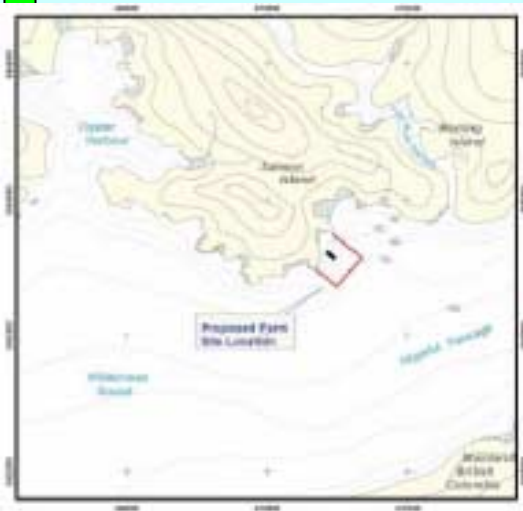
Coastal Zone Plans

Identify a range of use opportunities to guide decision makers



Local Government Zoning

Establish permitted activities in regional district areas



Site Specific Applications

Applications treated on a site-by-site basis using Siting Criteria guidelines

Provincial Siting Criteria

Designed from recommendations of the 1997 Salmon Aquaculture Review

Establish guidelines for locating fish farm sites to minimize impacts to:

Wild fish and their habitats

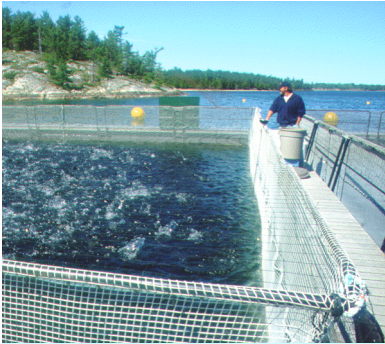
Traditional coastal users

First Nations rights, practices and customs

Wildlife and wildlife habitat

Visual and social values associated with the coastal experience





Operations Management



MAFF's Compliance and Enforcement Program includes the following elements:

- Promotion of awareness, education and training activities*
- Promoting industry best practices and use of best available technologies*
- Developing co-operative partnerships with industry, First Nations, coastal stakeholders, and local communities*
- Mandatory compliance with approved management plans*
- Conducting annual monitoring, inspections and audits*
- Remediation through a tiered system of actions for non-compliance*
- Conducting investigations on alleged licensing and statutory violations*

Escapes

Prevention is the single most effective strategy to address environmental risks from escapes

Elements of the Escape Prevention Initiative

- *Provincial Policy on Escape Prevention*
- *Monitoring required under Regulation*
- *All farms required to have an Escape Prevention and Predator Exclusion Plan in the Management Plan*
- *Specific requirements on frequency of net inspections and net strength testing*
- *Response plans and staff training*

Provincial objective is to achieve “zero escapes” over time





Fish Health Management

BC has a comprehensive policy designed to improve monitoring and regulation of fish health and disease issues in the aquaculture industry

Components of the Fish Health Initiative:

- 1. Fish Health Management Advisory Committee*
- 2. Fish Health Management Plan and Guidelines*
- 3. The BCSFA Fish Health Database*
- 4. Disease Surveillance and Auditing Program and Database*
- 5. The Fish Health Annual Report*

Research and Development

Federal and Provincial funding has been committed to independent research and activities that will address existing and emerging issues of concern in the Pacific Northwest.

These include:

- BC Aquaculture Research and Development Committee (BCARDC)*
- UBC Centre for Aquaculture and the Environment*
- Federal Aquaculture Collaborative Research and Development Program*
- Aquanet*



Conclusion

British Columbia is taking a comprehensive approach to managing fish farming to ensure the economic opportunities afforded by our unique coastline will continue to be developed in a sustainable manner.

