

West Coast and Alaska Marine Fuel Prices 2016 - 2018

Annual Report



Economic Fisheries Information Network
Pacific States Marine Fisheries Commission

205 S.E. Spokane Street, Suite 100
Portland, OR 97202
efin@psmfc.org * www.psmfc.org/efin
(503) 595-3100 voice * (503) 595-3232 fax

Marine Fuel Prices

Table of Contents

This document was created to assist users of marine fuel price data from the Economic Fisheries Information Network (EFIN) Website. It contains the following information:

General Information

- Data Retrieval Location
- Contacts

Sample

- Port Selection Method
- Selected Ports
- Changes Since Inception
- Fuel Suppliers

Data Collection

- Date of Collection
- Price Data Collected
- Data Availability
- Variable Formats

Data Charts for Alaska, Washington, Oregon & California

- 2016-2018 State-Level Summary
 - 2018 State-Level Summary
 - 2017 State-Level Summary
 - 2016 State-Level Summary
- 2016-2018 Regional-Level Summary for Alaska
 - 2018 Regional-Level Summary for Alaska
 - 2018 Southeast Alaska
 - 2018 Rest of Alaska
- 2016-2018 Regional-Level Summary for Washington
 - 2018 Regional-Level Summary for Washington
 - 2018 Northern Washington
 - 2018 Puget Sound
 - 2018 Washington Coast
- 2016-2018 Regional-Level Summary for Oregon
 - 2018 Regional-Level Summary for Oregon
 - 2018 All Oregon
- 2016-2018 Regional-Level Summary for California
 - 2018 Regional-Level Summary for California
 - 2018 All California

General Information

Data Retrieval Location

This data was retrieved from the Pacific States Marine Fisheries Commission's EFIN Program at <http://www.psmfc.org/efin>.

Contacts

Please direct any questions, suggestions or other comments to:

(503) 595-3100

Geana Tyler
Project Manager
gtyler@psmfc.org

Dave Colpo
Sr. Program Manager
dcolpo@psmfc.org

Sample

Port Selection Method

Alaska

Originally, ports were selected out of discussions with Alaska Department of Fish and Game (ADF&G) and North Pacific Fishery Management Council (NPFMC) staff. The selected ports were chosen to include ports with significant revenue generation, and were broadly geographically representative of commercial fishing ports in Alaska.

California/Oregon/Washington

Ports in Washington, Oregon and California were selected if:

- The port meets at least one of the following:
 - ◊ was included in the National Marine Fisheries Service (NMFS) Southwest Region's collection of fuel prices, which was suspended in 1994;
 - ◊ or was one of the top 25 revenue generating ports* on the West Coast in 1997;
 - ◊ or was one of the top 10 revenue generating ports* in the state in 1997;
- and has a fuel supplier
- and is identified by a single port in the PacFIN port codes (as opposed to a group of ports; e.g., OSF - Other San Francisco Ports)

Changes since Inception

Grouping Changes

- Astoria was grouped with N. Oregon 2001
- Bay Area and Southern California were grouped together in 2004
- Southern California was grouped into All California 2011
- S. Oregon group was merged with All Oregon 2012
- Seattle was grouped into Puget Sound 2014

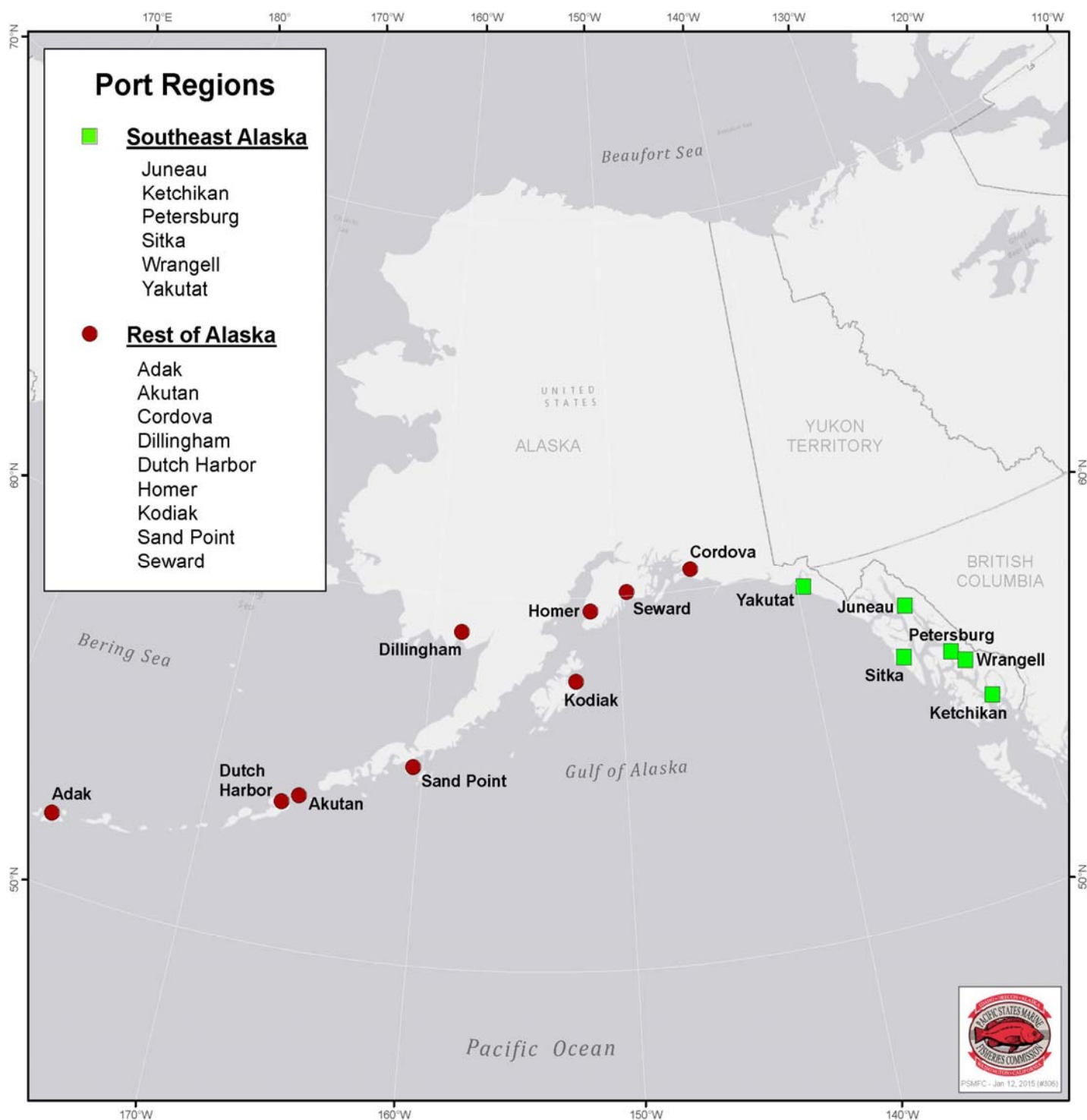
Fuel Docks Added

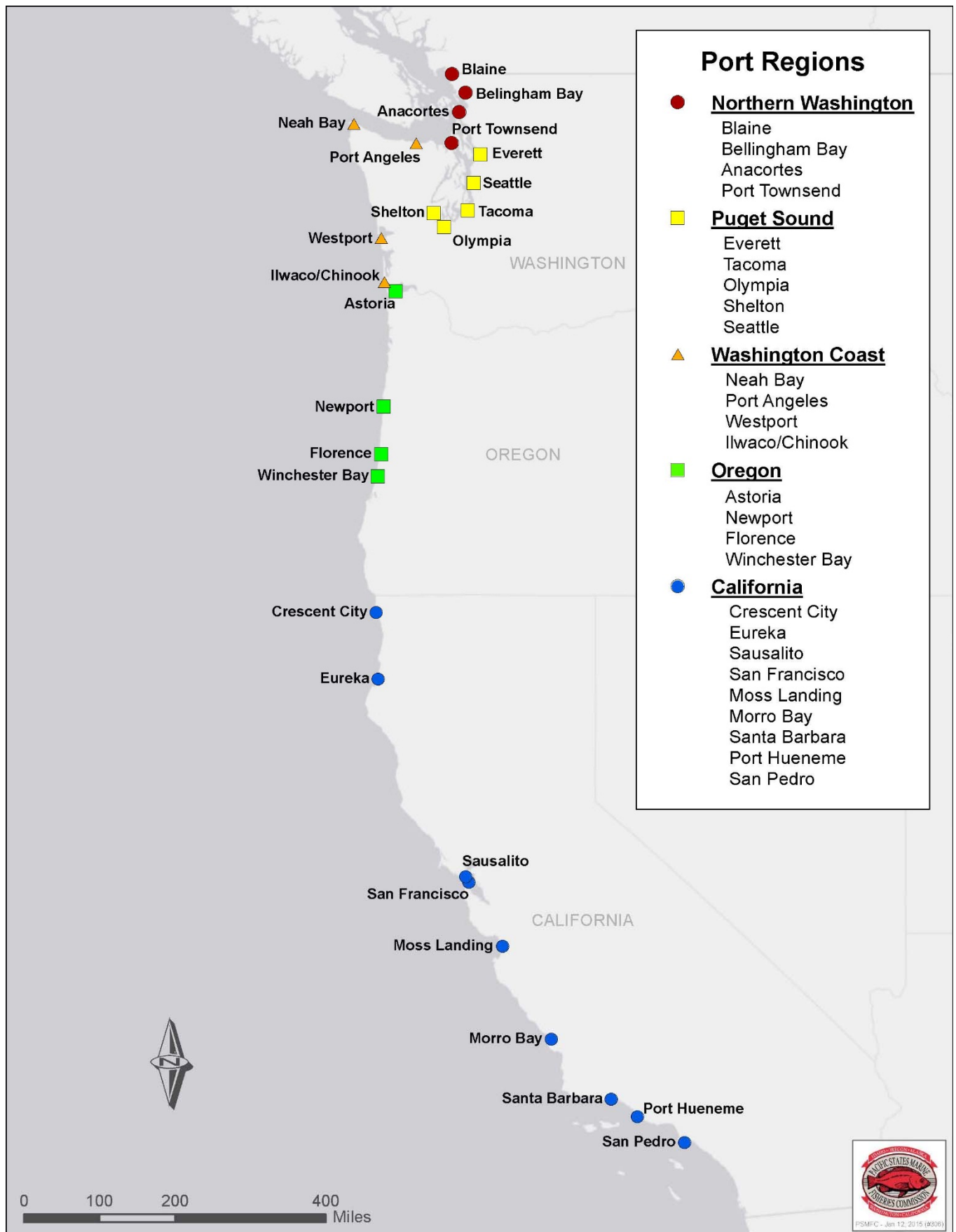
Adak, Dillingham (AK) 2001
Yakutat, Wrangell (AK) 2001
Brookings (OR) 2005
Tacoma, Seattle (WA) Tillamook (OR) 2006
San Francisco (CA) 2013

Fuel Docks Dropped

Terminal Island, Monterey Bay (CA) Willapa Bay (WA) 1999
Coos Bay (OR) 2000
Princeton (CA) Port Orford, Brookings (OR) 2001
St. Paul Island (AK) 2002
Morro Bay, (CA) Astoria, Depot Bay (OR) 2003
Bodega Bay (CA) 2008 Brookings (OR) 2009
Fort Brag (CA) 2011 Gold Beach (OR) 2012
Tacoma (WA) 2013
Tillamook/Garibaldi (OR) 2014
Blaine (WA) & San Pedro (CA) 2016, Santa Barbara (CA) 2017
Port Townsend (WA) 2018

* Revenue generation figures are based on revenue data associated with all species from PacFIN on 30 Dec 98.





Fuel Suppliers

At least one fuel supplier in each selected port was surveyed. Its “Fuel Dock Identifier” uniquely identifies each fuel supplier. This identifier was formed by using the three-letter Pacific Fisheries Information Network and Alaska Fisheries Information Network’s (PacFIN/AKFIN) port code for the location of the fuel supplier followed by a sequential number. For example, KTN2 identifies the second fuel supplier surveyed in Ketchikan, AK and SEA4 identifies the fourth fuel supplier surveyed in Seattle, WA. A fuel supplier’s identifier will remain unique to that dock throughout the collection of this data to allow a single dock to be identified over time.

Fuel suppliers were selected on the following basis:

1. If a fuel supplier was included in NMFS SW Region's fuel price collection and the dock's phone number is still operational.
2. If a fuel supplier was listed in the "Port Guide" appearing in the 1998 National Fisherman's Journal Pilothouse Guide and Yellow Pages.
3. If a fuel supplier was not located through the "Port Guide" method for a given port, the US West Dex Internet Yellow Pages and/or the Marine Yellow Pages was used to locate a fuel supplier at that port.
4. In some cases, the Port Office is called in lieu of a fuel supplier. Some suppliers were added to increase coverage in certain areas as their contact information became available.

Data Collection

Date of Collection

Fuel prices are collected the first Tuesday of each month, given the following contingencies:

- If the first Tuesday of a month is a holiday, prices are collected the following Thursday. For instance, July 4, 2000 was a Tuesday. Price data for July 2000 was collected on Thursday, July 6, 2000. The date the data is collected is stored with the data.
- If the fuel supplier being surveyed does not answer their phone on the first Tuesday of the month, the person surveying the fuel suppliers will try to reach the dock in question one more time during that day and three times on the following Thursday (until the dock is reached). If the dock could not be reached during these attempts, a missing value will appear in the data for that dock.
- If there are other circumstances that prevent the person conducting the survey from being able to do so on the first Tuesday of the month, fuel prices will be collected on the next business day.
- A noted exception happened in 2014 when price collection was performed the second week in September.

Price Data Collected

The data to be collected are the before tax (where applicable) cash price for 600 gallons of #2 marine diesel for a commercial fishing vessel.

If the before tax price is not available, (i.e., the fuel supplier cannot/will not provide before tax price) the pre-tax price is calculated when possible and a note is made in the "notes" column.

The price collected at 600 gallons, attempts to account for price-breaks that many fuel suppliers have for purchases above 200-500 gallons. We realize that many fishing vessels purchase thousands of gallons at a time and price breaks are offered for larger purchases, however, the largest and most common breaks occur below 600 gallons.

Data Availability

Fuel price data is available by state and in a combined West Coast/Alaska file. These data are entered and made available on the Economic Fisheries Information Network (EFIN) website in EXCEL and ASCII formats by the second Tuesday of each month.

The link to this data is: <http://www.psmfc.org/efin/data/fuel.html>

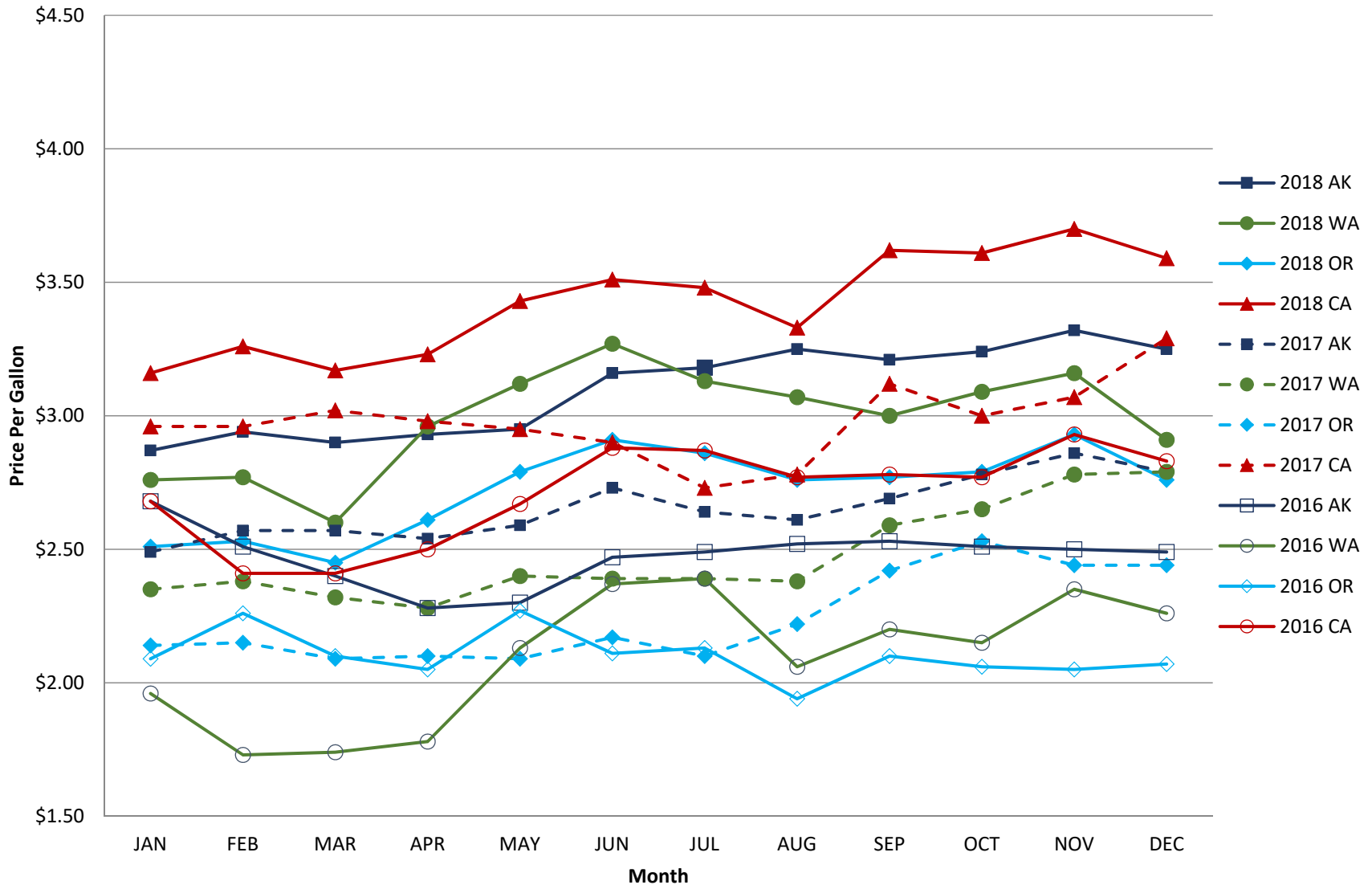
Variable Formats

Marine fuel price data are available in two formats: as an EXCEL file and as an ASCII fixed width file. Each file contains the following variables:

Variable	Type	Width	Variable Title	Data Values/Notes
Year	Numeric	4.0	Year of fuel price collection	
Month	Numeric	2.0	Month of fuel price collection	1=January, 2=February, etc.
Day	Numeric	2.0	Date of fuel price collection	
Port	Character	3	PacFIN/AKFIN port code	
PortName	Character	30	Name of port	
State	Character	2	State in which port is located	2-letter US Postal Service official abbreviation
DockCode	Character	4	Fuel dock identifier	
Pricettl	Dollar	10.2	Total cash price before tax of 600 gallons of #2 marine diesel in current US dollars	Pricettl=\$0.00 indicates that a total price was unavailable for this fuel supplier
Pricegal	Dollar	6.3	Cash price per gallon before tax of 600 gallons of #2 marine diesel in current US dollars	Pricegal=\$0.000 indicates that a total price was unavailable for this fuel supplier
PxQuoted	Numeric	1.0	Quoted Price	0 = No Price Quoted - See Notes 1 = Price per Gallon Quoted 2 = Total Price Quoted 3 = Both Prices Quoted
Notes	Character	51	Any notes related to anomalies, exceptions, caveats, etc, associated with the data in the record	

2016-2018 Data Charts for Alaska, Washington, Oregon and California

2016-2018 State Average Before-Tax Cash Price Based on the Purchase of 600 Gallons of #2 Marine Diesel

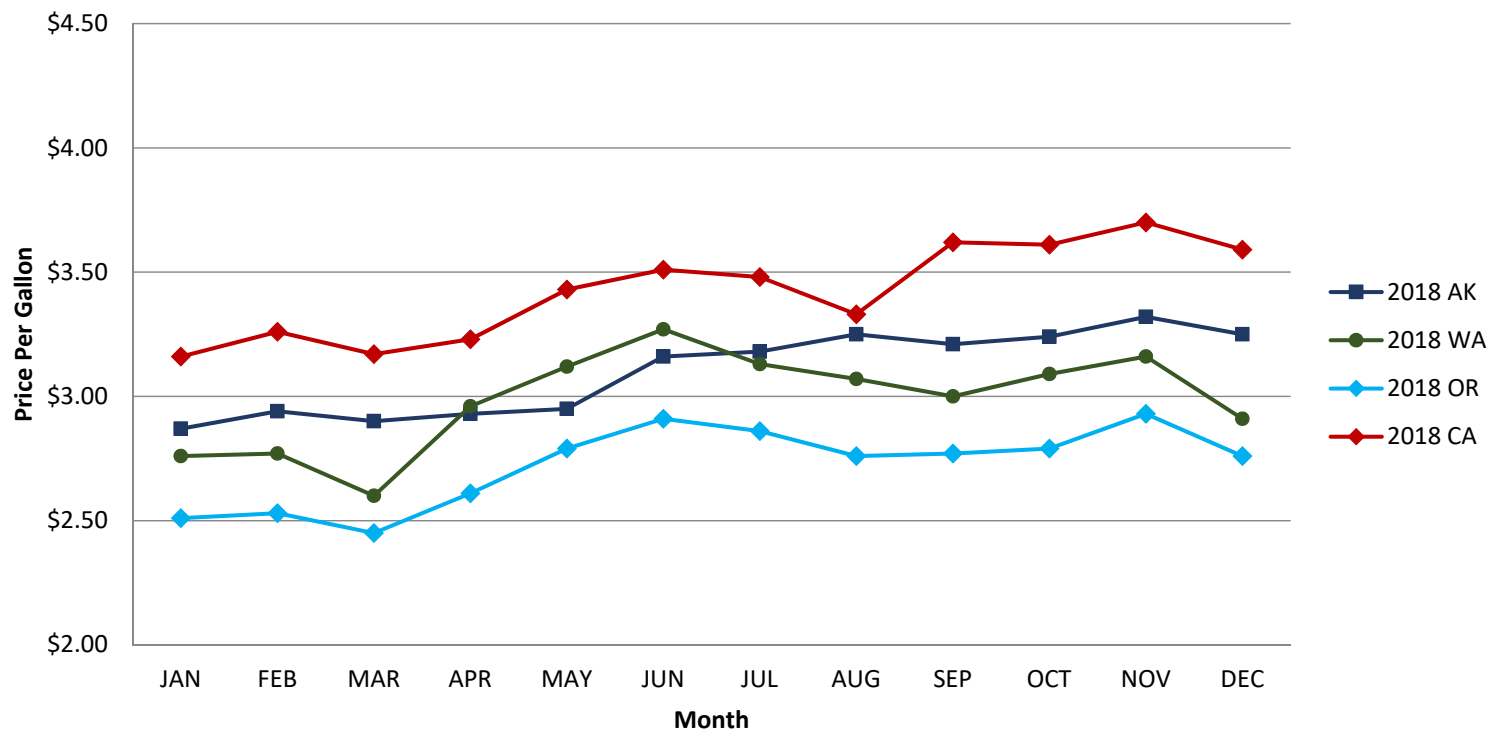


State Level Summary 2016-2018

2018	JAN	FEB	MAR	APR	MAY	JUN	JUL	AUG	SEP	OCT	NOV	DEC
Alaska	\$2.87	\$2.94	\$2.90	\$2.93	\$2.95	\$3.16	\$3.18	\$3.25	\$3.21	\$3.24	\$3.32	\$3.25
Washington	\$2.76	\$2.77	\$2.60	\$2.96	\$3.12	\$3.27	\$3.13	\$3.07	\$3.00	\$3.09	\$3.16	\$2.91
Oregon	\$2.51	\$2.53	\$2.45	\$2.61	\$2.79	\$2.91	\$2.86	\$2.76	\$2.77	\$2.79	\$2.93	\$2.76
California	\$3.16	\$3.26	\$3.17	\$3.23	\$3.43	\$3.51	\$3.48	\$3.33	\$3.62	\$3.61	\$3.70	\$3.59
2017	JAN	FEB	MAR	APR	MAY	JUN	JUL	AUG	SEP	OCT	NOV	DEC
Alaska	\$2.49	\$2.57	\$2.57	\$2.54	\$2.59	\$2.73	\$2.64	\$2.61	\$2.69	\$2.78	\$2.86	\$2.79
Washington	\$2.35	\$2.38	\$2.32	\$2.28	\$2.40	\$2.39	\$2.39	\$2.38	\$2.59	\$2.65	\$2.78	\$2.79
Oregon	\$2.14	\$2.15	\$2.09	\$2.10	\$2.09	\$2.17	\$2.10	\$2.22	\$2.42	\$2.53	\$2.44	\$2.44
California	\$2.96	\$2.96	\$3.02	\$2.98	\$2.95	\$2.90	\$2.73	\$2.78	\$3.12	\$3.00	\$3.07	\$3.29
2016	JAN	FEB	MAR	APR	MAY	JUN	JUL	AUG	SEP	OCT	NOV	DEC
Alaska	\$2.68	\$2.51	\$2.40	\$2.28	\$2.30	\$2.47	\$2.49	\$2.52	\$2.53	\$2.51	\$2.50	\$2.49
Washington	\$1.96	\$1.73	\$1.74	\$1.78	\$2.13	\$2.37	\$2.39	\$2.06	\$2.20	\$2.15	\$2.35	\$2.26
Oregon	\$2.09	\$2.26	\$2.10	\$2.05	\$2.27	\$2.11	\$2.13	\$1.94	\$2.10	\$2.06	\$2.05	\$2.07
California	\$2.68	\$2.41	\$2.41	\$2.50	\$2.67	\$2.88	\$2.87	\$2.77	\$2.78	\$2.77	\$2.93	\$2.83

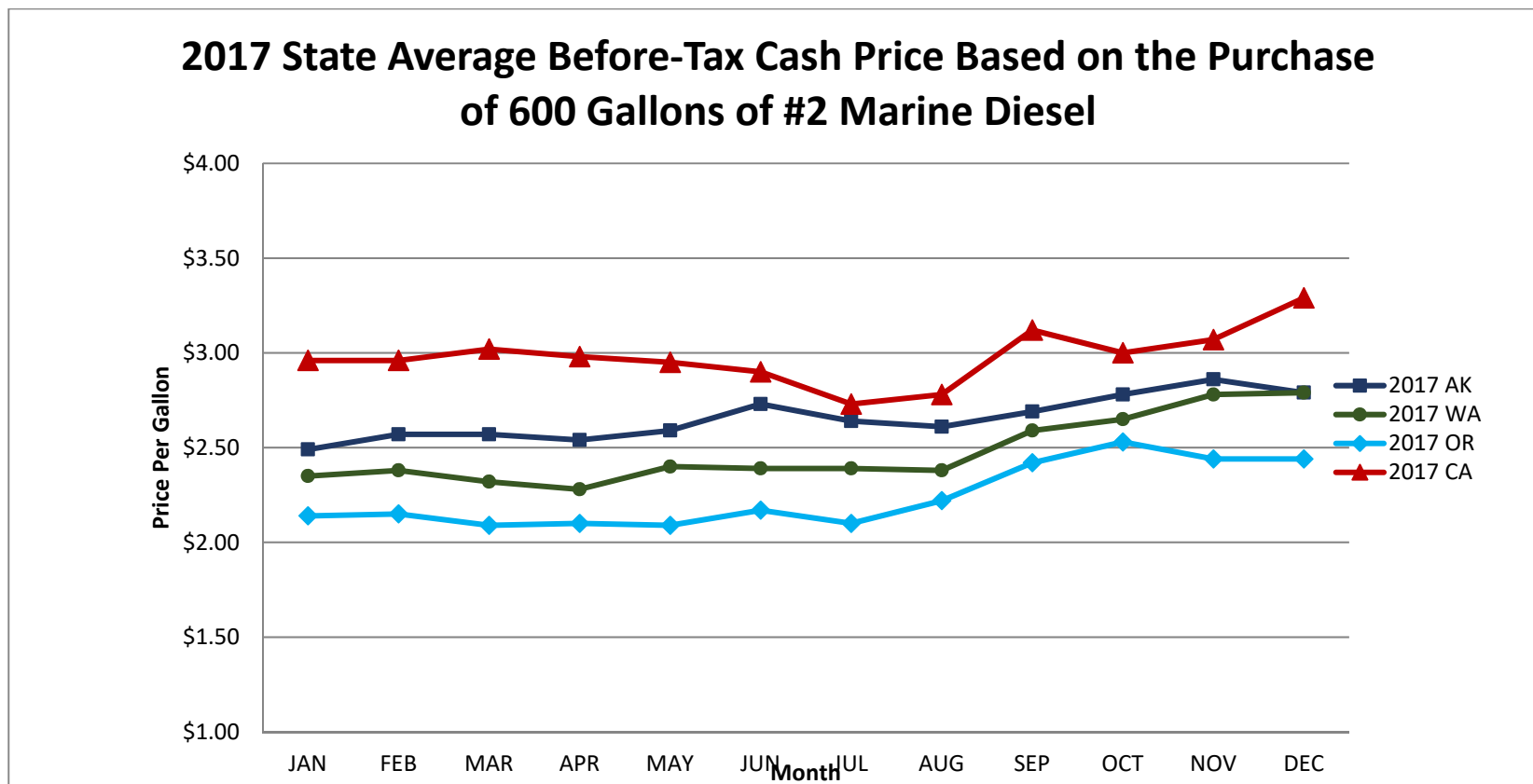
2018 West Coast Fuel Prices State-Level Summaries

2018 State Average Before-Tax Cash Price Based on the Purchase of 600 Gallons of #2 Marine Diesel



2018	JAN	FEB	MAR	APR	MAY	JUN	JUL	AUG	SEP	OCT	NOV	DEC
Alaska	\$2.87	\$2.94	\$2.90	\$2.93	\$2.95	\$3.16	\$3.18	\$3.25	\$3.21	\$3.24	\$3.32	\$3.25
Washington	\$2.76	\$2.77	\$2.60	\$2.96	\$3.12	\$3.27	\$3.13	\$3.07	\$3.00	\$3.09	\$3.16	\$2.91
Oregon	\$2.51	\$2.53	\$2.45	\$2.61	\$2.79	\$2.91	\$2.86	\$2.76	\$2.77	\$2.79	\$2.93	\$2.76
California	\$3.16	\$3.26	\$3.17	\$3.23	\$3.43	\$3.51	\$3.48	\$3.33	\$3.62	\$3.61	\$3.70	\$3.59

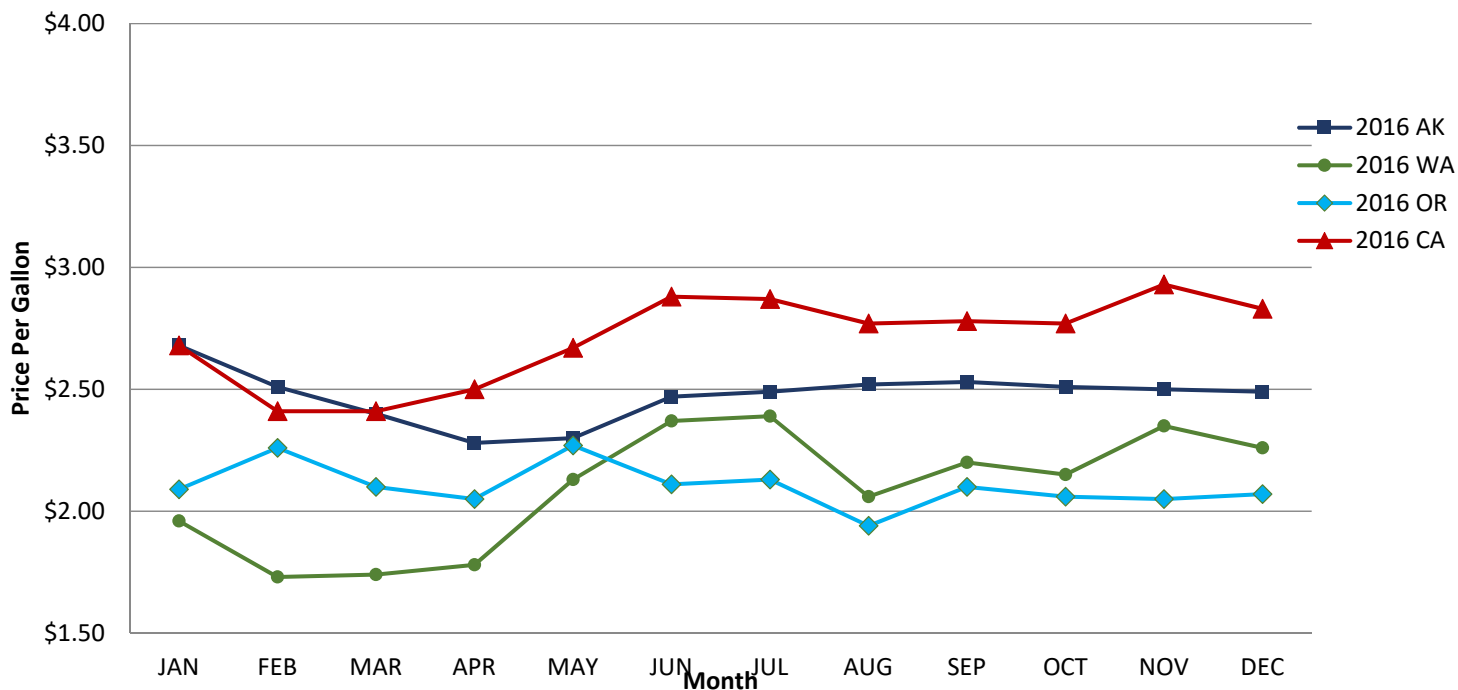
2017 West Coast Fuel Prices State-Level Summaries



2017	JAN	FEB	MAR	APR	MAY	JUN	JUL	AUG	SEP	OCT	NOV	DEC
Alaska	\$2.49	\$2.57	\$2.57	\$2.54	\$2.59	\$2.73	\$2.64	\$2.61	\$2.69	\$2.78	\$2.86	\$2.79
Washington	\$2.35	\$2.38	\$2.32	\$2.28	\$2.40	\$2.39	\$2.39	\$2.38	\$2.59	\$2.65	\$2.78	\$2.79
Oregon	\$2.14	\$2.15	\$2.09	\$2.10	\$2.09	\$2.17	\$2.10	\$2.22	\$2.42	\$2.53	\$2.44	\$2.44
California	\$2.96	\$2.96	\$3.02	\$2.98	\$2.95	\$2.90	\$2.73	\$2.78	\$3.12	\$3.00	\$3.07	\$3.29

2016 West Coast Fuel Prices State-Level Summaries

2016 State Average Before-Tax Cash Price Based on the Purchase of 600 Gallons of #2 Marine Diesel



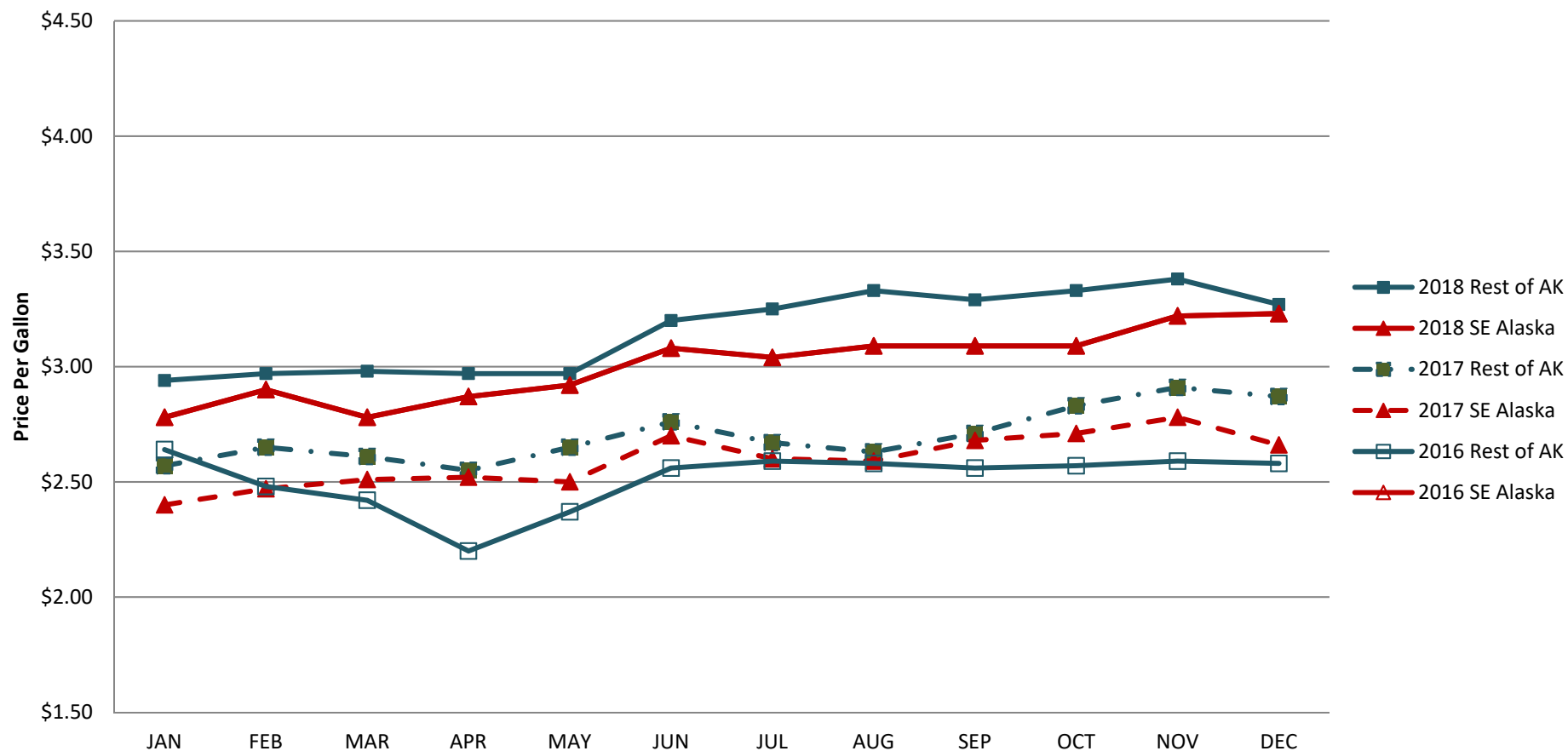
2016	JAN	FEB	MAR	APR	MAY	JUN	JUL	AUG	SEP	OCT	NOV	DEC
Alaska	\$2.68	\$2.51	\$2.40	\$2.28	\$2.30	\$2.47	\$2.49	\$2.52	\$2.53	\$2.51	\$2.50	\$2.49
Washington	\$1.96	\$1.73	\$1.74	\$1.78	\$2.13	\$2.37	\$2.39	\$2.06	\$2.20	\$2.15	\$2.35	\$2.26
Oregon	\$2.09	\$2.26	\$2.10	\$2.05	\$2.27	\$2.11	\$2.13	\$1.94	\$2.10	\$2.06	\$2.05	\$2.07
California	\$2.68	\$2.41	\$2.41	\$2.50	\$2.67	\$2.88	\$2.87	\$2.77	\$2.78	\$2.77	\$2.93	\$2.83

Pacific States Marine Fisheries Commission Economic Fisheries Information Network

<http://www.psmfc.org/efin/docs/2018FuelPriceReport.pdf> January 2019

2016-2018 Regional-Level Summary for Alaska

2016 - 2018 Alaska Fuel Prices State-Level Summaries **Average Before-Tax Cash Price Based on the Purchase of 600 Gallons of #2** **Marine Diesel**



The Rest of Alaska

Adak
 Akutan
 Cordova
 Dillingham
 Dutch Harbor
 Homer
 Kodiak
 Sand Point
 Seward

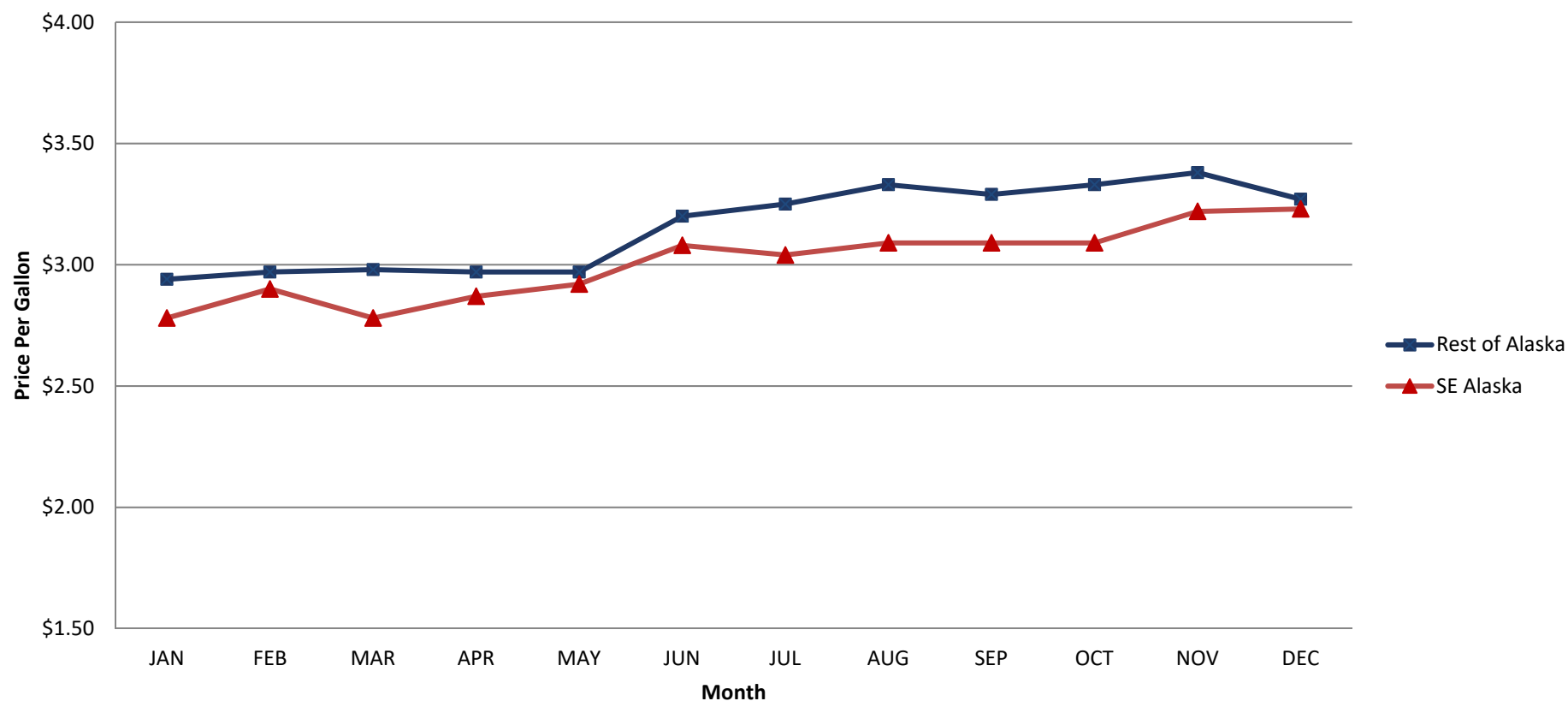
Southeast Alaska

Juneau
 Ketchikan
 Petersburg
 Sitka
 Wrangell
 Yakutat

2018	JAN	FEB	MAR	APR	MAY	JUN	JUL	AUG	SEP	OCT	NOV	DEC
Rest of Alaska	\$2.94	\$2.97	\$2.98	\$2.97	\$2.97	\$3.20	\$3.25	\$3.33	\$3.29	\$3.33	\$3.38	\$3.27
SE Alaska	\$2.78	\$2.90	\$2.78	\$2.87	\$2.92	\$3.08	\$3.04	\$3.09	\$3.09	\$3.09	\$3.22	\$3.23
2017	JAN	FEB	MAR	APR	MAY	JUN	JUL	AUG	SEP	OCT	NOV	DEC
Rest of Alaska	\$2.57	\$2.65	\$2.61	\$2.55	\$2.65	\$2.76	\$2.67	\$2.63	\$2.71	\$2.83	\$2.91	\$2.87
SE Alaska	\$2.40	\$2.47	\$2.51	\$2.52	\$2.50	\$2.70	\$2.60	\$2.59	\$2.68	\$2.71	\$2.78	\$2.66
2016	JAN	FEB	MAR	APR	MAY	JUN	JUL	AUG	SEP	OCT	NOV	DEC
Rest of Alaska	\$2.64	\$2.48	\$2.42	\$2.20	\$2.37	\$2.56	\$2.59	\$2.58	\$2.56	\$2.57	\$2.59	\$2.58
Southeast Alaska	\$2.78	\$2.90	\$2.78	\$2.87	\$2.92	\$3.08	\$3.04	\$3.09	\$3.09	\$3.09	\$3.22	\$3.23

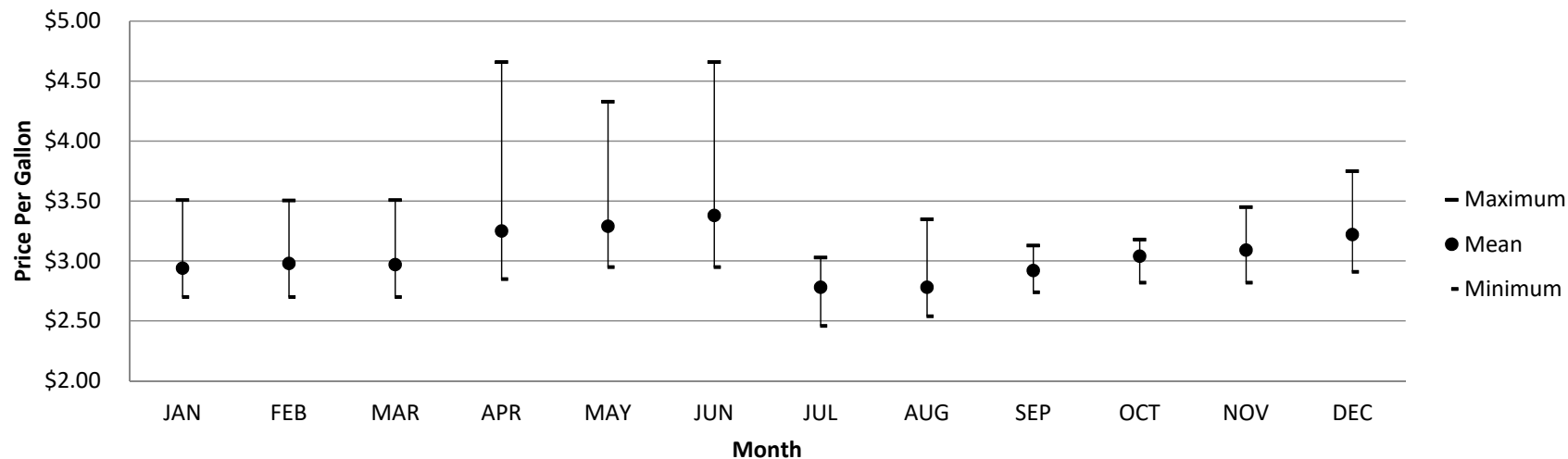
2018 Alaska Fuel Prices State-Level Summaries

Average Before-Tax Cash Price Based on the Purchase of 600 Gallons of #2 Marine Diesel



2018 Rest of Alaska

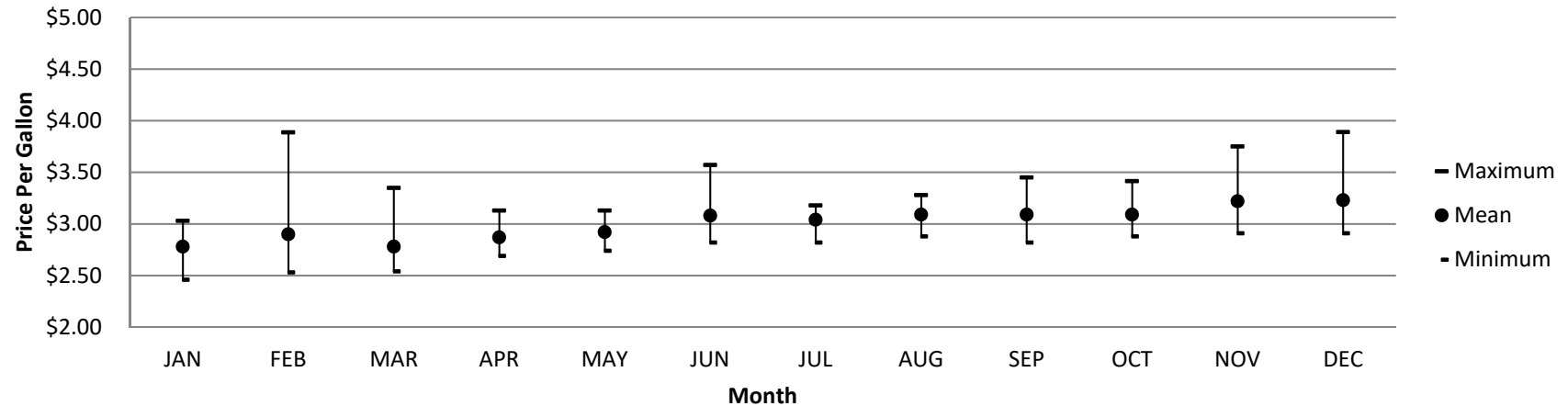
2018 Rest of Alaska Monthly Maximum, Mean, Minimum Before-Tax Cash Price Based on the Purchase of 600 Gallons of #2 Marine Diesel



Month	Maximum	Mean	Minimum	Standard Deviation	Number of Fuel Suppliers Responding
JAN	\$3.51	\$2.94	\$2.70	\$0.22	11
FEB	\$3.51	\$2.98	\$2.70	\$0.25	10
MAR	\$3.51	\$2.97	\$2.70	\$0.27	12
APR	\$4.66	\$3.25	\$2.85	\$0.50	11
MAY	\$4.33	\$3.29	\$2.95	\$0.39	11
JUN	\$4.66	\$3.38	\$2.95	\$0.48	10
JUL	\$3.03	\$2.78	\$2.46	\$0.21	8
AUG	\$3.35	\$2.78	\$2.54	\$0.28	7
SEP	\$3.13	\$2.92	\$2.74	\$0.15	7
OCT	\$3.18	\$3.04	\$2.82	\$0.15	6
NOV	\$3.45	\$3.09	\$2.82	\$0.20	7
DEC	\$3.75	\$3.22	\$2.91	\$0.32	6

2018 Southeast Alaska

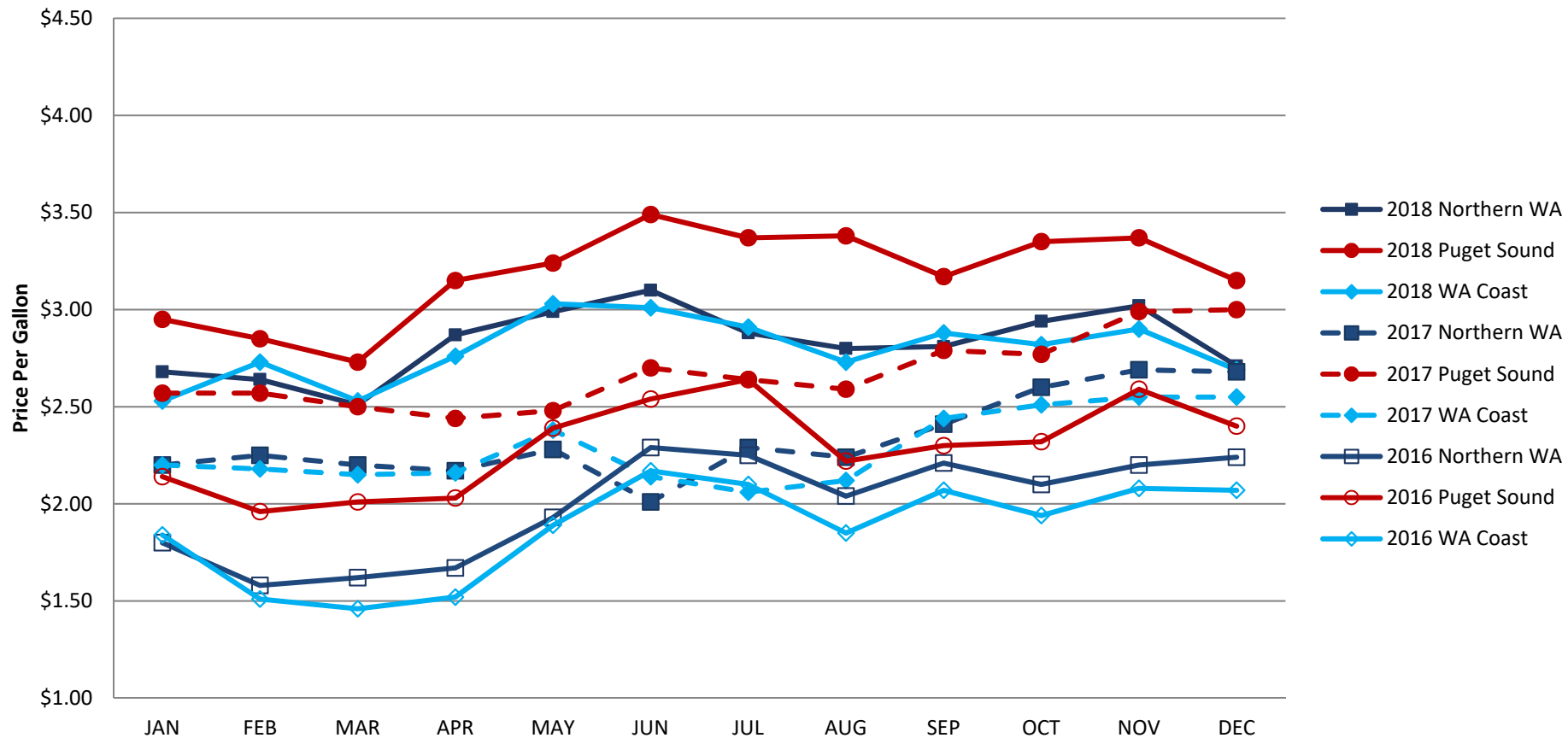
2018 Southeast Alaska Monthly Maximum, Mean, Minimum Before-Tax Cash Price Based on the Purchase of 600 Gallons of #2 Marine Diesel



Month	Maximum	Mean	Minimum	Standard Deviation	Number of Fuel Suppliers Responding
JAN	\$3.03	\$2.78	\$2.46	\$0.21	8
FEB	\$3.89	\$2.90	\$2.53	\$0.43	8
MAR	\$3.35	\$2.78	\$2.54	\$0.28	7
APR	\$3.13	\$2.87	\$2.69	\$0.17	5
MAY	\$3.13	\$2.92	\$2.74	\$0.15	7
JUN	\$3.57	\$3.08	\$2.82	\$0.24	7
JUL	\$3.18	\$3.04	\$2.82	\$0.15	6
AUG	\$3.28	\$3.09	\$2.88	\$0.15	6
SEP	\$3.45	\$3.09	\$2.82	\$0.20	7
OCT	\$3.42	\$3.09	\$2.88	\$0.20	6
NOV	\$3.75	\$3.22	\$2.91	\$0.32	6
DEC	\$3.89	\$3.23	\$2.91	\$0.32	7

2016-2018 Regional-Level Summary for Washington

2016 - 2018 Washington Fuel Prices State-Level Summaries **Average Before-Tax Cash Price Based on the Purchase of 600 Gallons of #2** **Marine Diesel**



Regional-Level Summary for Washington

Northern Washington

Anacortes
Bellingham Bay
Port Townsend

Puget Sound

Everett
Olympia
Seattle
Shelton

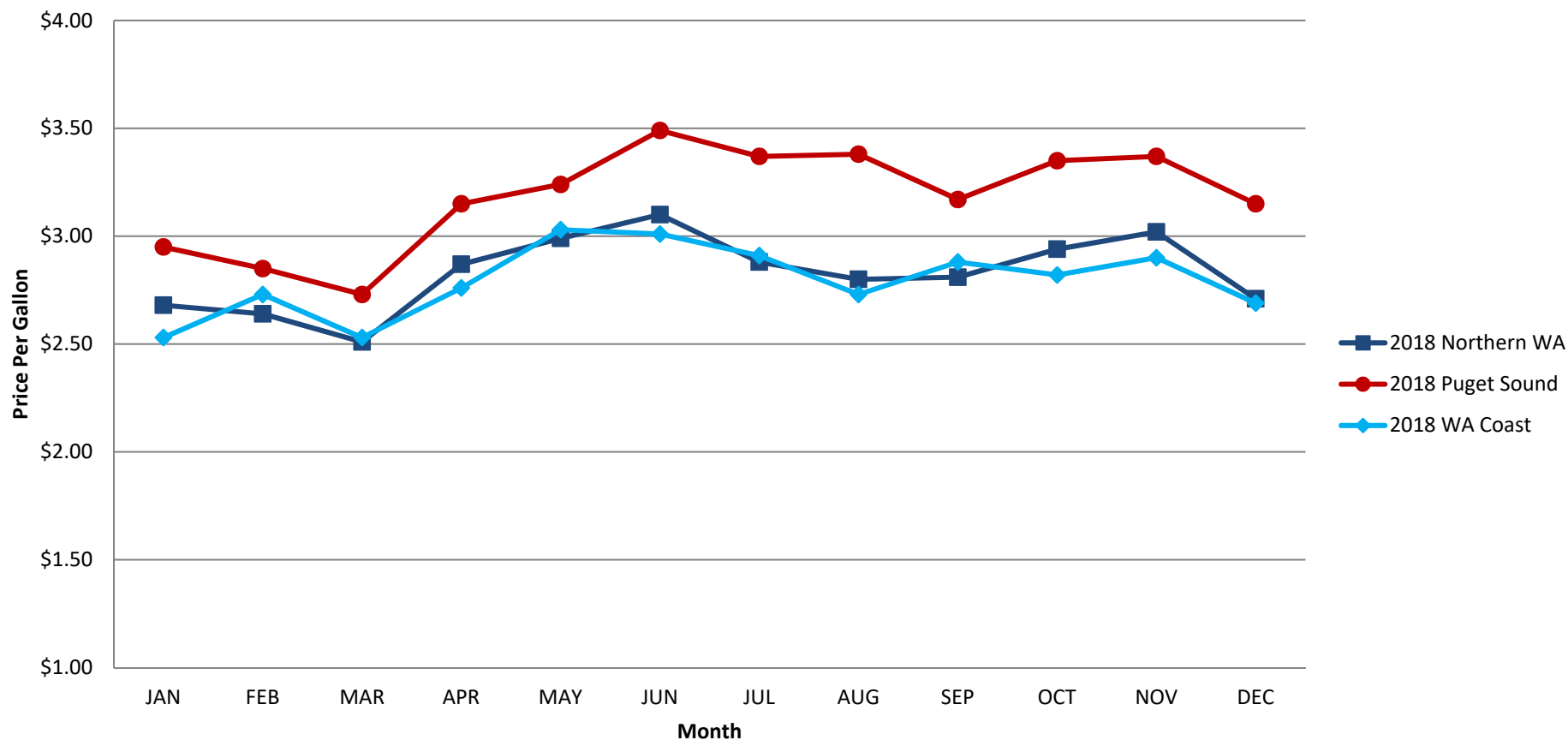
Washington Coast

Ilwaco/Chinook
Neah Bay
Port Angeles
Westport

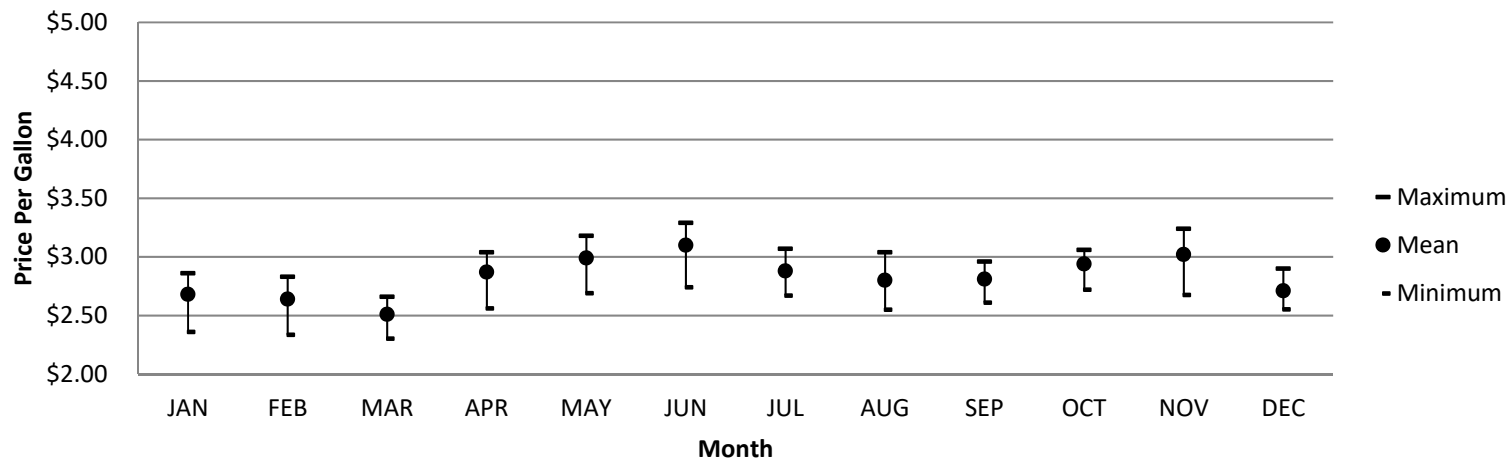
2018	JAN	FEB	MAR	APR	MAY	JUN	JUL	AUG	SEP	OCT	NOV	DEC
Northern Washington	\$2.68	\$2.64	\$2.51	\$2.87	\$2.99	\$3.10	\$2.88	\$2.80	\$2.81	\$2.94	\$3.02	\$2.71
Puget Sound	\$2.95	\$2.85	\$2.73	\$3.15	\$3.24	\$3.49	\$3.37	\$3.38	\$3.17	\$3.35	\$3.37	\$3.15
Washington Coast	\$2.53	\$2.73	\$2.53	\$2.76	\$3.03	\$3.01	\$2.91	\$2.73	\$2.88	\$2.82	\$2.90	\$2.69
2017	JAN	FEB	MAR	APR	MAY	JUN	JUL	AUG	SEP	OCT	NOV	DEC
Northern Washington	\$2.20	\$2.25	\$2.20	\$2.17	\$2.28	\$2.01	\$2.29	\$2.24	\$2.41	\$2.60	\$2.69	\$2.68
Puget Sound	\$2.57	\$2.57	\$2.50	\$2.44	\$2.48	\$2.70	\$2.64	\$2.59	\$2.79	\$2.77	\$2.99	\$3.00
Washington Coast	\$2.20	\$2.18	\$2.15	\$2.16	\$2.38	\$2.14	\$2.06	\$2.12	\$2.44	\$2.51	\$2.55	\$2.55
2016	JAN	FEB	MAR	APR	MAY	JUN	JUL	AUG	SEP	OCT	NOV	DEC
Northern Washington	\$1.80	\$1.58	\$1.62	\$1.67	\$1.93	\$2.29	\$2.25	\$2.04	\$2.21	\$2.10	\$2.20	\$2.24
Puget Sound	\$2.14	\$1.96	\$2.01	\$2.03	\$2.39	\$2.54	\$2.64	\$2.22	\$2.30	\$2.32	\$2.59	\$2.40
Washington Coast	\$1.84	\$1.51	\$1.46	\$1.52	\$1.89	\$2.17	\$2.10	\$1.85	\$2.07	\$1.94	\$2.08	\$2.07

2018 Washington Fuel Prices State-Level Summaries

Average Before-Tax Cash Price Based on the Purchase of 600 Gallons of #2 Marine Diesel



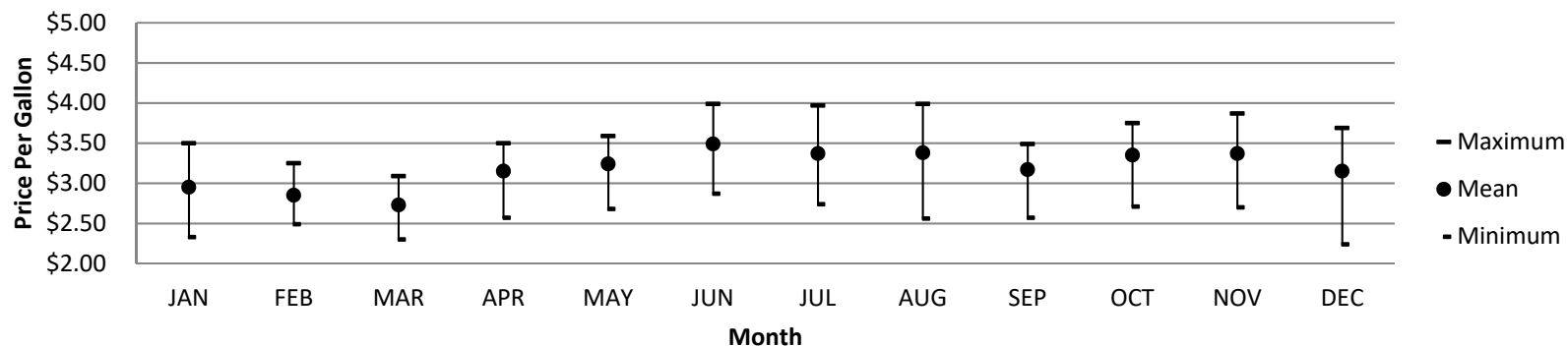
2018 Northern Washington Monthly Maximum, Mean, Minimum Before-Tax Cash Price Based on the Purchase of 600 Gallons of #2 Marine Diesel



Month	Maximum	Mean	Minimum	Standard Deviation	Number of Fuel Suppliers Responding
JAN	\$2.86	\$ 2.68	\$2.36	\$ 0.28	3
FEB	\$2.83	\$ 2.64	\$2.34	\$ 0.26	3
MAR	\$2.66	\$ 2.51	\$2.30	\$ 0.19	3
APR	\$3.04	\$ 2.87	\$2.56	\$ 0.22	4
MAY	\$3.18	\$ 2.99	\$2.69	\$ 0.26	3
JUN	\$3.29	\$ 3.10	\$2.74	\$ 0.31	3
JUL	\$3.07	\$ 2.88	\$2.67	\$ 0.20	3
AUG	\$3.04	\$ 2.80	\$2.55	\$ 0.25	3
SEP	\$2.96	\$ 2.81	\$2.61	\$ 0.18	3
OCT	\$3.06	\$ 2.94	\$2.72	\$ 0.19	3
NOV	\$3.24	\$ 3.02	\$2.68	\$ 0.30	3
DEC	\$2.90	\$ 2.71	\$2.55	\$ 0.18	3

2018 Puget Sound

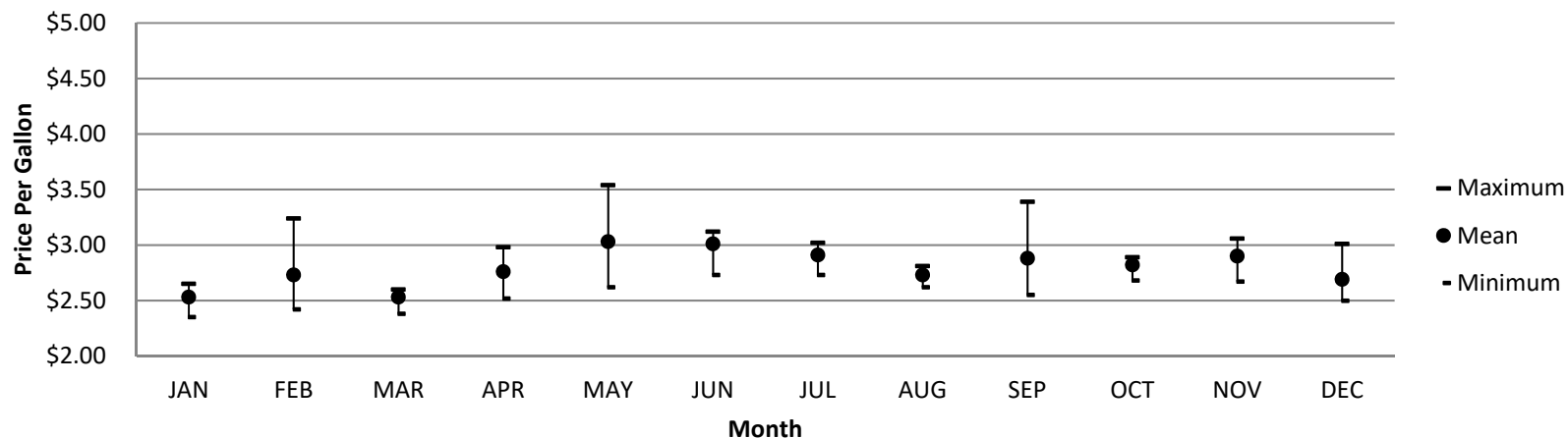
2018 Puget Sound Monthly Maximum, Mean, Minimum Before-Tax Cash Price Based on the Purchase of 600 Gallons of #2 Marine Diesel



Month	Maximum	Mean	Minimum	Standard Deviation	Number of Fuel Suppliers Responding
JAN	\$3.50	\$ 2.95	\$2.33	\$ 0.45	6
FEB	\$3.25	\$ 2.85	\$2.49	\$ 0.37	6
MAR	\$3.09	\$ 2.73	\$2.30	\$ 0.41	4
APR	\$3.50	\$ 3.15	\$2.57	\$ 0.39	6
MAY	\$3.59	\$ 3.24	\$2.68	\$ 0.41	6
JUN	\$3.99	\$ 3.49	\$2.87	\$ 0.43	7
JUL	\$3.97	\$ 3.37	\$2.74	\$ 0.46	7
AUG	\$3.99	\$ 3.38	\$2.56	\$ 0.55	7
SEP	\$3.49	\$ 3.17	\$2.57	\$ 0.41	6
OCT	\$3.75	\$ 3.35	\$2.71	\$ 0.44	6
NOV	\$3.87	\$ 3.37	\$2.70	\$ 0.52	6
DEC	\$3.69	\$ 3.15	\$2.24	\$ 0.68	6

2018 Washington Coast

2018 Washington Coast Monthly Maximum, Mean, Minimum Before-Tax Cash Price Based on the Purchase of 600 Gallons of #2 Marine Diesel

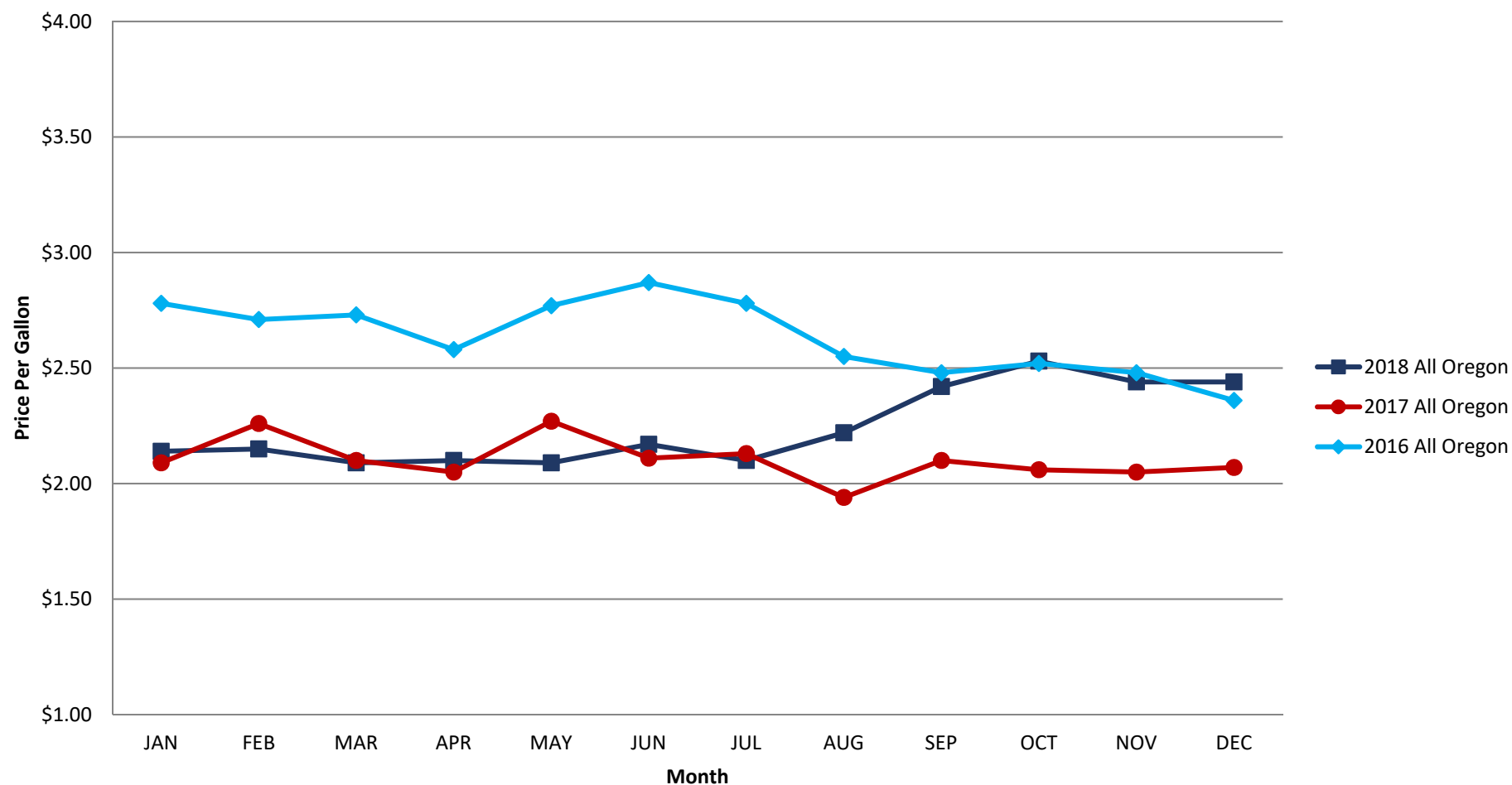


Month	Maximum	Mean	Minimum	Standard Deviation	Number of Fuel Suppliers Responding
JAN	\$2.65	\$ 2.53	\$2.35	\$ 0.13	4
FEB	\$3.24	\$ 2.73	\$2.42	\$ 0.35	4
MAR	\$2.60	\$ 2.53	\$2.38	\$ 0.11	4
APR	\$2.98	\$ 2.76	\$2.52	\$ 0.19	4
MAY	\$3.54	\$ 3.03	\$2.62	\$ 0.47	3
JUN	\$3.12	\$ 3.01	\$2.73	\$ 0.18	4
JUL	\$3.02	\$ 2.91	\$2.73	\$ 0.14	4
AUG	\$2.81	\$ 2.73	\$2.62	\$ 0.09	4
SEP	\$3.39	\$ 2.88	\$2.55	\$ 0.36	4
OCT	\$2.89	\$ 2.82	\$2.68	\$ 0.09	4
NOV	\$3.06	\$ 2.90	\$2.67	\$ 0.21	3
DEC	\$3.01	\$ 2.69	\$2.50	\$ 0.24	4

2016-2018 Regional-Level Summary for Oregon

2016 - 2018 Oregon Fuel Prices State-Level Summaries

Average Before-Tax Cash Price Based on the Purchase of 600 Gallons of #2 Marine Diesel



Regional-Level Summary for Oregon

The ports in Oregon are grouped into one region:

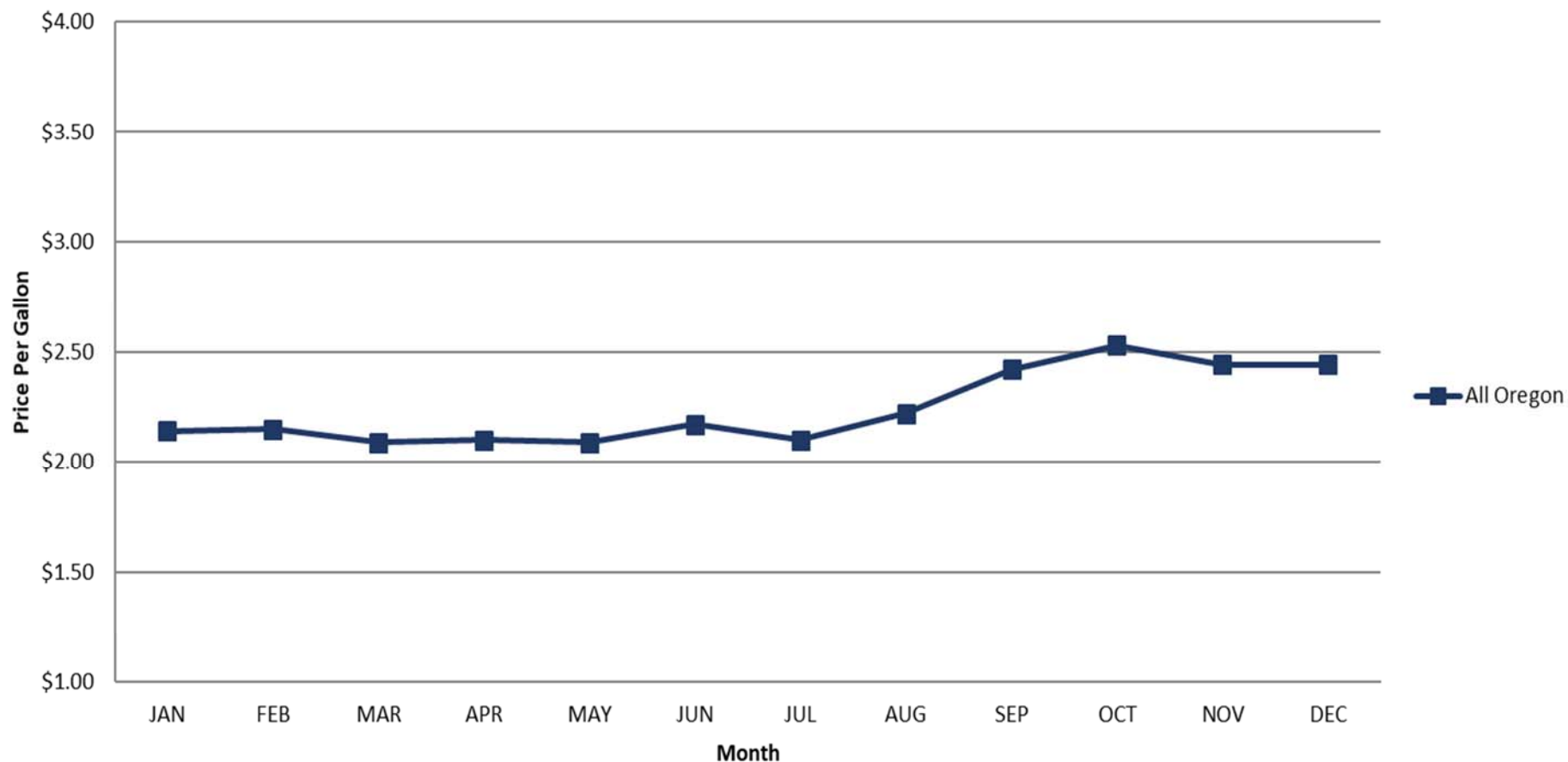
All Oregon

Astoria
Newport
Florence
Winchester Bay

2018	JAN	FEB	MAR	APR	MAY	JUN	JUL	AUG	SEP	OCT	NOV	DEC
All Oregon	\$2.51	\$2.53	\$2.45	\$2.61	\$2.79	\$2.91	\$2.86	\$2.76	\$2.77	\$2.79	\$2.93	\$2.76
2017	JAN	FEB	MAR	APR	MAY	JUN	JUL	AUG	SEP	OCT	NOV	DEC
All Oregon	\$2.14	\$2.15	\$2.09	\$2.10	\$2.09	\$2.17	\$2.10	\$2.22	\$2.42	\$2.53	\$2.44	\$2.44
2016	JAN	FEB	MAR	APR	MAY	JUN	JUL	AUG	SEP	OCT	NOV	DEC
All Oregon	\$2.09	\$2.26	\$2.10	\$2.05	\$2.27	\$2.11	\$2.13	\$1.94	\$2.10	\$2.06	\$2.05	\$2.07

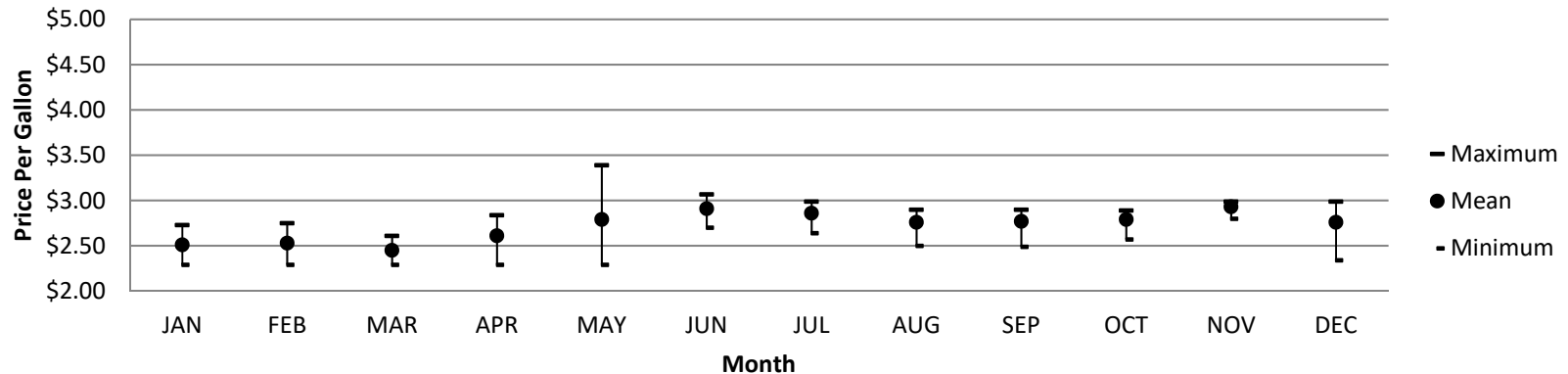
2018 Oregon Fuel Prices State-Level Summaries

Average Before-Tax Cash Price Based on the Purchase of 600 Gallons of #2 Marine Diesel



2018 All Oregon

2018 All Oregon Monthly Maximum, Mean, Minimum Before-Tax Cash Price Based on the Purchase of 600 Gallons of #2 Marine Diesel

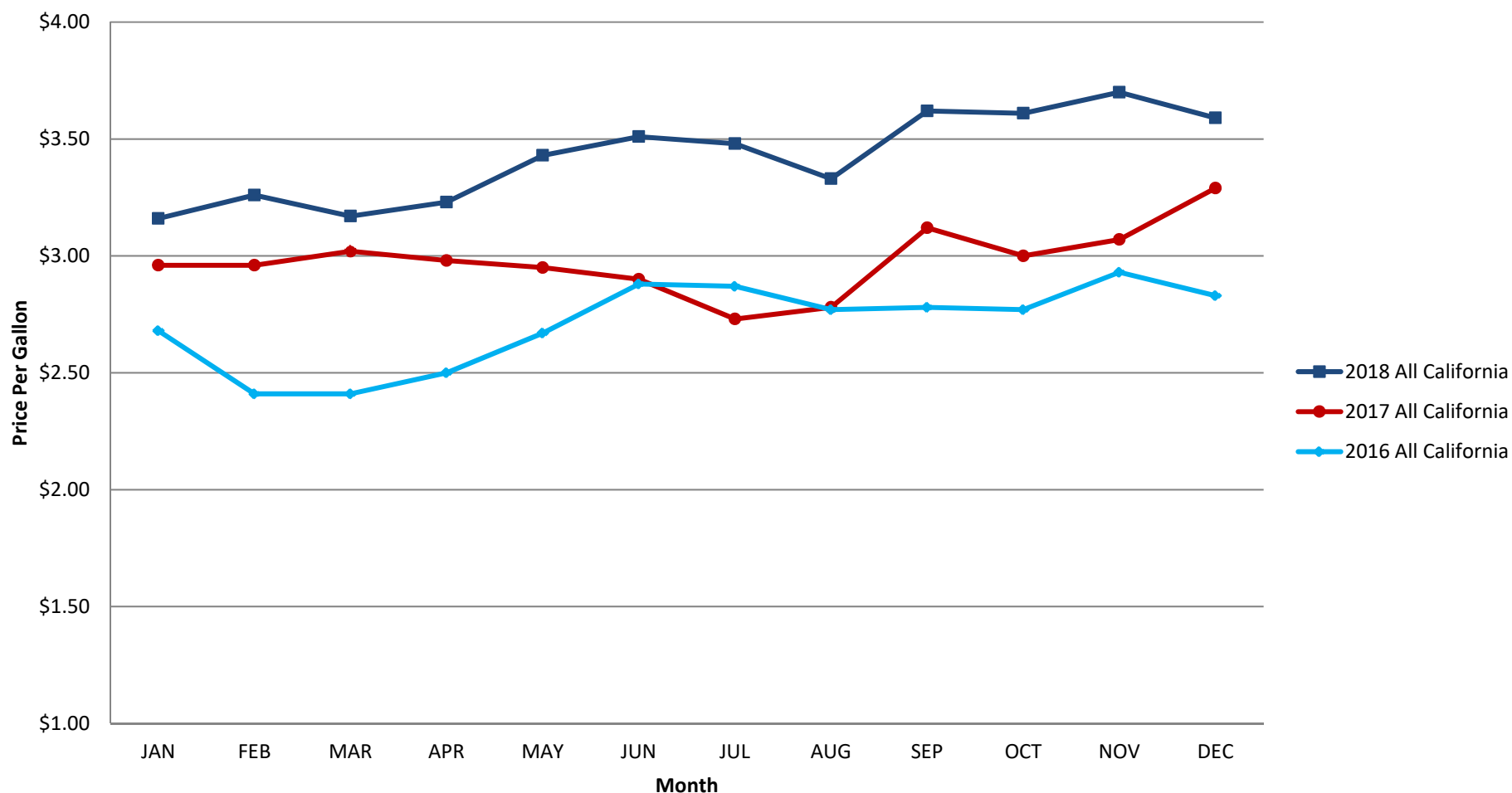


Month	Maximum	Mean	Minimum	Standard Deviation	Number of Fuel Suppliers Responding
JAN	\$2.73	\$2.51	\$2.29	\$0.23	4
FEB	\$2.75	\$2.53	\$2.29	\$0.22	4
MAR	\$2.61	\$2.45	\$2.29	\$0.18	4
APR	\$2.84	\$2.61	\$2.29	\$0.24	5
MAY	\$3.39	\$2.79	\$2.29	\$0.41	5
JUN	\$3.07	\$2.91	\$2.70	\$0.16	5
JUL	\$2.99	\$2.86	\$2.64	\$0.14	5
AUG	\$2.90	\$2.76	\$2.50	\$0.15	5
SEP	\$2.90	\$2.77	\$2.49	\$0.16	5
OCT	\$2.89	\$2.79	\$2.57	\$0.13	5
NOV	\$2.99	\$2.93	\$2.80	\$0.11	3
DEC	\$2.99	\$2.76	\$2.34	\$0.29	4

2016-2018 Regional-Level Summary for California

2016 - 2018 California Fuel Prices State-Level Summaries

Average Before-Tax Cash Price Based on the Purchase of 600 Gallons of #2 Marine Diesel



2018 All California

The ports in California are grouped into one region:

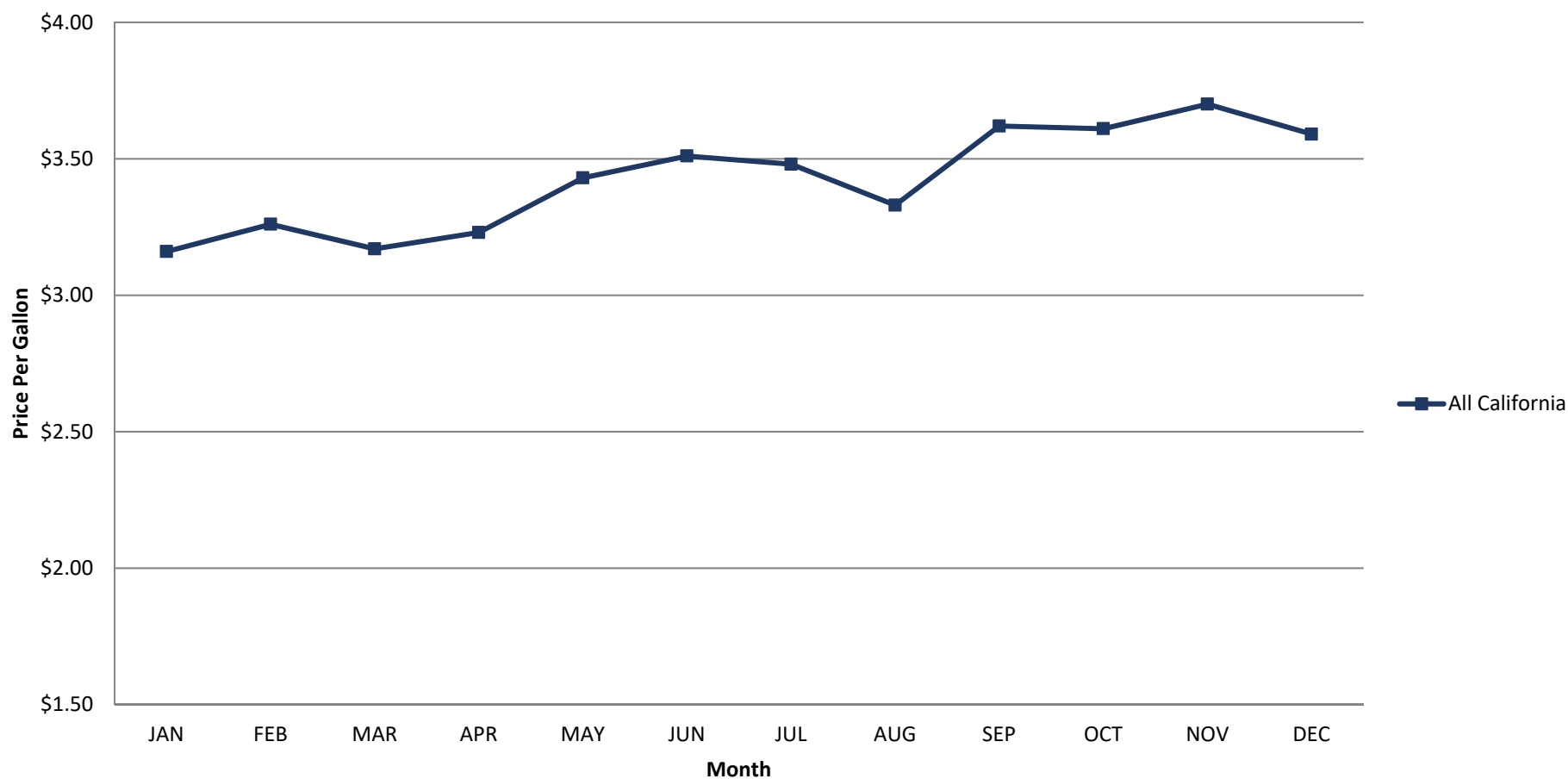
All California

Bodega Bay
Crescent City
Eureka
Morro Bay
Moss Landing
Port Hueneme
San Francisco
San Pedro
Santa Barbara
Sausalito

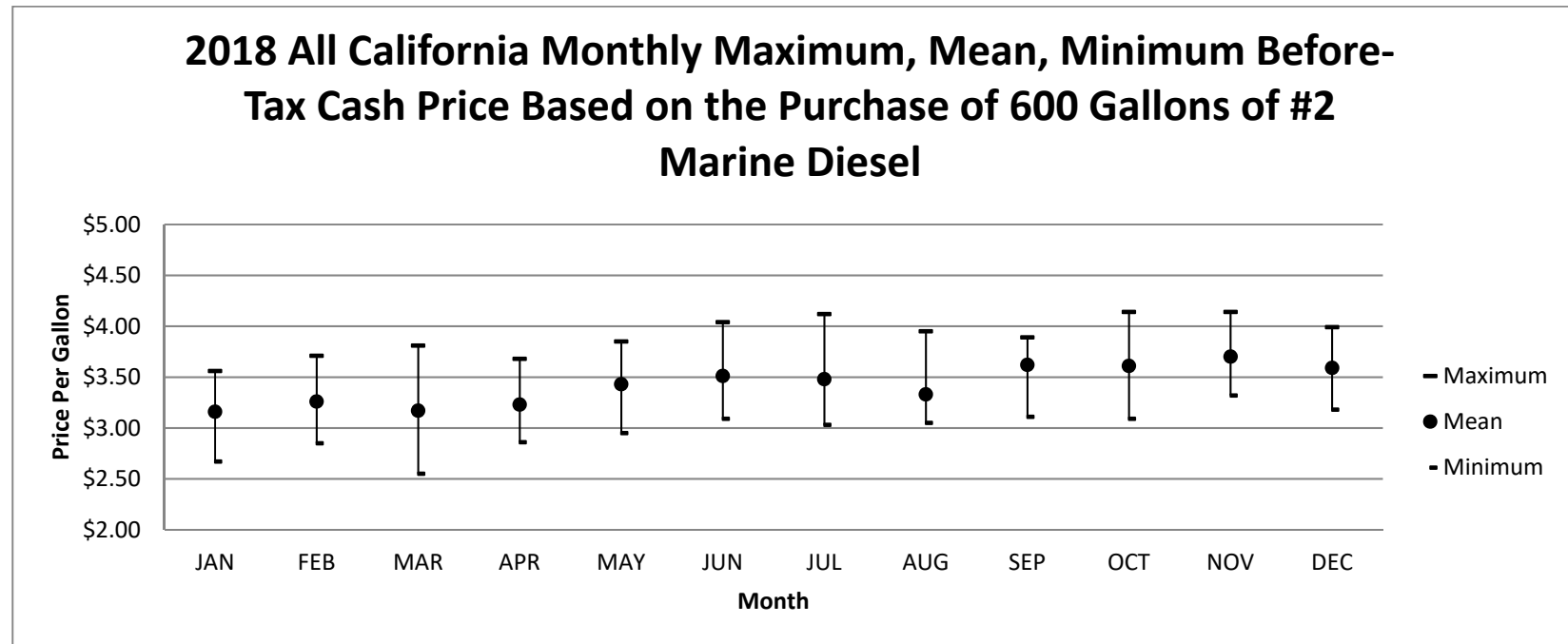
2018	JAN	FEB	MAR	APR	MAY	JUN	JUL	AUG	SEP	OCT	NOV	DEC
All California	\$3.16	\$3.26	\$3.17	\$3.23	\$3.43	\$3.51	\$3.48	\$3.33	\$3.62	\$3.61	\$3.70	\$3.59
2017	JAN	FEB	MAR	APR	MAY	JUN	JUL	AUG	SEP	OCT	NOV	DEC
All California	\$2.96	\$2.96	\$3.02	\$2.98	\$2.95	\$2.90	\$2.73	\$2.78	\$3.12	\$3.00	\$3.07	\$3.29
2016	JAN	FEB	MAR	APR	MAY	JUN	JUL	AUG	SEP	OCT	NOV	DEC
All California	\$2.68	\$2.41	\$2.41	\$2.50	\$2.67	\$2.88	\$2.87	\$2.77	\$2.78	\$2.77	\$2.93	\$2.83

2018 California Fuel Prices State-Level Summaries

Average Before-Tax Cash Price Based on the Purchase of 600 Gallons of #2 Marine Diesel



2018 All California



Month	Maximum	Mean	Minimum	Standard Deviation	Number of Fuel Suppliers Responding
JAN	\$3.56	\$3.16	\$2.67	\$0.35	6
FEB	\$3.71	\$3.26	\$2.85	\$0.34	6
MAR	\$3.81	\$3.17	\$2.55	\$0.42	7
APR	\$3.68	\$3.23	\$2.86	\$0.35	5
MAY	\$3.85	\$3.43	\$2.95	\$0.36	6
JUN	\$4.04	\$3.51	\$3.09	\$0.39	5
JUL	\$4.12	\$3.48	\$3.03	\$0.40	5
AUG	\$3.95	\$3.33	\$3.05	\$0.69	6
SEP	\$3.89	\$3.62	\$3.11	\$0.30	7
OCT	\$4.14	\$3.61	\$3.09	\$0.48	5
NOV	\$4.14	\$3.70	\$3.32	\$0.31	6
DEC	\$3.99	\$3.59	\$3.18	\$0.26	7