

# **West Coast and Alaska Marine Fuel Prices 2006-2008**

## **Annual Report**



Economic Fisheries Information Network  
Pacific States Marine Fisheries Commission

205 S.E. Spokane Street, Suite 100  
Portland, OR 97202  
efin@psmfc.org ♦ <http://www.psmfc.org/efin>  
(503) 595-3100 voice ♦ (503) 595-3232 fax

# Marine Fuel Prices

## Table of Contents

---

*This document was created to assist users of marine fuel price data from the Economic Fisheries Information Network (EFIN) Website. It contains the following information:*

- General Information
  - Data Retrieval Location
  - Contacts
- Sample
  - Port Selection Method
  - Selected Ports
  - Changes Since Inception
  - Fuel Suppliers
- Data Collection
  - Date of Collection
  - Price Data Collected
  - Data Availability
  - Variable Formats
- Data Charts for Alaska, Washington, Oregon & California
  - 2006-2008 State-Level Summary
    - 2008 State-Level Summary
    - 2007 State-Level Summary
    - 2006 State-Level Summary
  - 2006-2008 Regional-Level Summary for Alaska
    - 2008 Regional-Level Summary for Alaska
    - 2008 Southeast Alaska
    - 2008 Rest of Alaska
  - 2006-2008 Regional-Level Summary for Washington
    - 2008 Regional-Level Summary for Washington
    - 2008 Northern Washington
    - 2008 Puget Sound
    - 2008 Seattle
    - 2008 Washington Coast
  - 2006-2008 Regional-Level Summary for Oregon
    - 2008 Regional-Level Summary for Oregon
    - 2008 Northern Oregon
    - 2008 Southern Oregon
  - 2006-2008 Regional-Level Summary for California
    - 2008 Regional-Level Summary for California
    - 2008 Northern California
    - 2008 Southern California

# General Information

---

## Data Retrieval Location

This data was retrieved from the Pacific States Marine Fisheries Commission's EFIN Program at <http://www.psmfc.org/efin>.

## Contacts

Please direct any questions, suggestions or other comments to:

Dave Colpo  
Sr. Program Manager  
[dave\\_colpo@psmfc.org](mailto:dave_colpo@psmfc.org)  
(503) 595-3100

# Sample

---

## Port Selection Method

### *Alaska*

Originally, ports were selected out of discussions with Alaska Department of Fish and Game (ADF&G) and North Pacific Fishery Management Council (NPFMC) staff. The selected ports were chosen to include ports with significant revenue generation, and were broadly geographically representative of commercial fishing ports in Alaska.

### *California/Oregon/Washington*

Ports in Washington, Oregon and California were selected if:

- The port meets at least one of the following:
  - ◊ was included in the National Marine Fisheries Service (NMFS) Southwest Region's collection of fuel prices, which was suspended in 1994;
  - ◊ or was one of the top 25 revenue generating ports\* on the West Coast in 1997;
  - ◊ or was one of the top 10 revenue generating ports\* in the state in 1997;
- and has a fuel supplier
- and is identified by a single port in the PacFIN port codes (as opposed to a group of ports; e.g., OSF - Other San Francisco Ports)

## Changes Since Inception

Since the survey's inception, suppliers were added to increase coverage:

- Adak, Naknek, Dillingham, Yakutat and Wrangell (AK) were added in 2001.
- Astoria was grouped with N. Oregon due to less than two fuel suppliers reporting, 2001.
- Bay Area and Southern California were grouped together in 2004.
- Brookings added to contacts in February 2005.
- Blaine, Tacoma and Port Hueneme returned to survey 2006.
- New contacts established in Morro Bay, Newport, San Pedro, Seattle and Tillamook 2006.

The following ports are no longer included in the final project:

- Terminal Island (CA) and Willapa Bay (WA) were excluded from this list due to their extremely close proximity to other ports from which price data are already collected in 1999.
- Monterey Bay was excluded, because contact with the fuel supplier could not be made in 1999.
- Coos Bay (OR) declined to further participate, 2000.
- Brookings and Port Orford (CA) were dropped due to a lack of contact in 2001.
- Princeton (CA) declined to participate, 2001.
- Blaine (WA) and St. Paul Island (AK) were dropped due to a lack of contact in 2002.
- Port Hueneme (CA), Morro Bay (CA) and one Astoria (OR) supplier were dropped due to a lack of contact in 2003.
- Depot Bay (OR) went out of business in 2003.
- San Pedro (CA) declined to participate in 2004.
- Bodega Bay (CA) went out of business in 2008.

---

\* Revenue generation figures are based on revenue data associated with all species from PacFIN on 30 Dec 98.

## Selected Ports

Fuel suppliers who provided data include the following:

### *Alaska*

#### *Southeast*

- Juneau
- Ketchikan
- Petersburg
- Sitka
- Wrangell
- Yakutat

#### *Rest of Alaska*

- Adak
- Akutan
- Cordova
- Naknek
- Seward
- Homer
- Kodiak
- Sand Point
- Dutch Harbor
- Dillingham





## Fuel Suppliers

At least one fuel supplier in each selected port was surveyed. Its “Fuel Dock Identifier” uniquely identifies each fuel supplier. This identifier was formed by using the three-letter Pacific Fisheries Information Network and Alaska Fisheries Information Network’s (PACFIN/AKFIN) port code for the location of the fuel supplier followed by a sequential number. For example, KTN2 identifies the second fuel supplier surveyed in Ketchikan, AK and SEA4 identifies the fourth fuel supplier surveyed in Seattle, WA. A fuel supplier’s identifier will remain unique to that dock throughout the collection of this data to allow a single dock to be identified over time.

Fuel suppliers were selected on the following basis:

1. If a fuel supplier was included in NMFS SW Region's fuel price collection and the dock's phone number is still operational.
2. If a fuel supplier was listed in the "Port Guide" appearing in the 1998 National Fisherman's Journal Pilothouse Guide and Yellow Pages.
3. If a fuel supplier was not located through the "Port Guide" method for a given port, the US West Dex Internet Yellow Pages was used to locate a fuel supplier at that port.
4. In some cases, the Port Office is called in lieu of a fuel supplier. Some suppliers were added to increase coverage in certain areas as their contact information became available.

# Data Collection

---

## Date of Collection

Fuel prices are collected the first Tuesday of each month, given the following contingencies.

- If the first Tuesday of a month is a holiday, prices are collected the following Thursday. For instance, July 4, 2000 was a Tuesday. Price data for July 2000 was collected on Thursday, July 6, 2000. The date the data is collected is stored with the data.
- If the fuel supplier being surveyed does not answer their phone on the first Tuesday of the month, the person surveying the fuel suppliers will try to reach the dock in question one more time during that day and three times on the following Thursday (until the dock is reached). If the dock could not be reached during these attempts, a missing value will appear in the data for that dock.
- If there are other circumstances that prevent the person conducting the survey from being able to do so on the first Tuesday of the month, fuel prices will be collected on the next business day.

## Price Data Collected

The data to be collected are the before tax (where applicable) cash price for 600 gallons of #2 marine diesel for a commercial fishing vessel.

If the before tax price is not available, (i.e., the fuel supplier cannot/will not provide before tax price) the pre-tax price is calculated when possible and a note is made in the "notes" column.

The price collected at 600 gallons, attempts to account for price-breaks that many fuel suppliers have for purchases above 200-500 gallons. We realize that many fishing vessels purchase thousands of gallons at a time and price breaks are offered for larger purchases, however, the largest and most common breaks occur below 600 gallons.

## Data Availability

Fuel price data is available by state and in a combined West Coast/Alaska file. These data are entered and made available on the Economic Fisheries Information Network (EFIN) website in EXCEL and ASCII formats by the second Tuesday of each month.

The link to this data is: <http://www.psmfc.org/efin/data/fuel.html>

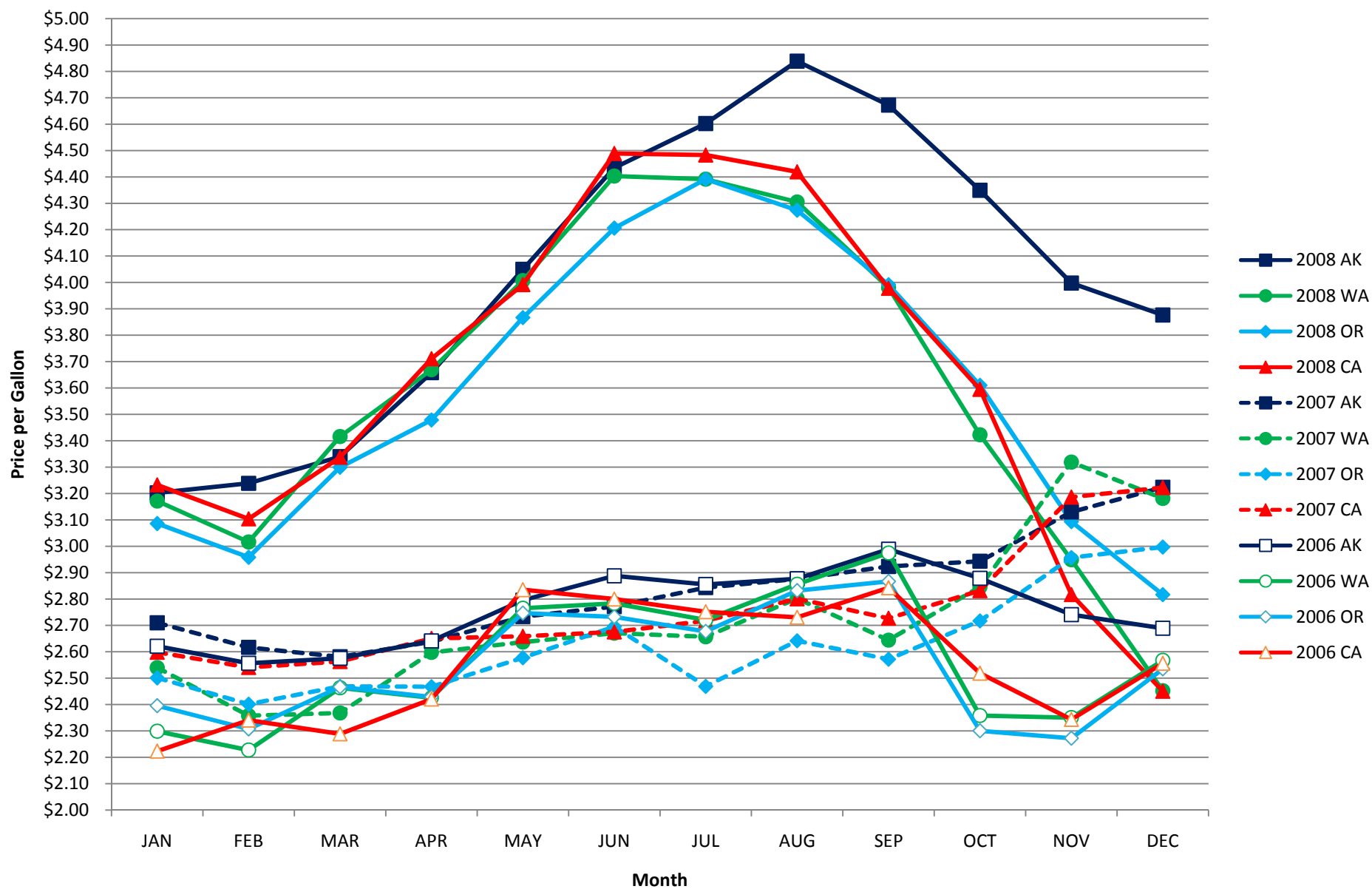
## Variable Formats

Marine fuel price data are available in two formats: as an EXCEL file and as an ASCII fixed width file. Each file contains the following variables:

Variable	Type	Width	Variable Title	Data Values/Notes
Year	Numeric	4.0	Year of fuel price collection	
Month	Numeric	2.0	Month of fuel price collection	1=January, 2=February, etc.
Day	Numeric	2.0	Date of fuel price collection	
Port	Character	3	PacFIN/AKFIN port code	
PortName	Character	30	Name of port	
State	Character	2	State in which port is located	2-letter US Postal Service official abbreviation
DockCode	Character	4	Fuel dock identifier	
Pricettl	Dollar	10.2	Total cash price before tax of 600 gallons of #2 marine diesel in current US dollars	Pricettl=\$0.00 indicates that a total price was unavailable for this fuel supplier
Pricegal	Dollar	6.6	Cash price per gallon before tax of 600 gallons of #2 marine diesel in current US dollars	Pricegal=\$0.000 indicates that a total price was unavailable for this fuel supplier
PxQuoted	Numeric	1.0	Quoted Price	0 = No Price Quoted - See Notes 1 = Price per Gallon Quoted 2 = Total Price Quoted 3 = Both Prices Quoted
Notes	Character	50	Any notes related to anomalies, exceptions, caveats, etc, associated with the data in the record	

## **2006-2008 Data Charts for Alaska, Washington, Oregon and California**

# State Average Before-Tax Cash Price Based on the Purchase of 600 Gallons of #2 Marine Diesel 2006-2008

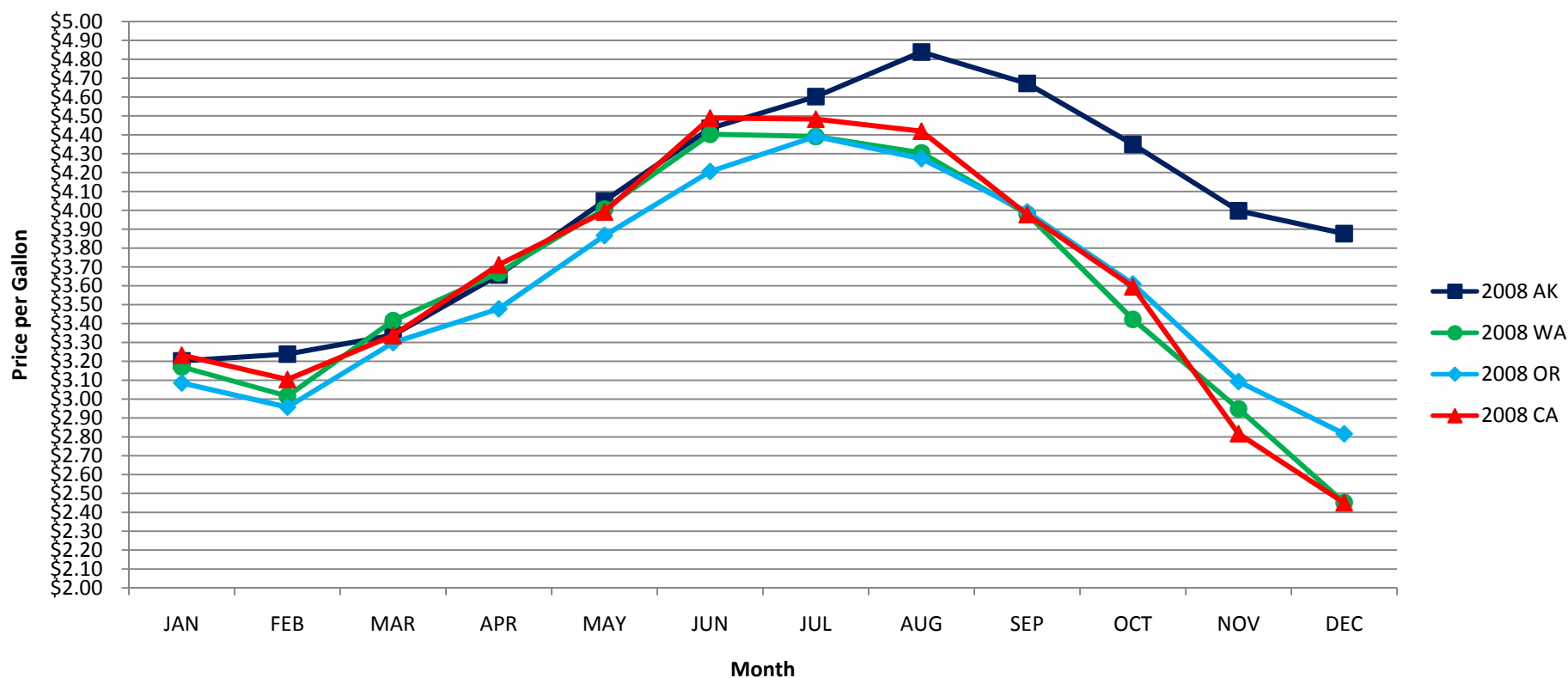


## State Level Summary 2006-2008

<b>2008</b>	<b>JAN</b>	<b>FEB</b>	<b>MAR</b>	<b>APR</b>	<b>MAY</b>	<b>JUN</b>	<b>JUL</b>	<b>AUG</b>	<b>SEP</b>	<b>OCT</b>	<b>NOV</b>	<b>DEC</b>
<b>Alaska</b>	\$3.202	\$3.239	\$3.340	\$3.658	\$4.050	\$4.434	\$4.602	\$4.839	\$4.672	\$4.349	\$3.998	\$3.877
<b>Washington</b>	\$3.171	\$3.016	\$3.416	\$3.669	\$4.007	\$4.403	\$4.391	\$4.305	\$3.980	\$3.423	\$2.949	\$2.452
<b>Oregon</b>	\$3.086	\$2.958	\$3.299	\$3.478	\$3.867	\$4.206	\$4.391	\$4.274	\$3.991	\$3.610	\$3.093	\$2.816
<b>California</b>	\$3.233	\$3.104	\$3.337	\$3.711	\$3.992	\$4.489	\$4.483	\$4.419	\$3.978	\$3.595	\$2.817	\$2.451
<b>2007</b>	<b>JAN</b>	<b>FEB</b>	<b>MAR</b>	<b>APR</b>	<b>MAY</b>	<b>JUN</b>	<b>JUL</b>	<b>AUG</b>	<b>SEP</b>	<b>OCT</b>	<b>NOV</b>	<b>DEC</b>
<b>Alaska</b>	\$2.710	\$2.616	\$2.581	\$2.638	\$2.733	\$2.771	\$2.843	\$2.876	\$2.923	\$2.943	\$3.130	\$3.224
<b>Washington</b>	\$2.540	\$2.358	\$2.368	\$2.597	\$2.637	\$2.670	\$2.657	\$2.802	\$2.644	\$2.846	\$3.319	\$3.181
<b>Oregon</b>	\$2.501	\$2.401	\$2.469	\$2.468	\$2.577	\$2.695	\$2.469	\$2.641	\$2.572	\$2.717	\$2.957	\$2.997
<b>California</b>	\$2.598	\$2.540	\$2.563	\$2.650	\$2.659	\$2.675	\$2.717	\$2.800	\$2.727	\$2.832	\$3.186	\$3.222
<b>2006</b>	<b>JAN</b>	<b>FEB</b>	<b>MAR</b>	<b>APR</b>	<b>MAY</b>	<b>JUN</b>	<b>JUL</b>	<b>AUG</b>	<b>SEP</b>	<b>OCT</b>	<b>NOV</b>	<b>DEC</b>
<b>Alaska</b>	\$2.621	\$2.556	\$2.575	\$2.641	\$2.795	\$2.888	\$2.855	\$2.877	\$2.989	\$2.878	\$2.741	\$2.689
<b>Washington</b>	\$2.299	\$2.227	\$2.463	\$2.425	\$2.765	\$2.783	\$2.720	\$2.856	\$2.974	\$2.358	\$2.350	\$2.567
<b>Oregon</b>	\$2.395	\$2.307	\$2.467	\$2.429	\$2.747	\$2.732	\$2.677	\$2.832	\$2.867	\$2.300	\$2.272	\$2.535
<b>California</b>	\$2.223	\$2.341	\$2.289	\$2.420	\$2.835	\$2.800	\$2.752	\$2.731	\$2.843	\$2.519	\$2.343	\$2.556

## 2008 West Coast Fuel Prices State-Level Summaries

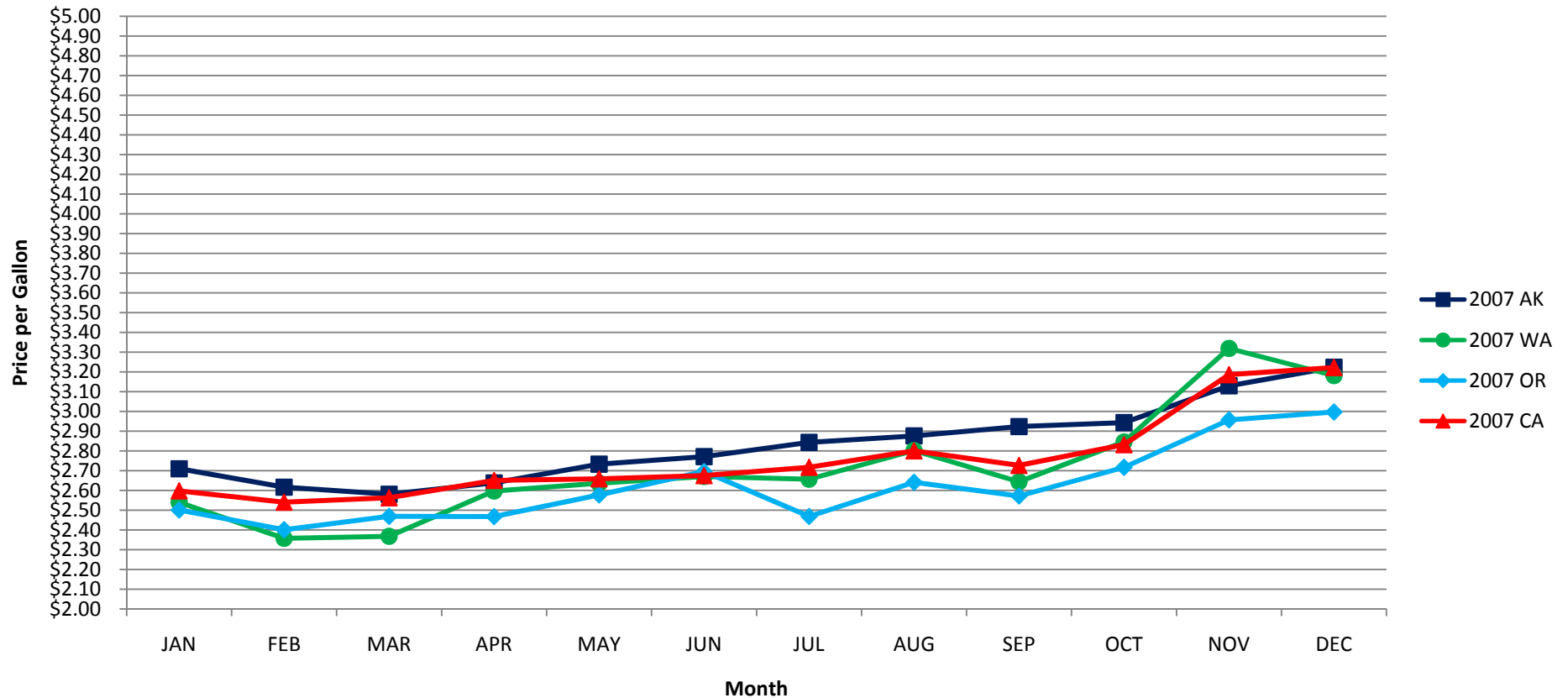
### Average Before-Tax Cash Price Based on the Purchase of 600 Gallons of #2 Marine Diesel



2008	JAN	FEB	MAR	APR	MAY	JUN	JUL	AUG	SEP	OCT	NOV	DEC
Alaska	\$3.202	\$3.239	\$3.340	\$3.658	\$4.050	\$4.434	\$4.602	\$4.839	\$4.672	\$4.349	\$3.998	\$3.877
Washington	\$3.171	\$3.016	\$3.416	\$3.669	\$4.007	\$4.403	\$4.391	\$4.305	\$3.980	\$3.423	\$2.949	\$2.452
Oregon	\$3.086	\$2.958	\$3.299	\$3.478	\$3.867	\$4.206	\$4.391	\$4.274	\$3.991	\$3.610	\$3.093	\$2.816
California	\$3.233	\$3.104	\$3.337	\$3.711	\$3.992	\$4.489	\$4.483	\$4.419	\$3.978	\$3.595	\$2.817	\$2.451

## 2007 West Coast Fuel Prices State-Level Summaries

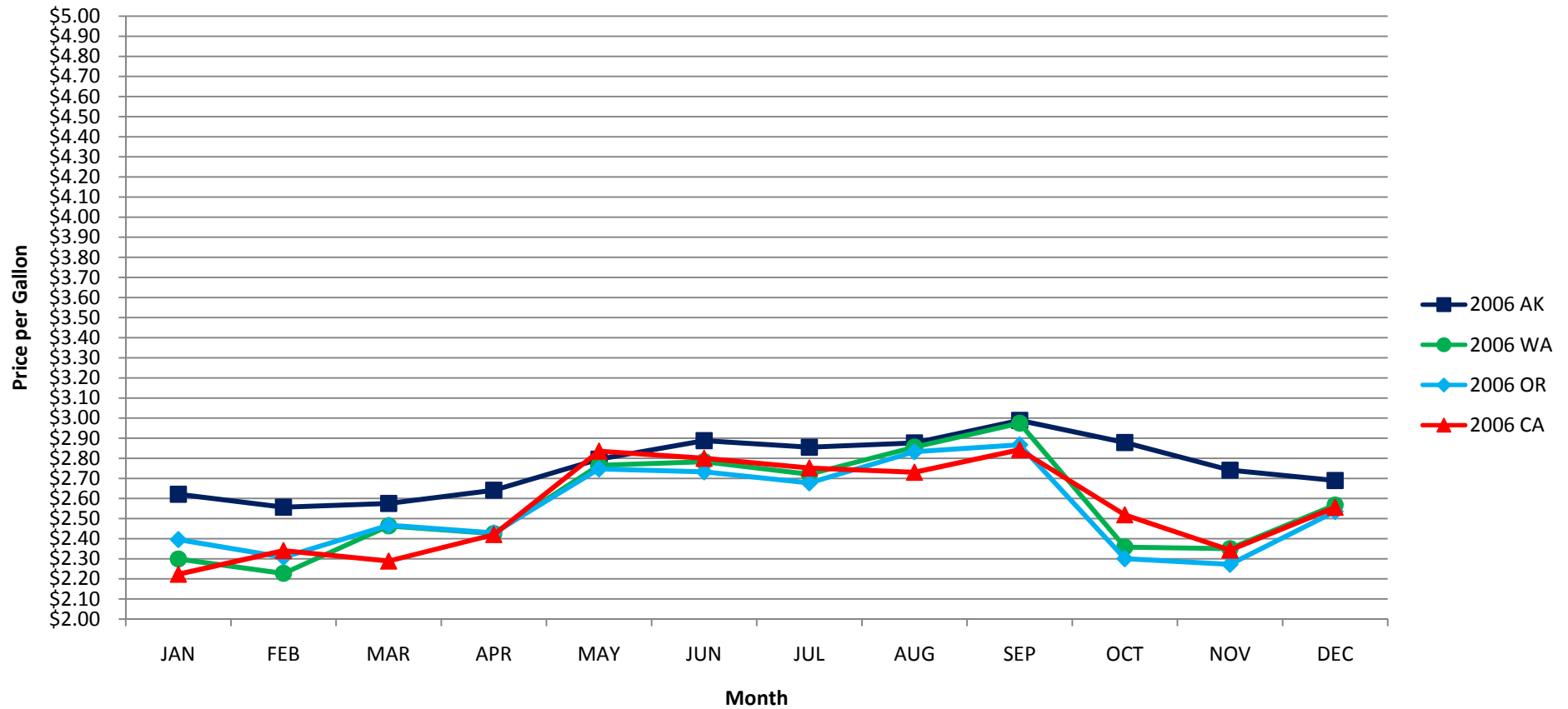
Average Before-Tax Cash Price Based on the Purchase of 600 Gallons of #2 Marine Diesel



2007	JAN	FEB	MAR	APR	MAY	JUN	JUL	AUG	SEP	OCT	NOV	DEC
Alaska	\$2.710	\$2.616	\$2.581	\$2.638	\$2.733	\$2.771	\$2.843	\$2.876	\$2.923	\$2.943	\$3.130	\$3.224
Washington	\$2.540	\$2.358	\$2.368	\$2.597	\$2.637	\$2.670	\$2.657	\$2.802	\$2.644	\$2.846	\$3.319	\$3.181
Oregon	\$2.501	\$2.401	\$2.469	\$2.468	\$2.577	\$2.695	\$2.469	\$2.641	\$2.572	\$2.717	\$2.957	\$2.997
California	\$2.598	\$2.540	\$2.563	\$2.650	\$2.659	\$2.675	\$2.717	\$2.800	\$2.727	\$2.832	\$3.186	\$3.222

## 2006 West Coast Fuel Prices State-Level Summaries

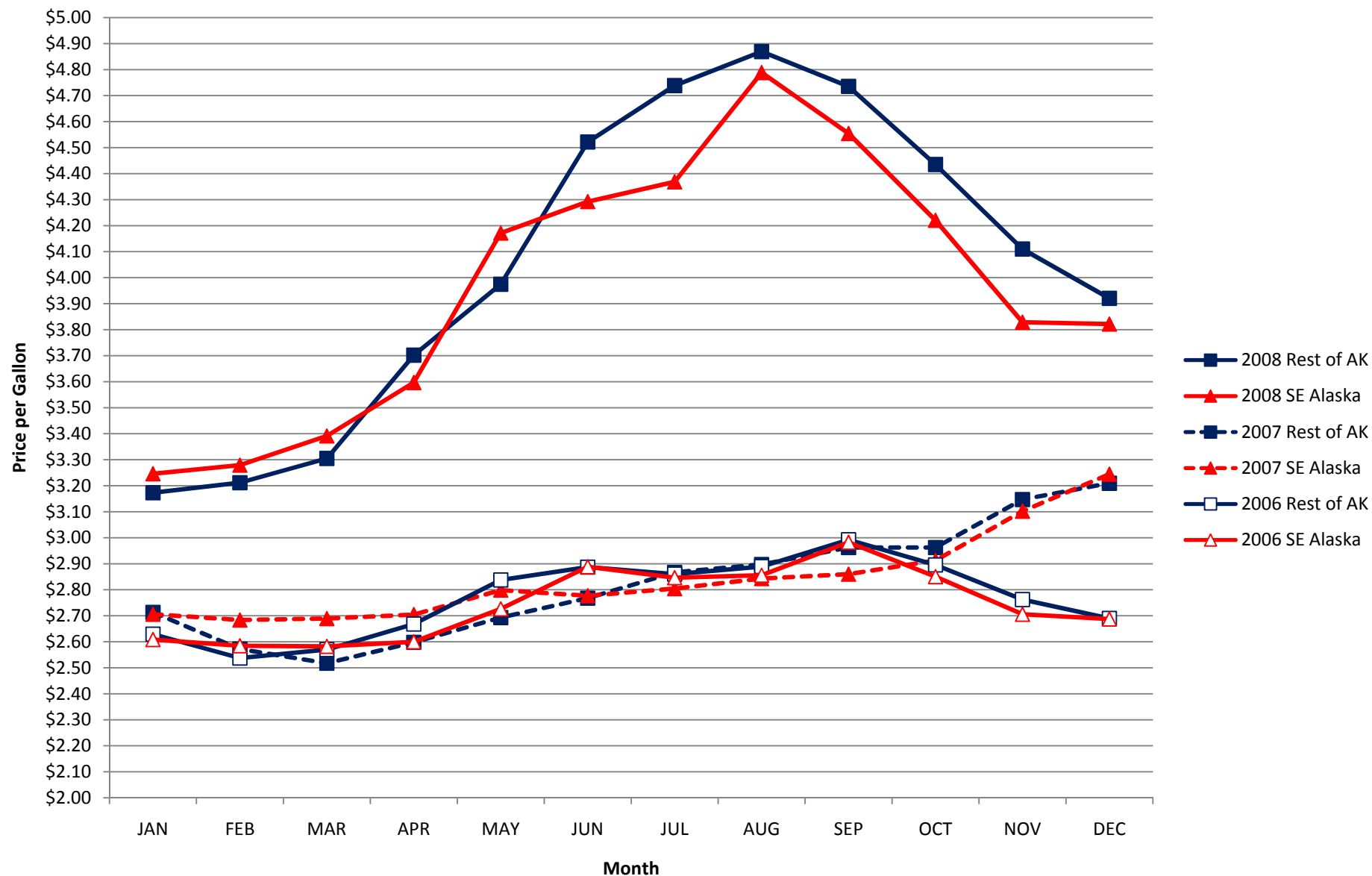
Average Before-Tax Cash Price Based on the Purchase of 600 Gallons of #2 Marine Diesel



2006	JAN	FEB	MAR	APR	MAY	JUN	JUL	AUG	SEP	OCT	NOV	DEC
Alaska	\$2.621	\$2.556	\$2.575	\$2.641	\$2.795	\$2.888	\$2.855	\$2.877	\$2.989	\$2.878	\$2.741	\$2.689
Washington	\$2.299	\$2.227	\$2.463	\$2.425	\$2.765	\$2.783	\$2.720	\$2.856	\$2.974	\$2.358	\$2.350	\$2.567
Oregon	\$2.395	\$2.307	\$2.467	\$2.429	\$2.747	\$2.732	\$2.677	\$2.832	\$2.867	\$2.300	\$2.272	\$2.535
California	\$2.223	\$2.341	\$2.289	\$2.420	\$2.835	\$2.800	\$2.752	\$2.731	\$2.843	\$2.519	\$2.343	\$2.556

## **2006-2008 Regional-Level Summary for Alaska**

# Average Before-Tax Cash Price Based on the Purchase of 600 Gallons of #2 Marine Diesel



## Regional-Level Summary for Alaska

The ports in Alaska are grouped into two regions:

### The Rest of Alaska

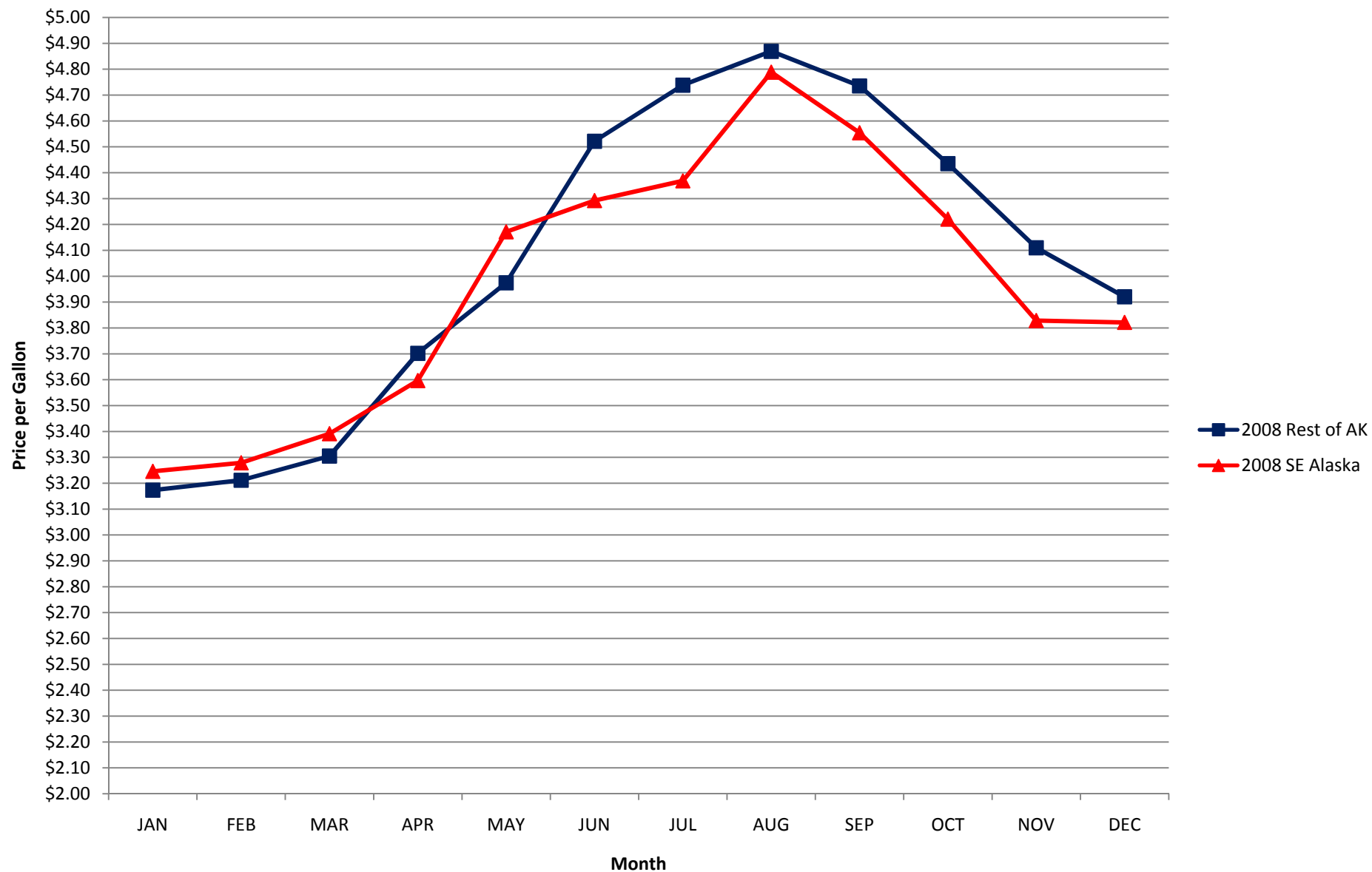
Adak  
Akutan  
Cordova  
Dillingham  
Dutch Harbor  
Homer  
Kodiak  
Naknek  
Sand Point  
Seward

### Southeast Alaska

Juneau  
Ketchikan  
Petersburg  
Sitka  
Wrangell  
Yakutat

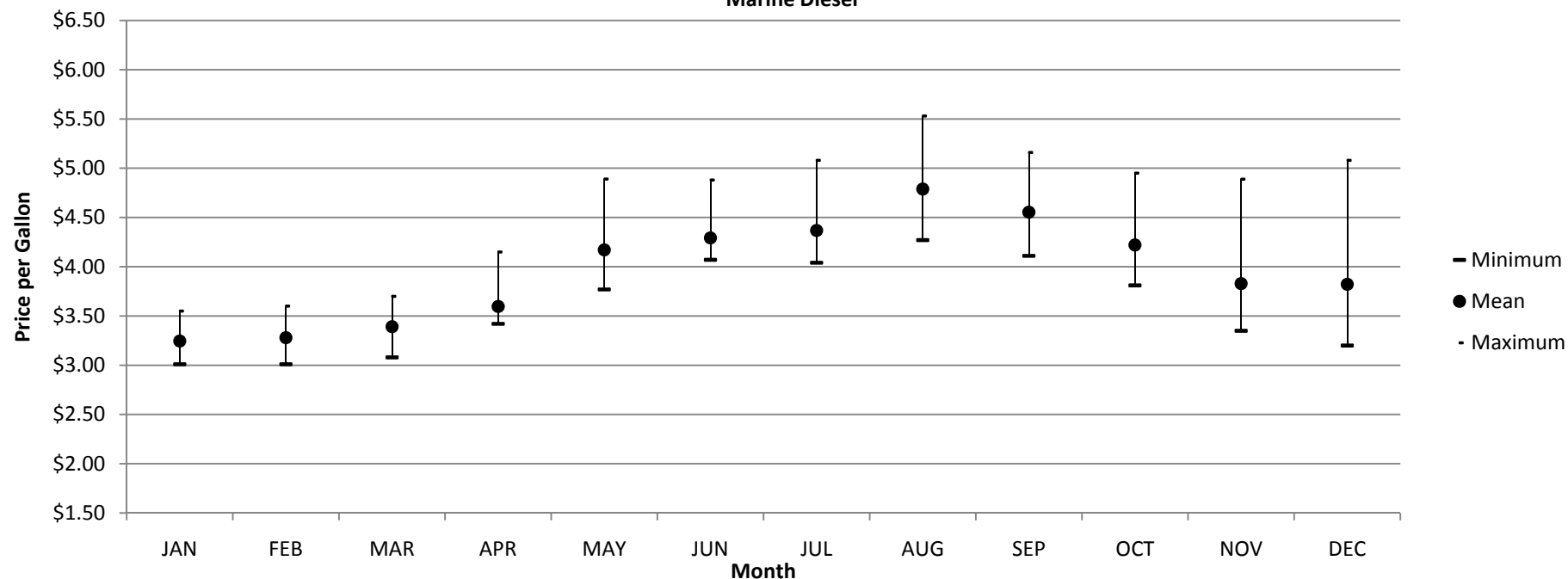
<b>2008</b>	JAN	FEB	MAR	APR	MAY	JUN	JUL	AUG	SEP	OCT	NOV	DEC
<b>Rest of Alaska</b>	\$3.173	\$3.212	\$3.305	\$3.702	\$3.975	\$4.522	\$4.738	\$4.869	\$4.735	\$4.435	\$4.110	\$3.921
<b>Southeast Alaska</b>	\$3.246	\$3.279	\$3.391	\$3.597	\$4.172	\$4.293	\$4.369	\$4.789	\$4.554	\$4.221	\$3.829	\$3.822
<b>2007</b>	JAN	FEB	MAR	APR	MAY	JUN	JUL	AUG	SEP	OCT	NOV	DEC
<b>Rest of Alaska</b>	\$2.713	\$2.572	\$2.518	\$2.598	\$2.693	\$2.768	\$2.867	\$2.897	\$2.962	\$2.962	\$3.147	\$3.210
<b>Southeast Alaska</b>	\$2.706	\$2.684	\$2.689	\$2.704	\$2.799	\$2.777	\$2.804	\$2.843	\$2.860	\$2.912	\$3.102	\$3.244
<b>2006</b>	JAN	FEB	MAR	APR	MAY	JUN	JUL	AUG	SEP	OCT	NOV	DEC
<b>Rest of Alaska</b>	\$2.629	\$2.538	\$2.570	\$2.668	\$2.838	\$2.887	\$2.860	\$2.889	\$2.992	\$2.895	\$2.762	\$2.690
<b>Southeast Alaska</b>	\$2.609	\$2.585	\$2.582	\$2.600	\$2.727	\$2.889	\$2.846	\$2.856	\$2.983	\$2.851	\$2.706	\$2.688

## Average Before-Tax Cash Price Based on the Purchase of 600 Gallons of #2 Marine Diesel



## 2008 Southeast Alaska

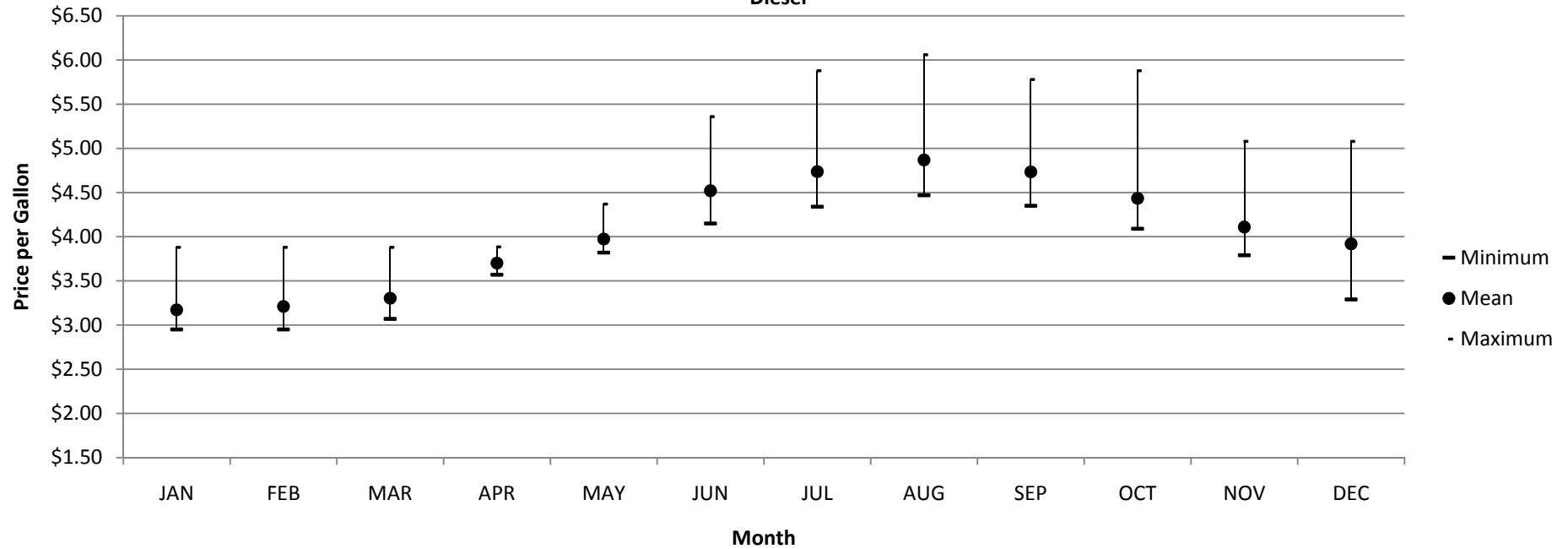
2008 Southeast Alaska Monthly Maximum, Mean, Minimum Before-Tax Cash Price Based on the Purchase of 600 Gallons of #2 Marine Diesel



Month	Minimum	Mean	Maximum	Standard Deviation	Number of Fuel Suppliers Responding
JAN	\$3.010	\$3.246	\$3.550	\$0.175	8
FEB	\$3.010	\$3.279	\$3.600	\$0.197	8
MAR	\$3.080	\$3.391	\$3.700	\$0.176	8
APR	\$3.420	\$3.597	\$4.150	\$0.239	8
MAY	\$3.769	\$4.172	\$4.890	\$0.427	8
JUN	\$4.070	\$4.293	\$4.880	\$0.323	8
JUL	\$4.040	\$4.369	\$5.080	\$0.336	7
AUG	\$4.270	\$4.789	\$5.530	\$0.507	8
SEP	\$4.110	\$4.554	\$5.160	\$0.388	7
OCT	\$3.810	\$4.221	\$4.950	\$0.462	8
NOV	\$3.350	\$3.829	\$4.889	\$0.567	8
DEC	\$3.200	\$3.822	\$5.080	\$0.668	8

## 2008 Rest of Alaska

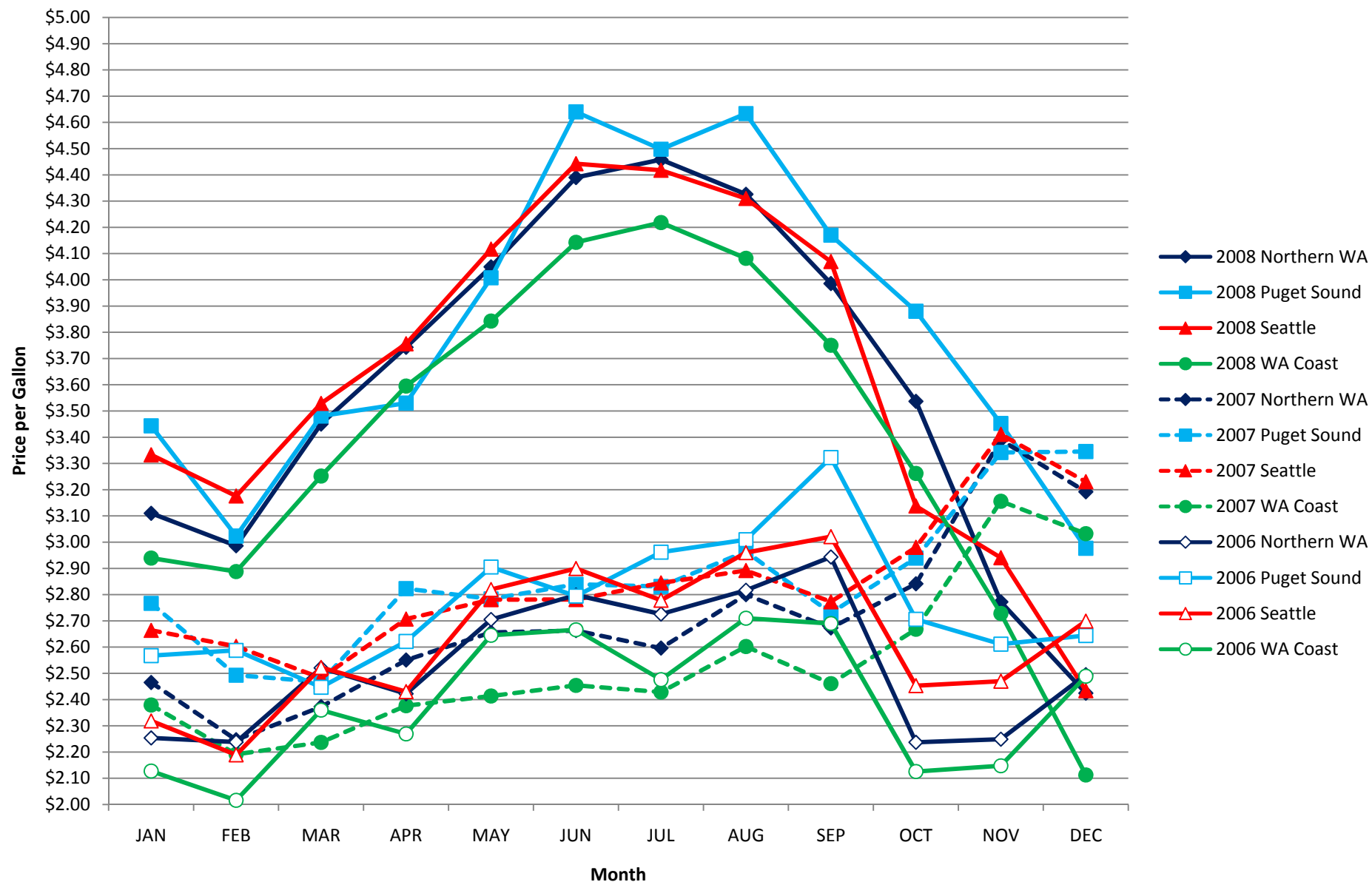
2008 Rest of Alaska Monthly Maximum, Mean, Minimum Before-Tax Cash Price Based on the Purchase of 600 Gallons of #2 Marine Diesel



Month	Minimum	Mean	Maximum	Standard Deviation	Number of Fuel Suppliers Responding
JAN	\$2.950	\$3.173	\$3.880	\$0.269	12
FEB	\$2.950	\$3.212	\$3.880	\$0.282	12
MAR	\$3.070	\$3.305	\$3.880	\$0.240	12
APR	\$3.570	\$3.702	\$3.884	\$0.102	11
MAY	\$3.820	\$3.975	\$4.370	\$0.158	13
JUN	\$4.150	\$4.522	\$5.360	\$0.431	13
JUL	\$4.340	\$4.738	\$5.880	\$0.539	12
AUG	\$4.470	\$4.869	\$6.060	\$0.491	13
SEP	\$4.350	\$4.735	\$5.780	\$0.477	13
OCT	\$4.090	\$4.435	\$5.880	\$0.474	12
NOV	\$3.790	\$4.110	\$5.080	\$0.377	12
DEC	\$3.290	\$3.921	\$5.080	\$0.545	10

## **2006-2008 Regional-Level Summary for Washington**

## Average Before-Tax Cash Price Based on the Purchase of 600 Gallons of #2 Marine Diesel



## Regional-Level Summary for Washington

The ports in Washington are grouped into four regions:

### Washington Coast

Ilwaco/Chinook  
Neah Bay  
Port Angeles  
Westport

### Puget Sound

Everett  
Olympia  
Shelton  
Tacoma

### Northern Washington

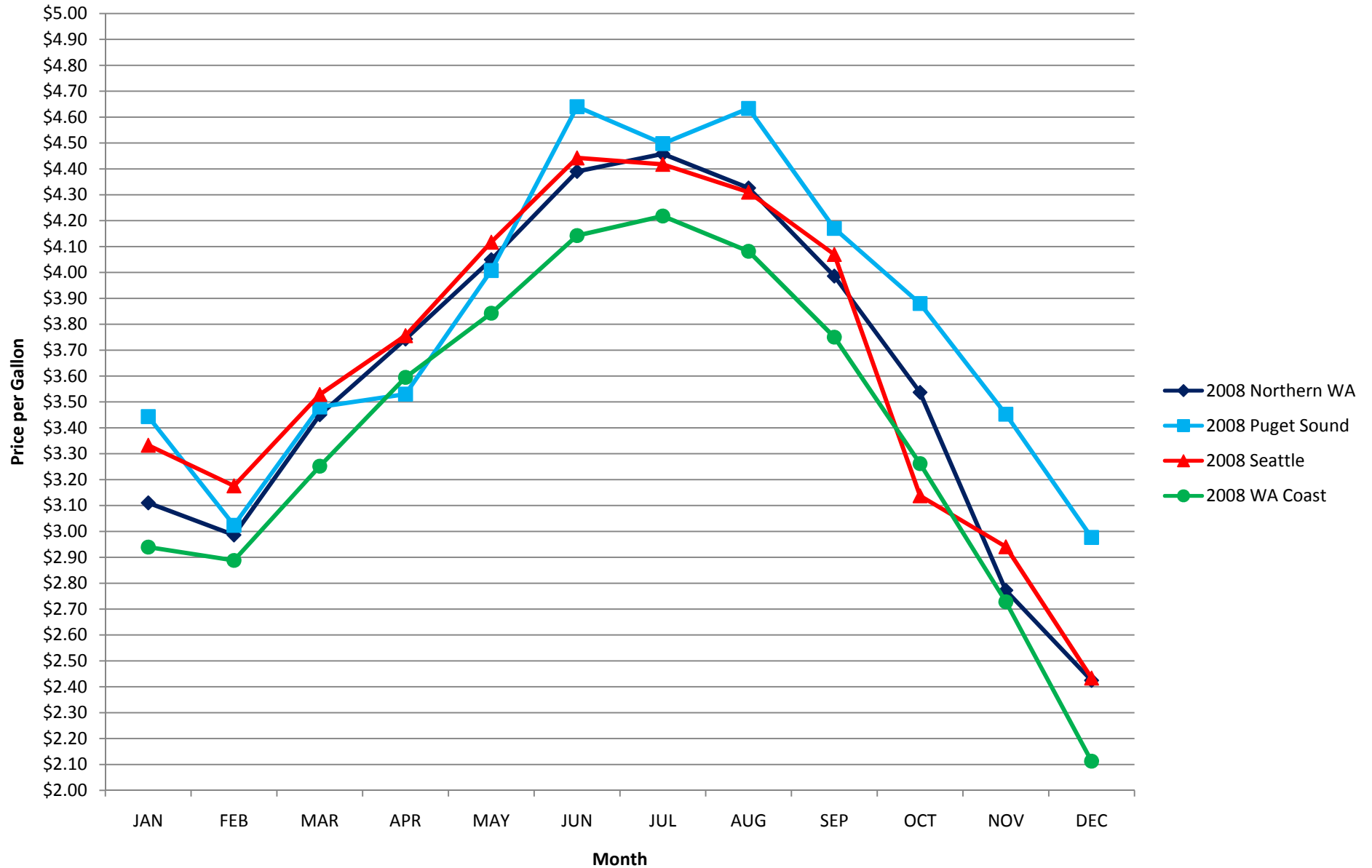
Anacortes  
Bellingham Bay  
Blaine  
Port Townsend

### Seattle

Seattle

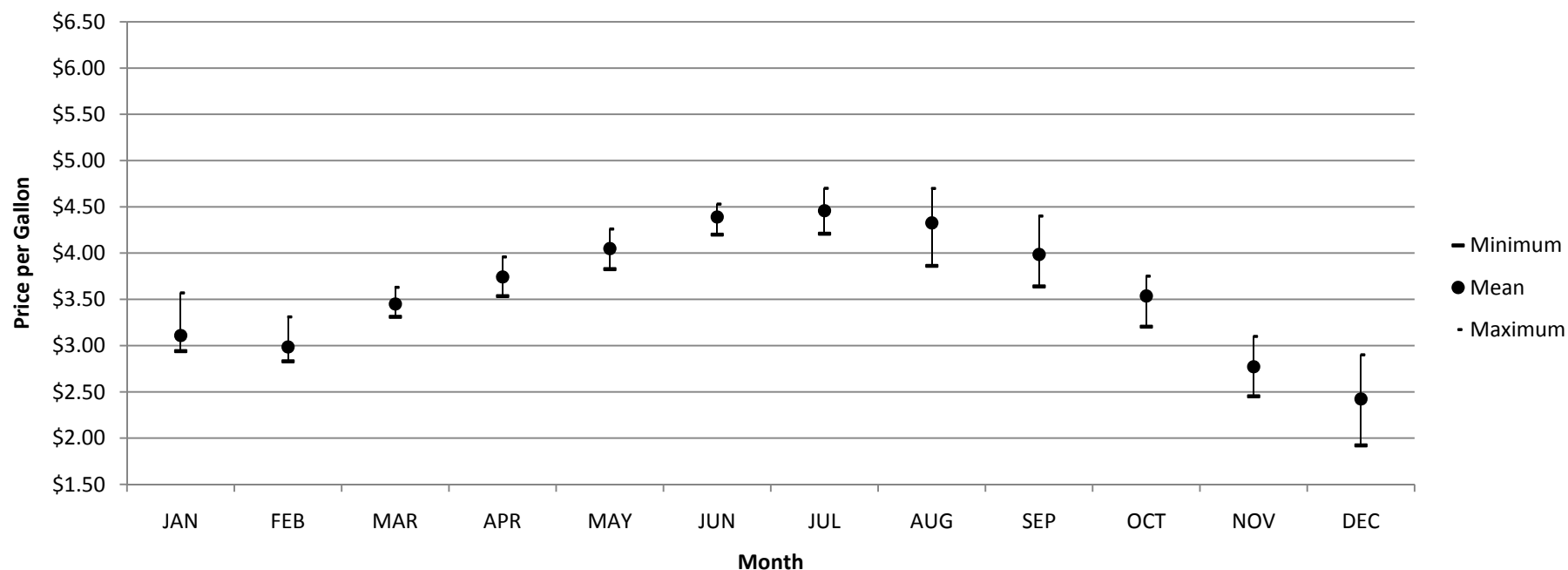
<b>2008</b>	<b>JAN</b>	<b>FEB</b>	<b>MAR</b>	<b>APR</b>	<b>MAY</b>	<b>JUN</b>	<b>JUL</b>	<b>AUG</b>	<b>SEP</b>	<b>OCT</b>	<b>NOV</b>	<b>DEC</b>
<b>Northern Washington</b>	\$3.110	\$2.986	\$3.450	\$3.743	\$4.049	\$4.390	\$4.458	\$4.326	\$3.986	\$3.537	\$2.772	\$2.424
<b>Puget Sound</b>	\$3.443	\$3.023	\$3.481	\$3.530	\$4.008	\$4.640	\$4.498	\$4.633	\$4.170	\$3.880	\$3.453	\$2.977
<b>Seattle</b>	\$3.333	\$3.176	\$3.529	\$3.756	\$4.117	\$4.443	\$4.418	\$4.310	\$4.070	\$3.138	\$2.941	\$2.434
<b>Washington Coast</b>	\$2.939	\$2.888	\$3.252	\$3.595	\$3.843	\$4.143	\$4.218	\$4.082	\$3.750	\$3.262	\$2.728	\$2.113
<b>2007</b>	<b>JAN</b>	<b>FEB</b>	<b>MAR</b>	<b>APR</b>	<b>MAY</b>	<b>JUN</b>	<b>JUL</b>	<b>AUG</b>	<b>SEP</b>	<b>OCT</b>	<b>NOV</b>	<b>DEC</b>
<b>Northern Washington</b>	\$2.465	\$2.247	\$2.373	\$2.551	\$2.656	\$2.663	\$2.596	\$2.800	\$2.673	\$2.841	\$3.390	\$3.192
<b>Puget Sound</b>	\$2.767	\$2.493	\$2.467	\$2.823	\$2.784	\$2.839	\$2.831	\$2.964	\$2.730	\$2.939	\$3.342	\$3.345
<b>Seattle</b>	\$2.664	\$2.603	\$2.482	\$2.707	\$2.781	\$2.781	\$2.845	\$2.892	\$2.773	\$2.980	\$3.411	\$3.231
<b>Washington Coast</b>	\$2.379	\$2.191	\$2.236	\$2.376	\$2.413	\$2.454	\$2.428	\$2.602	\$2.461	\$2.668	\$3.156	\$3.032
<b>2006</b>	<b>JAN</b>	<b>FEB</b>	<b>MAR</b>	<b>APR</b>	<b>MAY</b>	<b>JUN</b>	<b>JUL</b>	<b>AUG</b>	<b>SEP</b>	<b>OCT</b>	<b>NOV</b>	<b>DEC</b>
<b>Northern Washington</b>	\$2.253	\$2.238	\$2.520	\$2.422	\$2.705	\$2.798	\$2.726	\$2.816	\$2.943	\$2.237	\$2.249	\$2.495
<b>Puget Sound</b>	\$2.567	\$2.587	\$2.447	\$2.621	\$2.905	\$2.794	\$2.962	\$3.009	\$3.322	\$2.706	\$2.611	\$2.644
<b>Seattle</b>	\$2.318	\$2.189	\$2.522	\$2.430	\$2.819	\$2.899	\$2.779	\$2.960	\$3.021	\$2.453	\$2.470	\$2.699
<b>Washington Coast</b>	\$2.128	\$2.016	\$2.360	\$2.269	\$2.645	\$2.666	\$2.476	\$2.710	\$2.690	\$2.126	\$2.148	\$2.489

## Average Before-Tax Cash Price Based on the Purchase of 600 Gallons of #2 Marine Diesel



## 2008 Northern Washington

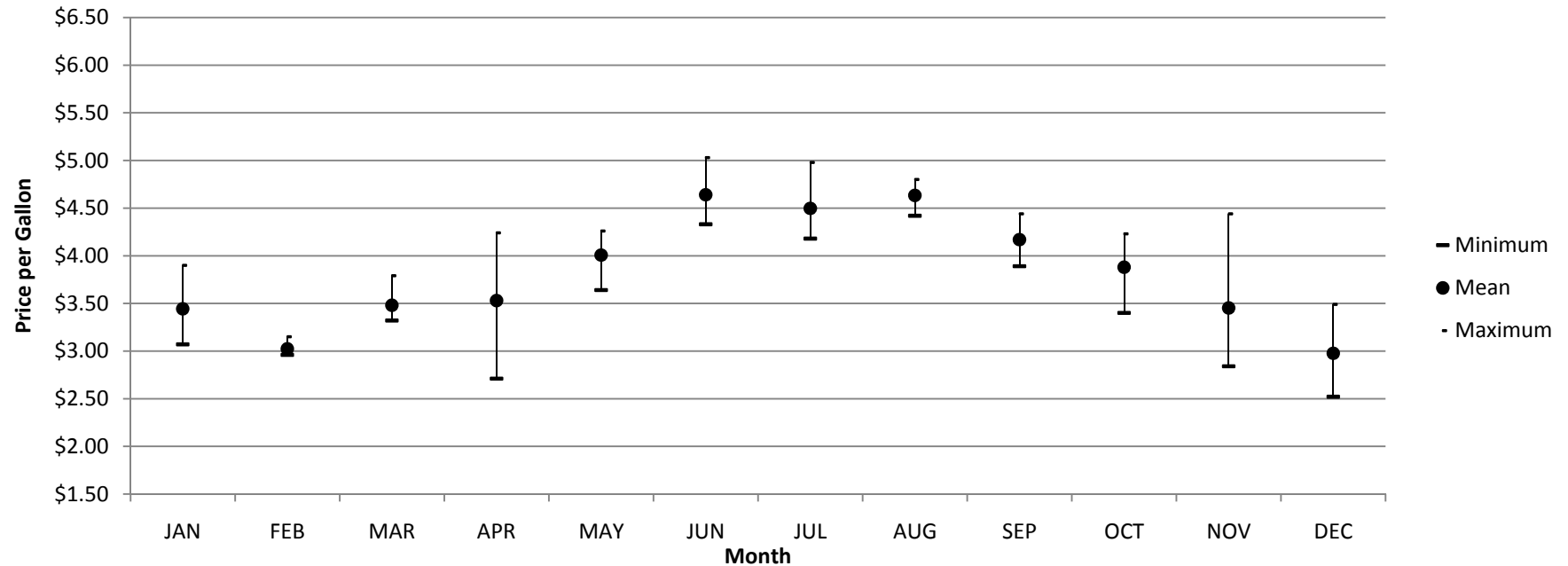
2008 Northern Washington Monthly Maximum, Mean, Minimum Before-Tax Cash Price Based on the Purchase of 600 Gallons of #2 Marine Diesel



Month	Minimum	Mean	Maximum	Standard Deviation	Number of Fuel Suppliers Responding
JAN	\$2.940	\$3.110	\$3.569	\$0.260	5
FEB	\$2.830	\$2.986	\$3.310	\$0.201	5
MAR	\$3.312	\$3.450	\$3.630	\$0.138	5
APR	\$3.535	\$3.743	\$3.959	\$0.152	5
MAY	\$3.827	\$4.049	\$4.260	\$0.178	5
JUN	\$4.200	\$4.390	\$4.530	\$0.132	5
JUL	\$4.210	\$4.458	\$4.700	\$0.179	5
AUG	\$3.862	\$4.326	\$4.699	\$0.357	5
SEP	\$3.640	\$3.986	\$4.400	\$0.287	5
OCT	\$3.205	\$3.537	\$3.750	\$0.215	5
NOV	\$2.452	\$2.772	\$3.099	\$0.290	5
DEC	\$1.921	\$2.424	\$2.900	\$0.444	5

## 2008 Puget Sound

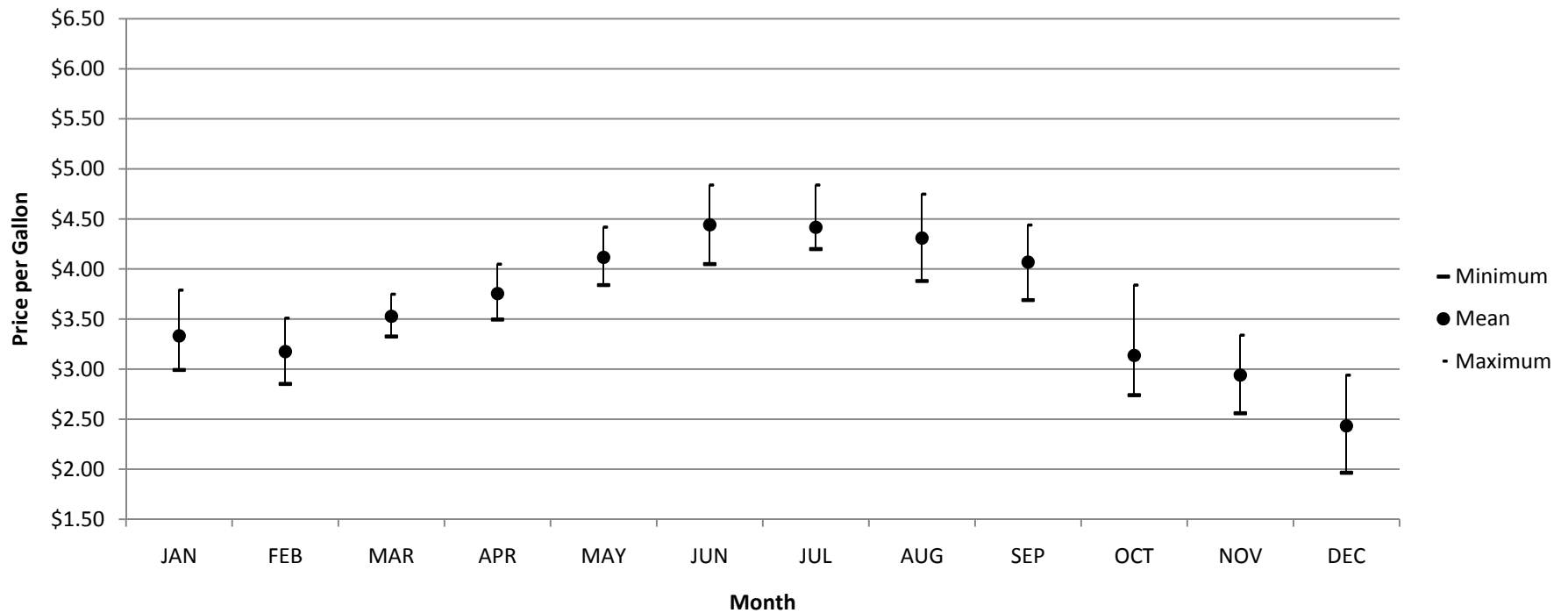
2008 Puget Sound Monthly Maximum, Mean, Minimum Before-Tax Cash Price Based on the Purchase of 600 Gallons of #2 Marine Diesel



Month	Minimum	Mean	Maximum	Standard Deviation	Number of Fuel Suppliers Responding
JAN	\$3.070	\$3.443	\$3.900	\$0.421	3
FEB	\$2.960	\$3.023	\$3.150	\$0.110	3
MAR	\$3.320	\$3.481	\$3.790	\$0.268	3
APR	\$2.710	\$3.530	\$4.240	\$0.771	3
MAY	\$3.640	\$4.008	\$4.260	\$0.262	4
JUN	\$4.330	\$4.640	\$5.030	\$0.318	4
JUL	\$4.180	\$4.498	\$4.980	\$0.341	4
AUG	\$4.420	\$4.633	\$4.800	\$0.194	3
SEP	\$3.890	\$4.170	\$4.440	\$0.235	4
OCT	\$3.400	\$3.880	\$4.230	\$0.430	3
NOV	\$2.840	\$3.453	\$4.440	\$0.689	4
DEC	\$2.520	\$2.977	\$3.490	\$0.487	3

## 2008 Seattle

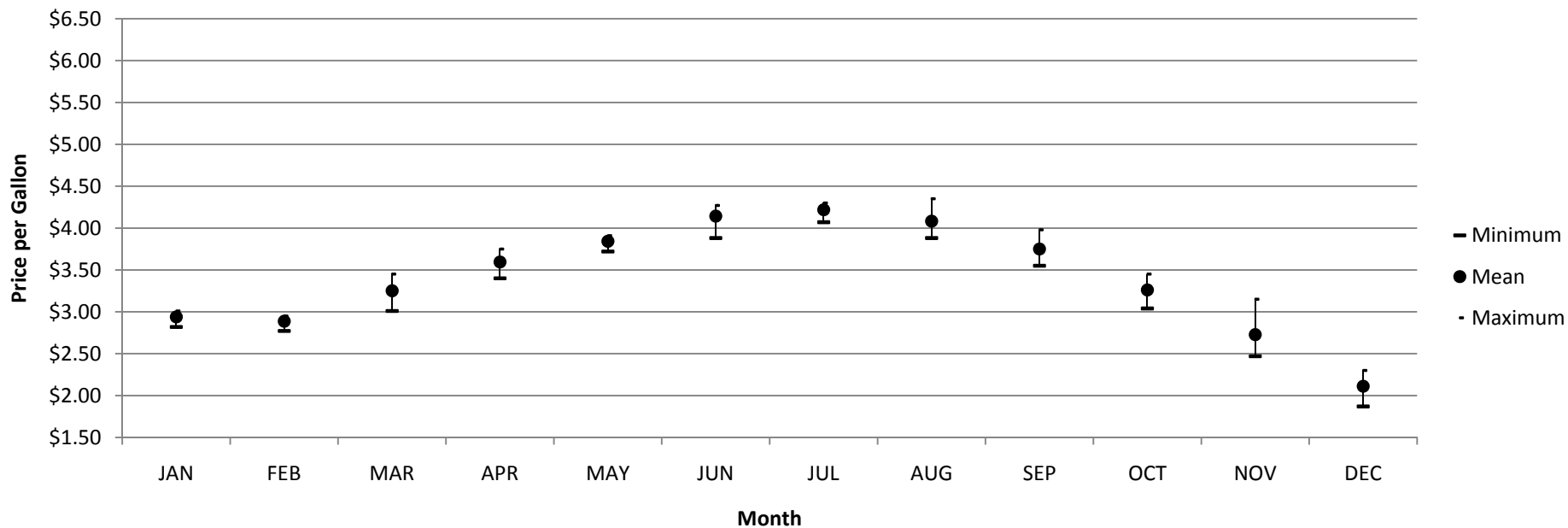
2008 Seattle Monthly Maximum, mean, Minimum Before-Tax Cash Price Based on the Purchase of 600 Gallons of #2 Marine Diesel



Month	Minimum	Mean	Maximum	Standard Deviation	Number of Fuel Suppliers Responding
JAN	\$2.992	\$3.333	\$3.790	\$0.401	4
FEB	\$2.853	\$3.176	\$3.510	\$0.363	4
MAR	\$3.326	\$3.529	\$3.749	\$0.222	4
APR	\$3.496	\$3.756	\$4.049	\$0.284	4
MAY	\$3.840	\$4.117	\$4.419	\$0.310	4
JUN	\$4.050	\$4.443	\$4.840	\$0.405	4
JUL	\$4.200	\$4.418	\$4.840	\$0.295	4
AUG	\$3.881	\$4.310	\$4.749	\$0.485	4
SEP	\$3.690	\$4.070	\$4.440	\$0.428	4
OCT	\$2.740	\$3.138	\$3.840	\$0.483	4
NOV	\$2.560	\$2.941	\$3.340	\$0.412	4
DEC	\$1.965	\$2.434	\$2.940	\$0.534	4

## 2008 Washington Coast

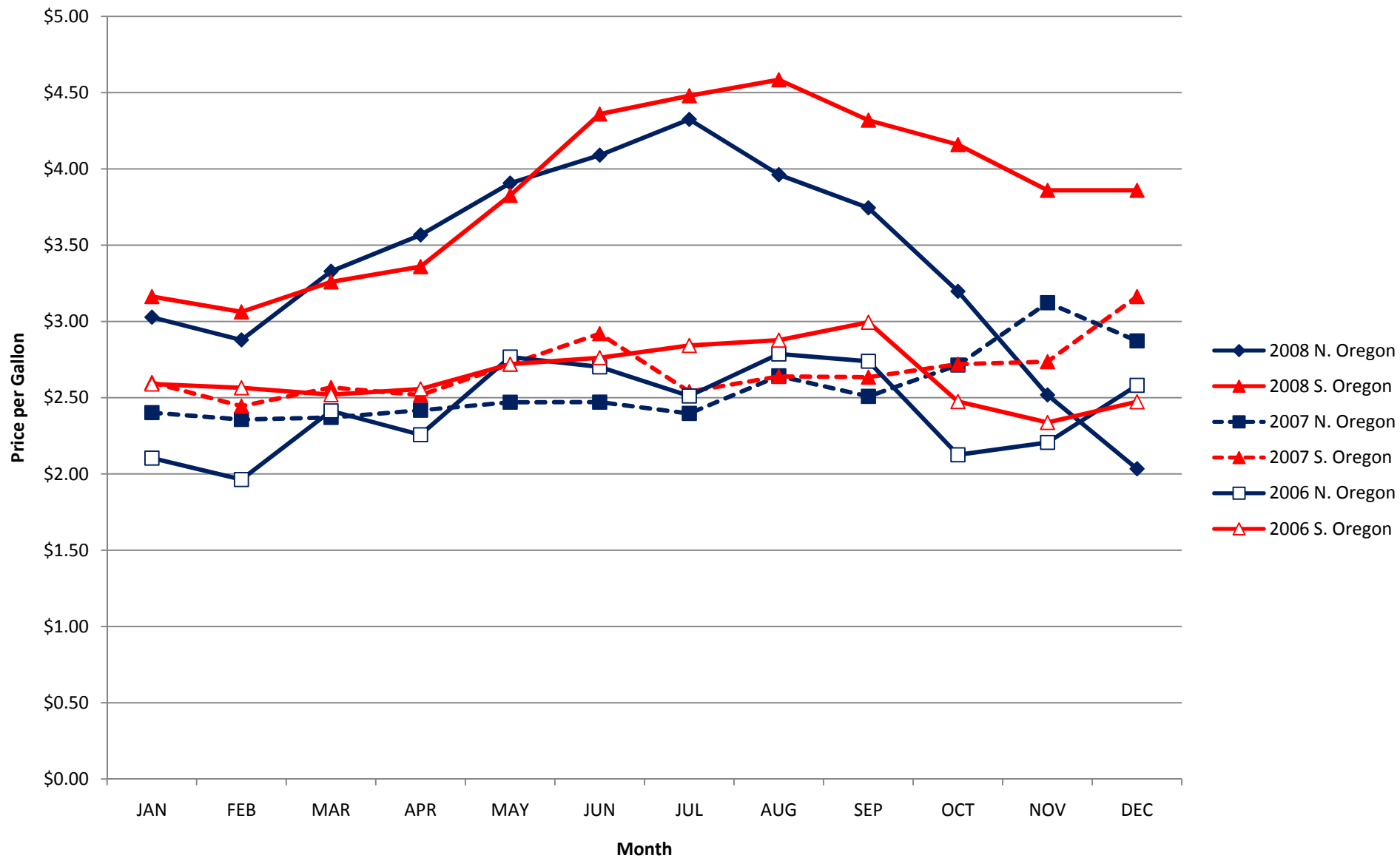
2008 Washington Coast Monthly Maximum, Mean, Minimum Before-Tax Cash Price Based on the Purchase of 600 Gallons of #2 Marine Diesel



Month	Minimum	Mean	Maximum	Standard Deviation	Number of Fuel Suppliers Responding
JAN	\$2.819	\$2.939	\$3.010	\$0.078	5
FEB	\$2.772	\$2.888	\$2.950	\$0.082	4
MAR	\$3.010	\$3.252	\$3.450	\$0.167	5
APR	\$3.400	\$3.595	\$3.750	\$0.151	4
MAY	\$3.720	\$3.843	\$3.910	\$0.085	4
JUN	\$3.880	\$4.143	\$4.270	\$0.180	4
JUL	\$4.070	\$4.218	\$4.300	\$0.092	5
AUG	\$3.880	\$4.082	\$4.350	\$0.182	5
SEP	\$3.550	\$3.750	\$3.980	\$0.155	5
OCT	\$3.040	\$3.262	\$3.450	\$0.148	5
NOV	\$2.470	\$2.728	\$3.150	\$0.259	5
DEC	\$1.870	\$2.113	\$2.300	\$0.183	4

## **2006-2008 Regional-Level Summary for Oregon**

## Average Before-Tax Cash Price Based on the Purchase of 600 Gallons of #2 Marine Diesel



## Regional-Level Summary for Oregon

The ports in Oregon are grouped into two regions:

### Northern Oregon

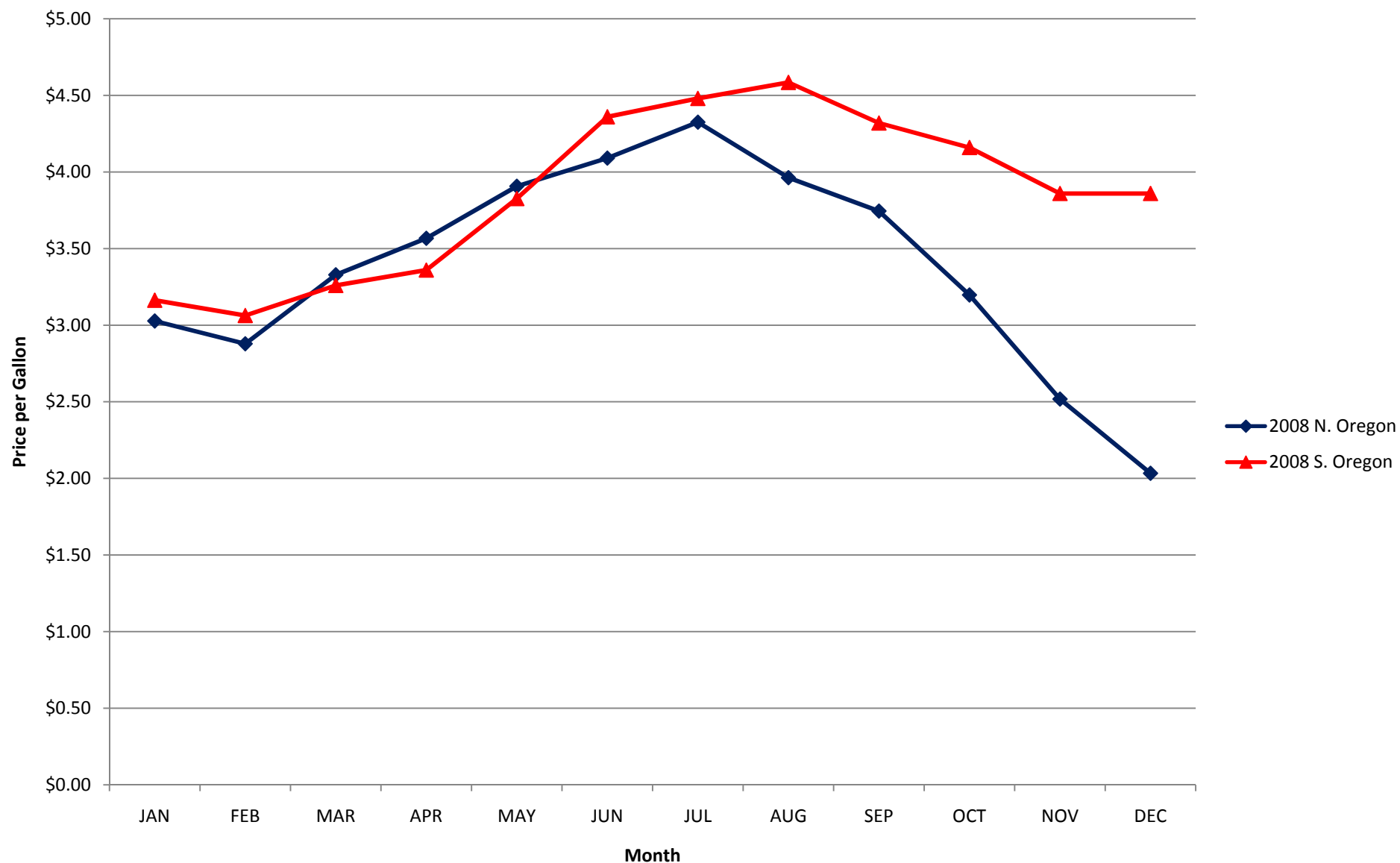
Astoria  
Newport  
Tillamook

### Southern Oregon

Brookings  
Florence  
Gold Beach  
Winchester Bay

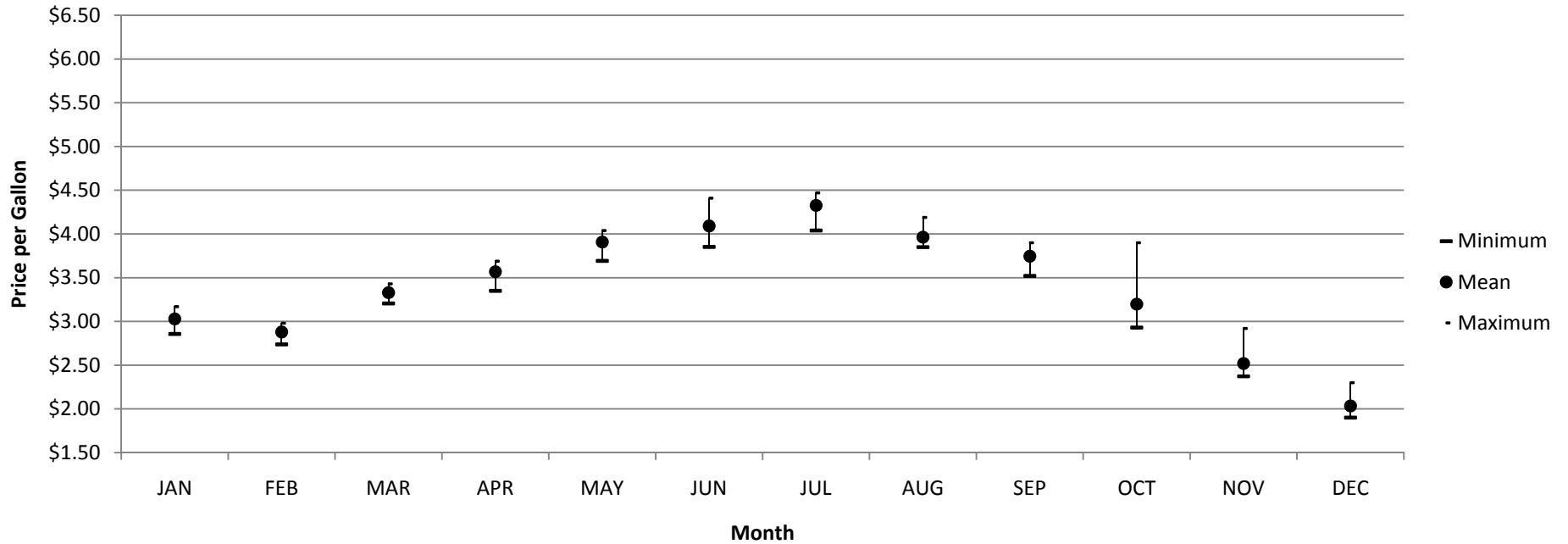
<b>2008</b>	<b>JAN</b>	<b>FEB</b>	<b>MAR</b>	<b>APR</b>	<b>MAY</b>	<b>JUN</b>	<b>JUL</b>	<b>AUG</b>	<b>SEP</b>	<b>OCT</b>	<b>NOV</b>	<b>DEC</b>
<b>Northern Oregon</b>	\$3.028	\$2.879	\$3.329	\$3.567	\$3.907	\$4.090	\$4.325	\$3.963	\$3.745	\$3.198	\$2.518	\$2.034
<b>Southern Oregon</b>	\$3.163	\$3.063	\$3.260	\$3.360	\$3.826	\$4.360	\$4.480	\$4.585	\$4.320	\$4.160	\$3.860	\$3.860
<b>2007</b>	<b>JAN</b>	<b>FEB</b>	<b>MAR</b>	<b>APR</b>	<b>MAY</b>	<b>JUN</b>	<b>JUL</b>	<b>AUG</b>	<b>SEP</b>	<b>OCT</b>	<b>NOV</b>	<b>DEC</b>
<b>Northern Oregon</b>	\$2.402	\$2.357	\$2.370	\$2.418	\$2.470	\$2.471	\$2.397	\$2.643	\$2.509	\$2.714	\$3.123	\$2.872
<b>Southern Oregon</b>	\$2.600	\$2.445	\$2.567	\$2.517	\$2.720	\$2.920	\$2.540	\$2.640	\$2.635	\$2.720	\$2.736	\$3.163
<b>2006</b>	<b>JAN</b>	<b>FEB</b>	<b>MAR</b>	<b>APR</b>	<b>MAY</b>	<b>JUN</b>	<b>JUL</b>	<b>AUG</b>	<b>SEP</b>	<b>OCT</b>	<b>NOV</b>	<b>DEC</b>
<b>Northern Oregon</b>	\$2.104	\$1.964	\$2.414	\$2.257	\$2.767	\$2.702	\$2.512	\$2.787	\$2.739	\$2.126	\$2.207	\$2.582
<b>Southern Oregon</b>	\$2.590	\$2.565	\$2.520	\$2.557	\$2.720	\$2.762	\$2.842	\$2.877	\$2.995	\$2.475	\$2.337	\$2.473

## Average Before-Tax Cash Price Based on the Purchase of 600 Gallons of #2 Marine Diesel



## 2008 Northern Oregon

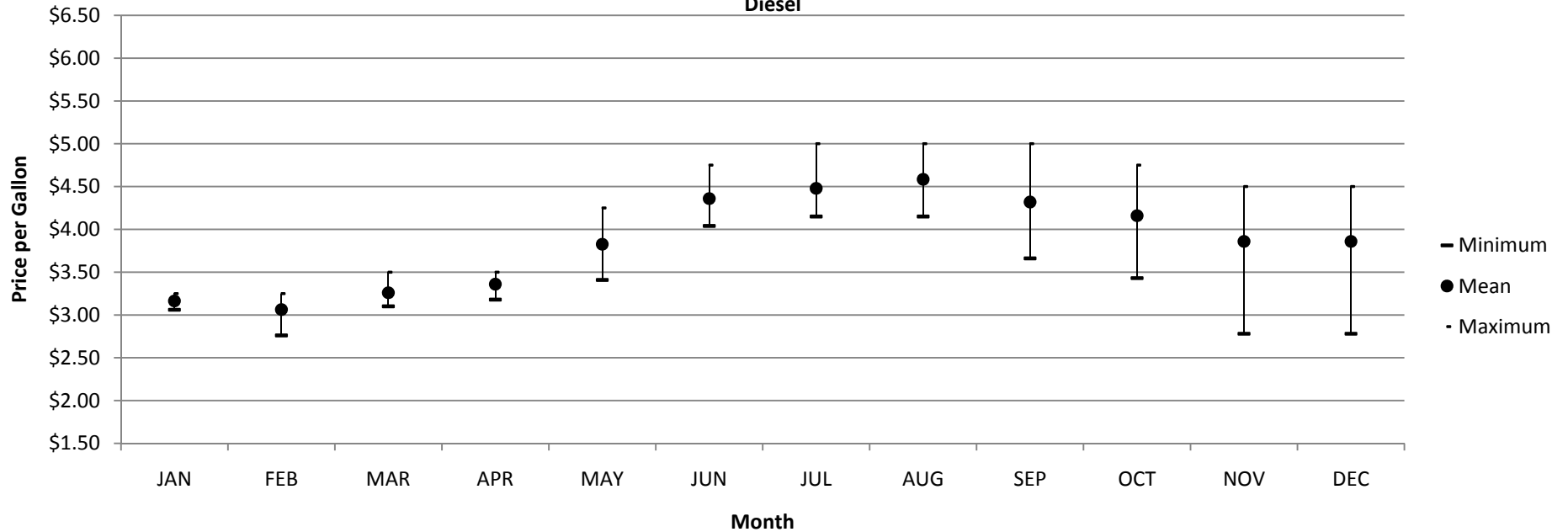
2008 Northern Oregon Monthly Maximum, Mean, Minimum Before-Tax Cash Price Based on the Purchase of 600 Gallons of #2 Marine Diesel



Month	Minimum	Mean	Maximum	Standard Deviation	Number of Fuel Suppliers Responding
JAN	\$2.857	\$3.028	\$3.170	\$0.139	4
FEB	\$2.737	\$2.879	\$2.980	\$0.110	4
MAR	\$3.206	\$3.329	\$3.430	\$0.093	4
APR	\$3.350	\$3.567	\$3.689	\$0.153	4
MAY	\$3.692	\$3.907	\$4.039	\$0.188	3
JUN	\$3.852	\$4.090	\$4.410	\$0.233	4
JUL	\$4.040	\$4.325	\$4.470	\$0.194	4
AUG	\$3.850	\$3.963	\$4.190	\$0.154	4
SEP	\$3.520	\$3.745	\$3.900	\$0.160	4
OCT	\$2.930	\$3.198	\$3.900	\$0.470	4
NOV	\$2.372	\$2.518	\$2.920	\$0.268	4
DEC	\$1.900	\$2.034	\$2.300	\$0.187	4

## 2008 Southern Oregon

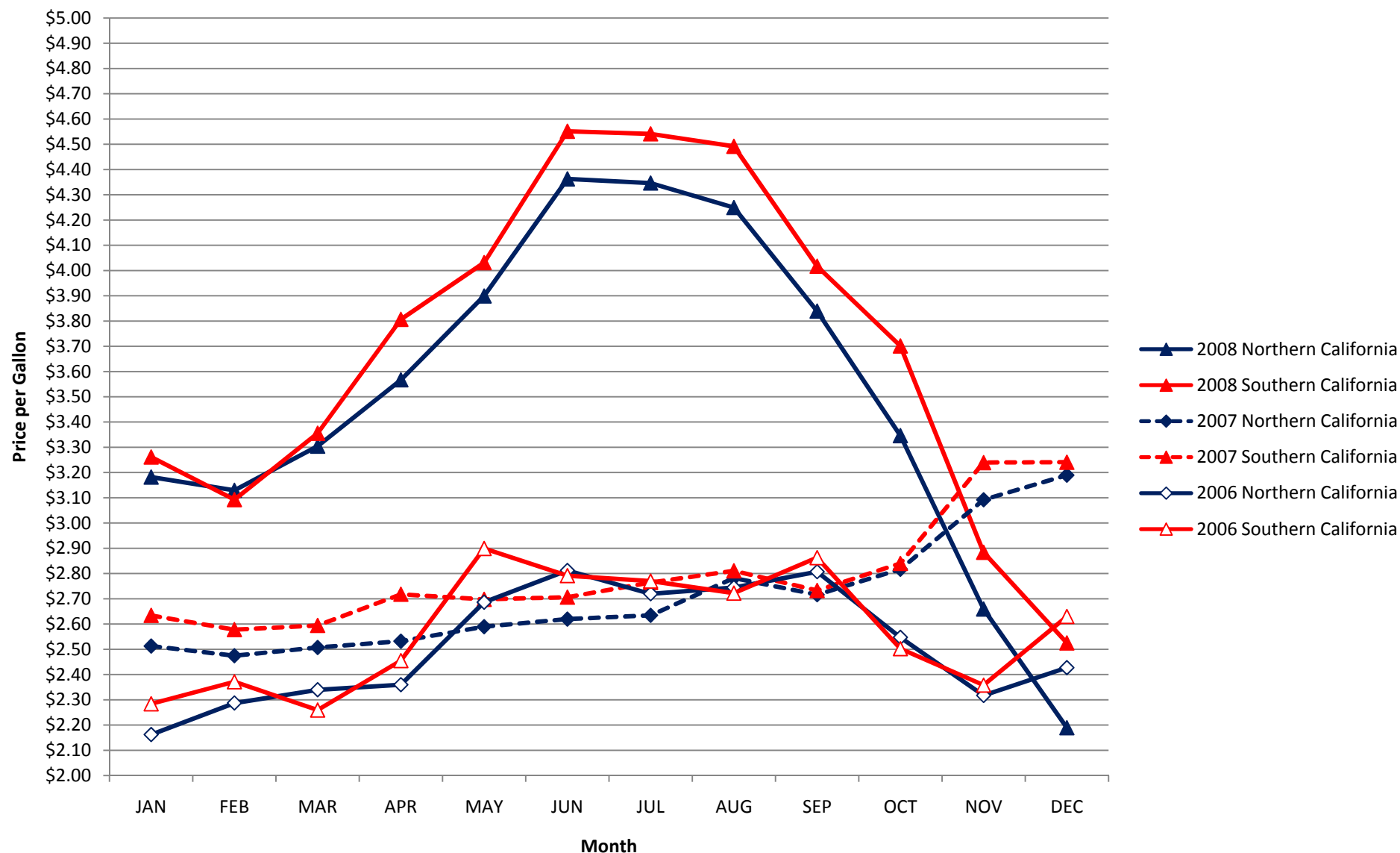
2008 Southern Oregon Monthly Maximum, Mean, Minimum Before-Tax Cash Price Based on the Purchase of 600 Gallons of #2 Marine Diesel



Month	Minimum	Mean	Maximum	Standard Deviation	Number of Fuel Suppliers Responding
JAN	\$3.060	\$3.163	\$3.250	\$0.096	3
FEB	\$2.760	\$3.063	\$3.250	\$0.265	3
MAR	\$3.100	\$3.260	\$3.500	\$0.212	3
APR	\$3.179	\$3.360	\$3.500	\$0.164	3
MAY	\$3.409	\$3.826	\$4.250	\$0.421	3
JUN	\$4.040	\$4.360	\$4.750	\$0.360	3
JUL	\$4.150	\$4.480	\$5.000	\$0.456	3
AUG	\$4.150	\$4.585	\$5.000	\$0.423	4
SEP	\$3.660	\$4.320	\$5.000	\$0.670	3
OCT	\$3.430	\$4.160	\$4.750	\$0.671	3
NOV	\$2.780	\$3.860	\$4.500	\$0.940	3
DEC	\$2.780	\$3.860	\$4.500	\$0.940	3

## **2006-2008 Regional-Level Summary for California**

## Average Before-Tax Cash Price Based on the Purchase of 600 Gallons of #2 Marine Diesel



## Regional-Level Summary for California

The ports in California are grouped into two regions:

### Northern California

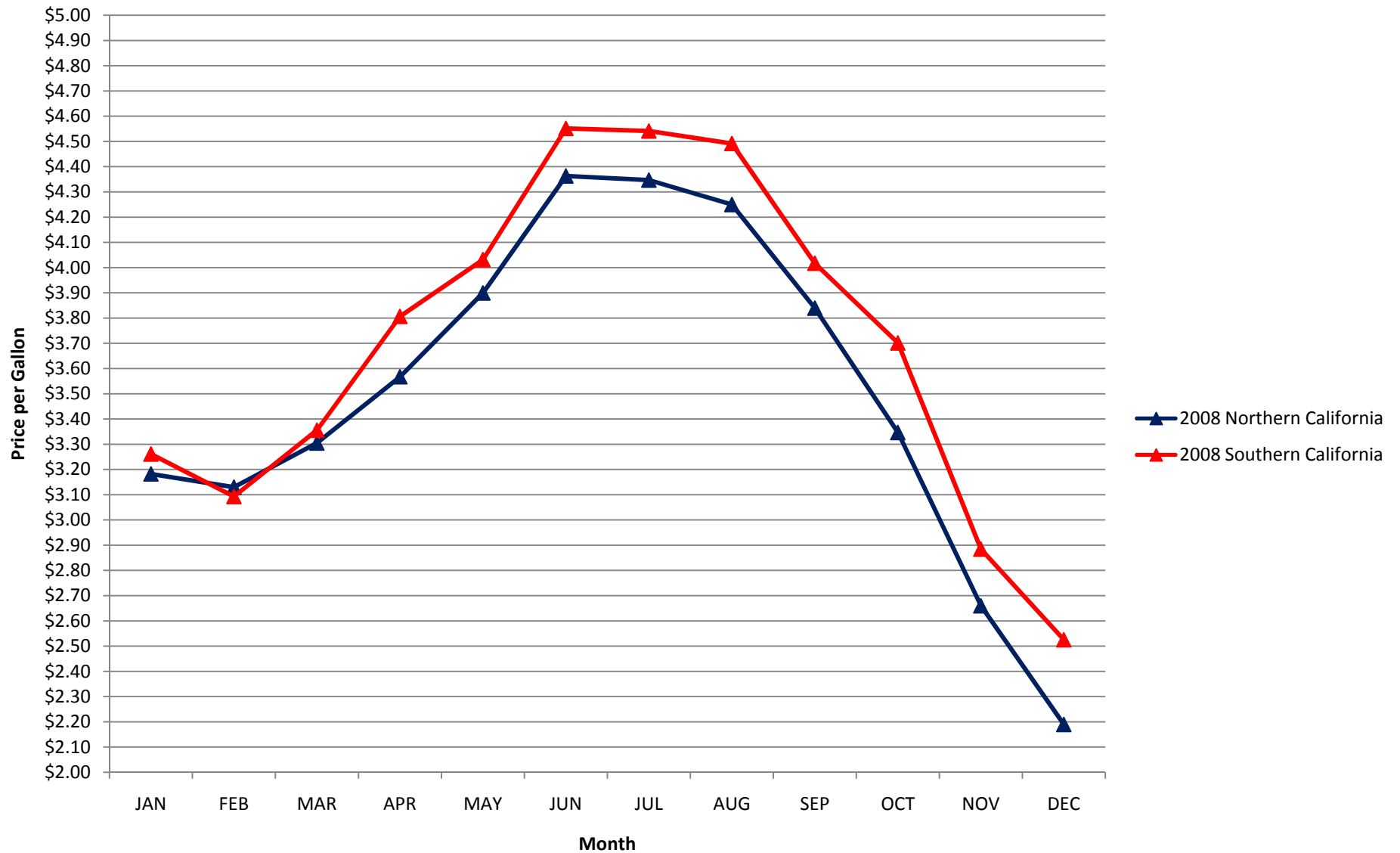
Bodega Bay  
Crescent City  
Eureka  
Fort Bragg

### Southern California

Morro Bay  
Moss Landing  
Port Hueneme  
San Francisco  
San Pedro  
Santa Barbara  
Sausalito

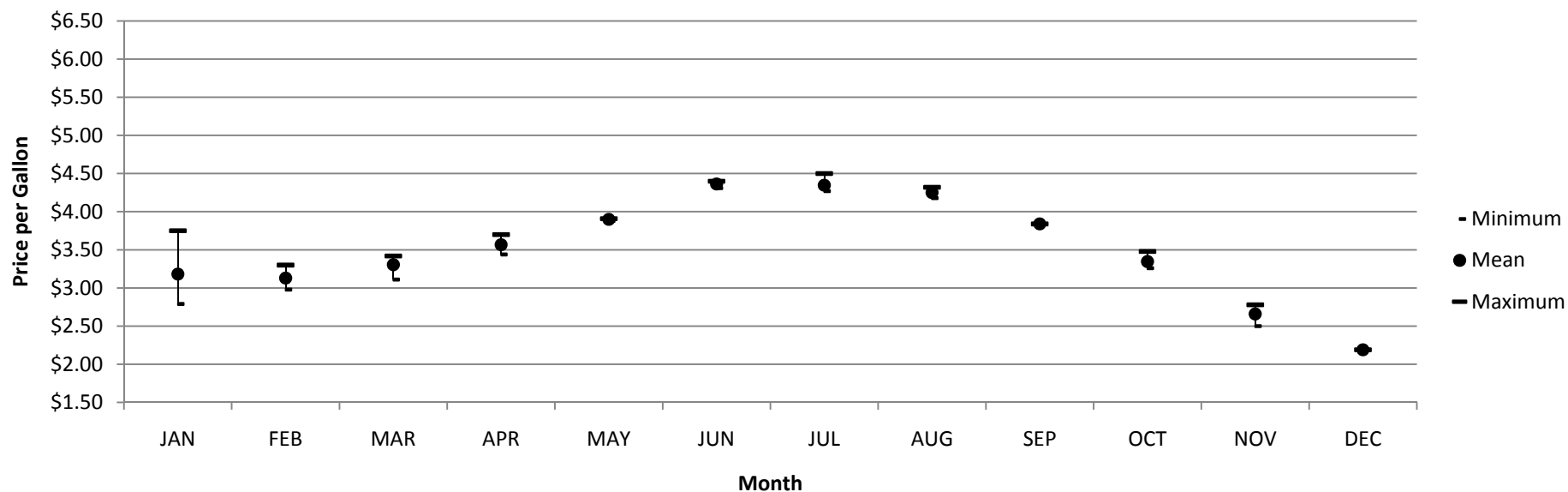
<b>2008</b>	<b>JAN</b>	<b>FEB</b>	<b>MAR</b>	<b>APR</b>	<b>MAY</b>	<b>JUN</b>	<b>JUL</b>	<b>AUG</b>	<b>SEP</b>	<b>OCT</b>	<b>NOV</b>	<b>DEC</b>
<b>Northern California</b>	\$3.182	\$3.130	\$3.305	\$3.567	\$3.899	\$4.363	\$4.347	\$4.250	\$3.840	\$3.346	\$2.660	\$2.190
<b>Southern California</b>	\$3.261	\$3.093	\$3.356	\$3.807	\$4.031	\$4.552	\$4.541	\$4.492	\$4.017	\$3.701	\$2.884	\$2.525
<b>2007</b>	<b>JAN</b>	<b>FEB</b>	<b>MAR</b>	<b>APR</b>	<b>MAY</b>	<b>JUN</b>	<b>JUL</b>	<b>AUG</b>	<b>SEP</b>	<b>OCT</b>	<b>NOV</b>	<b>DEC</b>
<b>Northern California</b>	\$2.513	\$2.475	\$2.507	\$2.532	\$2.590	\$2.620	\$2.635	\$2.782	\$2.716	\$2.817	\$3.092	\$3.190
<b>Southern California</b>	\$2.634	\$2.578	\$2.594	\$2.718	\$2.698	\$2.706	\$2.764	\$2.811	\$2.733	\$2.840	\$3.240	\$3.241
<b>2006</b>	<b>JAN</b>	<b>FEB</b>	<b>MAR</b>	<b>APR</b>	<b>MAY</b>	<b>JUN</b>	<b>JUL</b>	<b>AUG</b>	<b>SEP</b>	<b>OCT</b>	<b>NOV</b>	<b>DEC</b>
<b>Northern California</b>	\$2.162	\$2.287	\$2.340	\$2.360	\$2.686	\$2.812	\$2.720	\$2.745	\$2.807	\$2.547	\$2.317	\$2.427
<b>Southern California</b>	\$2.284	\$2.371	\$2.259	\$2.455	\$2.899	\$2.792	\$2.770	\$2.722	\$2.863	\$2.502	\$2.358	\$2.630

## Average Before-Tax Cash Price Based on the Purchase of 600 Gallons of #2 Marine Diesel



## 2008 Northern California

2008 Northern California Monthly Maximum, Mean, Minimum Before-Tax Cash Price Based on the Purchase of 600 Gallons of #2 Marine Diesel

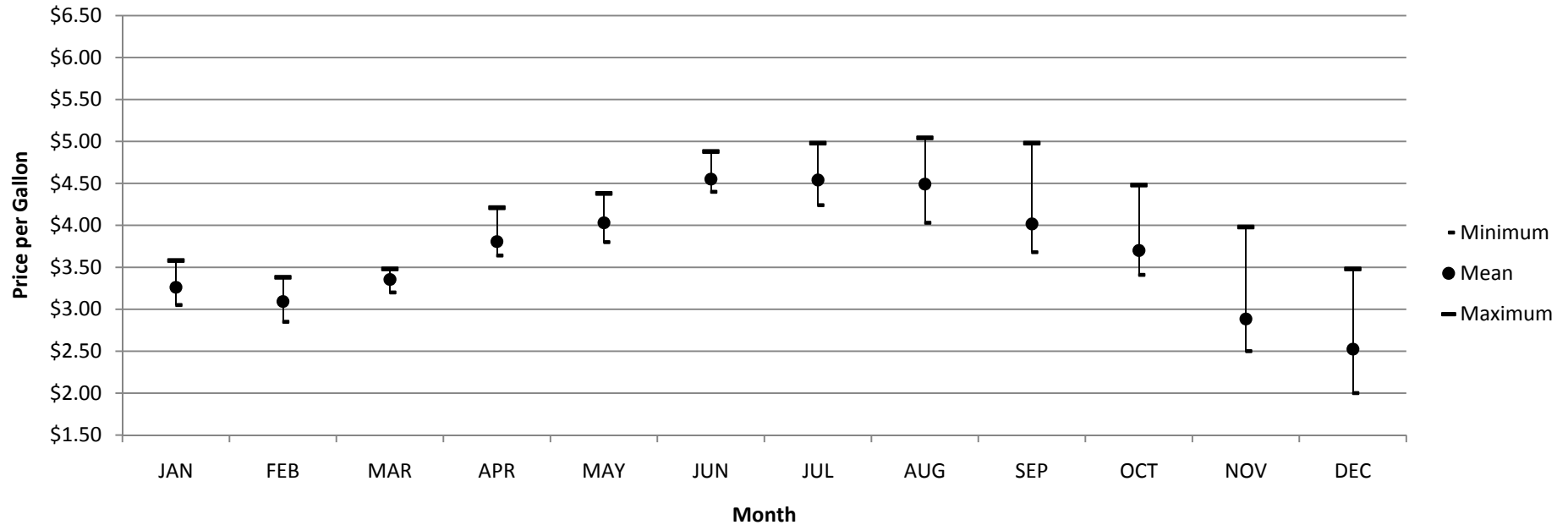


Month	Minimum	Mean	Maximum	Standard Deviation	Number of Fuel Suppliers Responding
JAN	\$2.790	\$3.182	\$3.750	\$0.405	4
FEB	\$2.979	\$3.130	\$3.300	\$0.161	3
MAR	\$3.110	\$3.305	\$3.419	\$0.142	4
APR	\$3.440	\$3.567	\$3.700	\$0.141	4
MAY	\$3.880	\$3.899	\$3.909	\$0.017	3
JUN	\$4.310	\$4.363	\$4.400	\$0.047	3
JUL	\$4.270	\$4.347	\$4.500	\$0.133	3
AUG	\$4.179	\$4.250	\$4.320	\$0.071	3
SEP	**	\$3.840	**	**	2
OCT	\$3.260	\$3.346	\$3.479	\$0.117	3
NOV	\$2.500	\$2.660	\$2.779	\$0.144	3
DEC	**	\$2.190	**	**	2

\*\* data not reported for confidentiality, less than 3 suppliers reporting

## 2008 Southern California

2008 Southern California Monthly Maximum, Mean, Minimum Before-Tax Cash Price Based on the Purchase of 600 Gallons of #2 Marine Diesel



Month	Minimum	Mean	Maximum	Standard Deviation	Number of Fuel Suppliers Responding
JAN	\$3.050	\$3.261	\$3.580	\$0.181	7
FEB	\$2.850	\$3.093	\$3.380	\$0.210	7
MAR	\$3.200	\$3.356	\$3.480	\$0.127	7
APR	\$3.640	\$3.807	\$4.210	\$0.236	6
MAY	\$3.800	\$4.031	\$4.380	\$0.210	7
JUN	\$4.400	\$4.552	\$4.880	\$0.192	6
JUL	\$4.240	\$4.541	\$4.980	\$0.270	7
AUG	\$4.030	\$4.492	\$5.043	\$0.411	7
SEP	\$3.680	\$4.017	\$4.980	\$0.436	7
OCT	\$3.410	\$3.701	\$4.480	\$0.376	7
NOV	\$2.500	\$2.884	\$3.980	\$0.495	7
DEC	\$2.000	\$2.525	\$3.480	\$0.484	7