



Status of Steelhead in Oregon

Jamie Anthony
Oregon Dept. Fish & Wildlife
December 9, 2025





Distinct Population Segments

- Oregon Coast
- Southwest Washington
- Klamath Mountains
- Upper Willamette
- Lower Columbia
- Middle Columbia
- Snake River

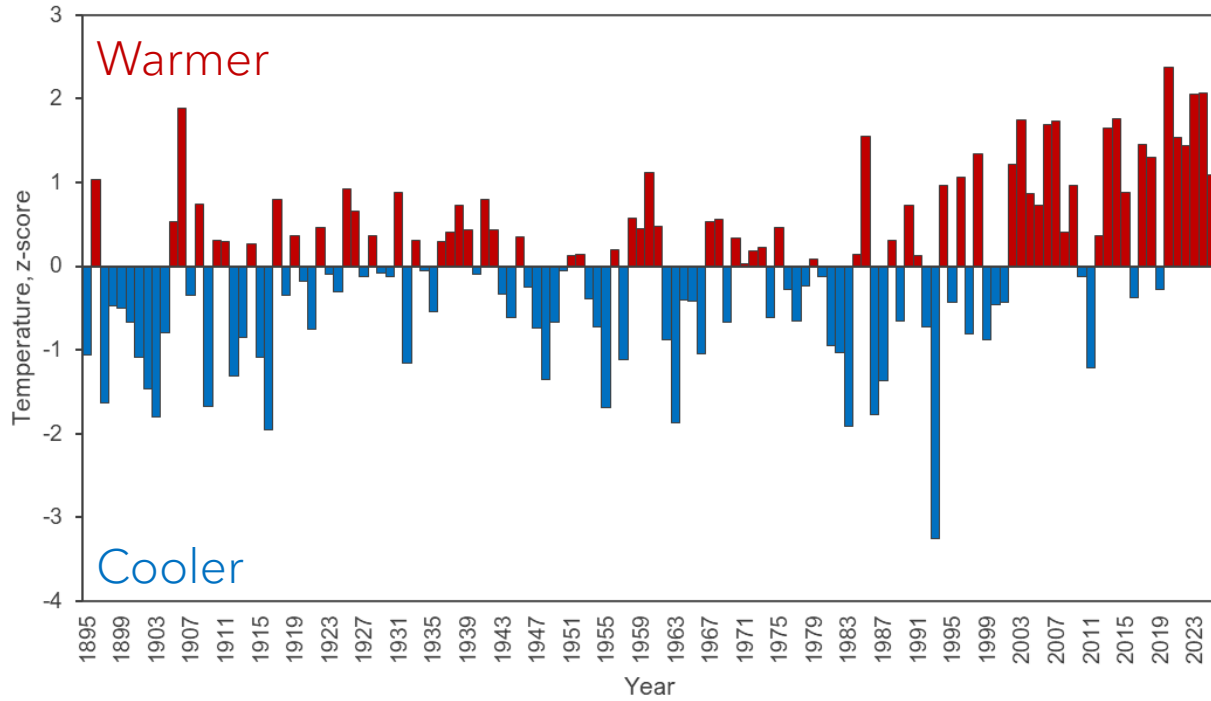




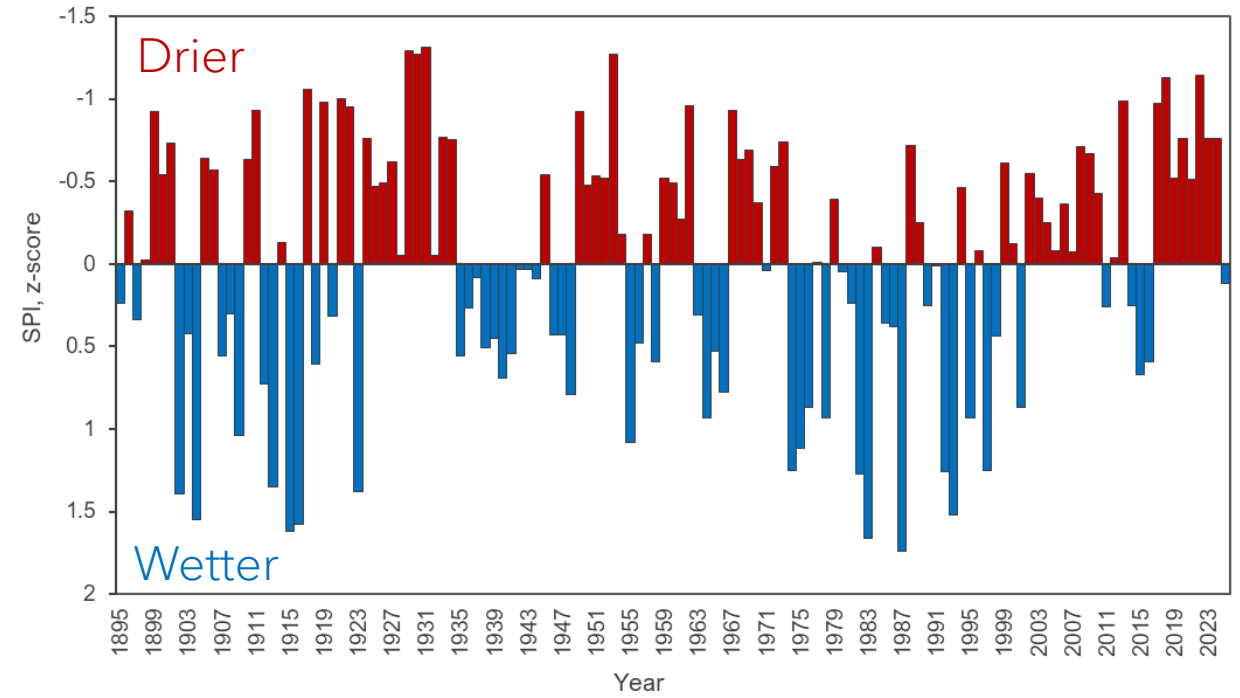
Freshwater Conditions

Temperatures & Precipitation

Oregon Air Temperature, July



Standardized Precipitation Index, July





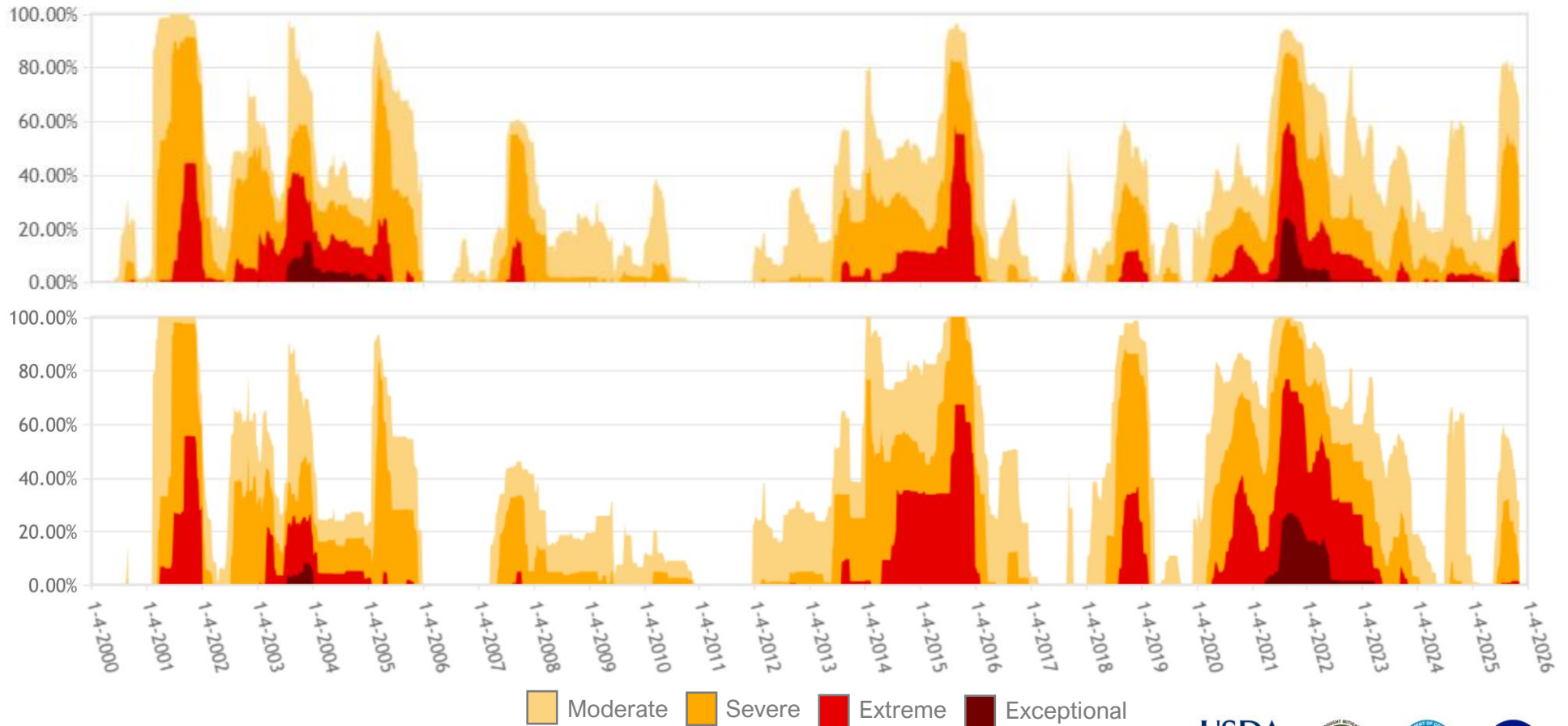
Freshwater Conditions

Drought

Percent of Area in U.S. Drought Monitor Categories

Pacific Northwest

Oregon



From the U.S. Drought Monitor website, <https://droughtmonitor.unl.edu/DmData/TimeSeries.aspx>, 11-17-2025

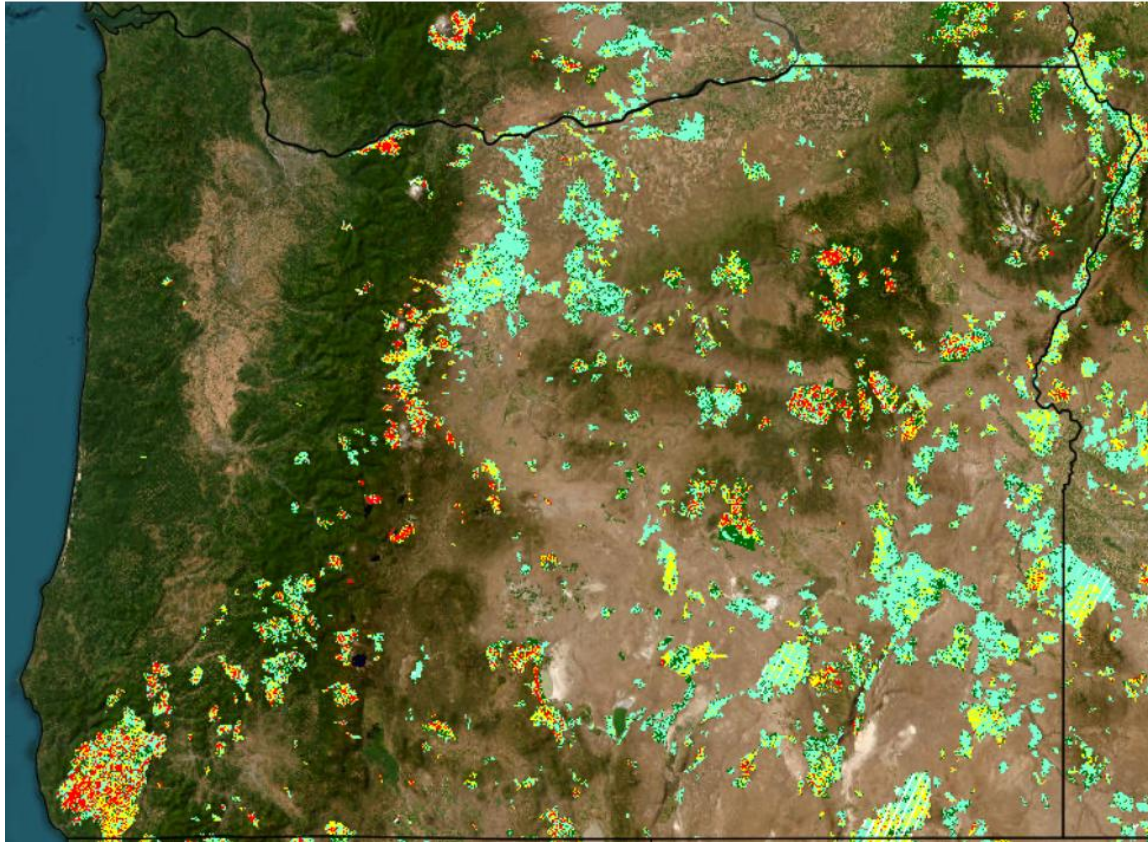




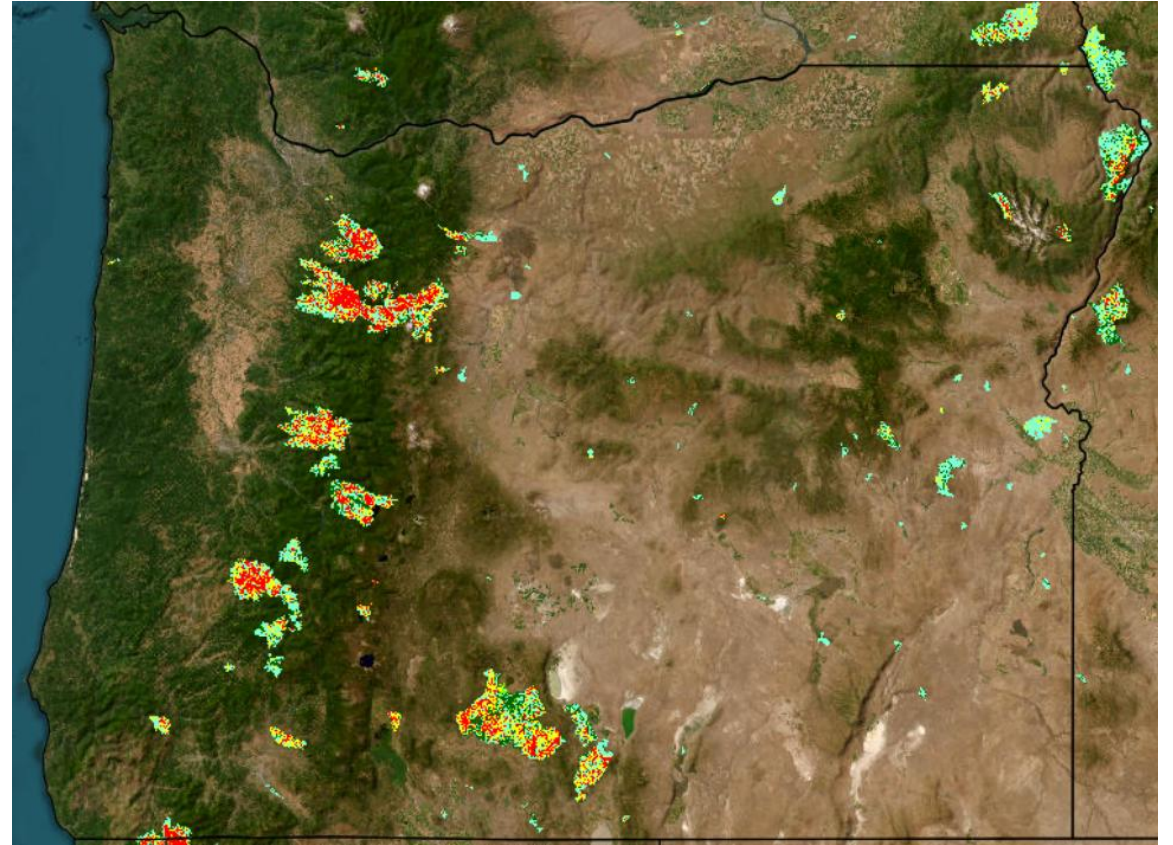
Freshwater Conditions

Wildfire - Burn Severity

1984-2019
35 Years



2020-2024
5 Years

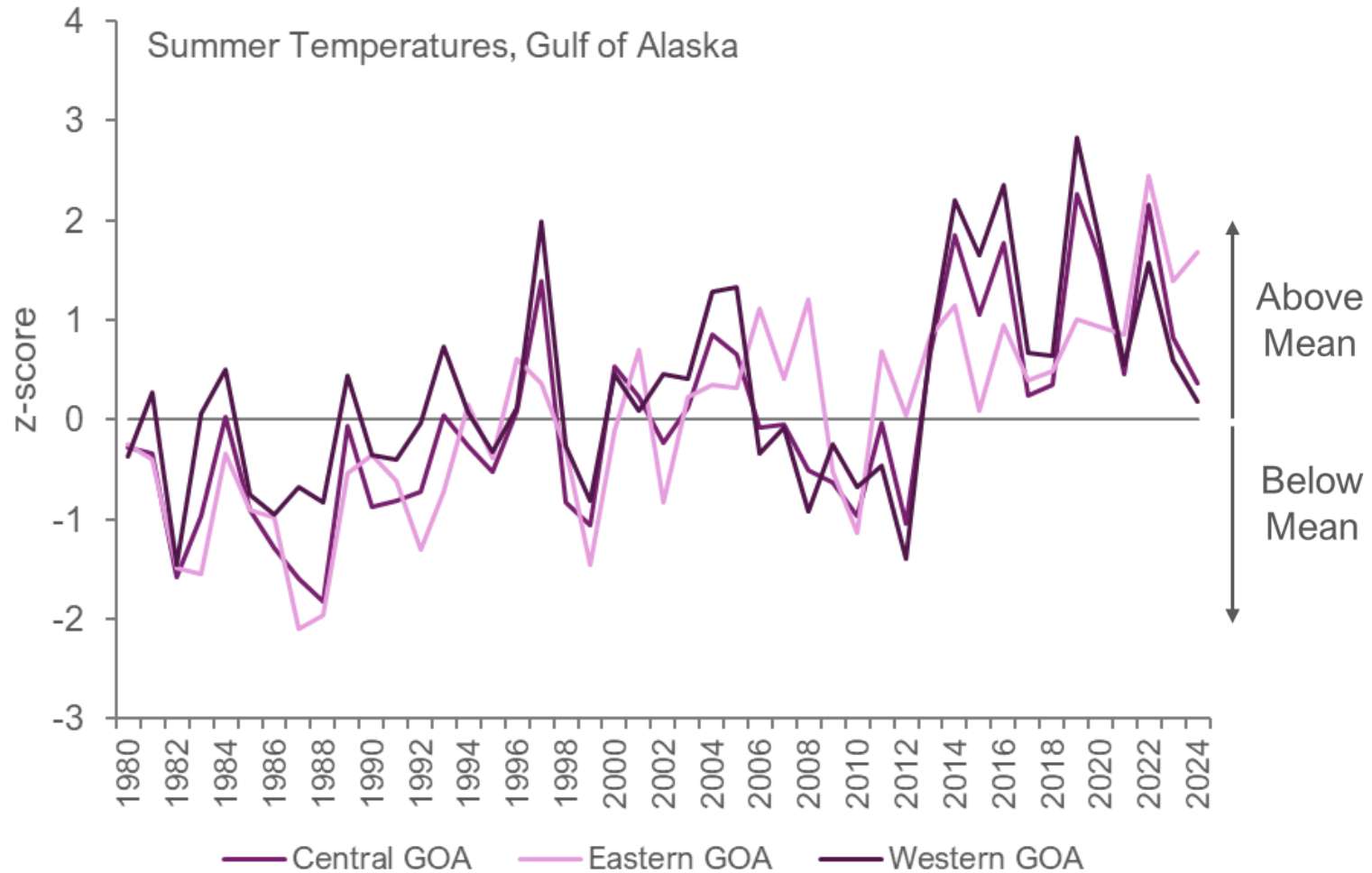


Data: <https://burnseverity.cr.usgs.gov/viewer/?product=BAER>



Ocean Conditions

North Pacific Sea Surface Temperatures



Data: NOAA ERSSTv5

GOA Area Delineations: Ohlberger et al. *Fish and Fisheries*, 26(3):331-345. <https://doi.org/10.1111/faf.12878>



Ocean Conditions

North Pacific Gyre Oscillation Index

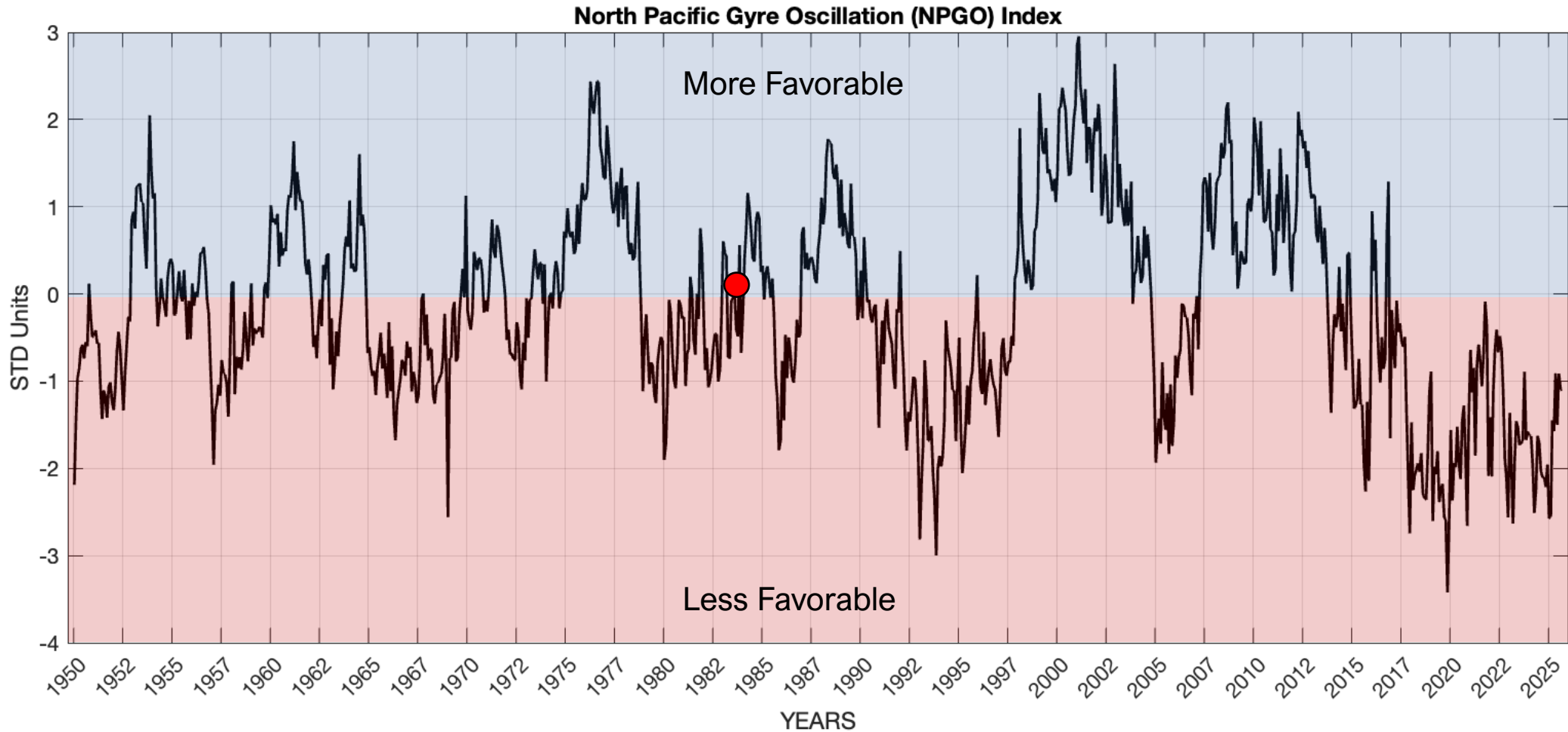
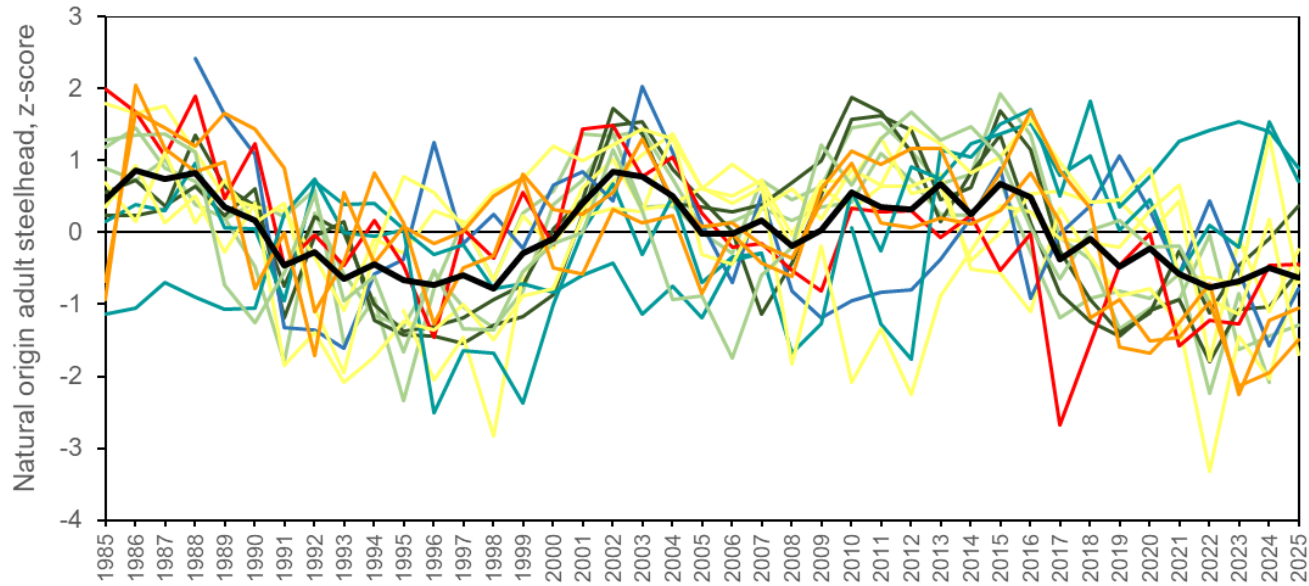


Figure: <https://www.o3d.org/npgo/>



Abundance Trends

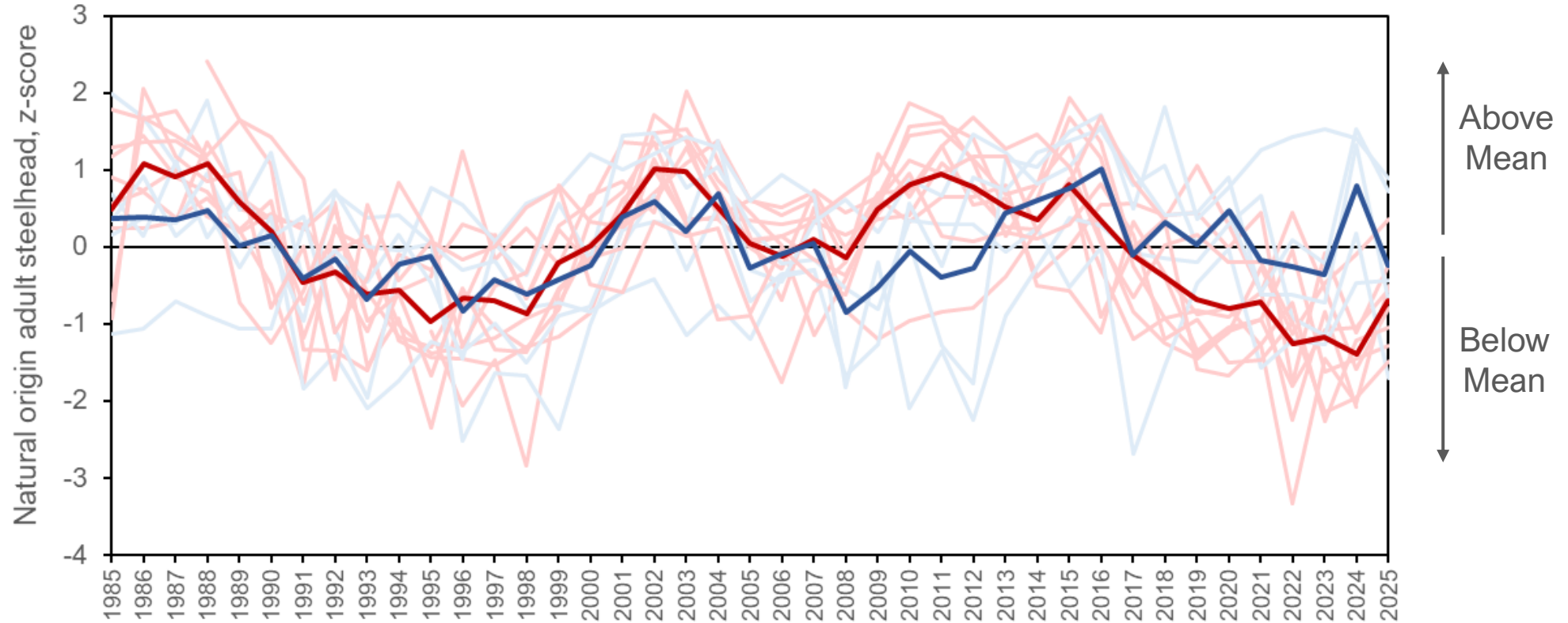
An aggregated look





Abundance Trends

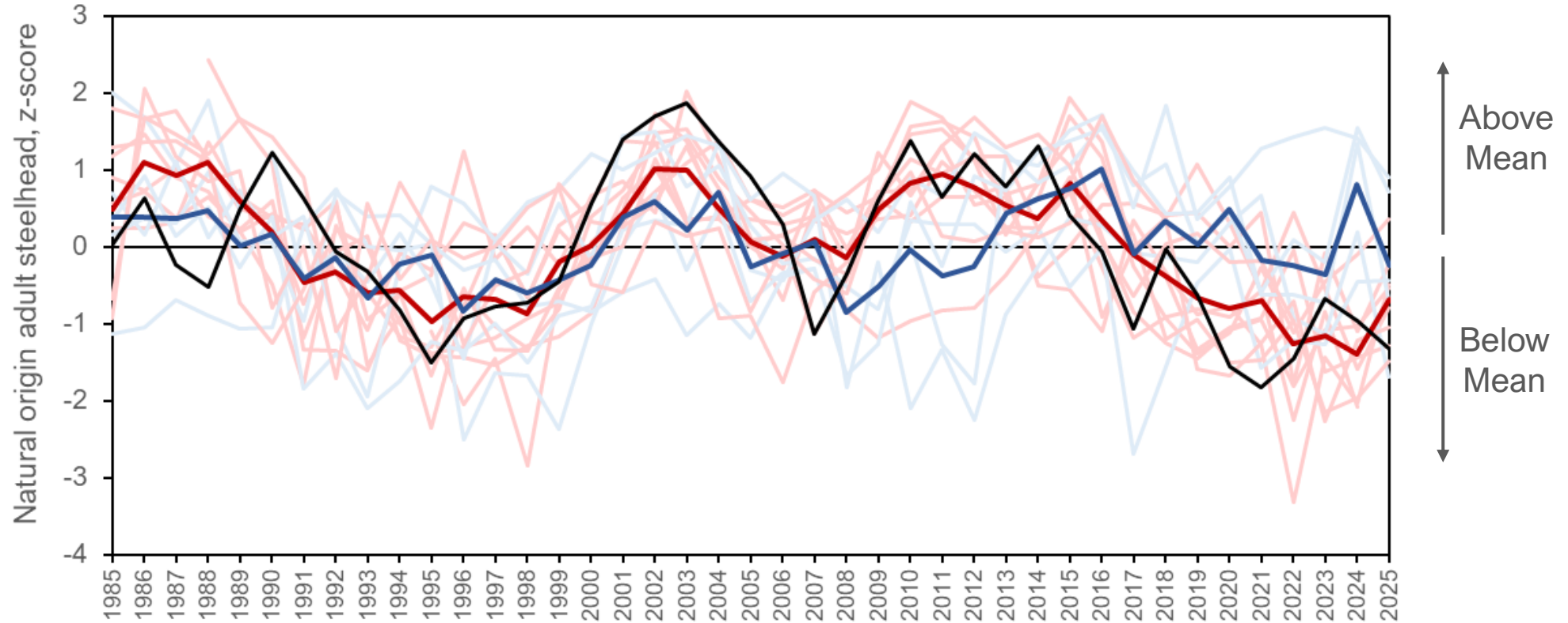
An aggregated look - winters & summers





Abundance Trends

An aggregated look - winters & summers & NPGO

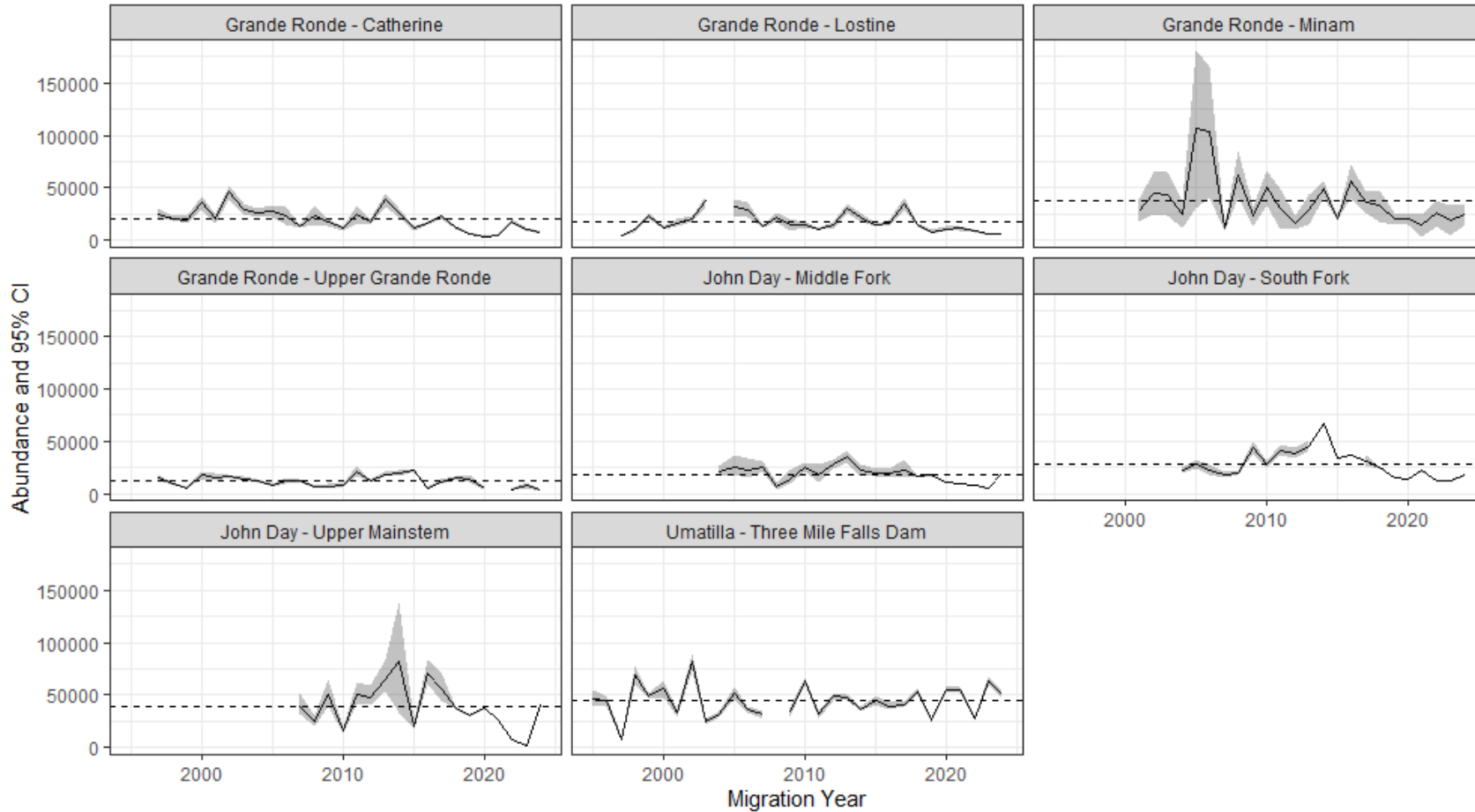




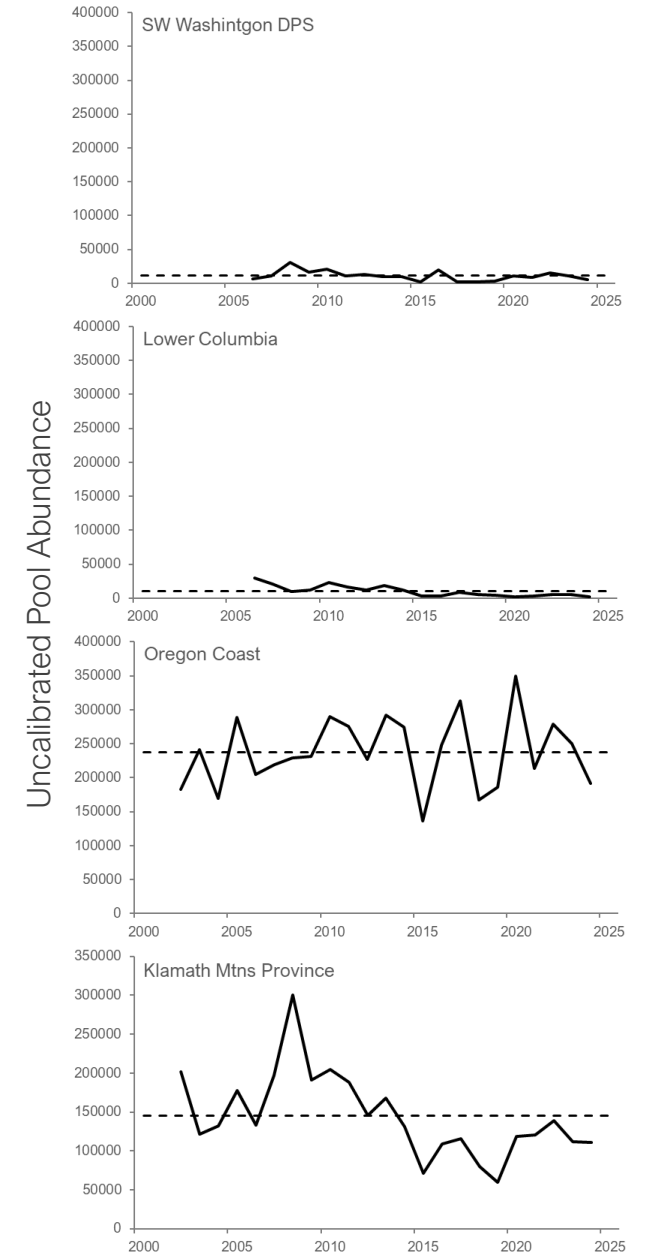
Abundance Trends

Juveniles

Mid-Columbia & Snake Out-Migrants



Lower Columbia & Coast Parr





Steelhead Fisheries in Oregon

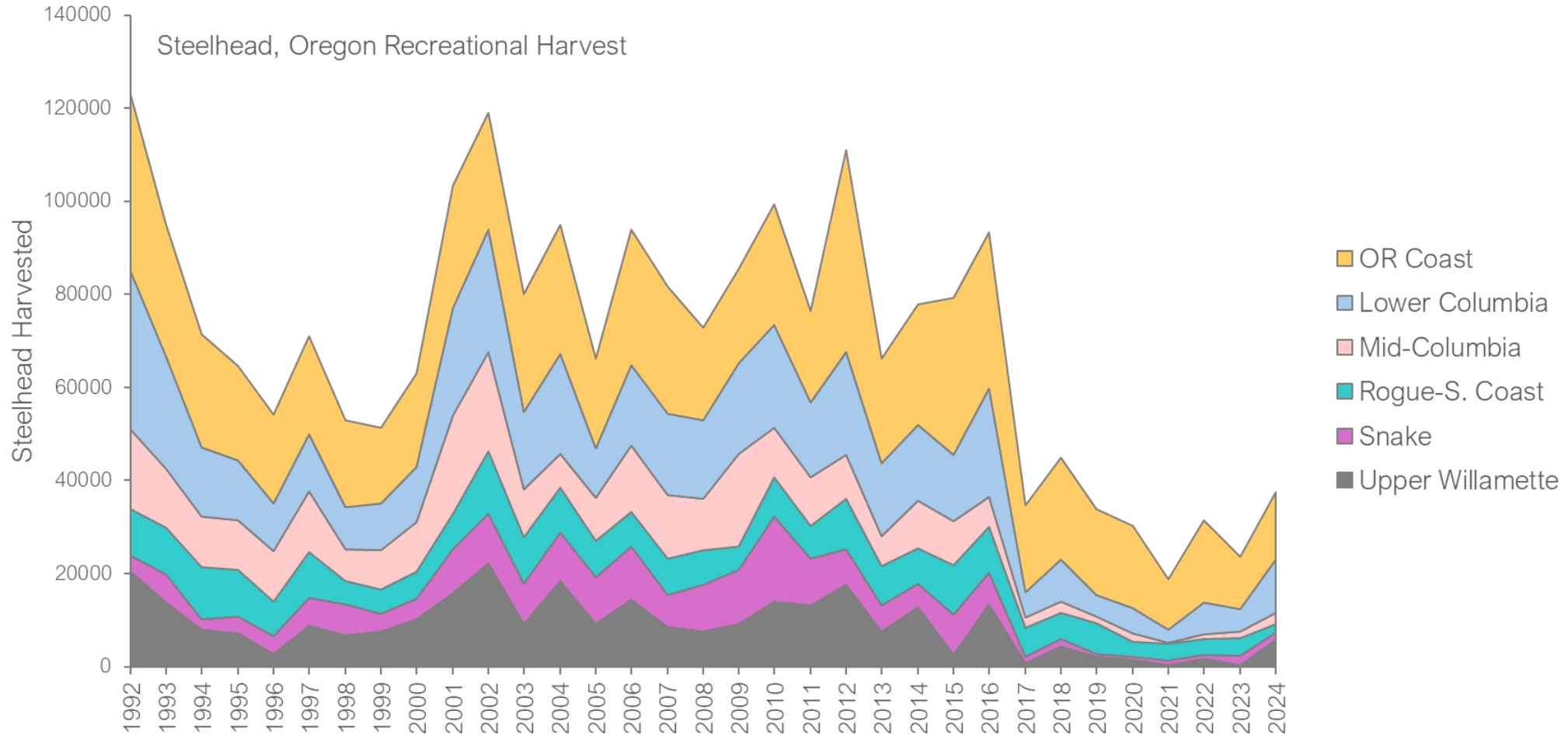
- Limited Wild Harvest Opportunity
 - No directed ocean commercial fisheries
 - No direct recreational harvest of wild summer steelhead
 - Limited recreational harvest of wild winter steelhead in certain areas on the coast

Utilization is dependent on the health of wild populations.

Angler engagement is a critical conservation tool.



Harvest Trends



*Primarily Hatchery Fish after 1991

- Lower Abundance
- Conservative Regs & Closures

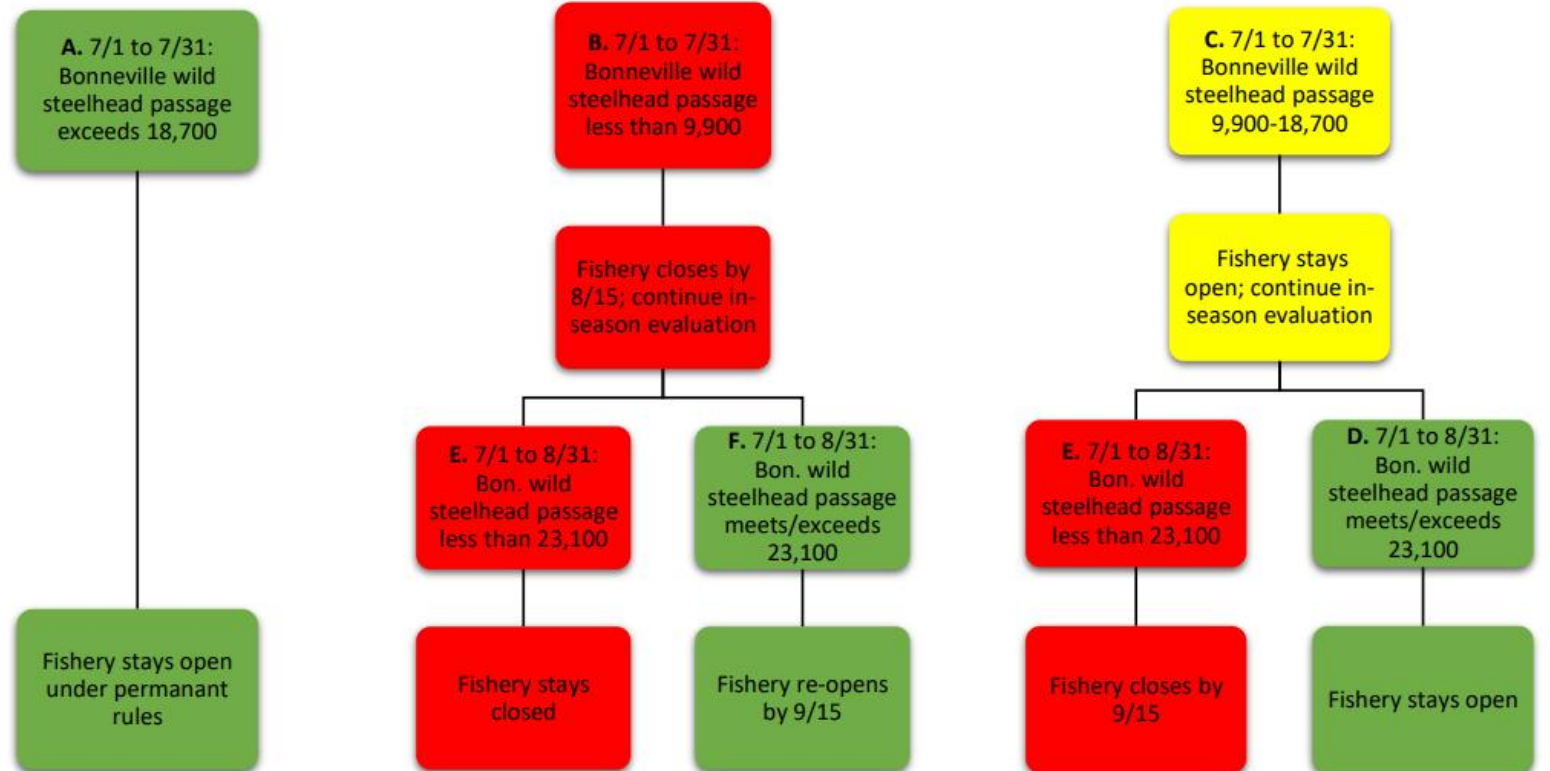


Fishery Management Frameworks

Mid-Columbia and Snake rivers

- Deschutes, John Day, Umatilla/Walla Walla, Grande Ronde/Imnaha basins
- Increased transparency and certainty
- Website for updates

Example: Deschutes





Rogue-South Coast

RSC Validation and Harvest Tag

Rogue-South Coast Steelhead Validation

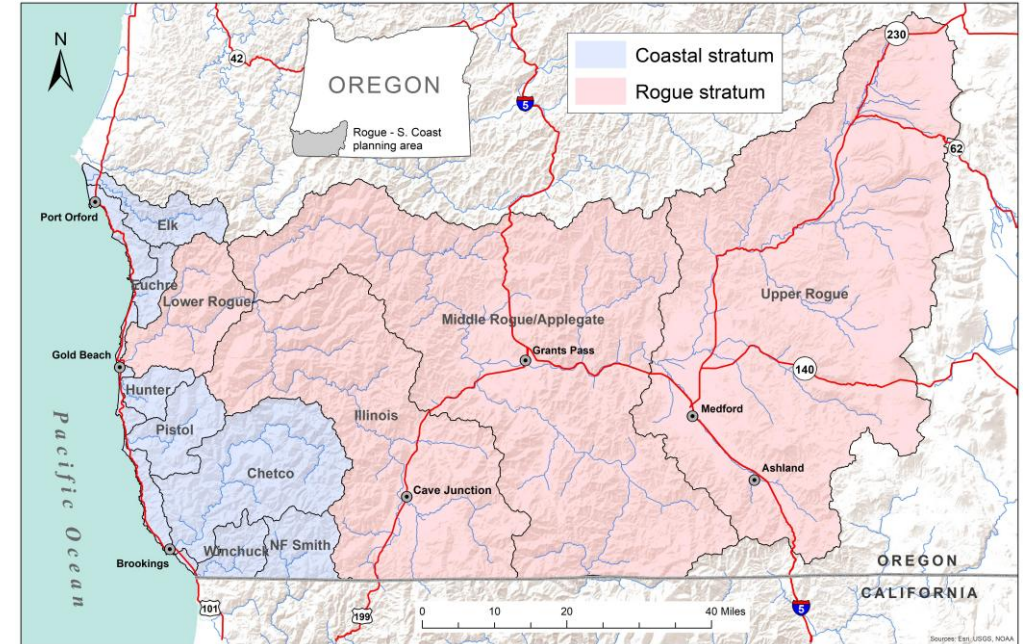
- Required for all winter steelhead anglers fishing in the Rogue Basin or on the south coast, Dec. 1 to April 30.

Rogue-South Coast Wild Steelhead Harvest Tag

- Wild winter steelhead kept are recorded here, *not the statewide combined angling tag*.
- Not needed for catch-and-release or keeping hatchery steelhead only.

Why?

- Improves data to track trends in angling effort and manage impacts of fishing on wild steelhead
- Helps fund wild winter steelhead monitoring





Habitat Actions

Passage Restoration



Klamath Dam Removals



McKay Creek Pilot Project



Smaller Barriers



Habitat Actions

Instream Flows, Cold Water, and Thermal Tolerance



Instream Water Rights



Identifying Cold Water



Thermal Tolerance



Habitat Actions

Restoration

Continued Investment in Habitat Restoration

3-Year Action Plan for Beaver Modified
Landscapes



Difficult
is not
impossible.

We can
do difficult.

Thank You!

