

# Alaska Steelhead Stock Status

Alaska Department of Fish and Game  
Sport Fish Division



10/15/2024

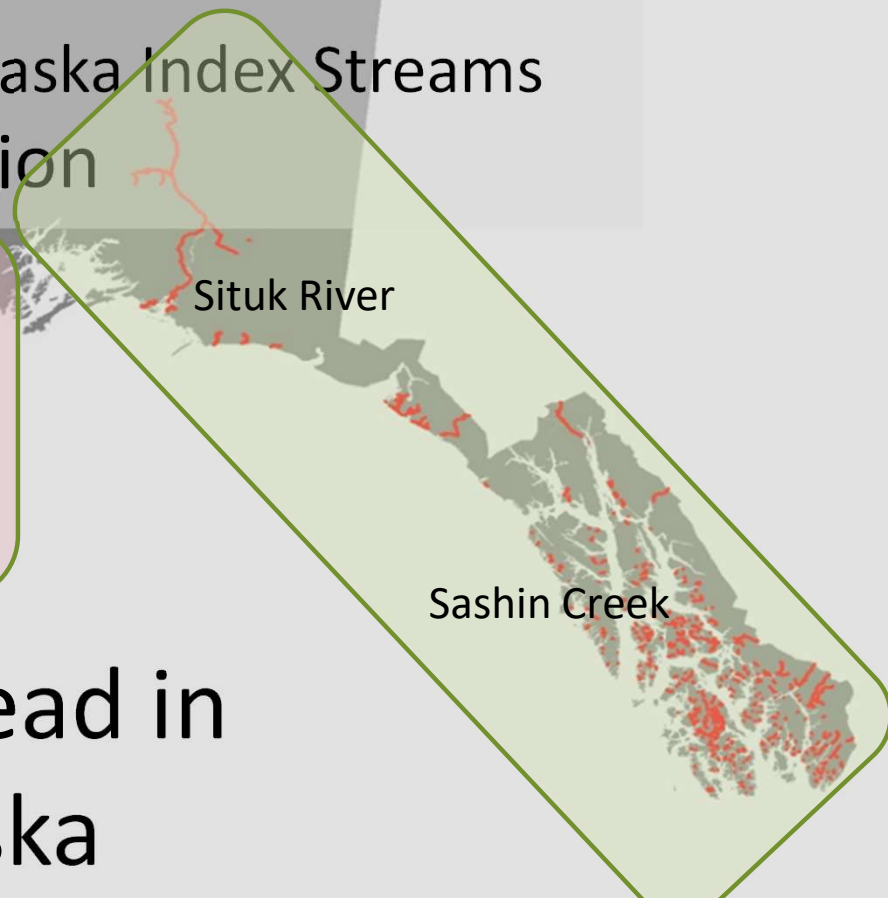
18:11:31.186

x1



# Assessment Methods

- Steelhead Streams
- Weirs
  - Situk River, Sashin Creek
  - Litnik, Karluk, Ayakulik, Dog Salmon, Anchor Rivers
- Snorkel Surveys
  - 10 Southeast Alaska Index Streams
- Fishery Information



## Steelhead in Alaska

# Southeast Alaska Steelhead Distribution



Yakutat

U.S. CANADA

Haines

Juneau

Sitka

Petersburg

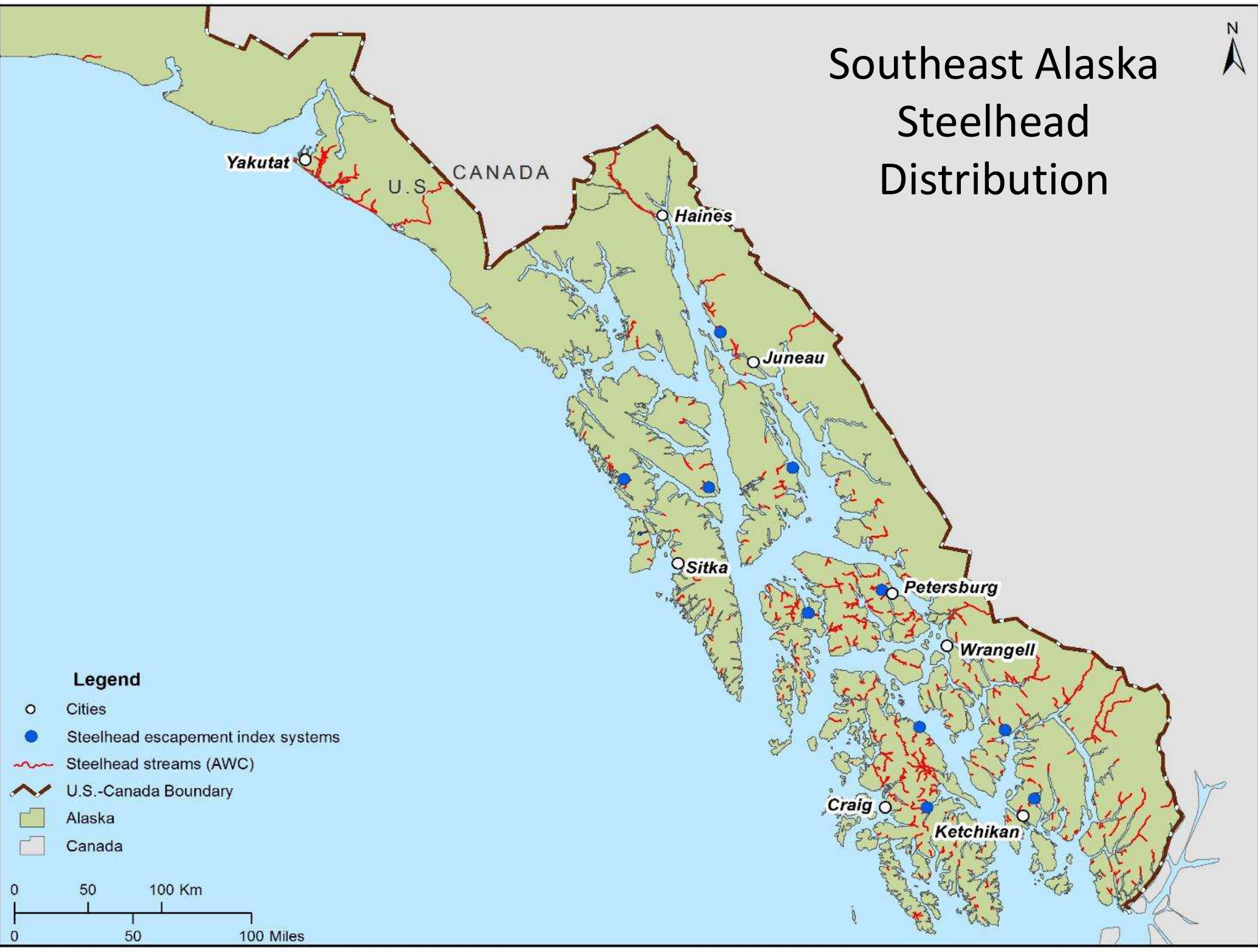
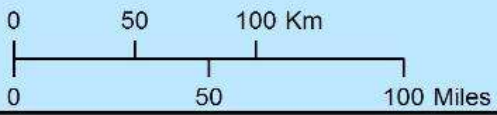
Wrangell

Craig

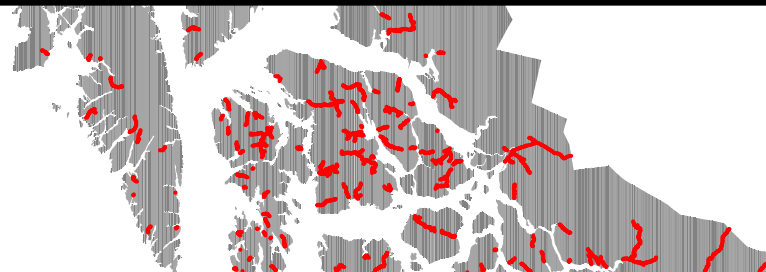
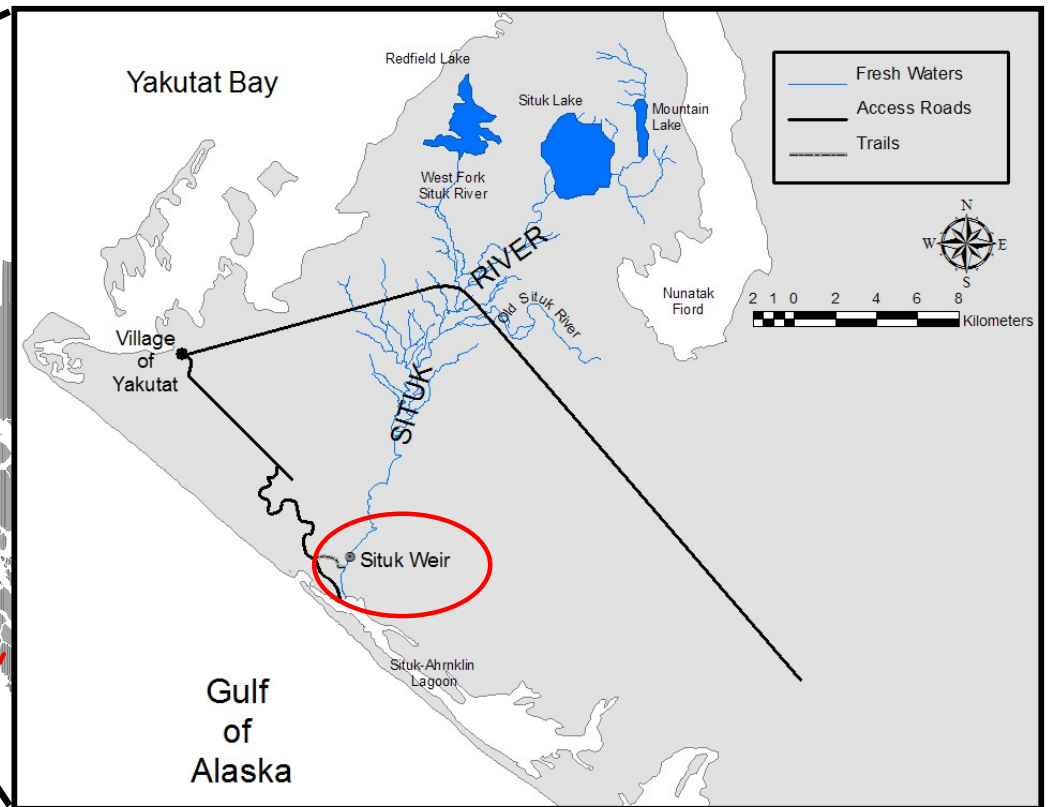
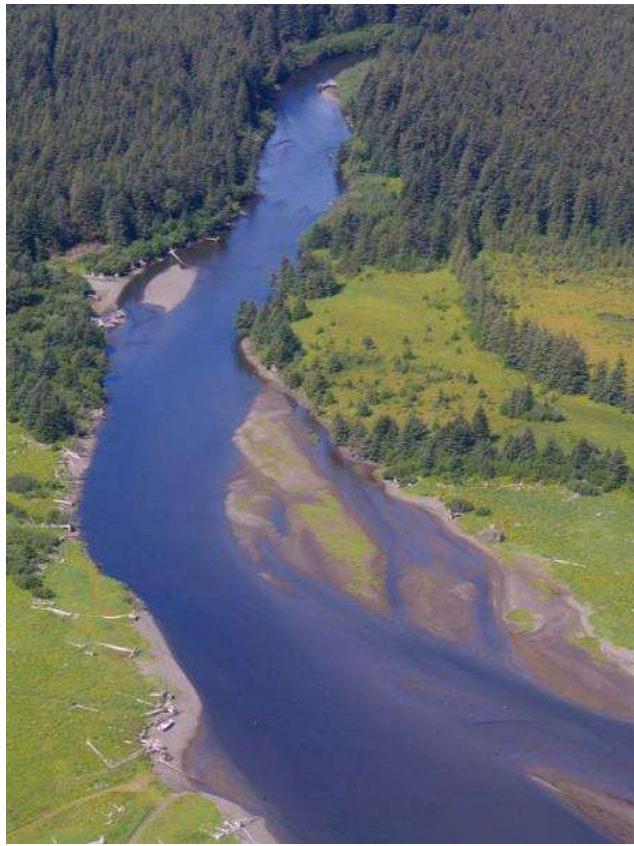
Ketchikan

### Legend

- Cities
- Steelhead escapement index systems
- ~ Steelhead streams (AWC)
- U.S.-Canada Boundary
- Alaska
- Canada

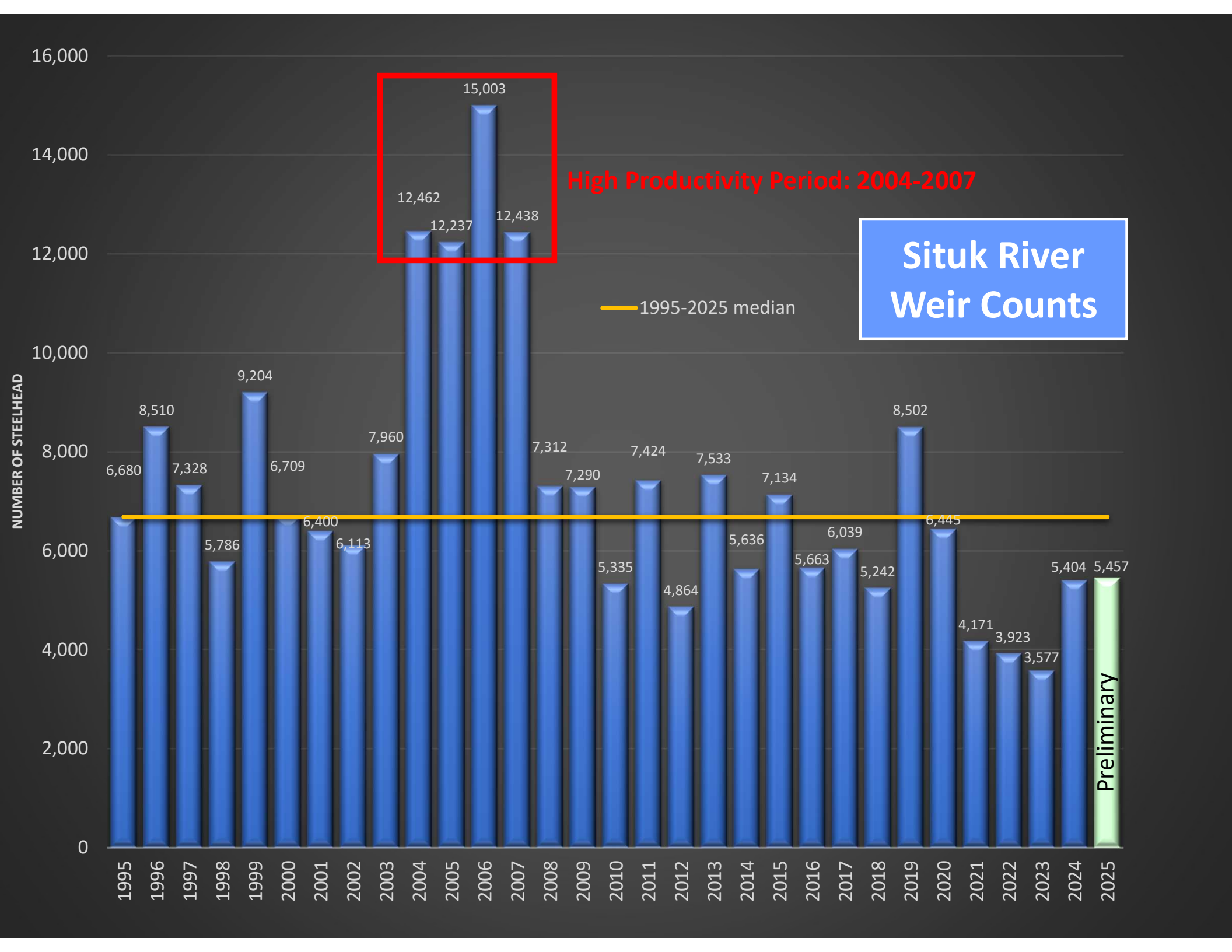


# Situk River Weir

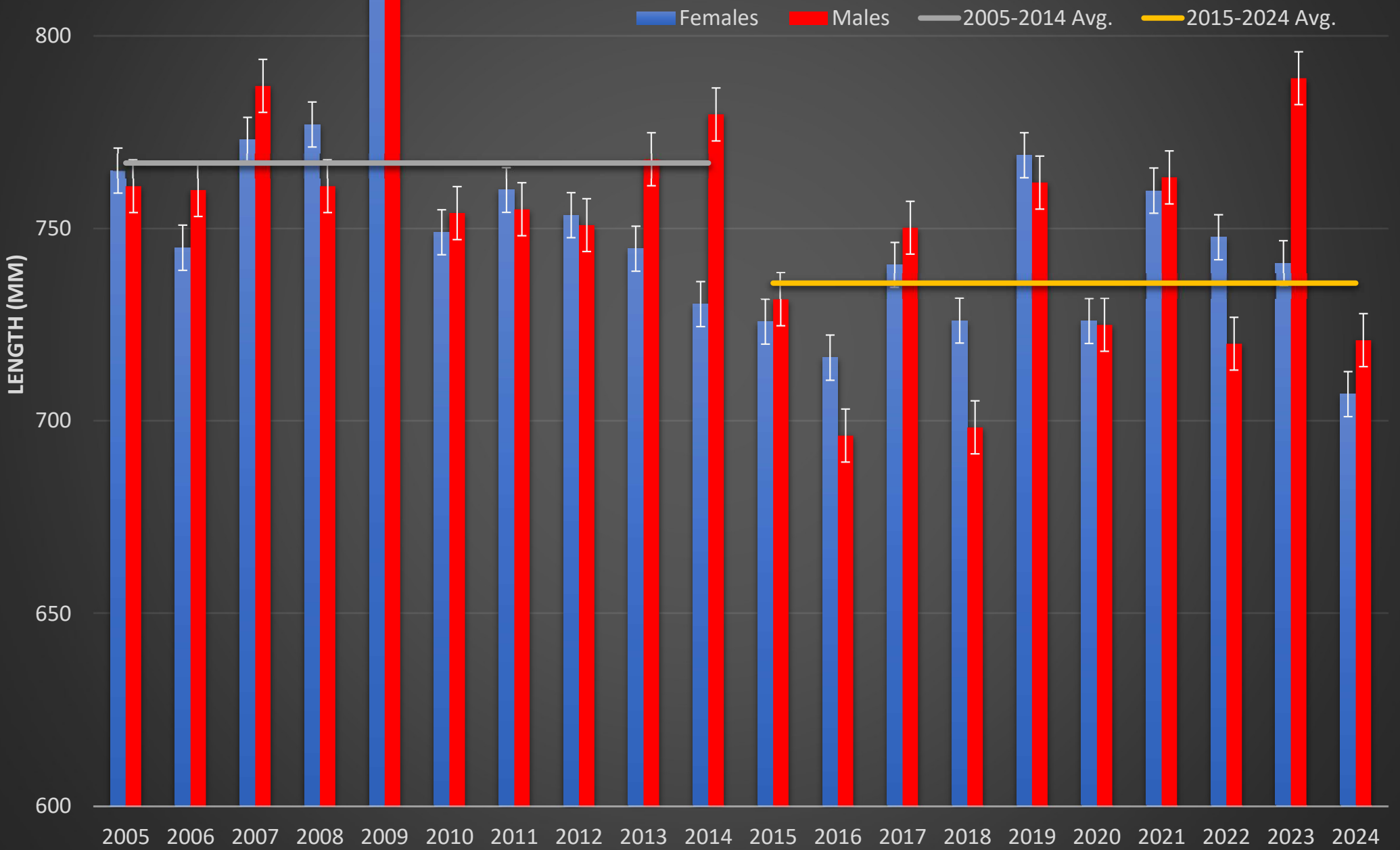


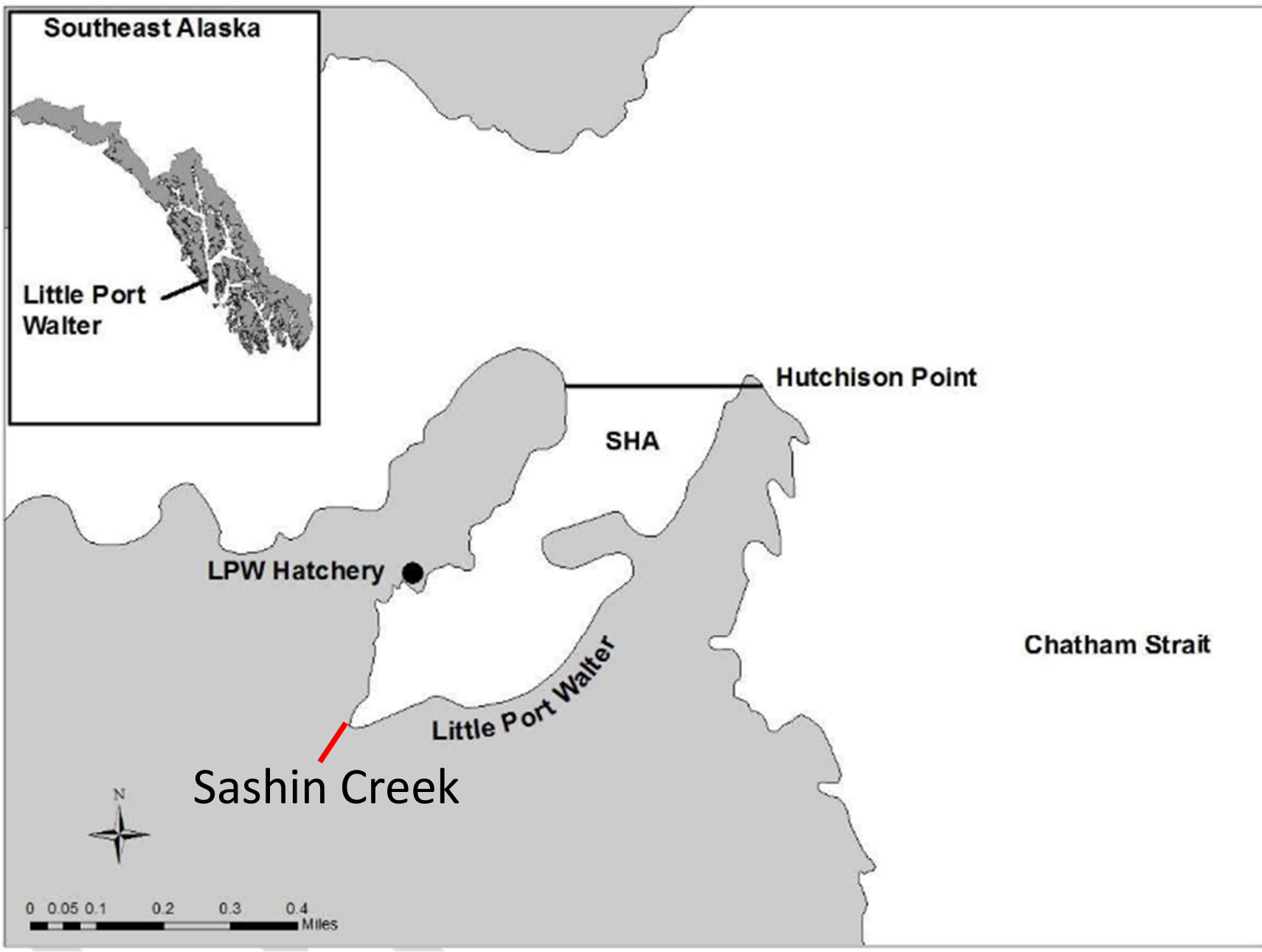
Map adapted from Marston et al. 2008.  
Images courtesy of Nate Catterson, USFS



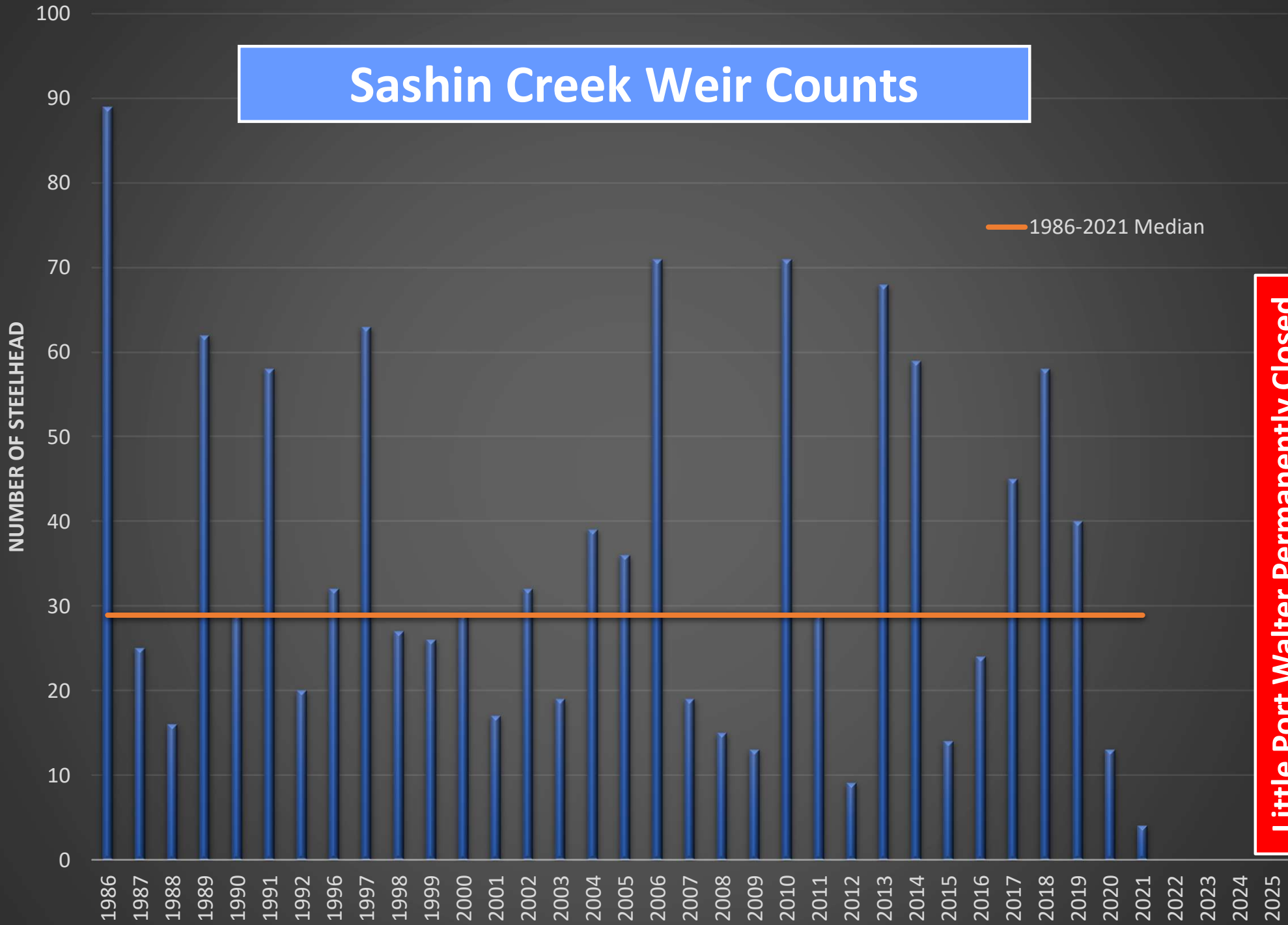


# Situk River Mean Total Length

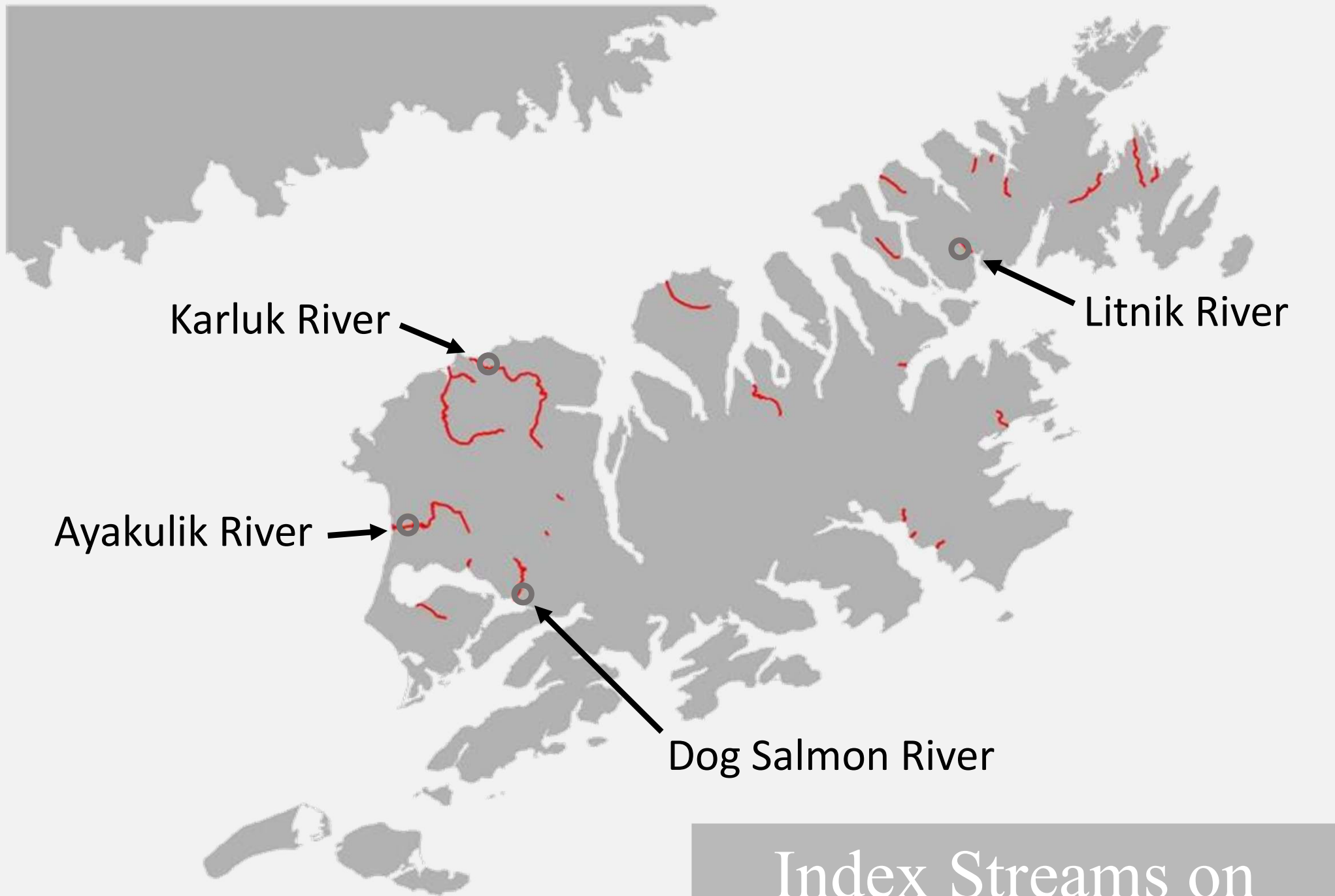




# Sashin Creek Weir Counts



Little Port Walter Permanently Closed



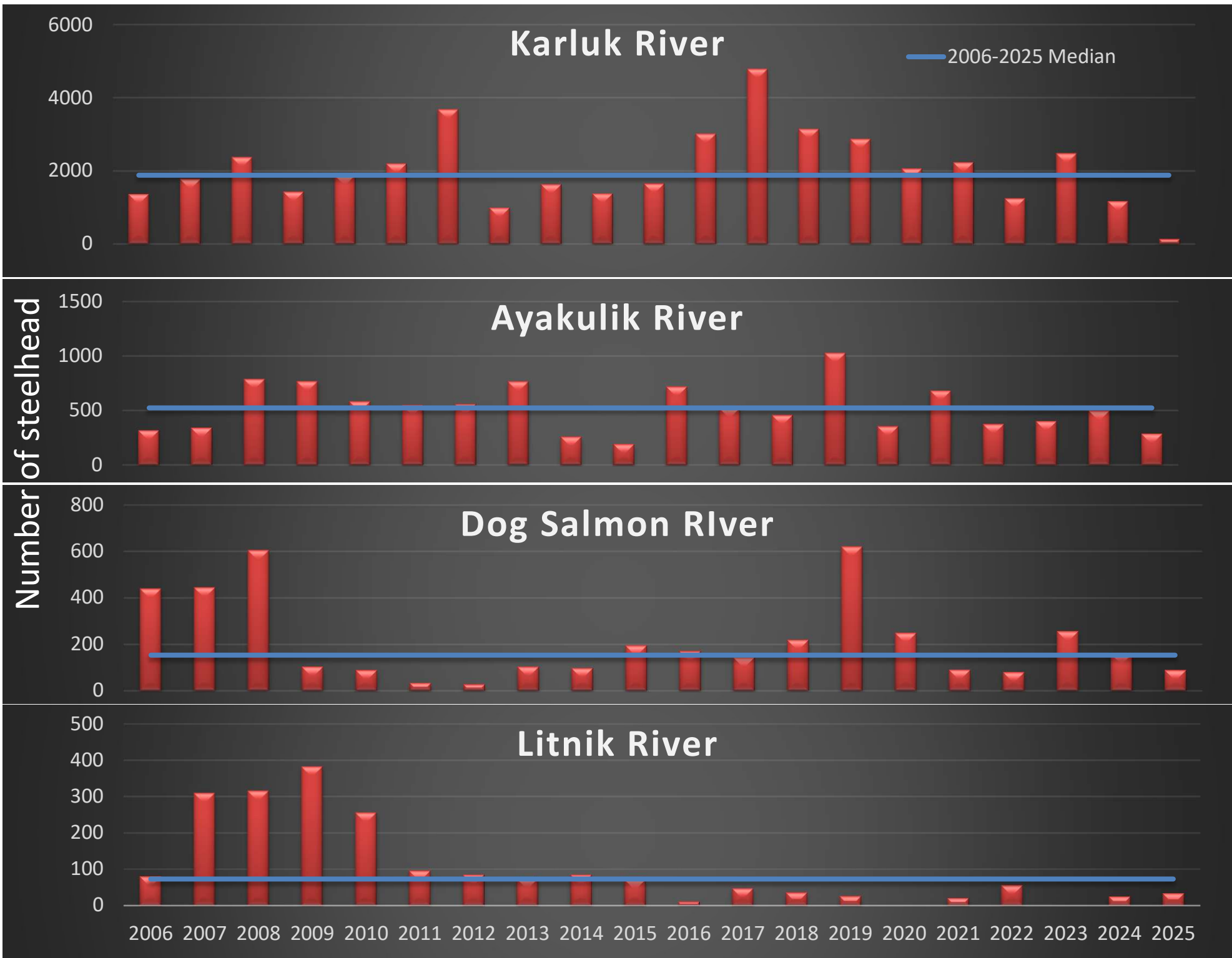
Karluk River

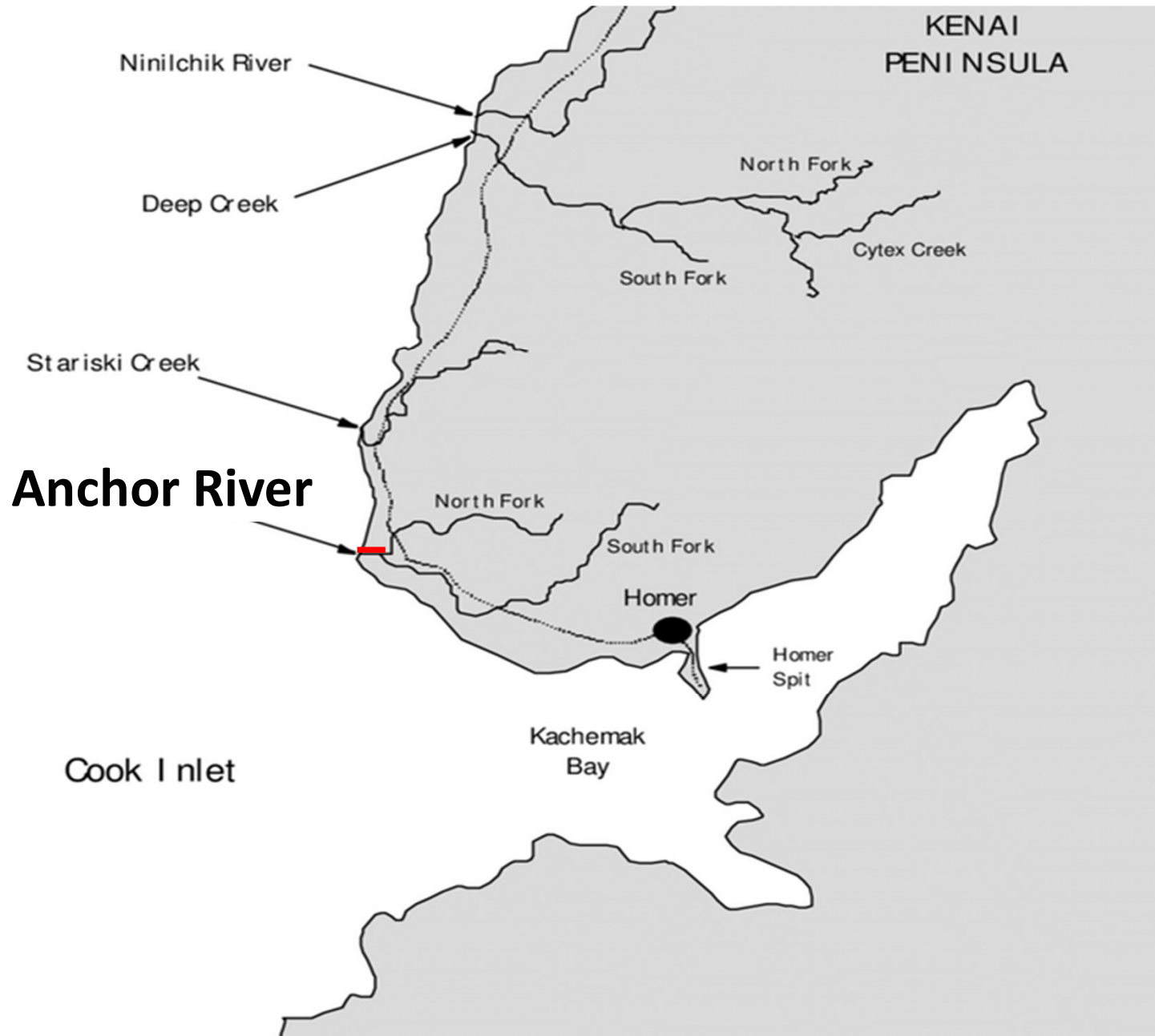
Litnik River

Ayakulik River

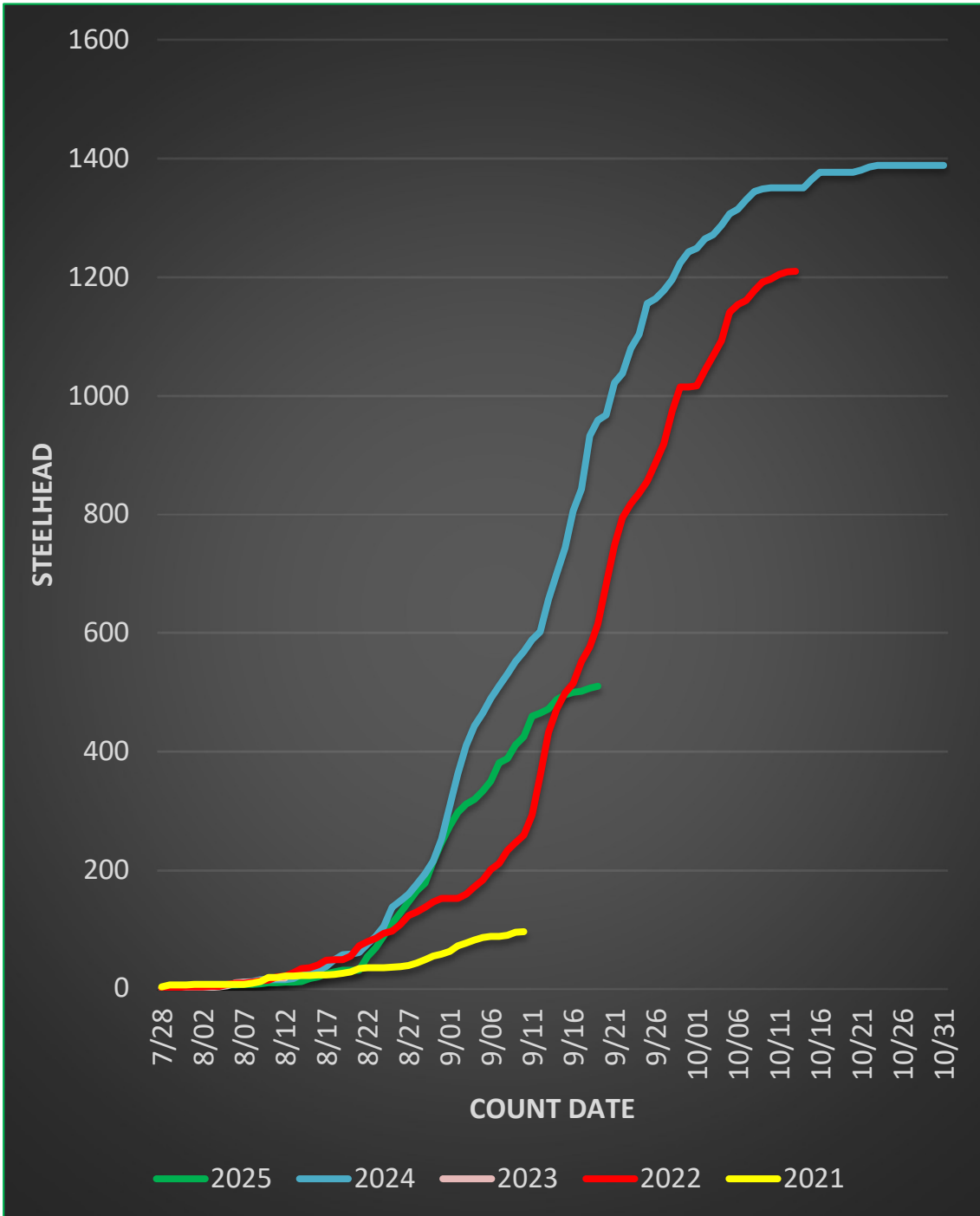
Dog Salmon River

Index Streams on  
Kodiak Island Alaska





# Anchor River Weir Steelhead Count



# Snorkel Surveys



# Index Streams in Southeast Alaska

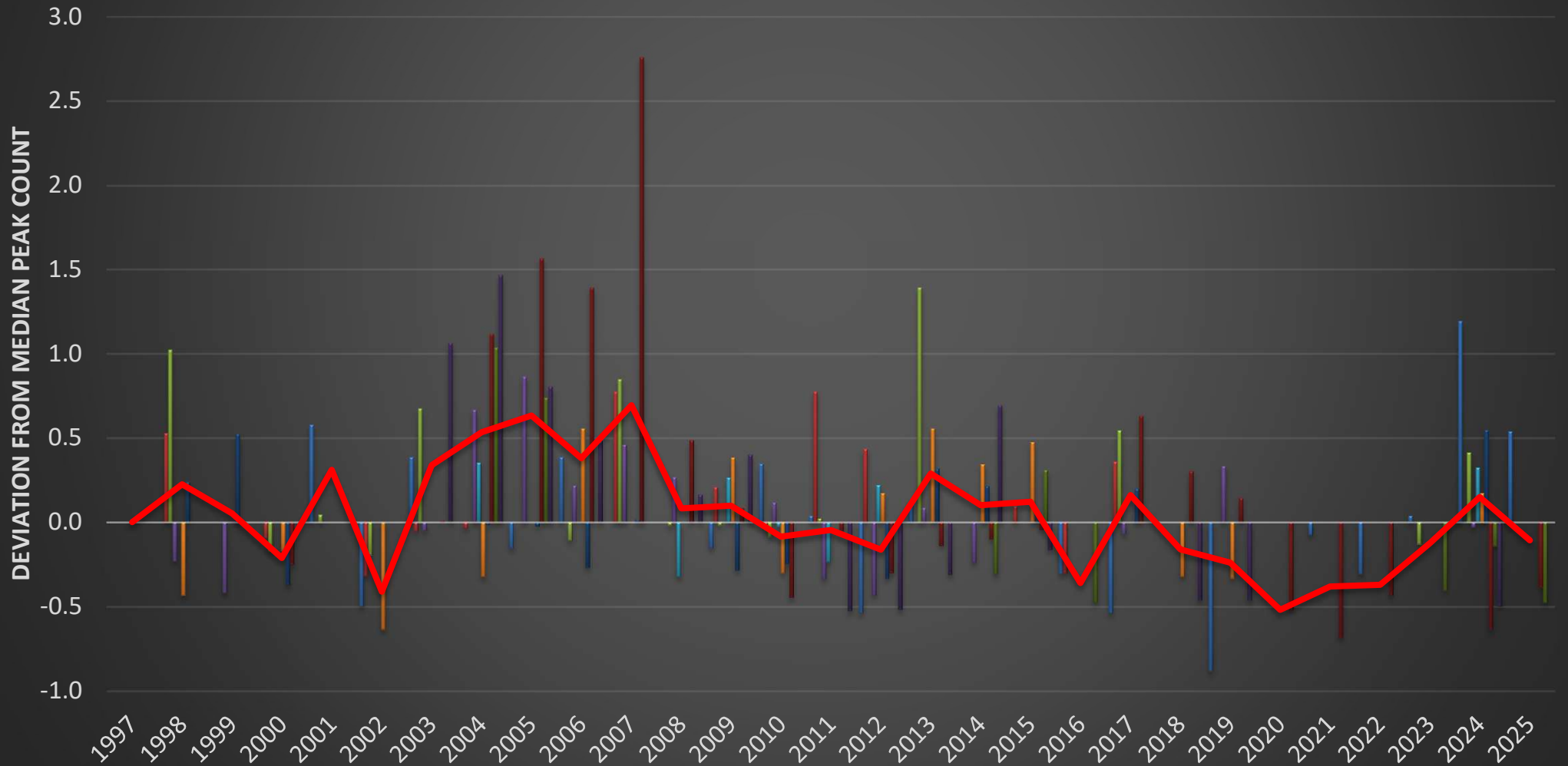


# Historic Counts

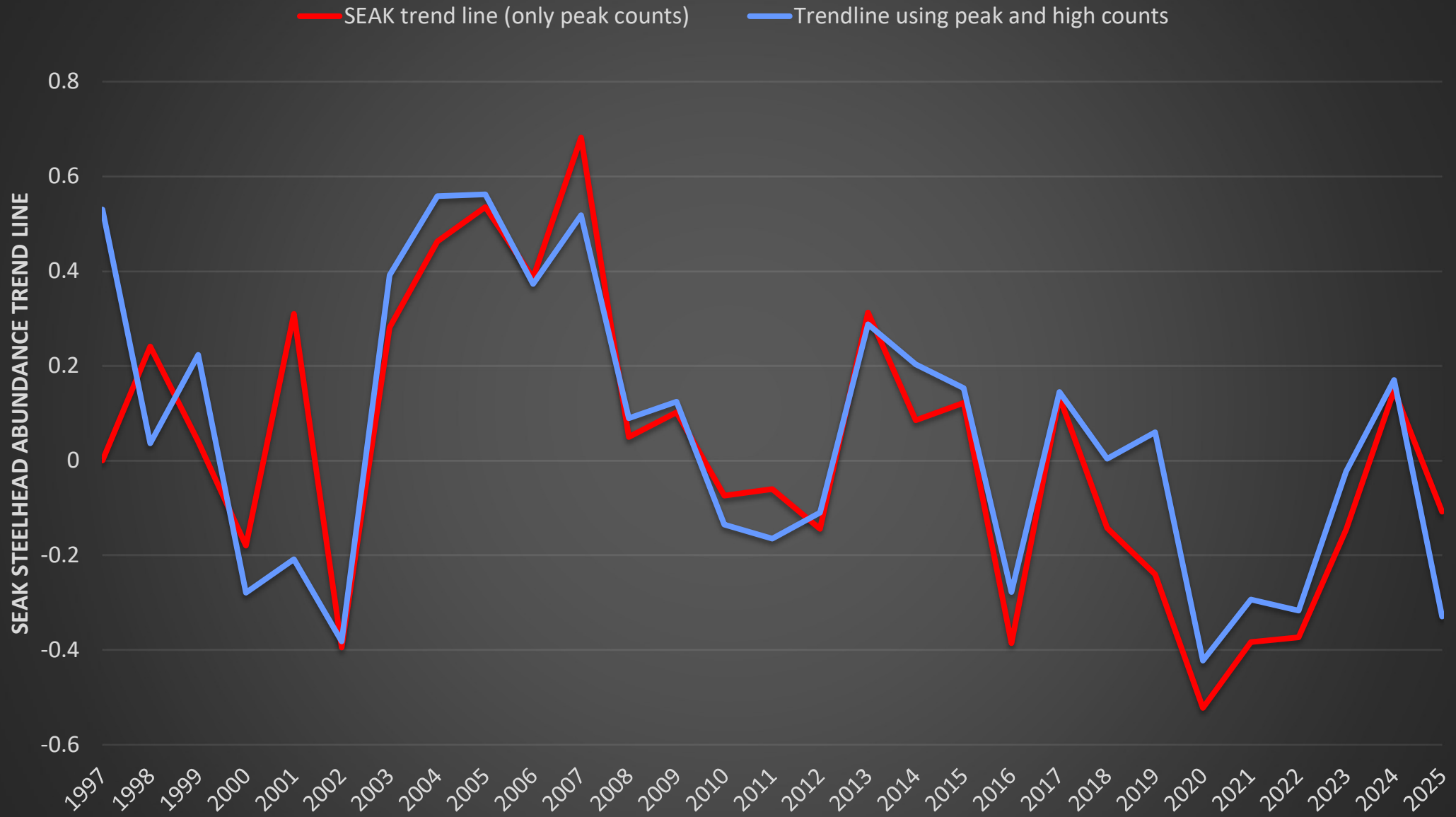
Stream Name		1997	1998	1999	2000	2001	2002	2003	2004	2005	2006	2007	2008	2009	2010	2011	2012	2013	2014	2015	2016	2017	2018	2019	2020	2021	2022	2023	2024	2025	Average	Average peak count
Ketchikan	White River	84	93	60	38	48	37	77	35	67	41	85	45	45	42	47	73	110	76	132	41	71	9	104	3	42	40	65	54	59	59	
	Ward Creek	10	41			143			171	146								35	58	110	44	84	70	114	28	35	50	72	44	74	87	
Prince of Wales	Harris River	104	156	192	79	53	188	195	124	123	92	128	122	90	95	58	84	166	153	133	78	151	204	139	124	124	166	189	195	208	135	131
	Eagle Creek	90	56	118	82	36	95	67	102	154	134		137	69	54	116	154	133	146	84	99	67	66		53	27	73	116	38	91	100	
Petersburg	Petersburg Creek	123	152	115	42	64	41	188	330	369	241	289	251	198	221	131	112	215	151	149	124	184	175	333			149	192		182	216	
	Slippery Creek				33	41	31	76	92		79	68	46	86	66	52	83		70	54	124	81	93				158	90		75	73	
Sitka	Ford Arm Creek	296	103	89	134	28	122	181	379	459	428	673	266	194	99	169	125	154	161	171	141	292	233	205	86	56	101	179	65	110	197	214
	Sitkoh Creek	329	154	120	112	115	65	296	354	259	213	70	167	201	71	68	69	99	243	120	89	78	77	76			47	73	60	139	174	
Juneau	Pleasant Bay Creek	155	81	132	48	48	36	50	51	47	59	94	53	64	51	94	76	77	61	58	37	72	78	40			38	25	23	63	60	
	Peterson Creek	26	29	38	27	41	13	36	39	22	36	26	26	22	35	27	12		27	7	18	12	6	3	11	24	18	27	57	40	25	26

# Standardized Southeast Alaska Peak Snorkel Steelhead Counts

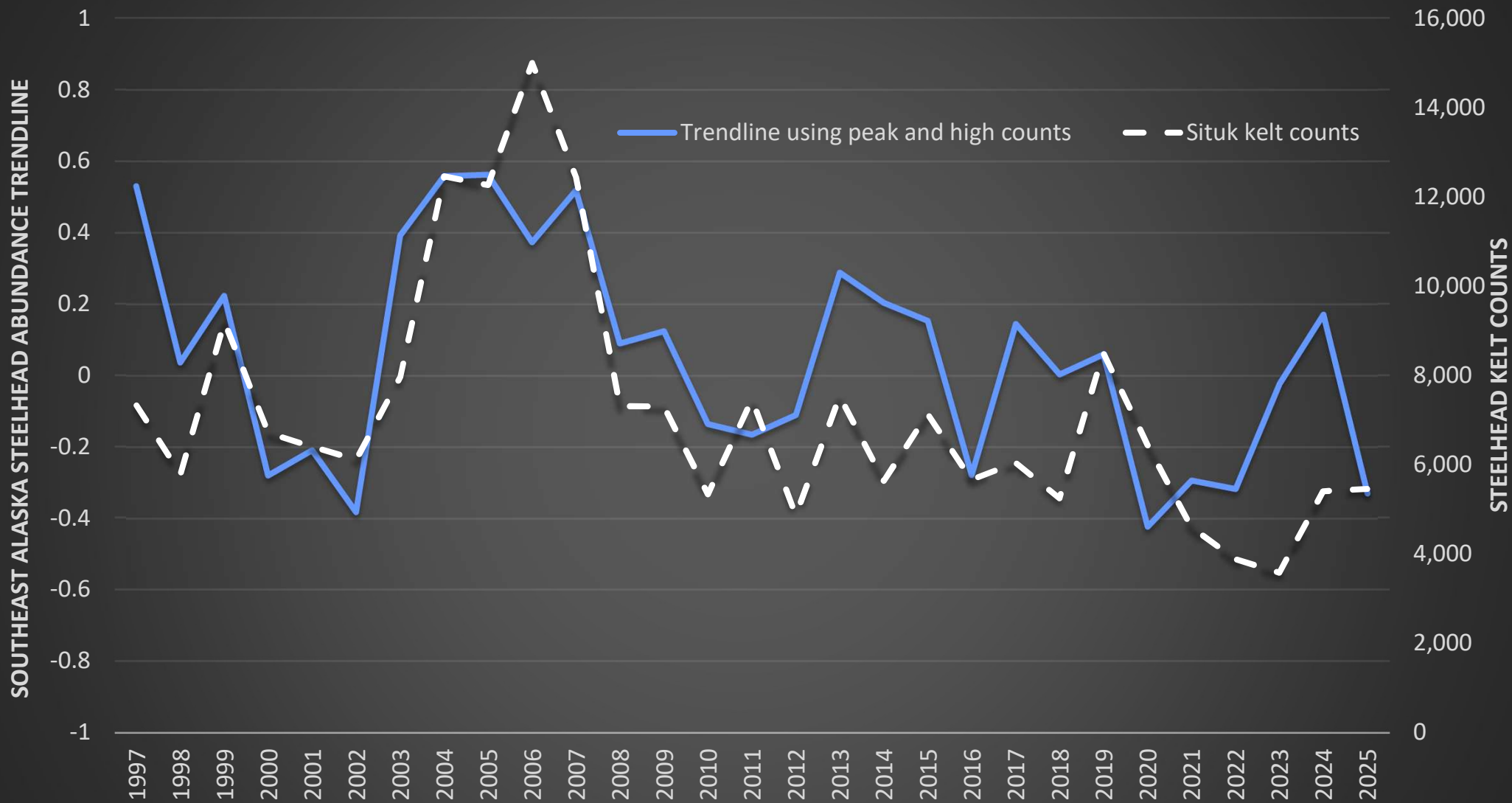
## Standardized Southeast Alaska Snorkel Steelhead Counts



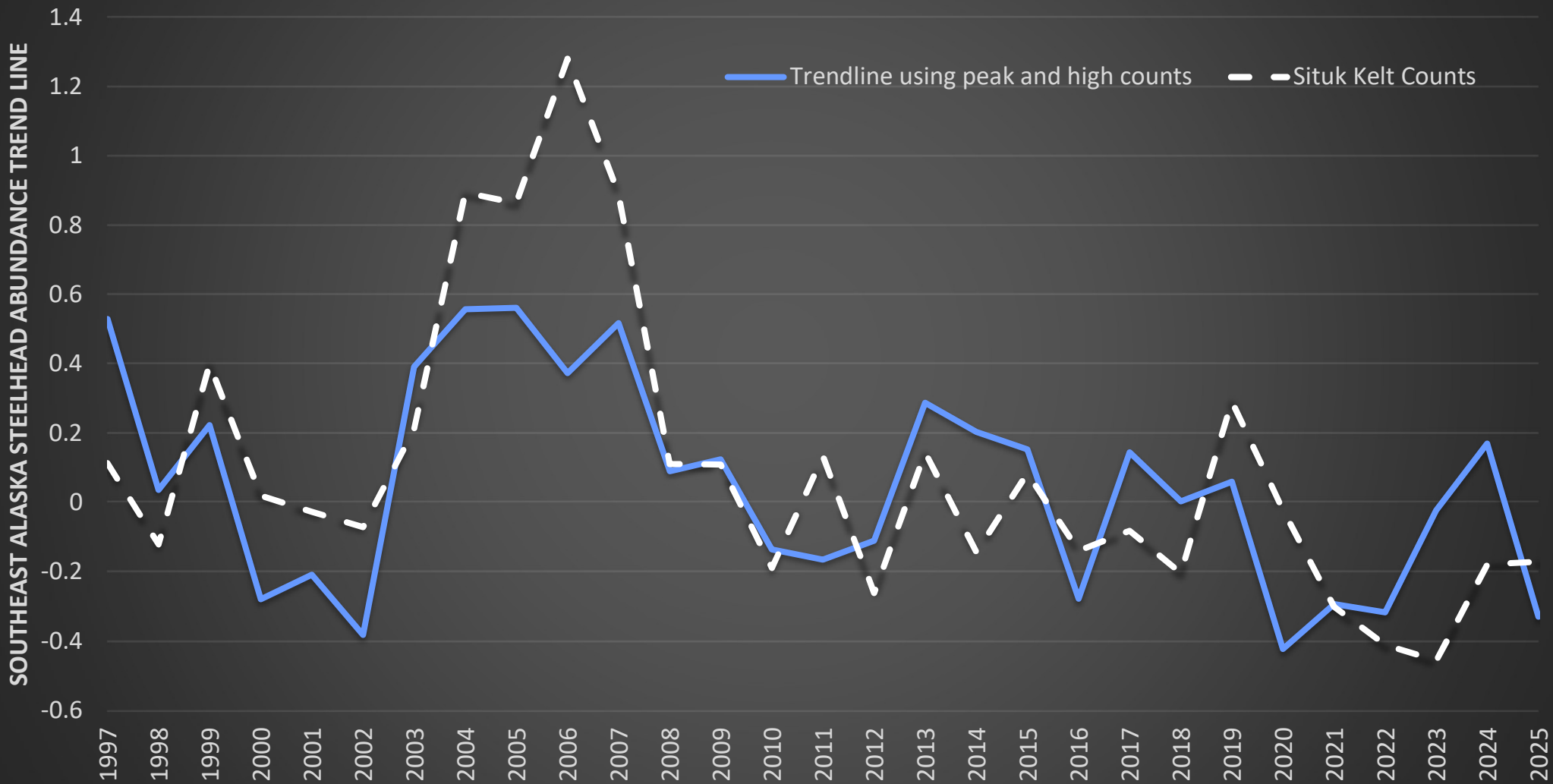
# Incorporating High Counts into Trend Line



# Standardized Southeast Alaska Peak/High Snorkel & Situk Weir Steelhead Counts



# Standardized Southeast Alaska Peak/High Snorkel & Situk Weir Steelhead Counts





## Steelhead/Trout Management

- 5 AAC 75.220 Statewide Management Standards for Wild Trout
  - ✓ Optimal Sustained Yield
  - ✓ Conservative Regulations
- 5 AAC 75.222 Policy for the Management of Sustainable Wild Trout Fisheries
  - ✓ Recognizes importance of healthy trout/steelhead populations to Alaska
  - ✓ Conservative management
  - ✓ Habitat protection
  - ✓ Importance of scientific research to guide management

# Conservative Sport Fishing Regulations

## Southcentral Alaska

Harvest Limit: 1 per day, **2 annually** (> 20 inches)

- Spawning area closures (Kenai tribs, Kasilof)
- Winter closures

Kodiak Road Zone: C&R

- Trout: 2 per day (<16)
- in combination with cutthroat

## Upper Copper River

2 per day, 1 (> 20 inches)

- Catch and release
- Spawning closures

## Southeast Alaska

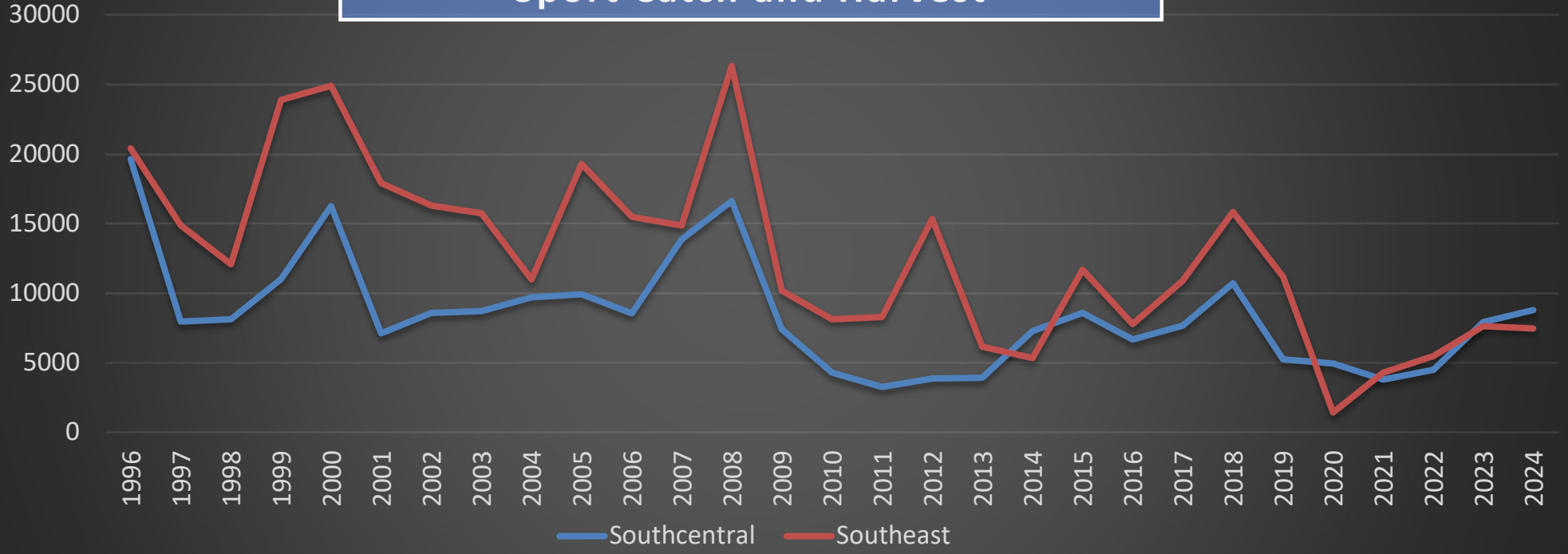
Harvest Limit: 1 per day

- **2 annually** (> 36 inches minimum)
- Catch and release
- Spawning area closures
- Trout: 2 per day (11-22) in combination with cutthroat

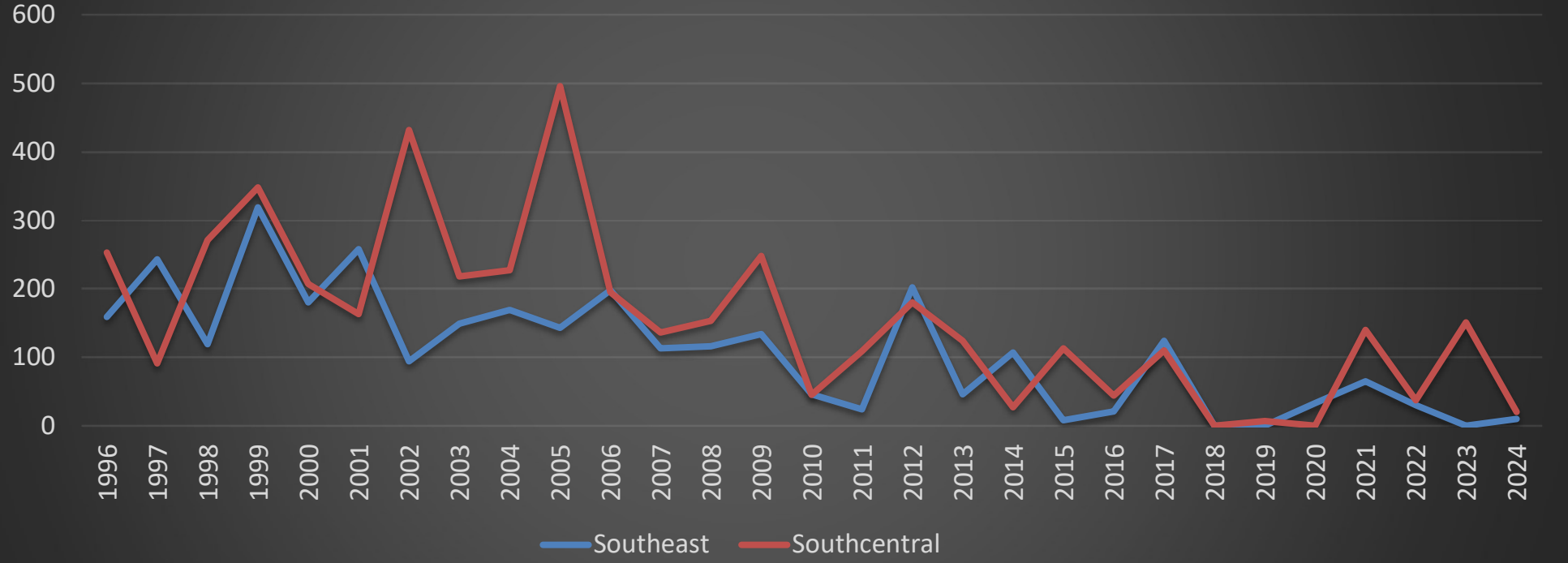


# Sport Catch and Harvest

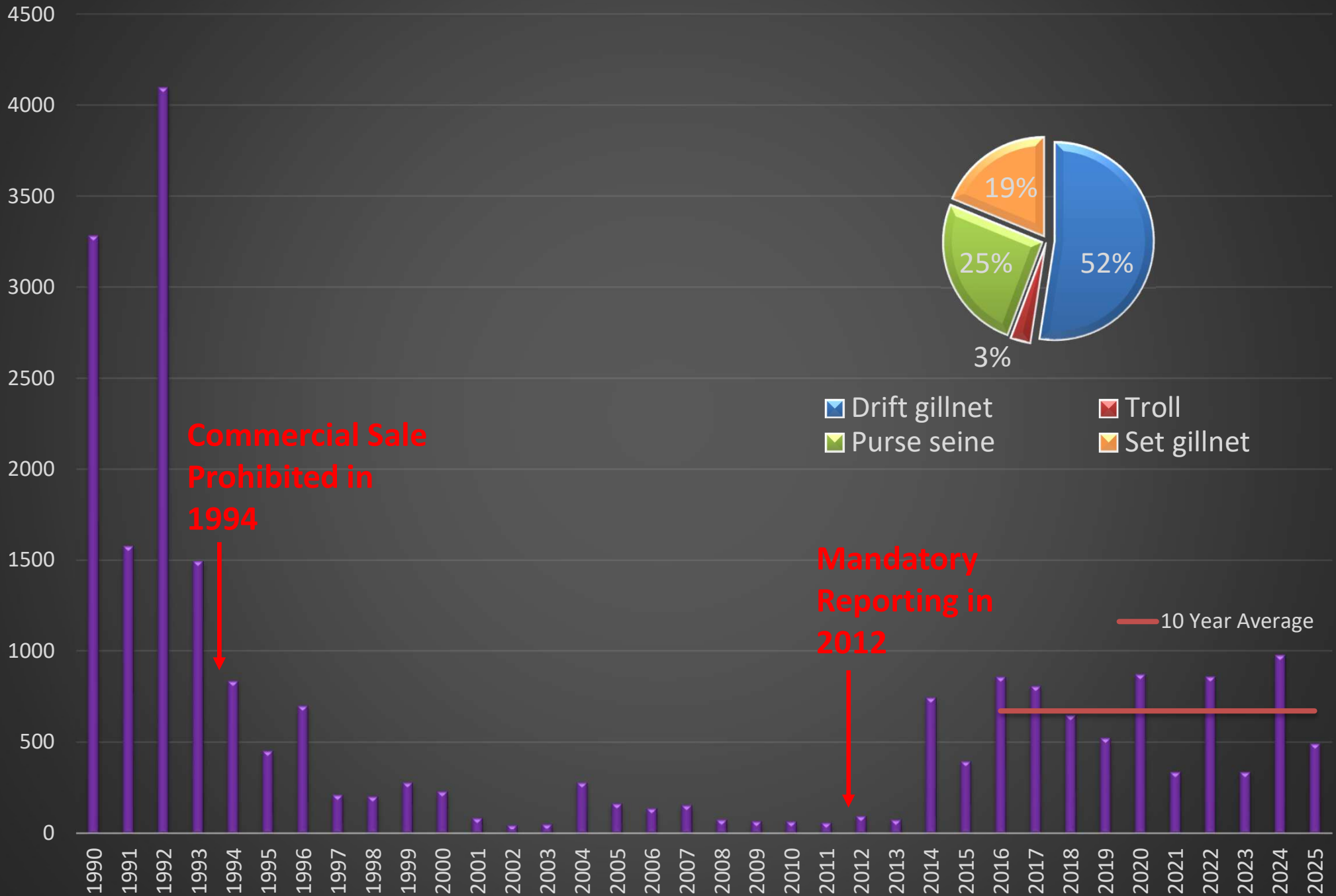
NUMBER OF STEELHEAD CAUGHT



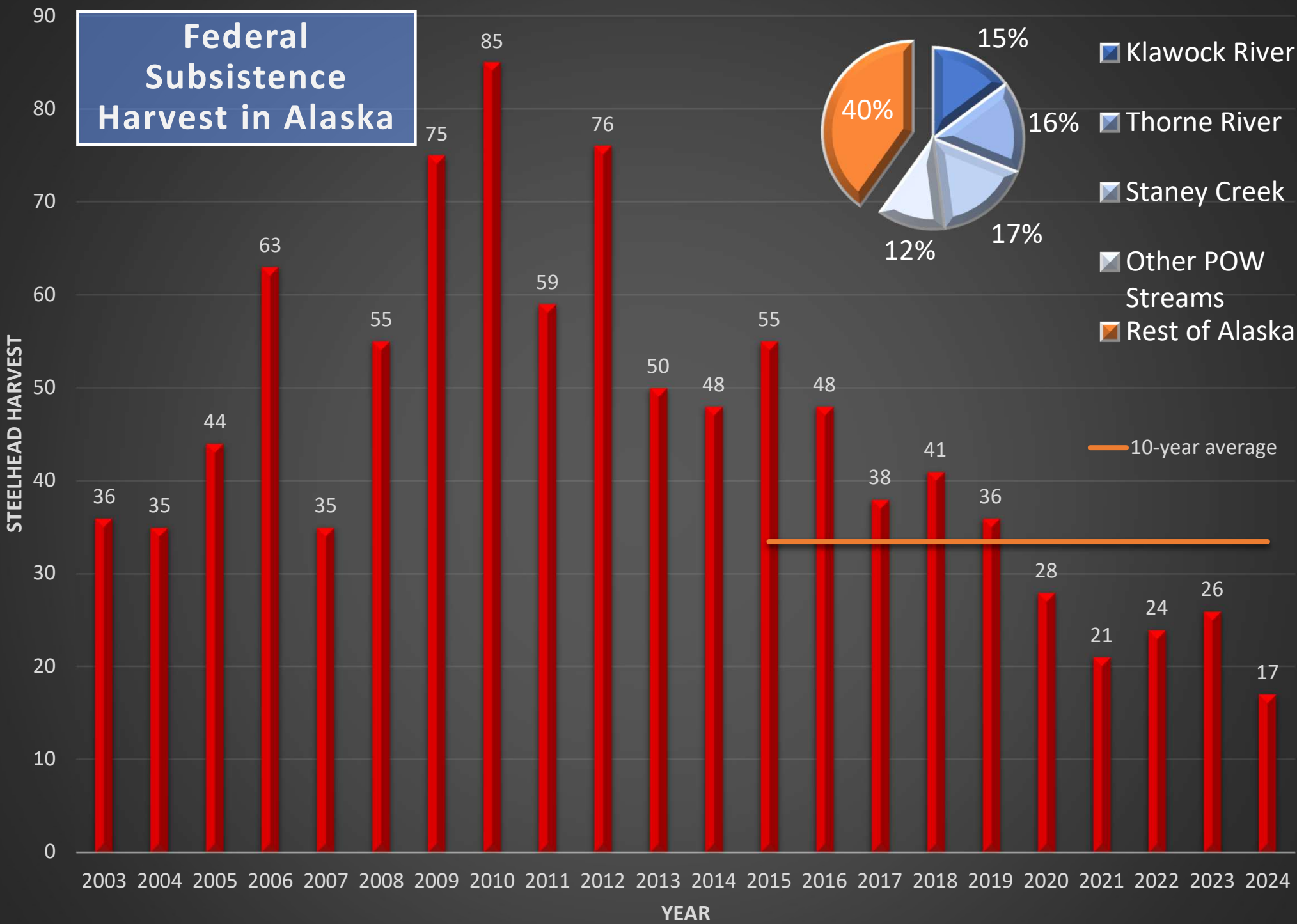
NUMBER OF STEELHEAD HARVESTED



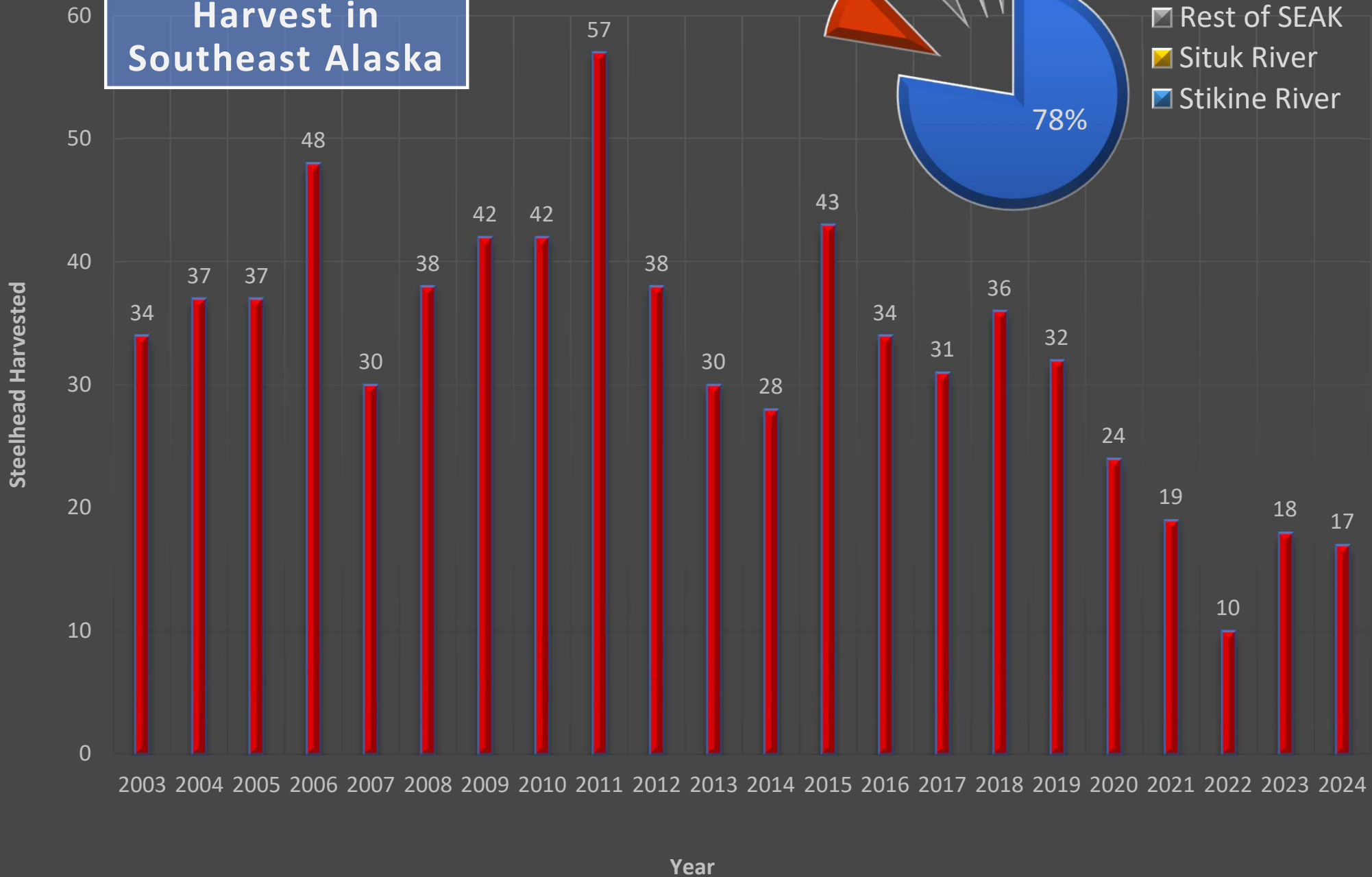
# Commercial Steelhead Harvest



# Federal Subsistence Harvest in Alaska

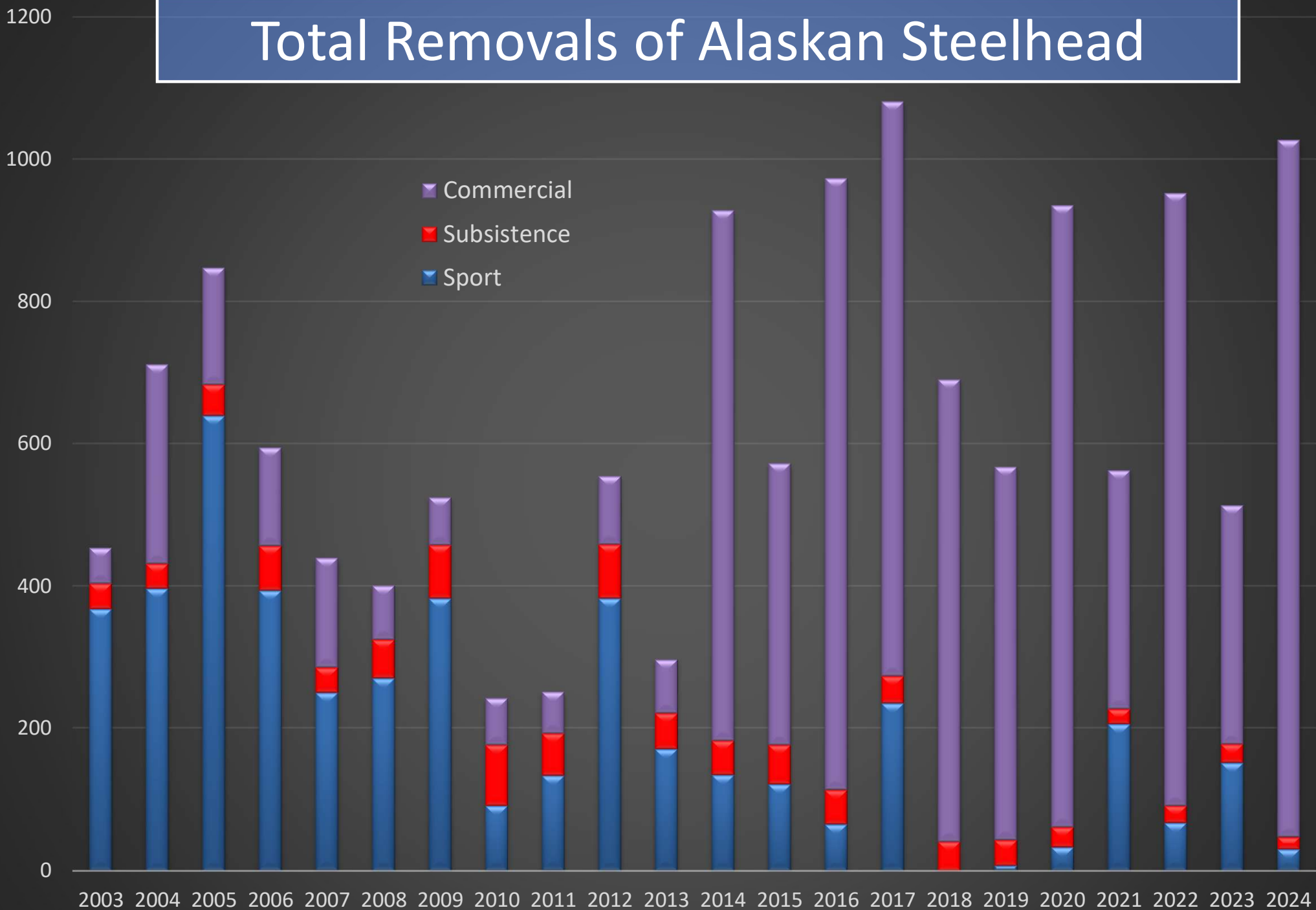


# Federal Subsistence Harvest in Southeast Alaska



Row Labels	2003	2004	2005	2006	2007	2008	2009	2010	2011	2012	2013	2014	2015	2016	2017	2018	2019	2020	2021	2022	2023	2024	Grand Total
102-70-10580																							
12 Mile Creek									1							1					0	4	6
Alder Creek			1																				1
Big Bay													1										1
Big Ratz Creek										1													1
Black Bear Creek												1				1				2			4
Blackbear Creek																1		1					2
Cable Creek			1			1													0	0	0	1	3
chitina																1							1
chitina airport														1				1			2		4
Copper Center												3			1			1		1	3	3	11
Copperville									3			5											8
Eagle Creek		1	1	5		4	3	3	1	3	3	1	1	3	1		3	1	2		1	2	39
Eagle River										1	2	1											4
Fall Creek Thorne River																			0				0
Flicker Creek			1																				1
Ford Arm					1																		1
Freshwater Creek				1																			1
Game Creek				2	1	1	2																6
Goose Creek										1													1
Government Slough													1										1
Harris River		3	3		2	2							3	1	2	7	3	2		3	3	1	35
Hydaburg River				2																			2
Irish Creek									2														2
Iyouktug Creek						1																	1
Kadake Creek			2																				2
Karta River		1	2	4	1	2	3	2	2	3									0		3	1	24
Klawock River	11	10	10	7	4	4	6	6	17	22	8	2	5	7	4	4	2	5	4	4	2	3	147
Kruzoff Island																			1				1
Lake Eva			1						2	1	1		1										6
Leo Creek					1									1									1
LogJam																			0				0
Luck Creek				2				1															3
Marten Creek										1	1	1											3
Maybeso Creek					2																		2
mile 111.3 HWY 4, copperville																	1						1
Mud Bay River					1																		1
Nakwasina River								1		1													2
Natzuhini River																						0	0
Obrien Creek										1	1	2											4
Olive Creek															1								1
Point White Creek			4																				4
Ratz Creek			3	3			6	7			4	2		1	1	2	6		0	0			35
Redoubt								2	2			2	1				1		1		0	1	10
Salamander Creek				1							1												2
Salmon Creek												1											1
Salmon Lake Creek				2	3		3	3		1	2	1	1	3	1								20
salmon point													2										2
Saltery Creek			2																				2
Shaheen Creek																							2
Shinaku Creek												1	1			3		1				0	6
Sitkoh Creek			1																				1
Situk River	8	5		1	5						1												20
Skogs Creek																2	2	2	1				7
Spasski Creek				2			2																4
St Nicholas Creek									2	1			1										4
Stain Creek																					2	4	6
Staney Creek	2	11	5	13	6	14	5	9	9	7	7	8	12	11	10	12	5	7	5	3	3	4	168
Steelhead Creek													1				2	1	1	1			6
Stikine River			1			2		2	7					1	2	1							16
Suntahean Creek				1																			1
tazlina																2		1					3
Thorne River	10	3	3	4	3	9	7	3	11	7	12	15	16	15	9	4	10	7	6	4	4		162
Totem Creek											1												1
Tunahean Creek								1															1
wolfe point																						3	3
Woods Canyon								1					5										6
(blank)	5		4	13	3	17		1	7	25	6	2	4	4	2			1					94
Copper River Fish Wheel							36	38								2							76
Grand Total	36	35	44	63	35	55	75	85	59	76	50	48	55	48	38	41	36	28	21	24	26	17	995

# Total Removals of Alaskan Steelhead



# Conclusions

- Sport fishery continues to trend towards catch and release with very low harvest rates.
- Abundance trends remain below historic medians.
- Size composition has shifted to smaller fish on the Situk River.
- Continued opportunities for steelhead research in Alaska.
- Continued stock monitoring and conservative management are priorities statewide.



Acknowledgements- ADFG Colleagues: Patrick Fowler, Craig Schwanke, Matt Catterson, Kelly Reppert, Dave Love, Monica Matz, Jason Pawluk, Dan Teske, Troy Tydingco, John Driscoll, Max Schoenfeld, Kercia Schroeder, Jake Wieliczkievicz, Randy Peterson, Chis Hinds, Carly Lemieux, Adam Lake, Maya Chari, Jessica Etheridge, Mark Hieronymus, Kade Holling, Stephen McKay, Lewis Page, Daison Weedup, Boonie Bennett, James Larson, Joseph Spencer, Luke Dillard, Jacob Collier, Andy Deering, Scott Bucy, Anthony Walloch, Steve Bethune, Michael Booz, Holly Dickson, Brian Marston, Jeff Nichols, Ivy Schultz, Andy Piston; Charlie Waters (NOAA), Nate Catterson (USFS), and Robert Cross (USFS).

