

US Army Corps  
of Engineers  
Seattle District

# FY18 SOUTH BEACH BENEFICIAL USE SITE CAPACITY & PLACEMENT PLAN

## MARCH 2018 (CONDITION)

MAR 2018

**1. STATIC CAPACITY FOR SOUTH BEACH BENEFICIAL USE SITE, SECTOR 1:**  
SJDS TO -35' MLLW: 1,158,643 CY (CAPACITY SHOWN)

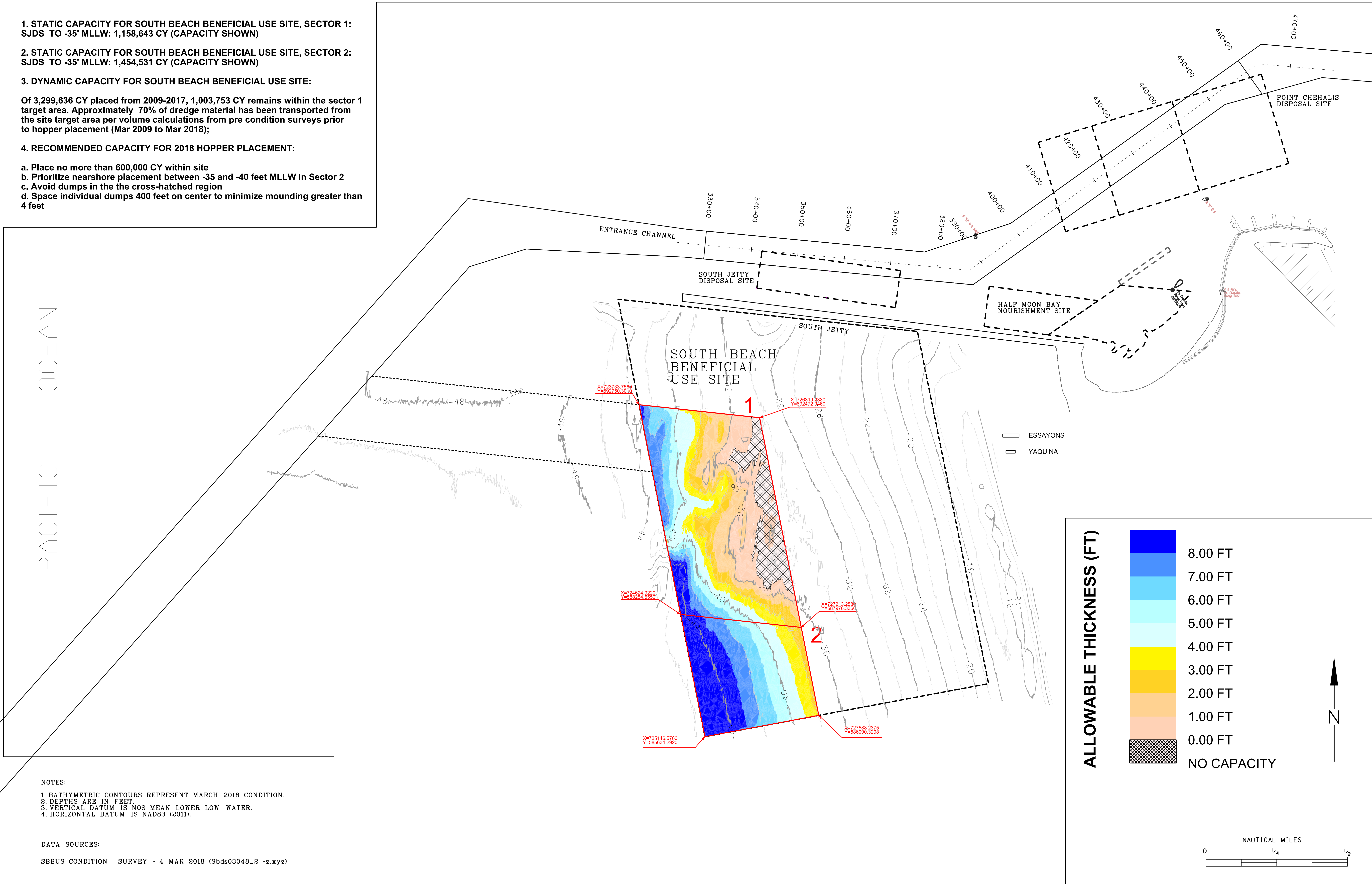
**2. STATIC CAPACITY FOR SOUTH BEACH BENEFICIAL USE SITE, SECTOR 2:**  
SJDS TO -35' MLLW: 1,454,531 CY (CAPACITY SHOWN)

**3. DYNAMIC CAPACITY FOR SOUTH BEACH BENEFICIAL USE SITE:**

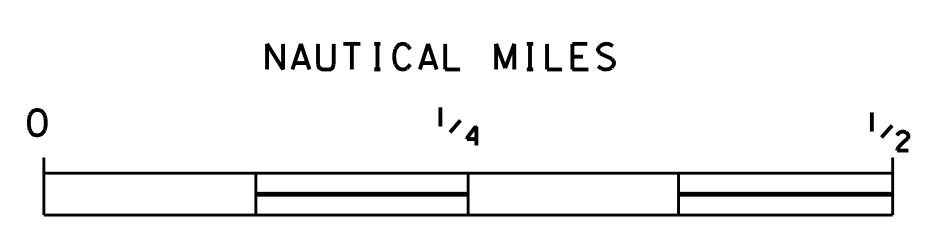
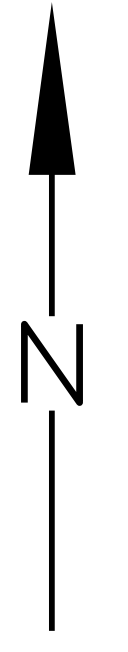
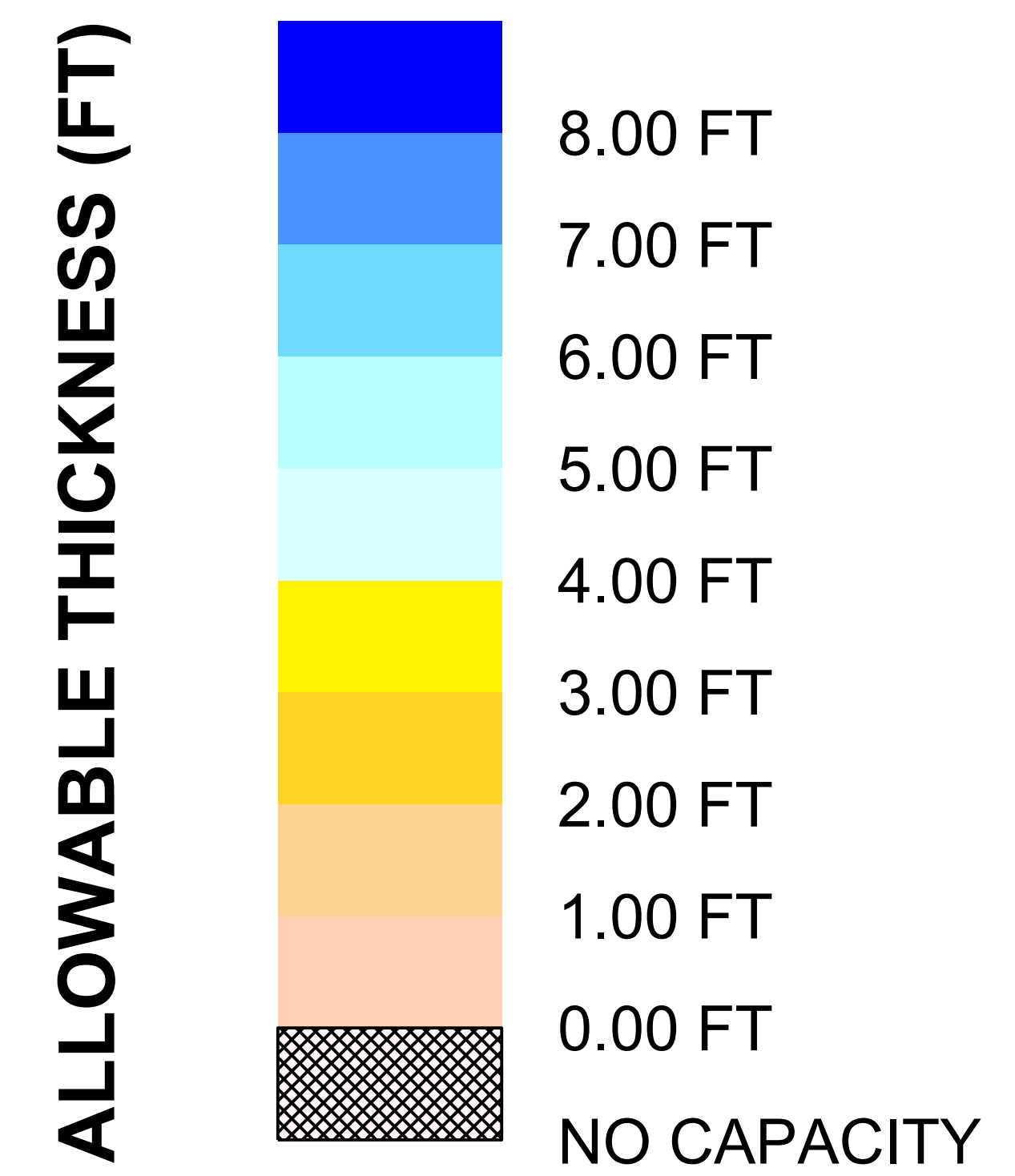
Of 3,299,636 CY placed from 2009-2017, 1,003,753 CY remains within the sector 1 target area. Approximately 70% of dredge material has been transported from the site target area per volume calculations from pre condition surveys prior to hopper placement (Mar 2009 to Mar 2018);

**4. RECOMMENDED CAPACITY FOR 2018 HOPPER PLACEMENT:**

- a. Place no more than 600,000 CY within site
- b. Prioritize nearshore placement between -35 and -40 feet MLLW in Sector 2
- c. Avoid dumps in the the cross-hatched region
- d. Space individual dumps 400 feet on center to minimize mounding greater than 4 feet



PACIFIC OCEAN



NOTES:  
 1. BATHYMETRIC CONTOURS REPRESENT MARCH 2018 CONDITION.  
 2. DEPTHS ARE IN FEET.  
 3. VERTICAL DATUM IS NOS MEAN LOWER LOW WATER.  
 4. HORIZONTAL DATUM IS NAD83 (2011).

DATA SOURCES:  
 SBBUS CONDITION SURVEY - 4 MAR 2018 (Sbds03048\_2 -z.xyz)