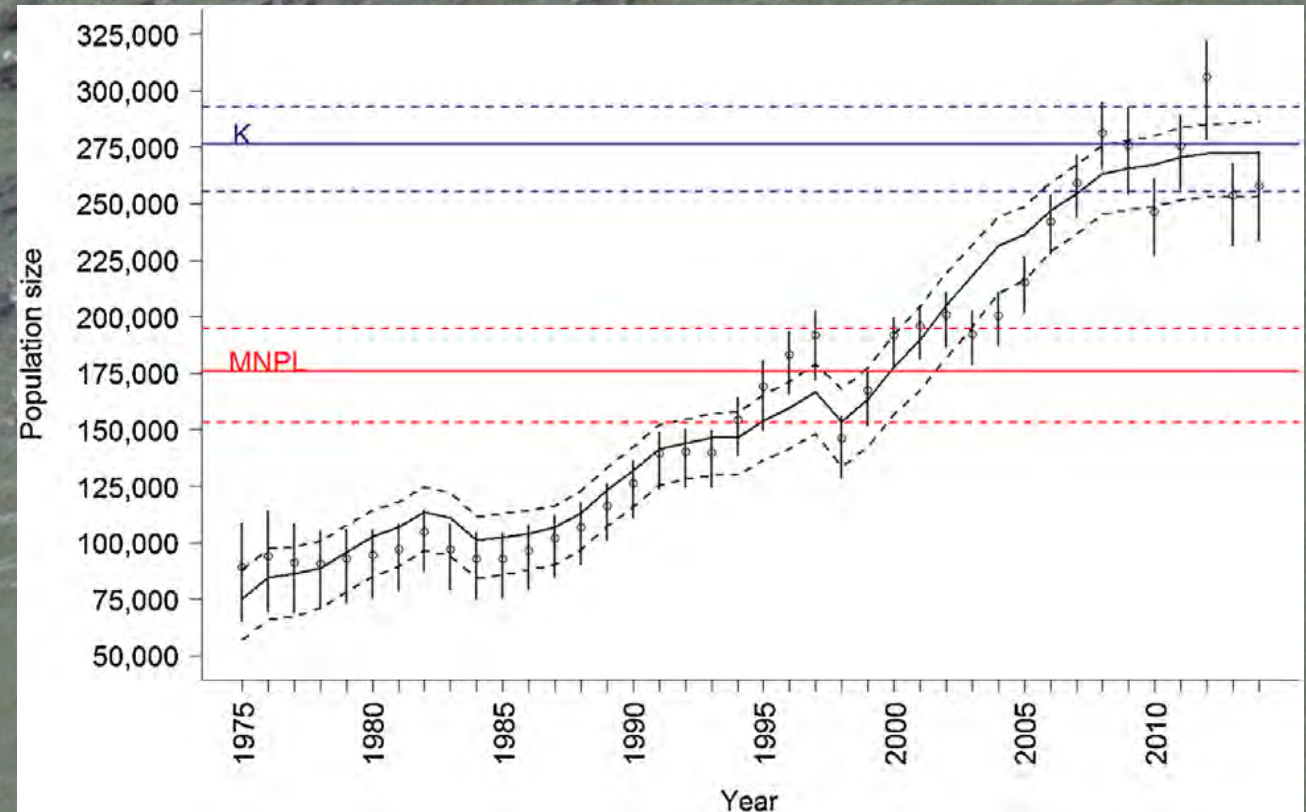


PROGRESS MANAGING PINNIPEDS IN THE COLUMBIA RIVER



Ed Bowles
Oregon Department of Fish and Wildlife
September 2019

MARINE MAMMAL PROTECTION ACT | A SUCCESS STORY...



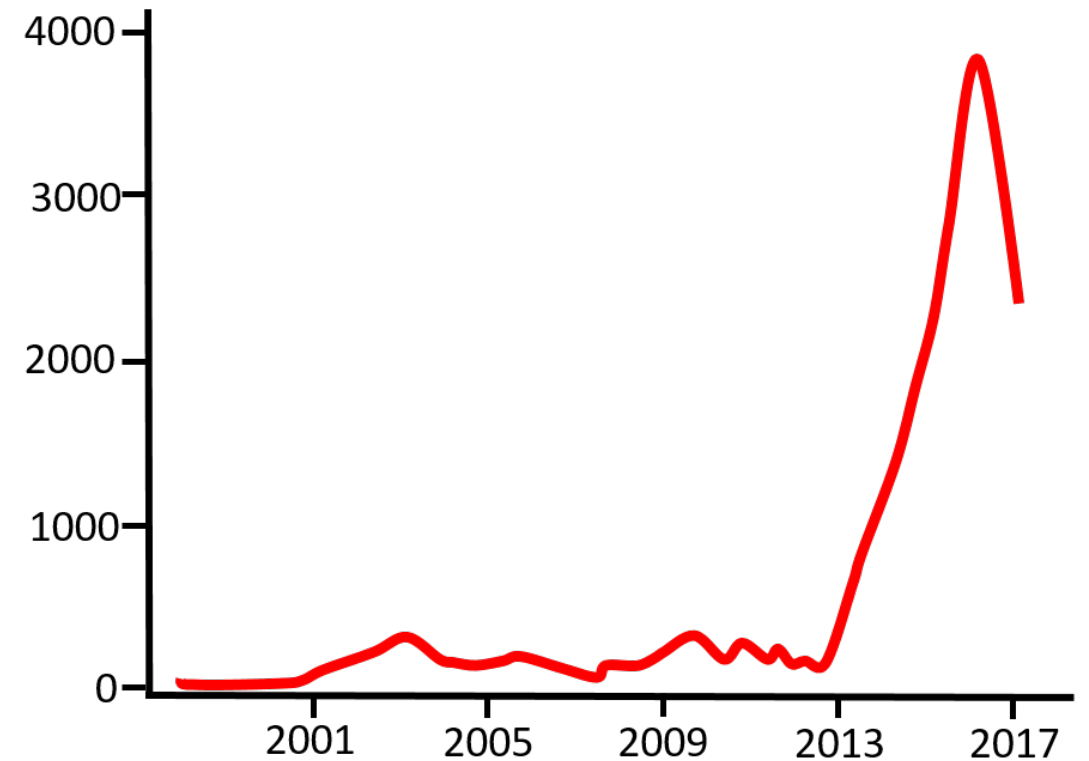
A SUCCESS STORY...WITH UNFORSEEN CONSEQUENCES



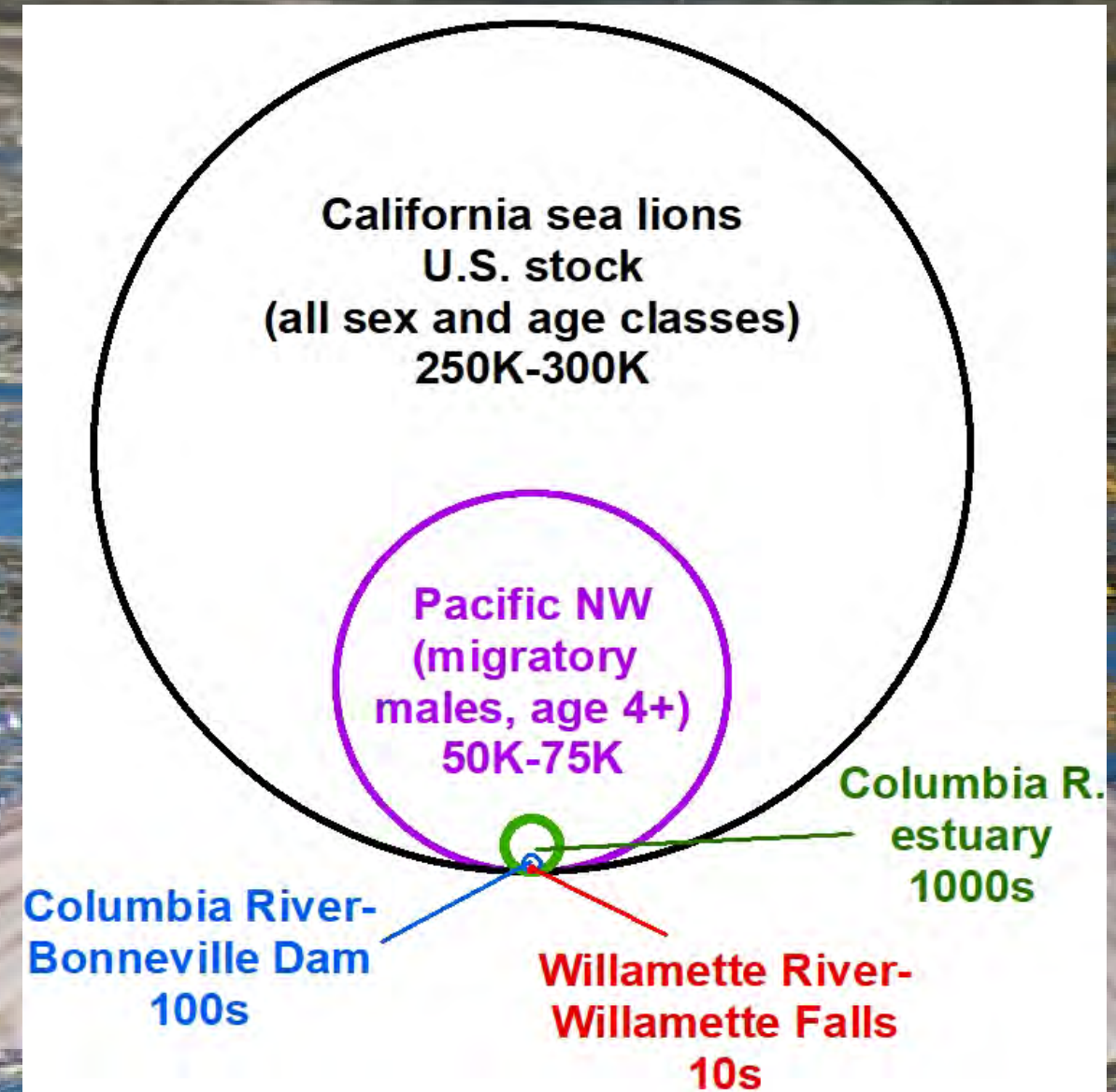
MMPA: Rise of “PROBLEM” ANIMALS and AREAS



Increasing number of California Sea lions in the Columbia Basin



COLUMBIA RIVER | “PROBLEM” ANIMALS and AREAS





PACIFIC OCEAN

N
100
100
mi
km

Columbia River

WASHINGTON

Astoria

Portland

Willamette Falls & Dam

Bonneville Dam

The Dalles Dam

OREGON

BONNEVILLE DAM | 146 MILES UPRIVER



ESA

13

Listed Runs



100-200

Sea lions



Predation

~6%

Loss



Sea lions

236

Removed

WILLAMETTE FALLS | 128 MILES UPRIVER




WILLAMETTE WINTER STEELHEAD


A RUN IN PERIL



Fish
 **512**
Returned 2017

 **40+**
Sea lions

Predation
 **25%**
Loss

Probability
 **~90% vs 6%**
of Extinction



- Target spawners
- Displace spawners

EMERGING ISSUES | STELLER SEA LIONS & STURGEON

Pinniped Predation

- **S. 3119: Amendments to Marine Mammal Protection Act**
 - Flexibility to balance fish and pinniped conservation
 - Limited to Columbia River Basin
 - Bicameral, bipartisan support from PNW congressional delegation
 - Championed by broad coalition of states, tribes, conservation groups and fishing groups
 - Signed into law early January
 - Planned for implementation 2020
 - Interim Section 120 permits in place



WILLAMETTE PINNIPED MANAGEMENT | 2019 Section 120



CSL Removed

33



W Steelhead

3118

Returned

Vs.

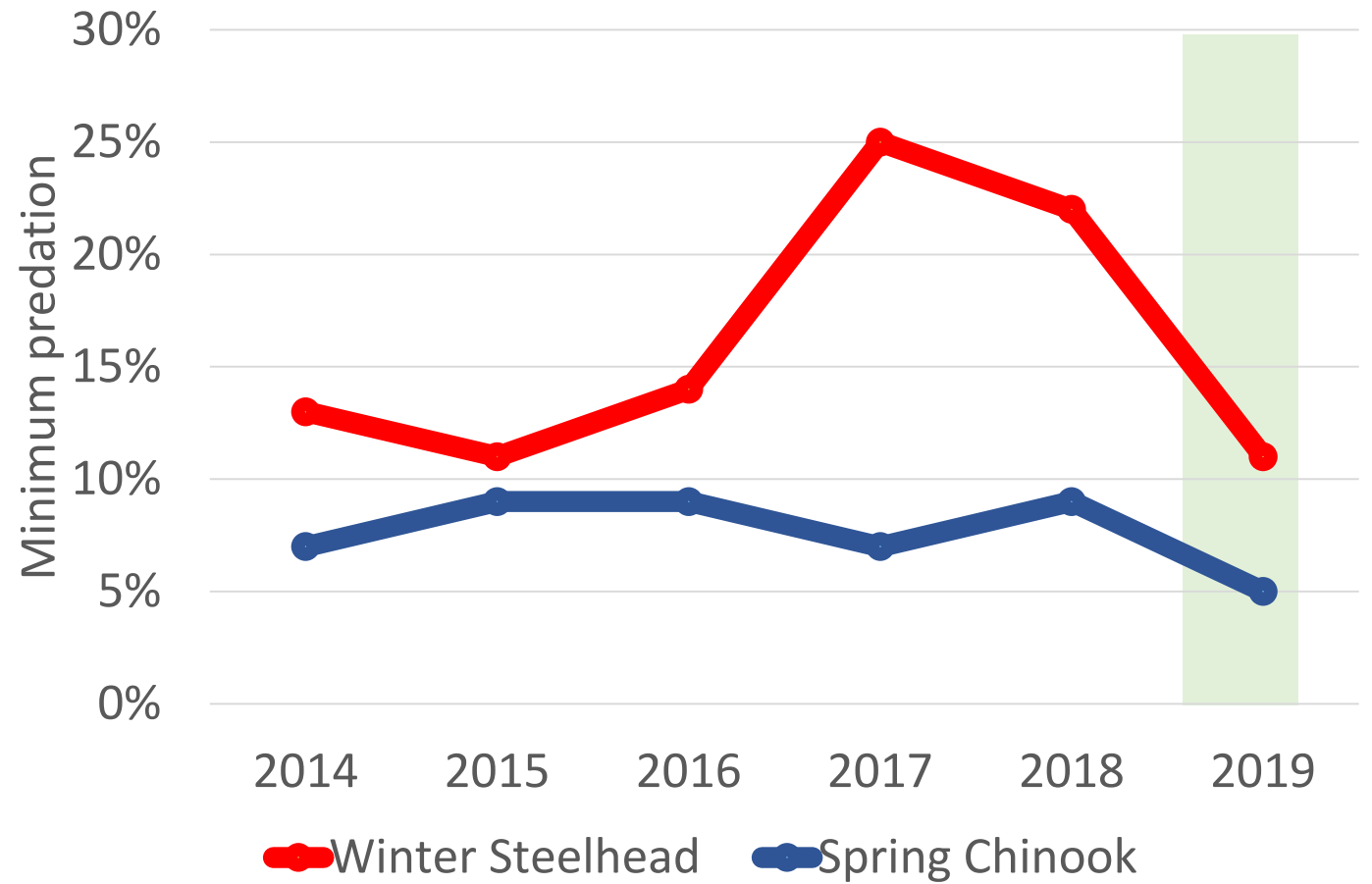


W Steelhead

512

Returned 2017

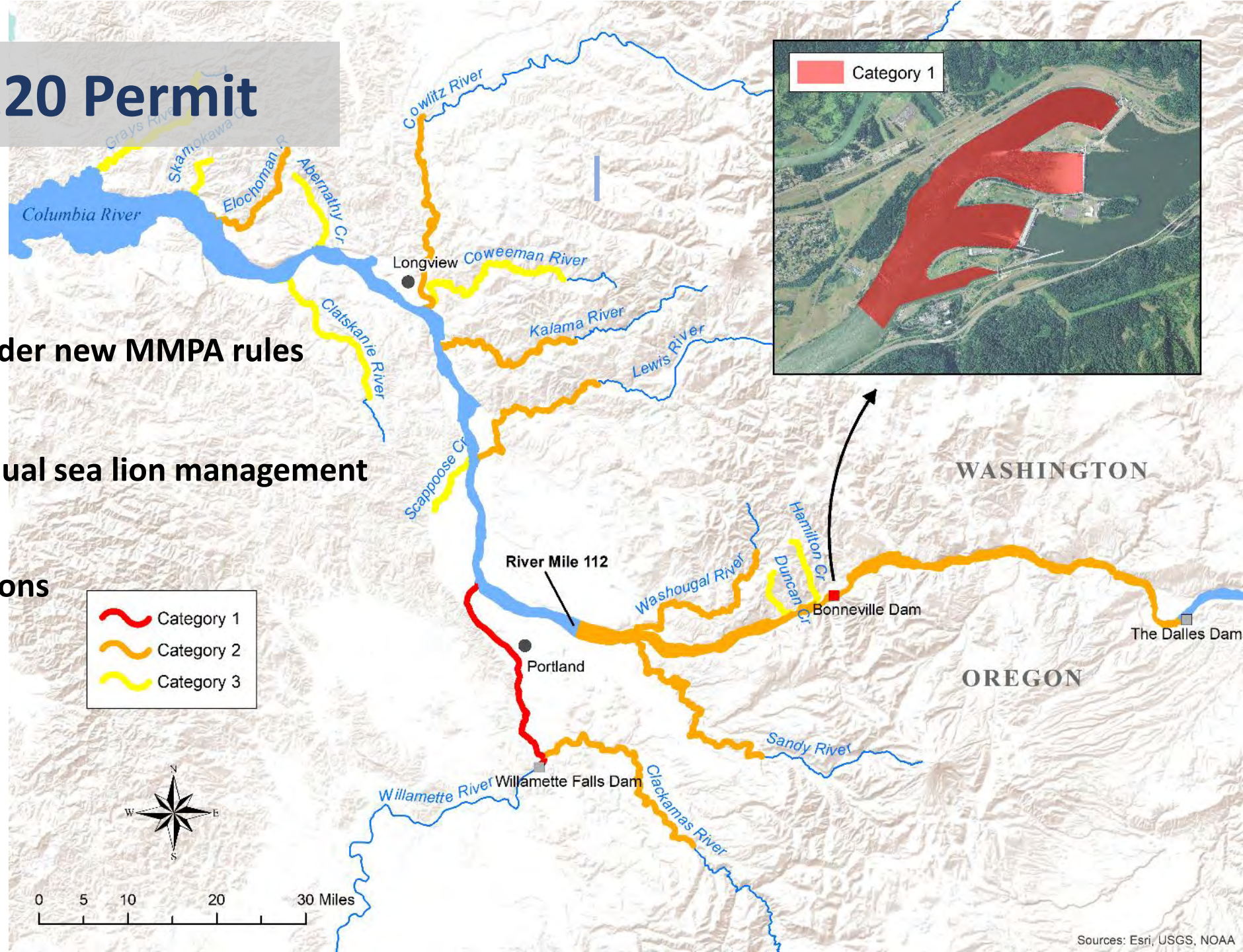
WILLAMETTE FALLS | REMOVAL DECREASES PREDATION RATES



NEW Section 120 Permit

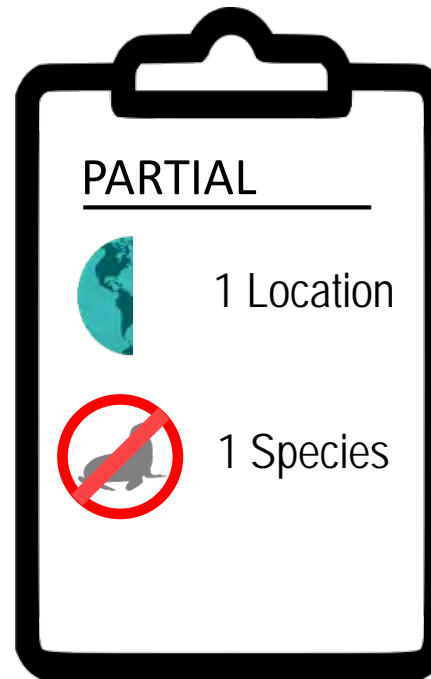
- States/Tribes applied under new MMPA rules
- Spatial mgmt. vs. Individual sea lion management
- California + Steller sea lions

Permit Process Timeline:
June ~ late 2020

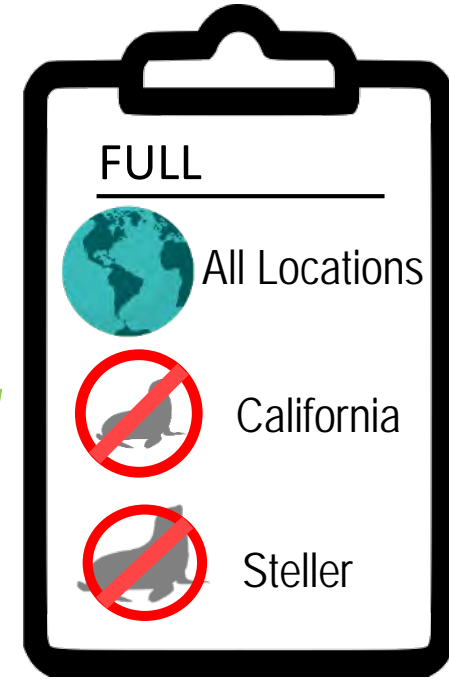


SEA LION MANAGEMENT

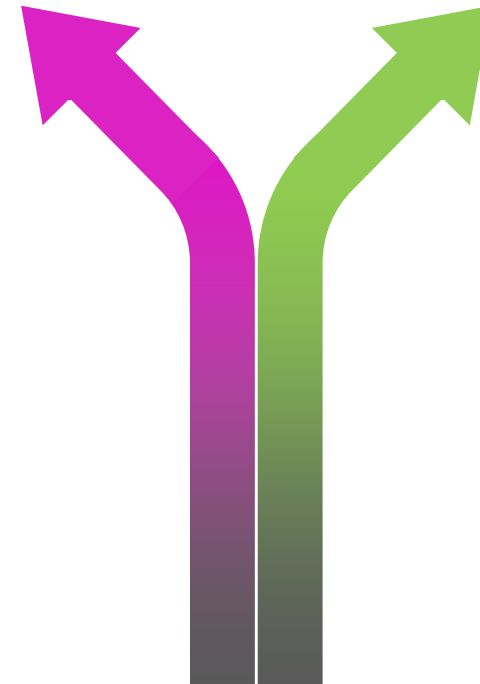
2020 & BEYOND



OLD RULES



NEW RULES





Questions?