

Science, Service, Stewardship



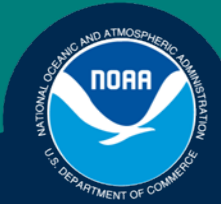
Protected Resources Presentation to PSMFC

Jim Lecky

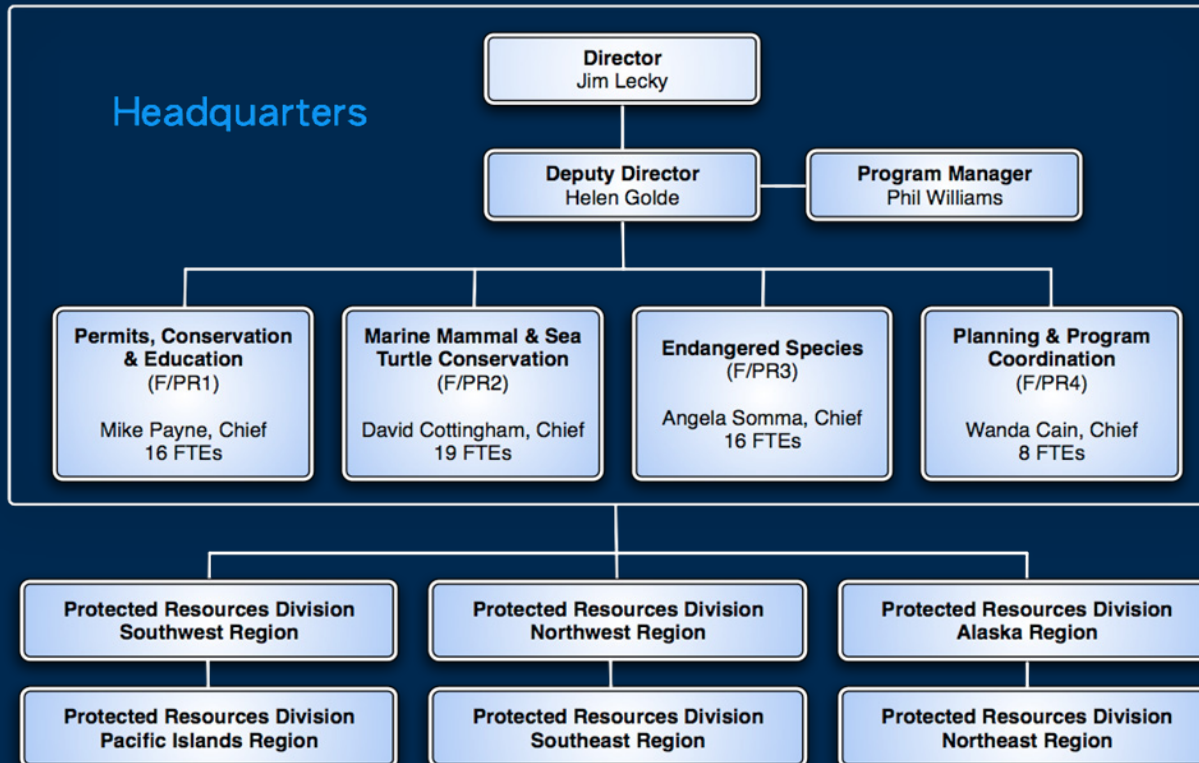
Director, NMFS Office of Protected Resources

September 8, 2010

**NOAA
FISHERIES
SERVICE**



NOAA Fisheries Service Office of Protected Resources Structure and Function





Agency Responsibilities

ESA –

- Provide a program for the conservation of threatened and endangered species
- Provide a means whereby the ecosystems upon which endangered and threatened species depend may be conserved



Tools for Conservation

- Listing
- Enforce Prohibition on Take
- Interagency Consultation
- Manage exemptions
- Implement Regulations
- Recovery Plans/Take Reduction Plans
- State cooperation



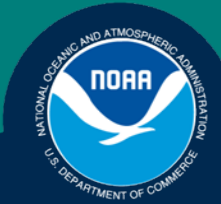


Petition and 90 Day Finding

Standard

- Reasonable person test
- Information contained in the petition or easily accessible in files
- Petitioners generally developing thorough petitions





Status Review

Lead Region/Center

Risk Assessment

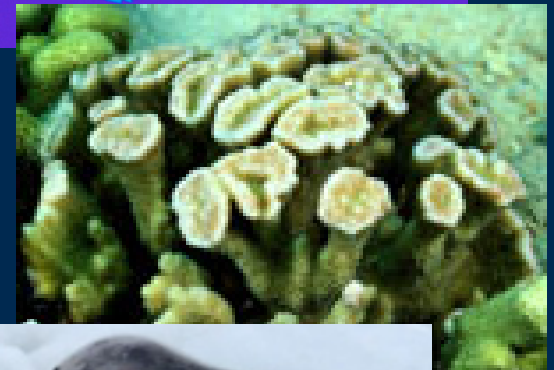
Expert Panel (BRT)

Defines risk of extinction

Relates risk to factors for listing

Risk Management (PECE)

Recommendation





ESA Listing / Delisting

- Petition (or self-initiated)
- 90-day finding
- Status review and peer review
- 12-month finding/proposed rule
- Public comment and peer review
- Final rule
- Critical habitat designation
- § 4(d) if warranted

PETITION TO LIST 83 CORAL SPECIES UNDER THE ENDANGERED SPECIES ACT



Blue rice coral photo © Keoki Stender





Listing / delisting

Listing

- If warranted
- Notice and comment rule making

Delisting

- Recovered
- New information
- Extinct





Prioritization of Resources

Mandates

- Petition Management
- Interagency Consultation
- Court Orders

Affect our ability to prioritize





Prioritization of Resources

Delegations

- Regional Leads
- HQ Leads

Considerations

- Availability of Resources
- Magnitude of Risk/Effect
- Scope of Project
- Acceptability of delay





Status Reviews Underway

Ring Seals

Bearded Seals

Hawaii False Killer Whale

Corals

Bumphead Parrot Fish

Humpback whale

Blue Fin Tuna (West Atlantic)





Recent Listings

Cook Inlet Beluga whale E

Black Abalone E

Eulachon Southern DPS T

Rock Fish (Puget Sound Georgia Basin DPS)

Boccacio E

Canary T

Yellow eye T

Loggerhead Turtles (9 DPSs) P



Critical Habitat

Cook Inlet Beluga Whale



Leatherback Turtle



**NOAA
FISHERIES
SERVICE**



Critical Habitat

Hawaiian Monk seal

Eulachon

Rock Fish



Interagency Challenges

Water



Fisheries

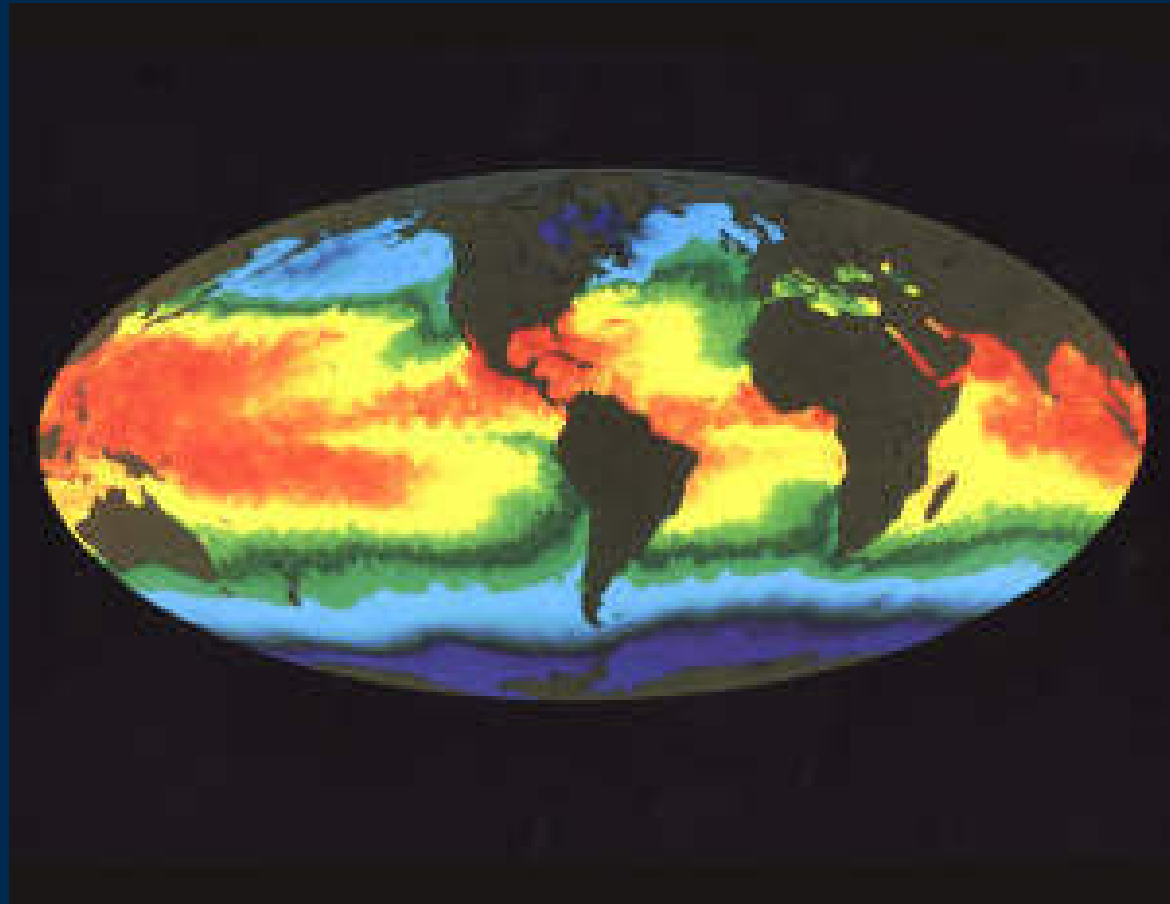


Pesticides





Climate Change



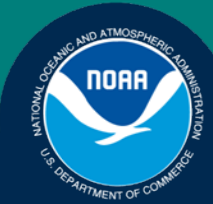


Climate Change

Do we have to consult on green house emissions?

- Bush rule
- Obama review
- FWS Polar Bear Rule





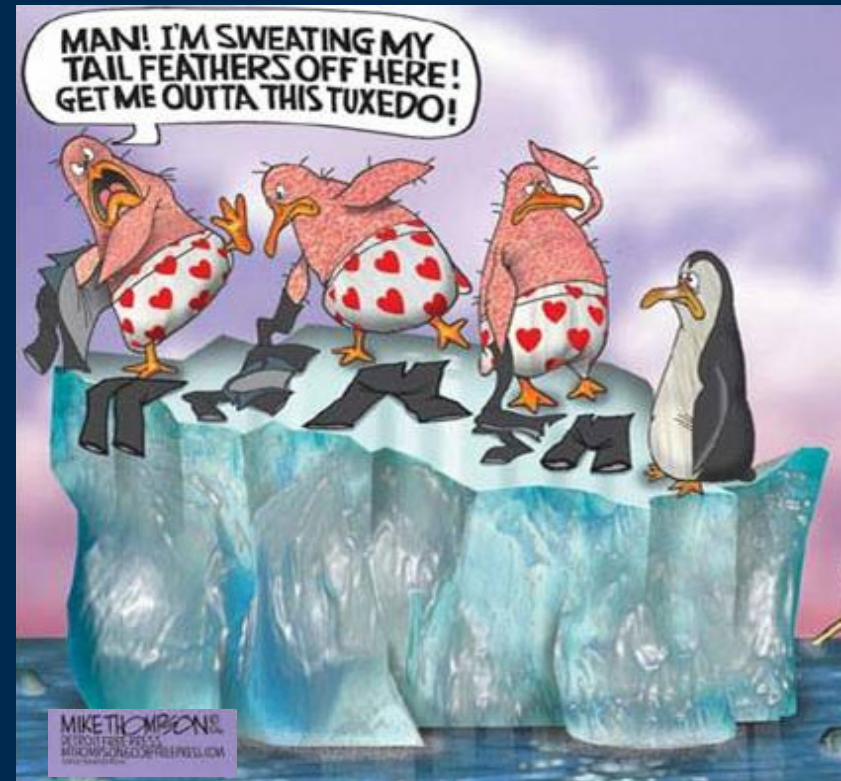
A word on Climate Change “Adaptation”

NMFS workshops

- Review case studies
- Identify best practices

Collaboration with Climate office

- Modeling future conditions
- Characterize resiliency



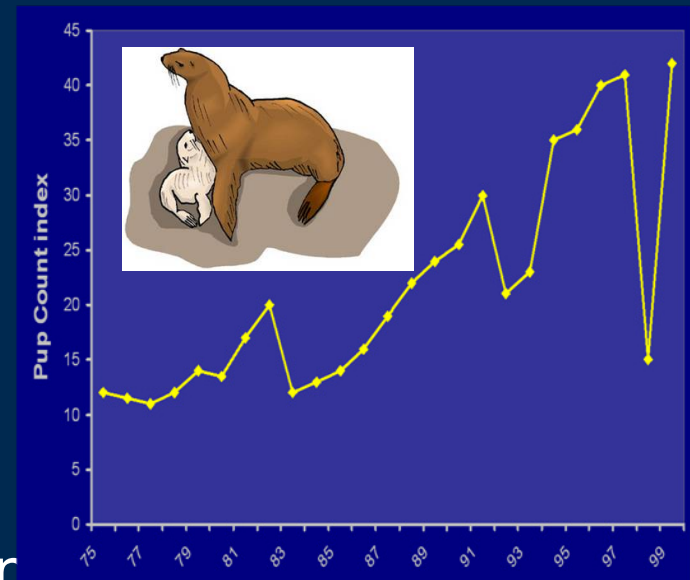


MMPA

Agency Responsibilities

[marine mammals] should be encouraged to develop to the greatest extent feasible commensurate with sound policies of resource management (OSP)

The primary objective ... to maintain the health and stability of the marine ecosystem





Tools for Conservation

- Enforce Moratorium on Take
- Trade restrictions
- Manage PBR/TRT
- Permits and Authorization
- Public Display
- Health and Stranding Response





Hot Topics

Ocean Noise



Energy



False Killer Whale TRT



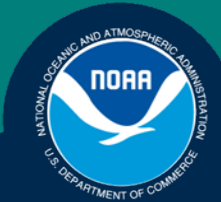
**NOAA
FISHERIES
SERVICE**



THE END

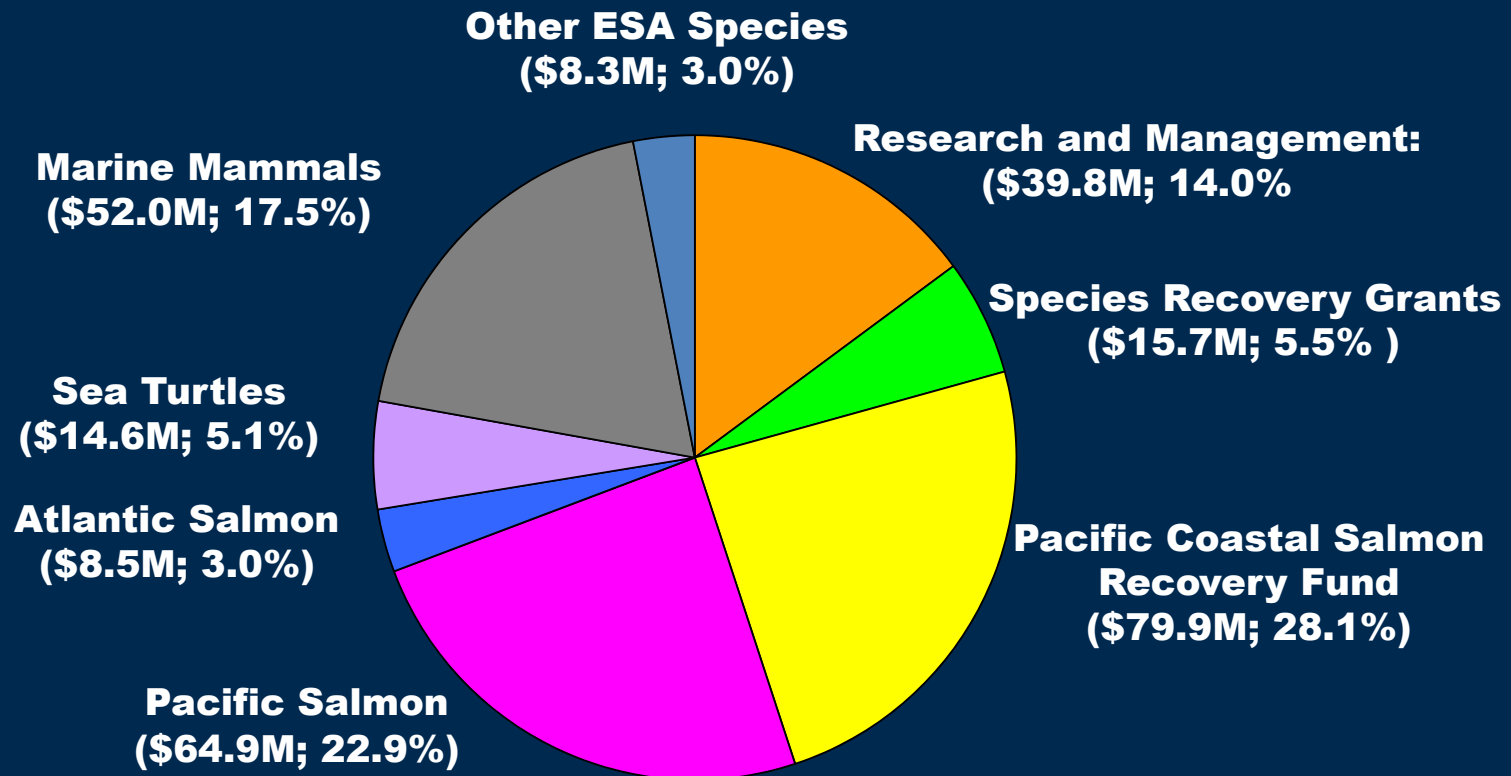


Thank you



Protected Resources Program

FY2010 Enacted (\$ 283.7M)



**NOAA
FISHERIES
SERVICE**

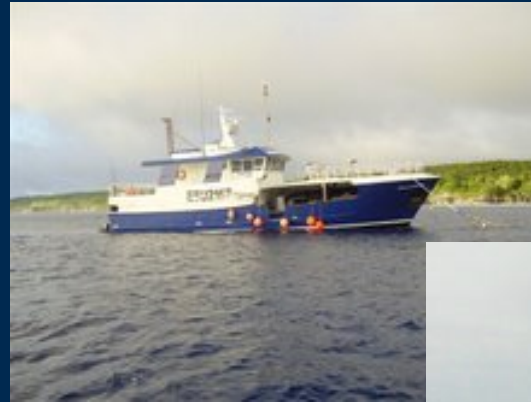




Fisheries Observers

Authority

- MSFCMA
 - Federal Fisheries
- MMPA
 - All Fisheries
 - § 118
- ESA
 - § 7 Federal Fisheries
 - § 10 State Fisheries





Fisheries Observers

- Statistics (2008):
 - 41 fisheries observed
 - Over 64,000 days at sea
 - 800 observers deployed
- Coverage
 - < 1% to 100%





Data Collected

■ Multi-purpose programs

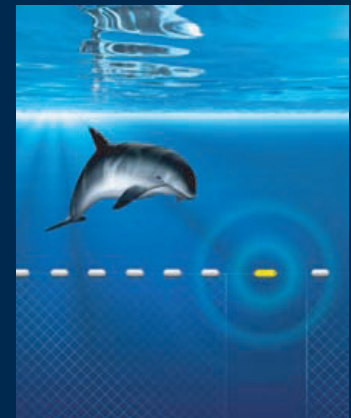
- Species composition
- Biological sampling
- Age and length
- Fishing effort, fishing gear
- Tag recapture information
- Habitat and environmental conditions





Data Uses

- Assessing impact of incidental take
- Monitoring levels on incidental take
- Informing Take Reduction Teams
- Development of mitigation measures
- Assessing effectiveness of mitigation measures





Data Reliability

Reliability

- Observers are well trained
- Data reviewed and quality controlled

Limitations

- Small sample sizes
- Low coverage = extrapolation
- Monitors could increase coverage