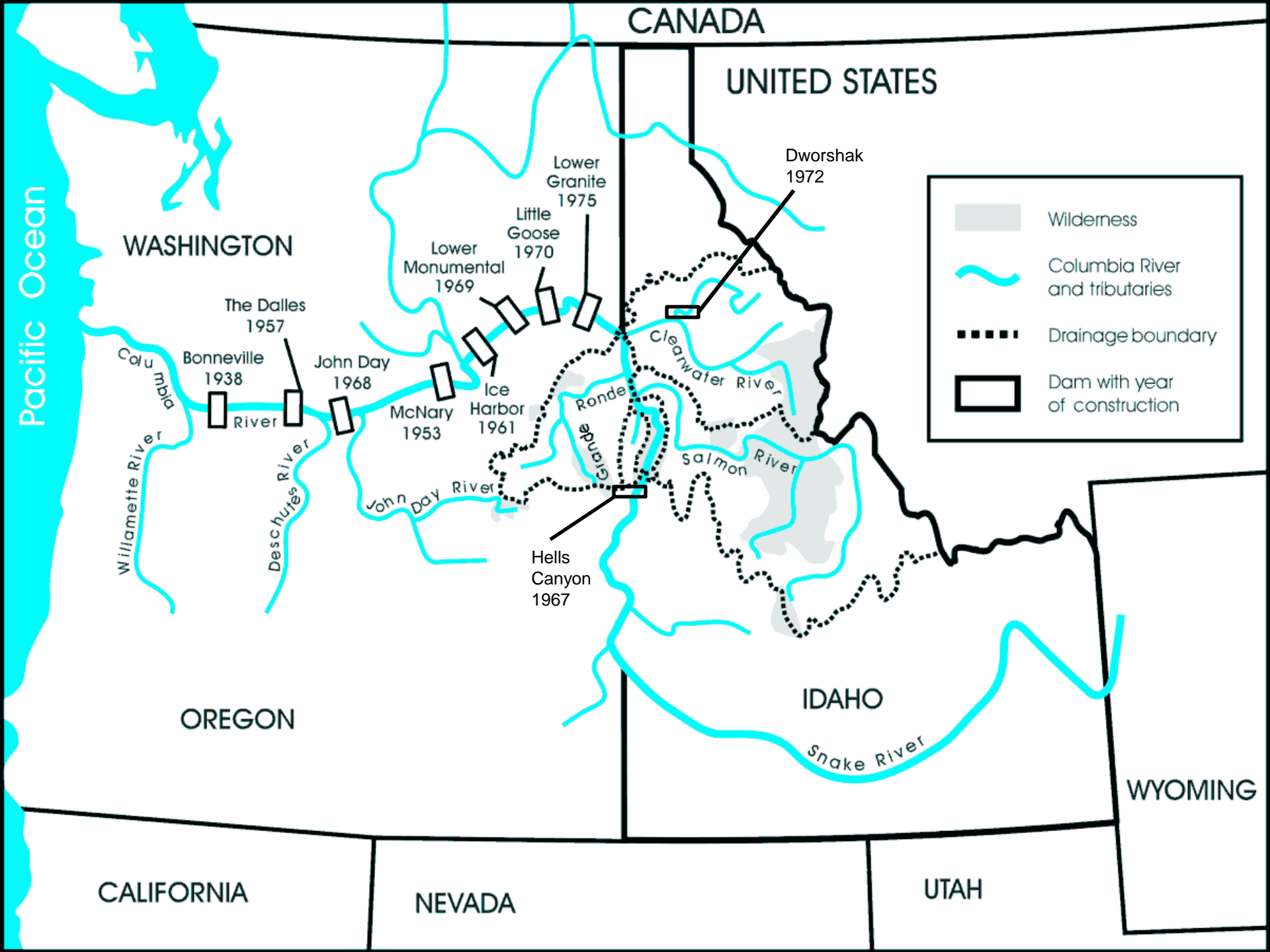
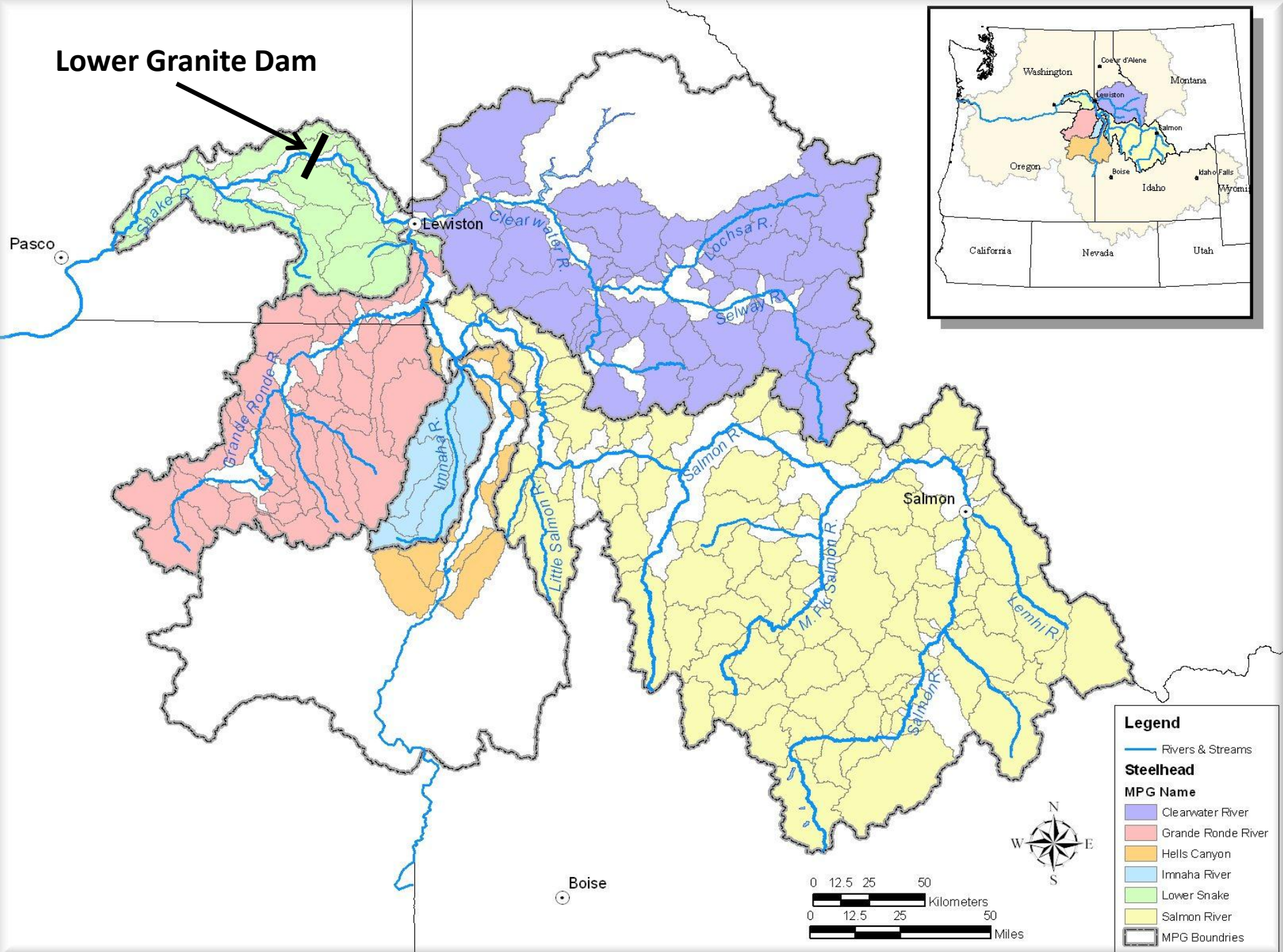


Idaho Steelhead status update - 2014



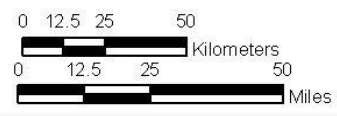


Lower Granite Dam



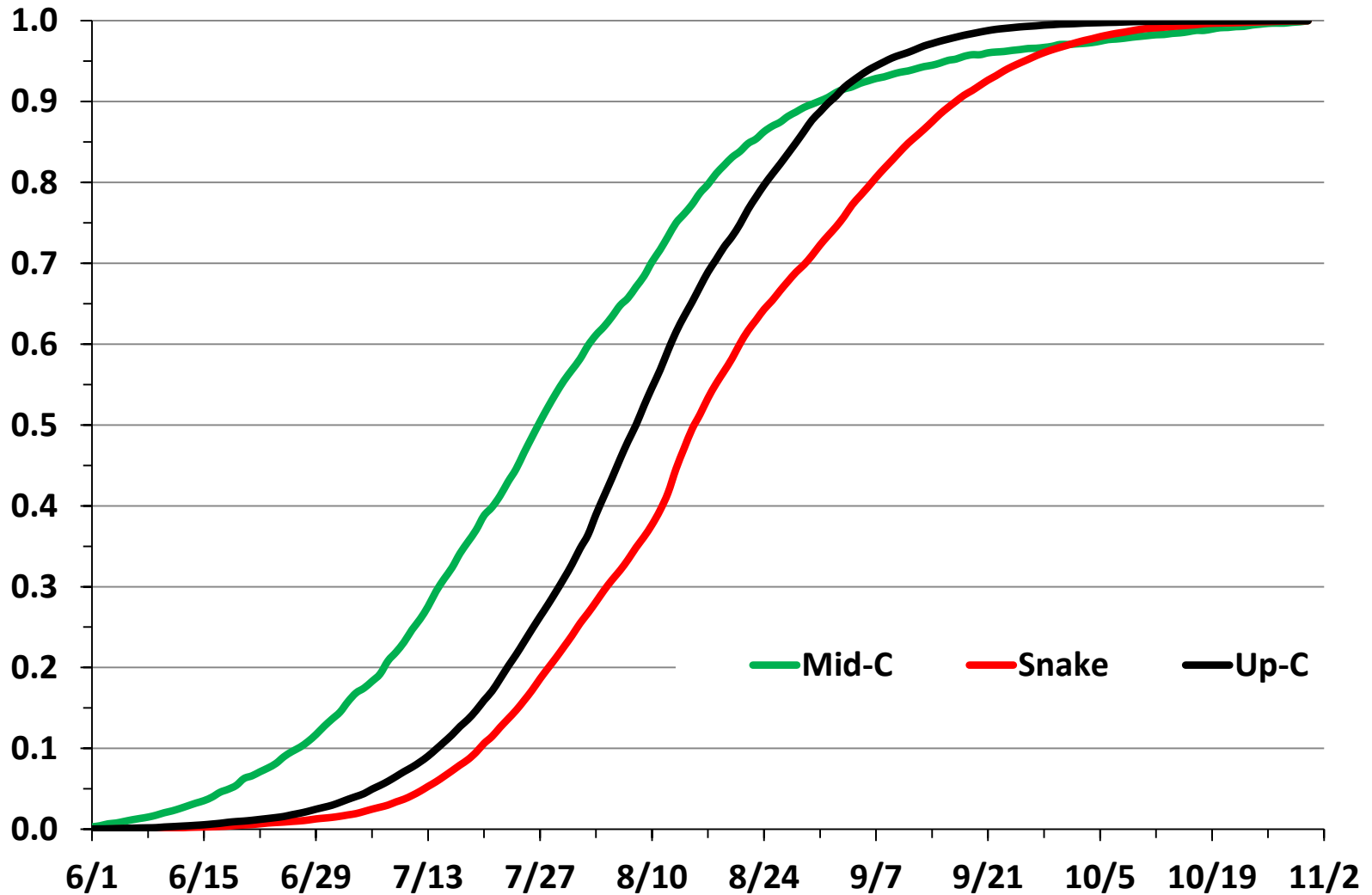
Legend

- Rivers & Streams
- Steelhead**
- MPG Name**
- Clearwater River
- Grande Ronde River
- Hells Canyon
- Imnaha River
- Lower Snake
- Salmon River
- MPG Boundries

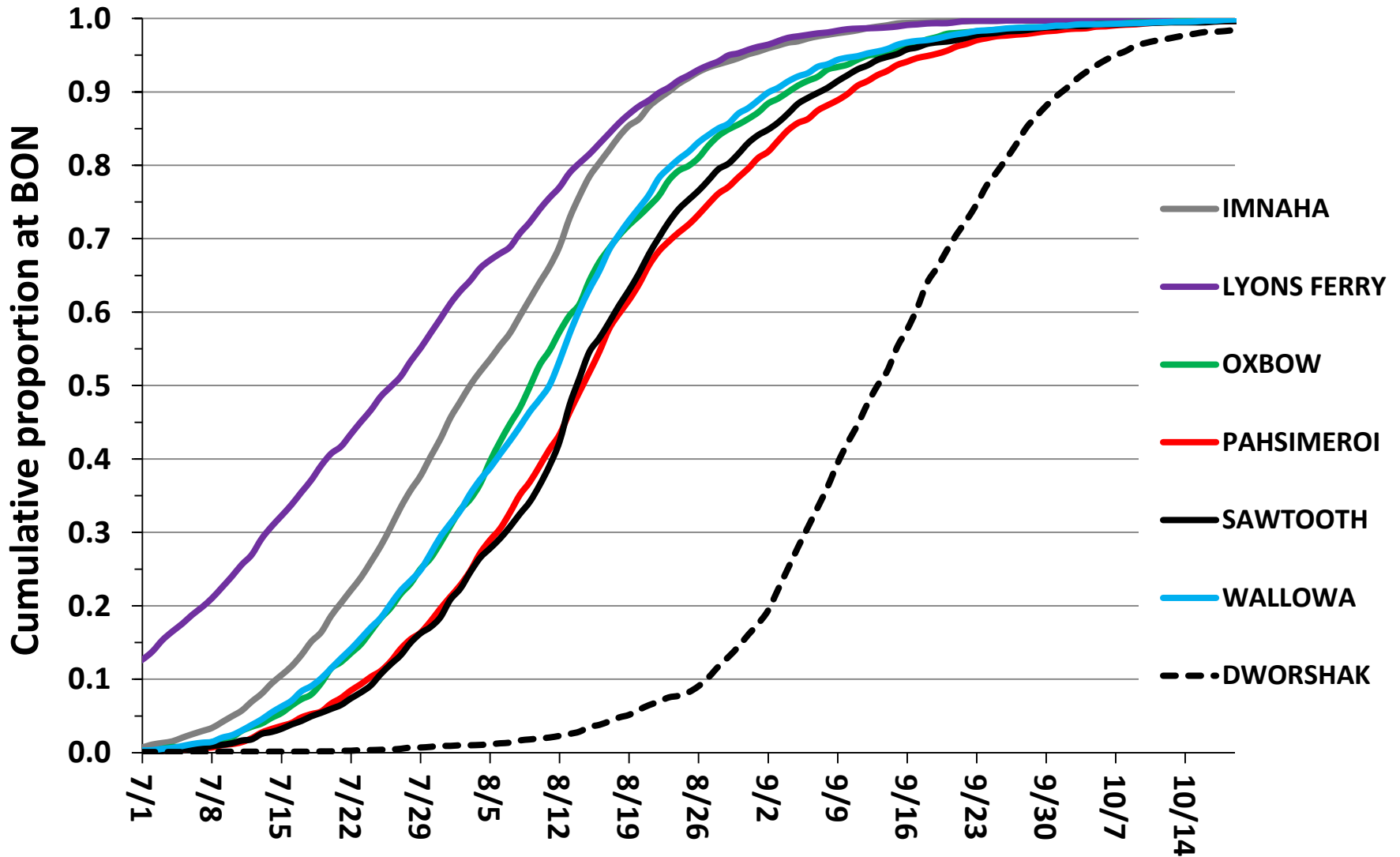


Boise

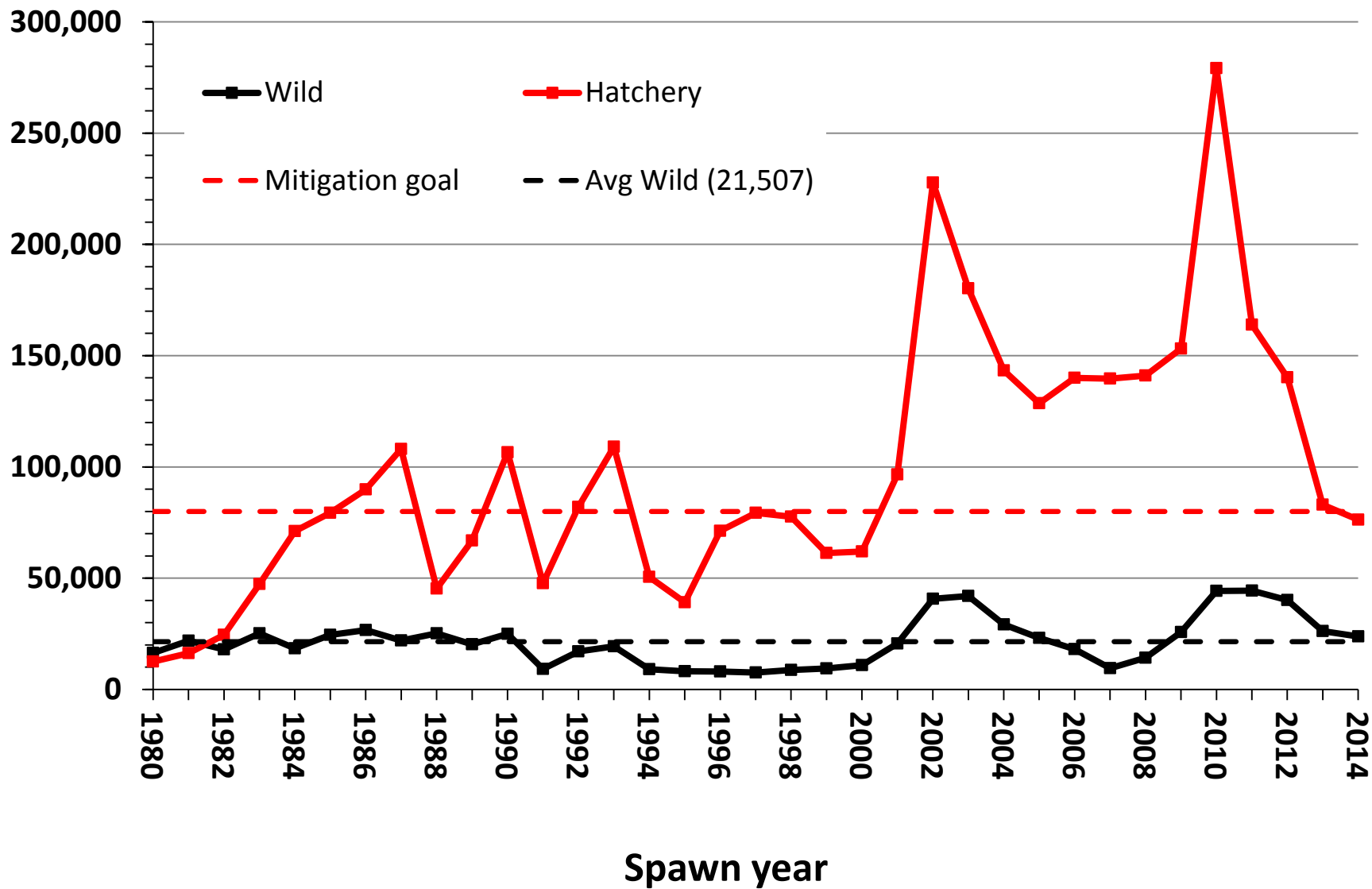
Hatchery Run-timing at Bonneville Dam



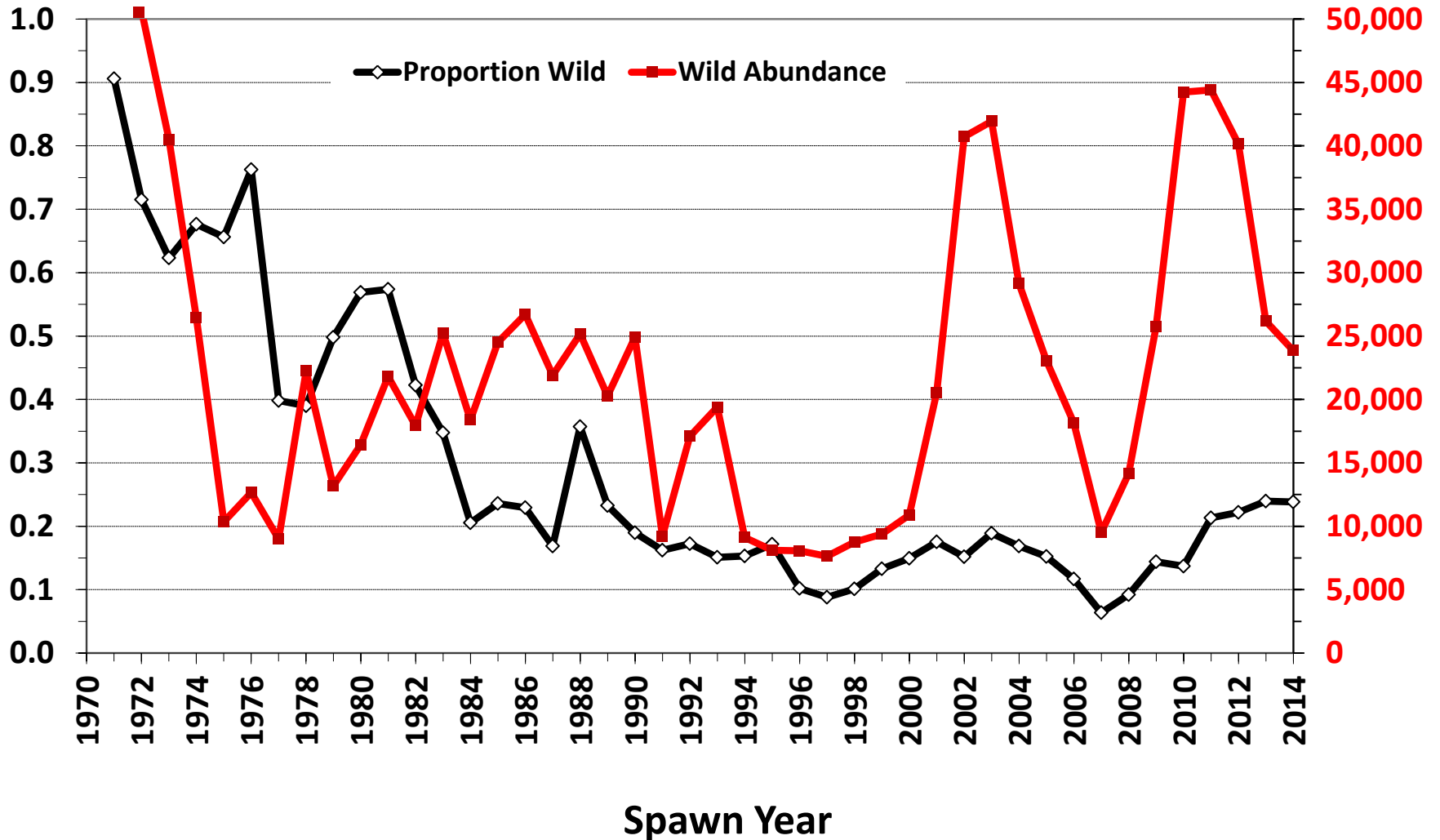
Snake River Hatchery Stock Run-timing at Bonneville Dam



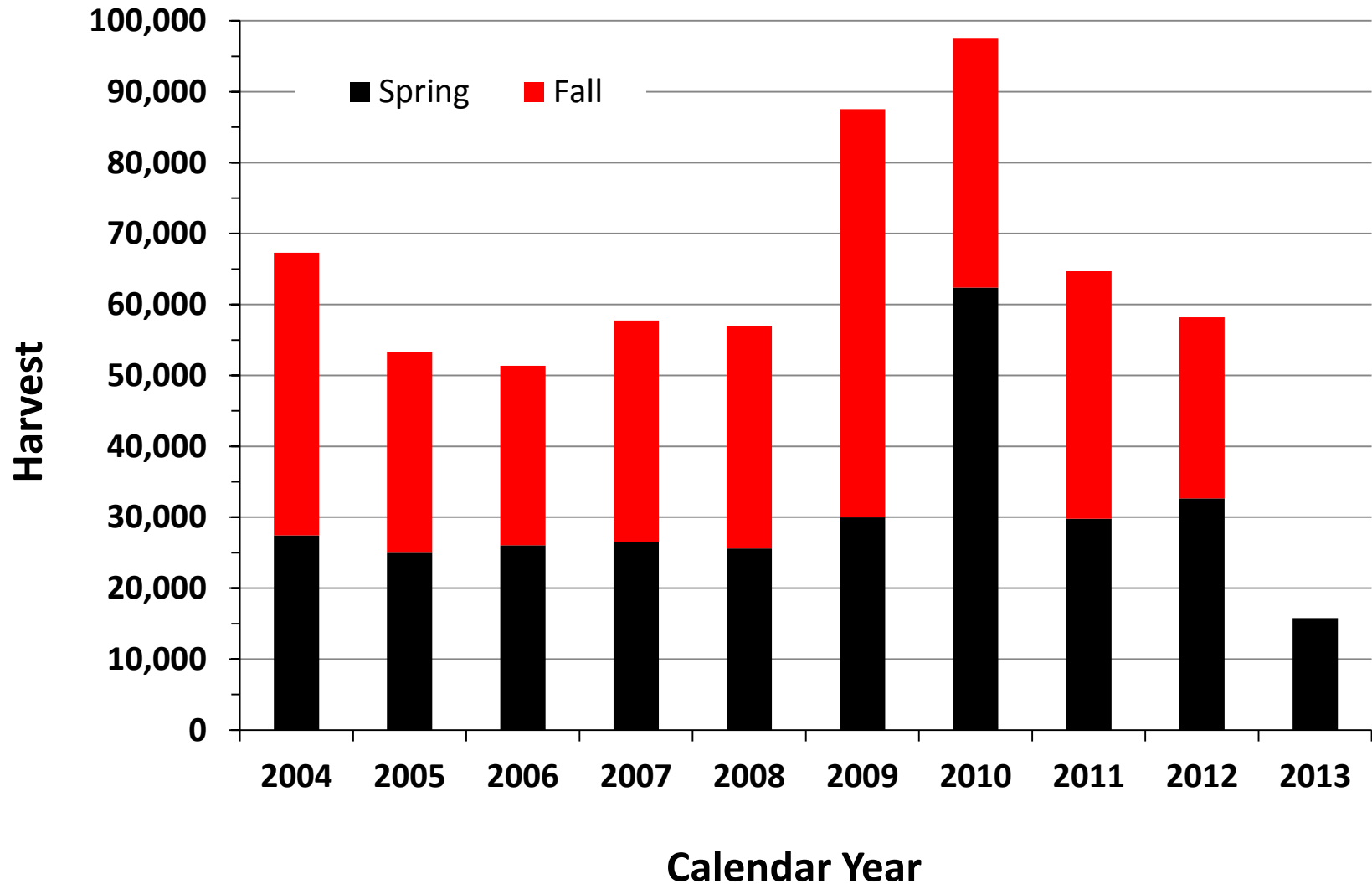
Steelhead return to Lower Granite Dam



Wild Steelhead at Lower Granite Dam

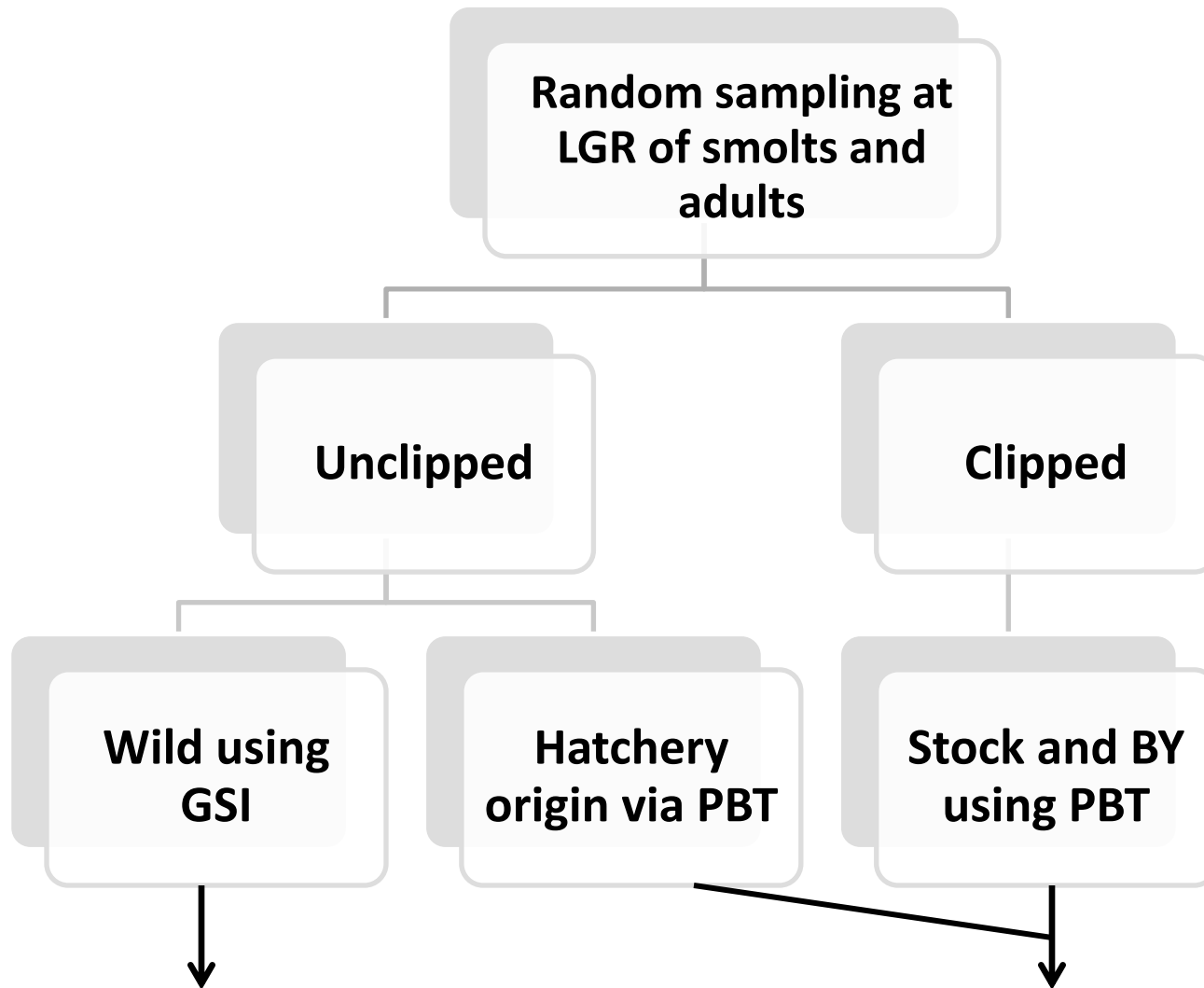


Statewide Idaho Steelhead Harvest



What was new in 2012 is now part of routine monitoring

1. Surface spillway weirs at all Snake River dams and McNary, John Day
2. Genetic sampling at Lower Granite Dam of smolts and adults
 - GSI on wild stocks. Can now report wild abundance by reporting group not just the total return to LGR
 - PBT for hatchery stocks and to estimate proportion of unclipped fish that are hatchery origin. All Snake River broodstock is genotyped.
 - Sex ratio
 - Run timing
 - Age composition (wild from scales)
3. Harvest estimates based on PBT for sport fisheries within Idaho. Have used PBT and GSI to estimate Snake River stock contribution in the Columbia River sport and tribal fisheries.
4. No more CWT's in steelhead (except for some hatchery broodstock management needs).



**Random sampling at
LGR of smolts and
adults**

Unclipped

Clipped

**Wild using
GSI**

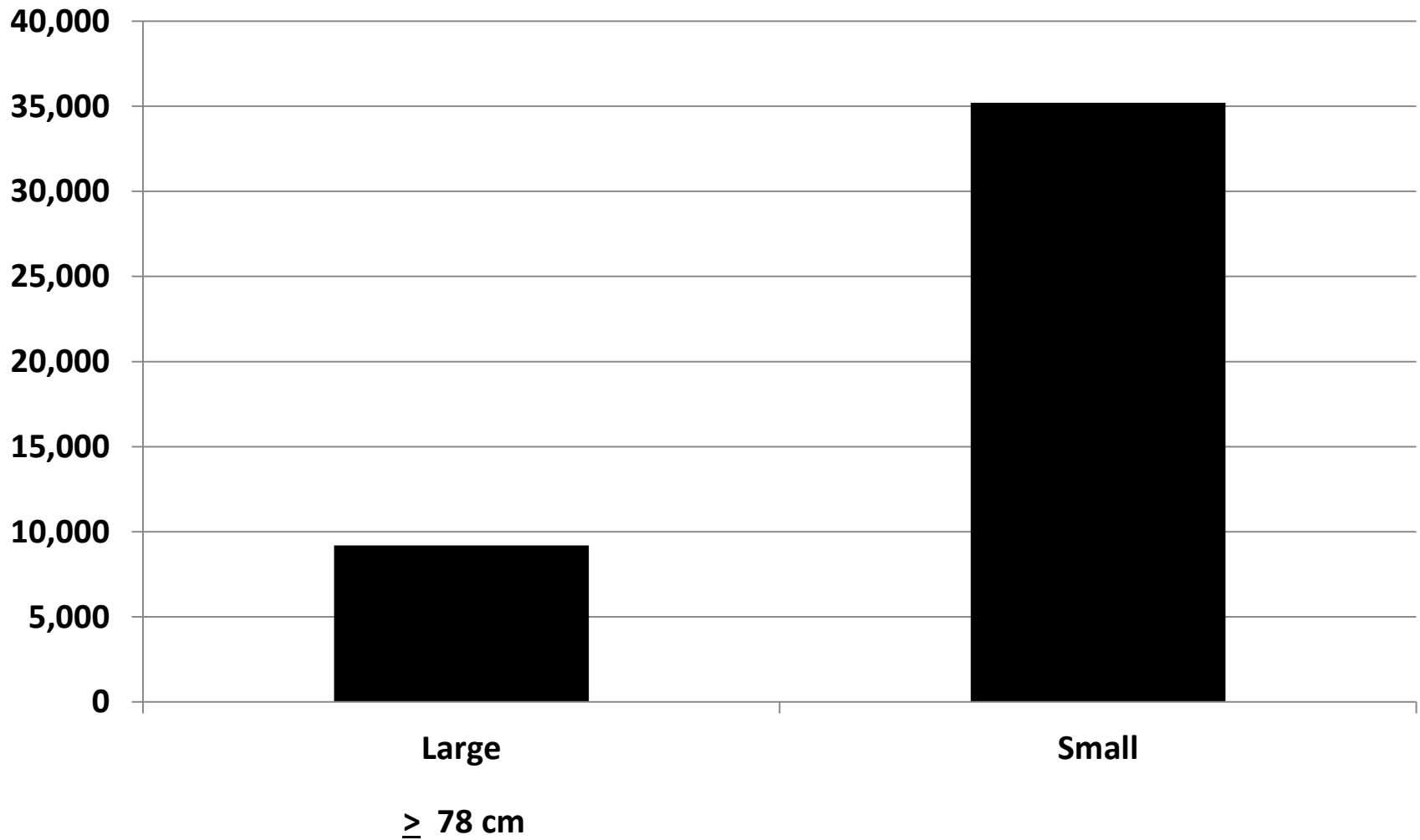
**Hatchery
origin via PBT**

**Stock and BY
using PBT**

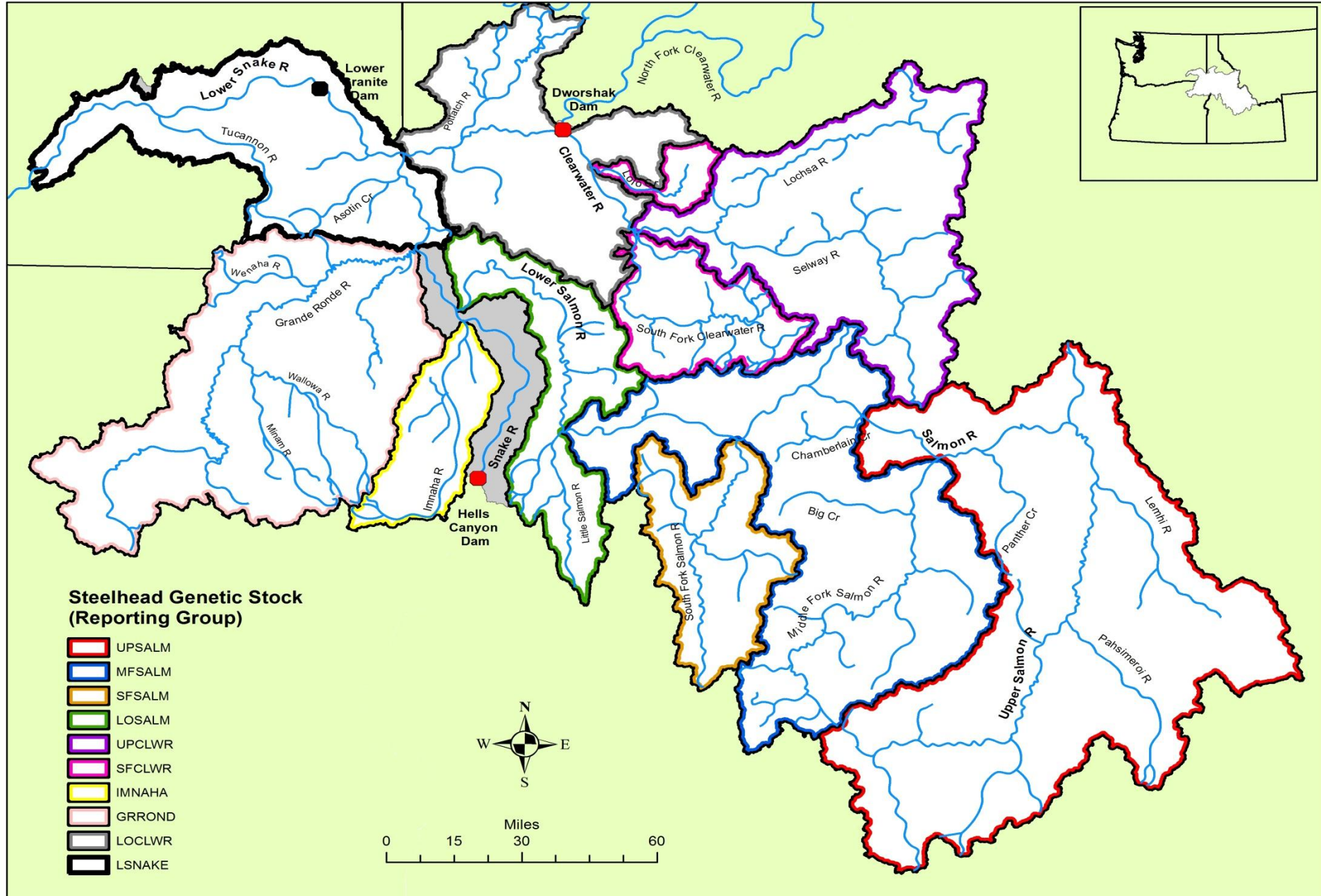
- 1. Estimate total wild passage**
- 2. Assign to 10 Reporting Groups using GSI**
- 3. Freshwater and Ocean Age from scale analysis**
- 4. Sex using genetic marker**

- 1. Estimate total hatchery passage**
- 2. Assign to Stock and BY using PBT**
- 3. Sex using genetic marker**

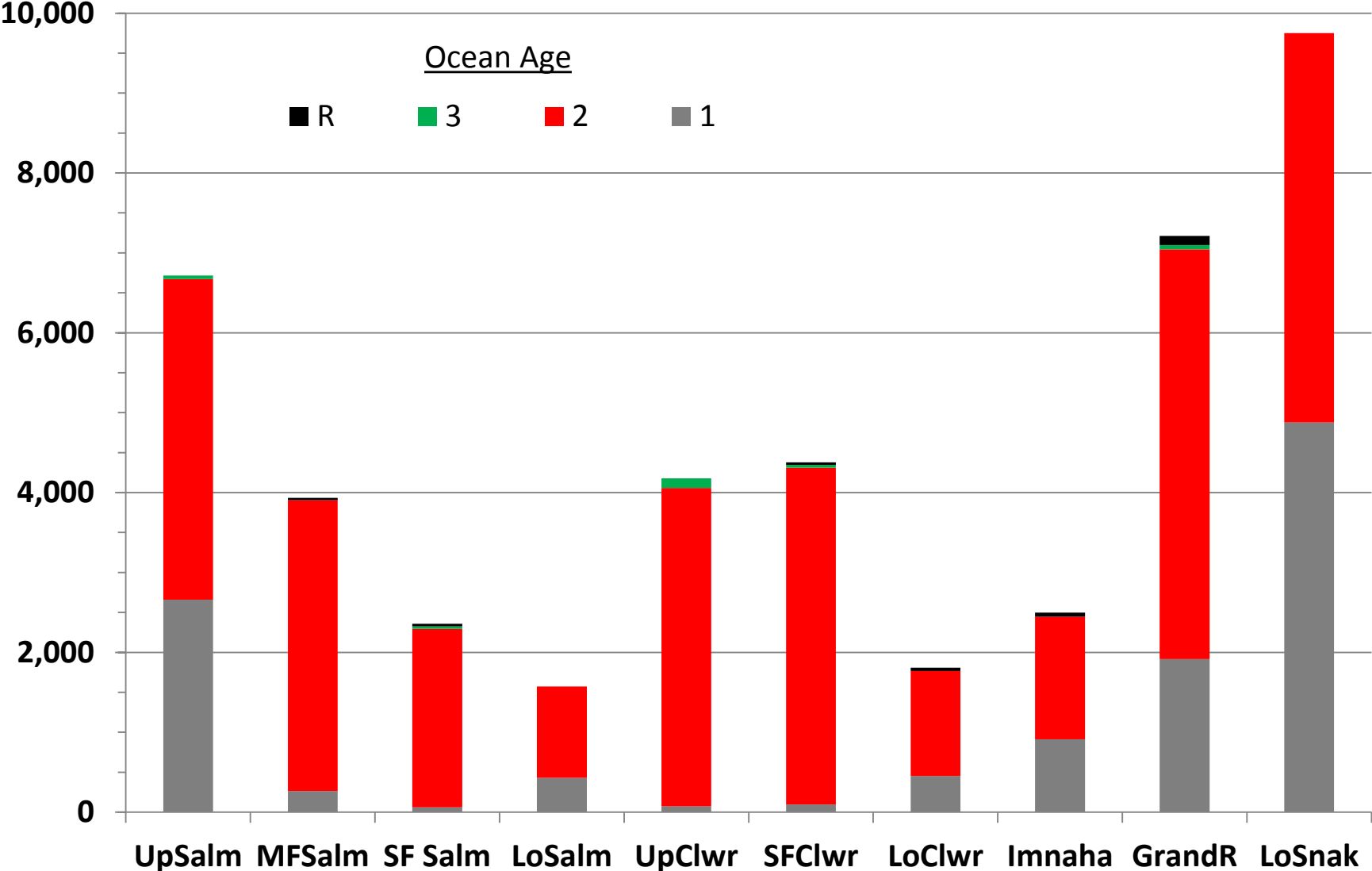
SY 2011 Wild adult composition at LGR- the old way



Snake River Steelhead Genetic stock groups



SY 2011 Wild adult composition at LGR- the new way



Stock composition of wild steelhead smolts at LGR – MY2011

