



Status of Steelhead in Oregon

Pacific Coast Steelhead
Management Meeting
Oregon Department of Fish and Wildlife
March 18, 2014

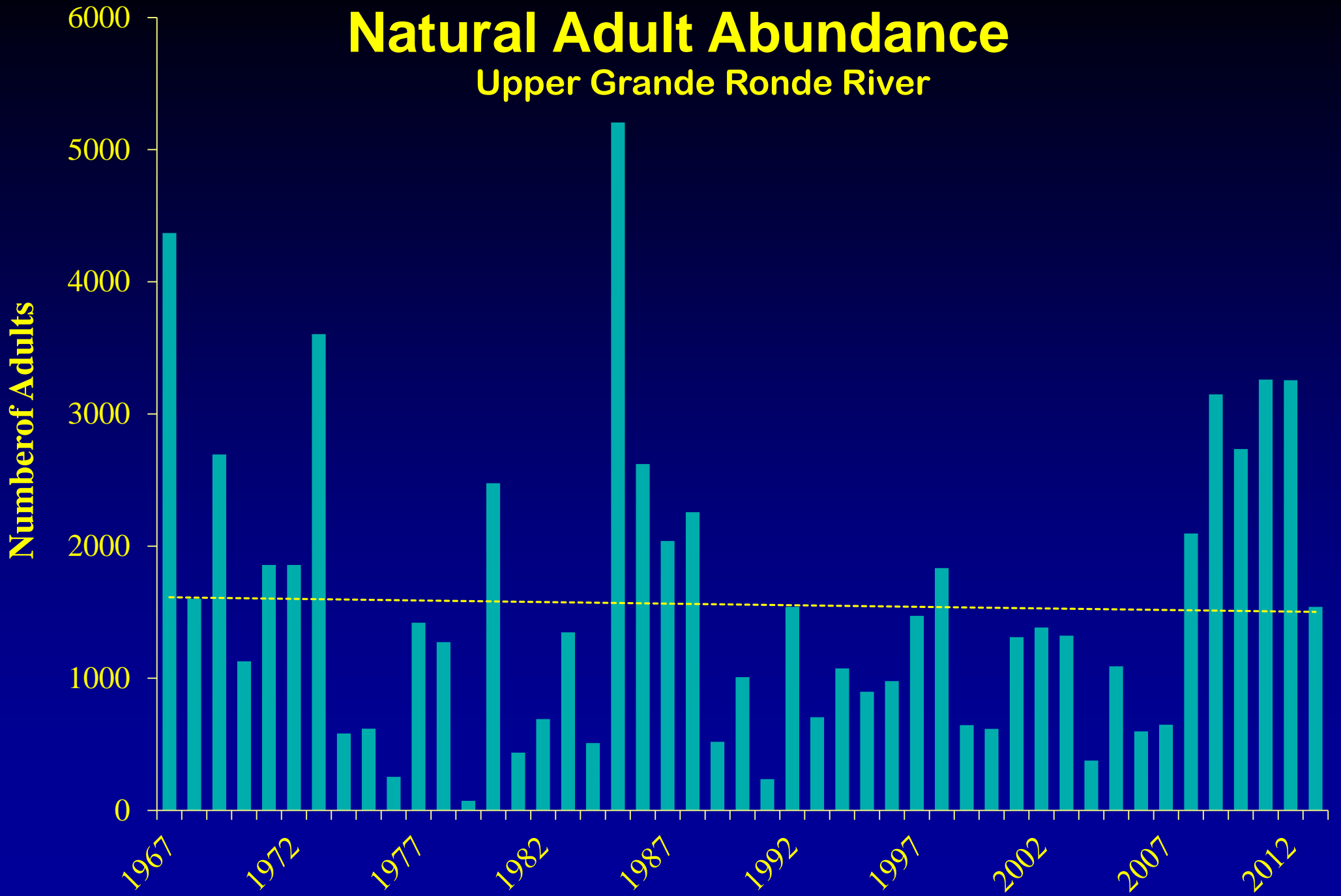


Distinct Population Segments (DPS)

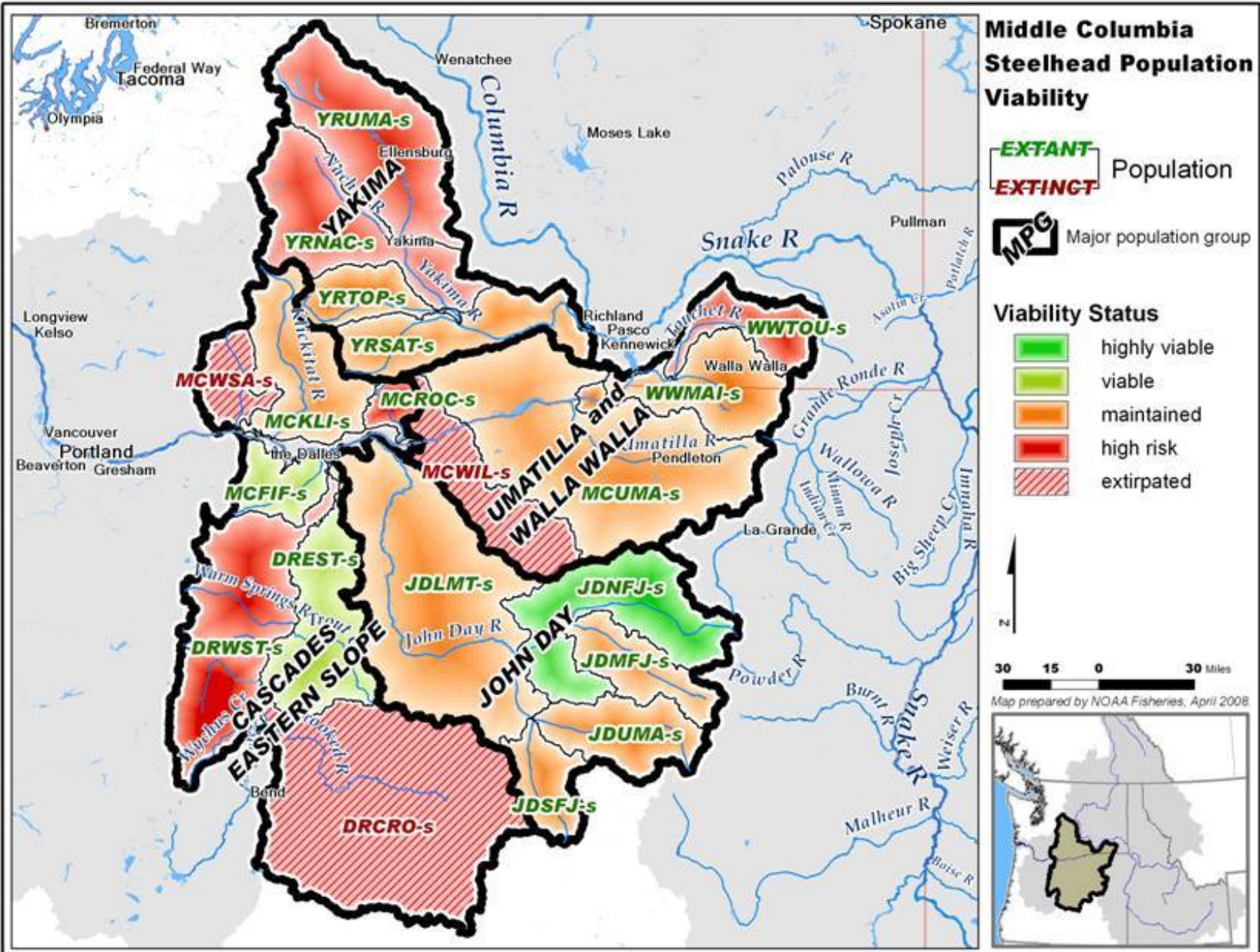


Natural Adult Abundance

Upper Grande Ronde River

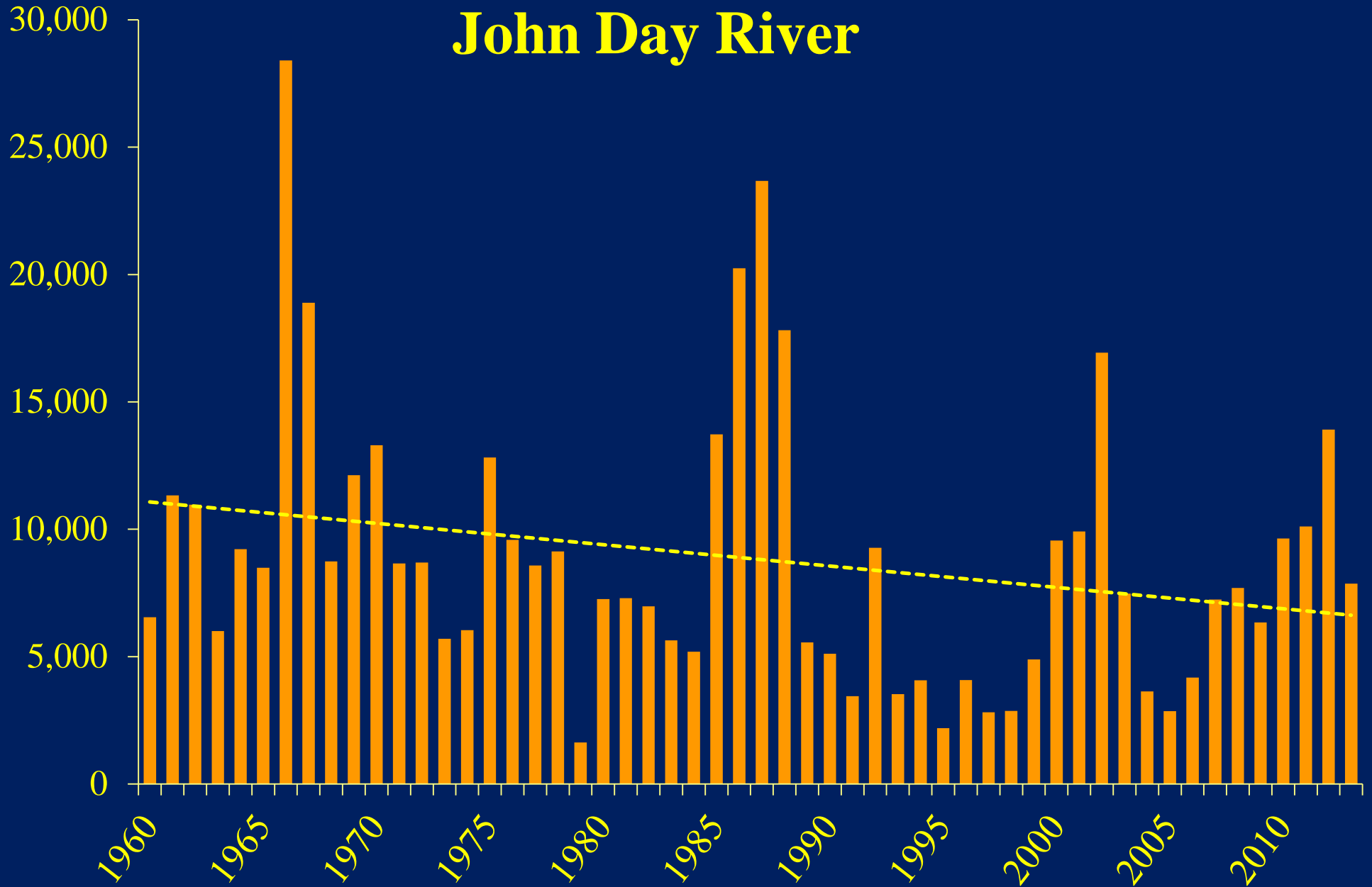


Mid-C Steelhead Current Status

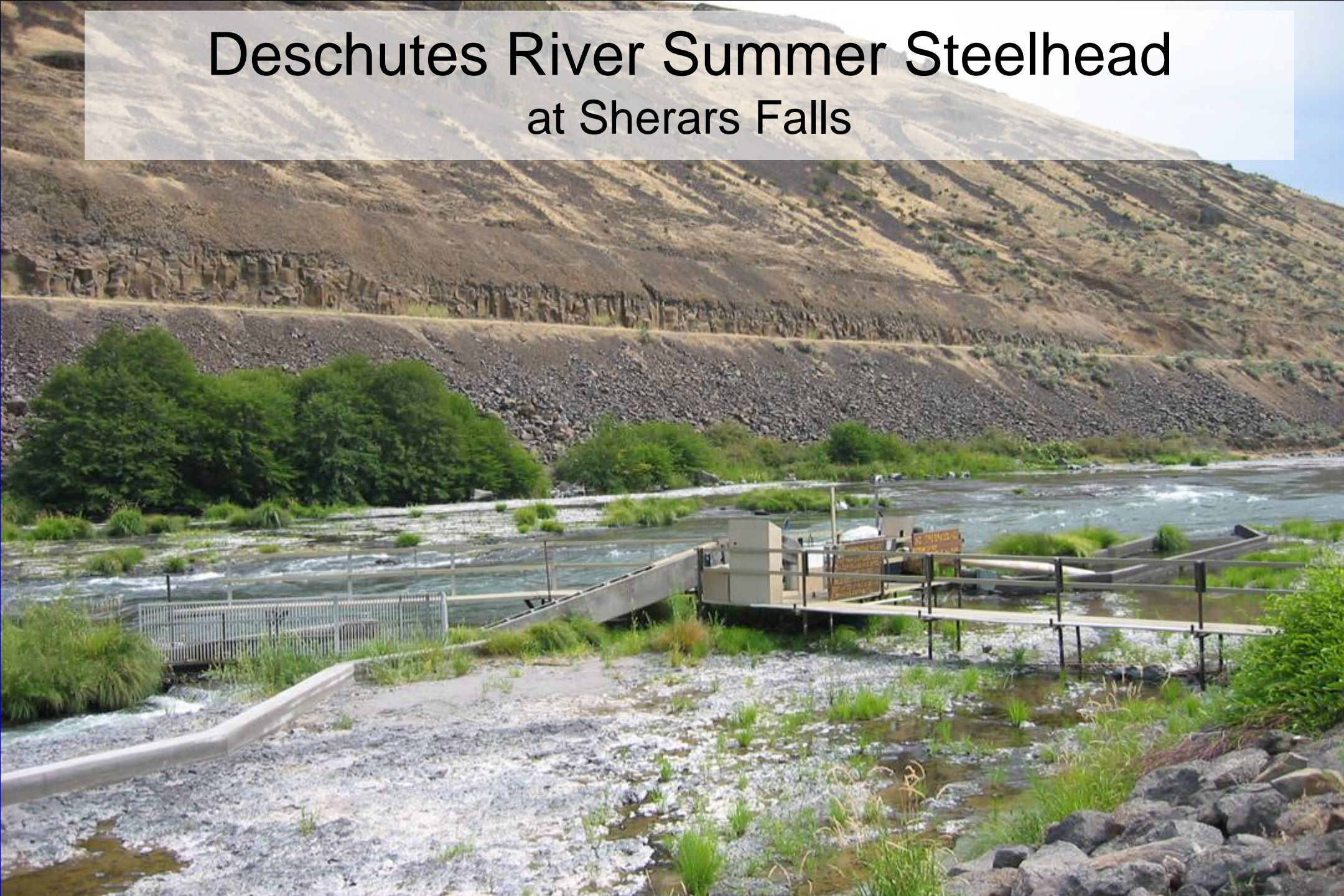


John Day River

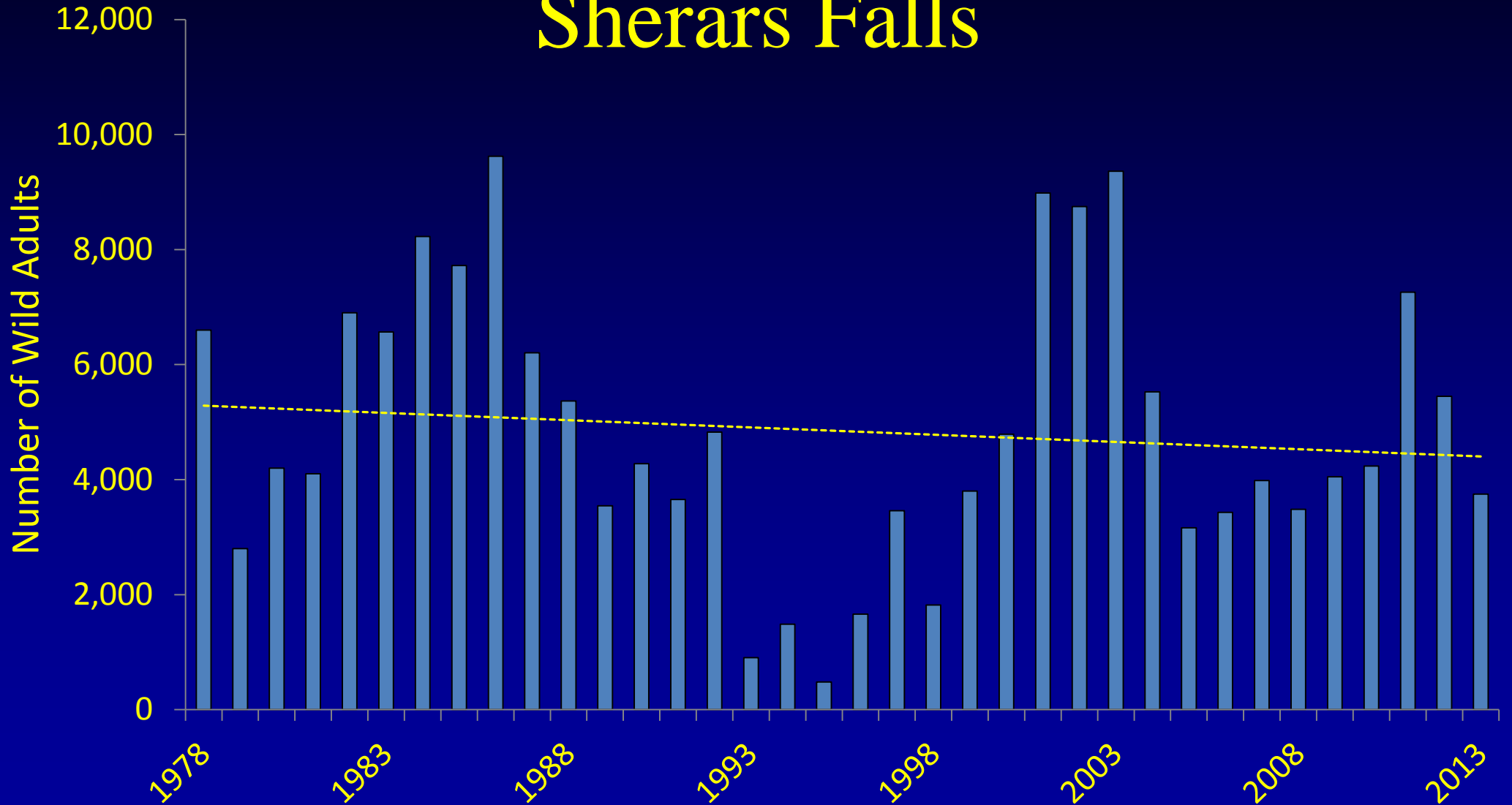
Estimated Wild Adults



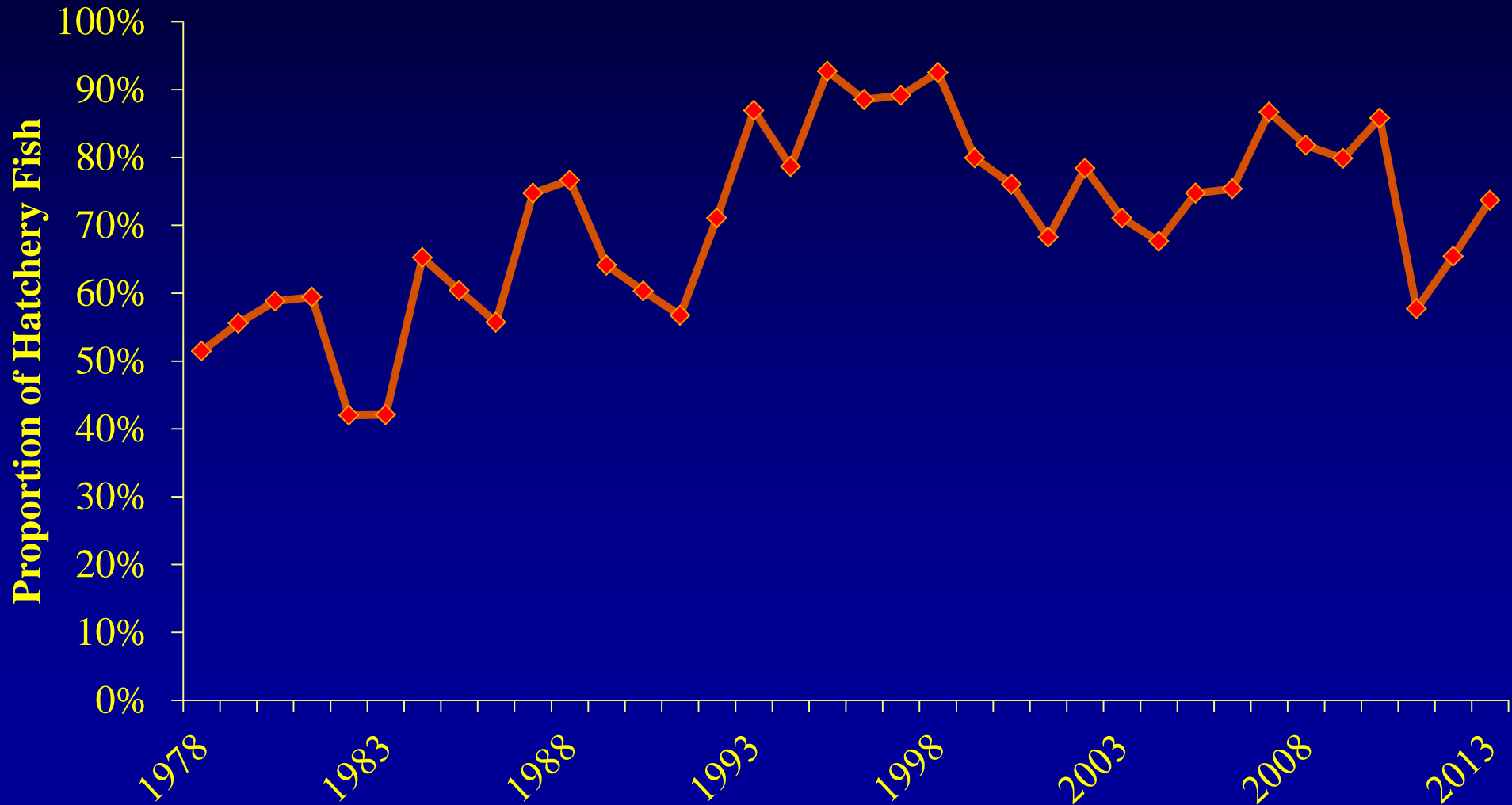
Deschutes River Summer Steelhead at Sherars Falls



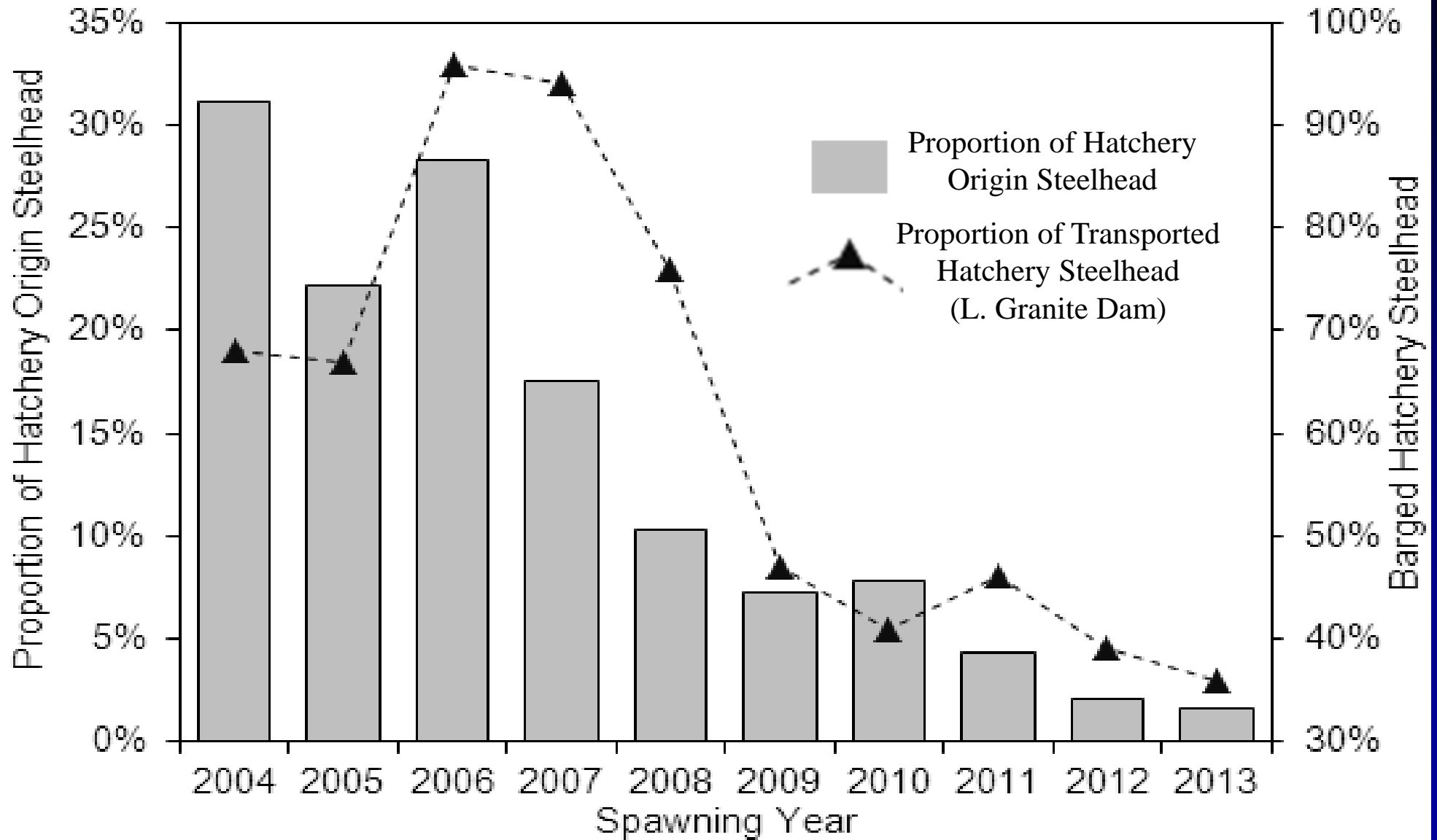
Deschutes River Summer Steelhead at Sherars Falls



Deschutes River Proportion of Hatchery at Sherars Falls



Strays into the John Day



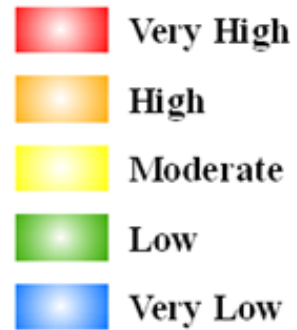
Lower Columbia DPS

Current Status

Winter Steelhead



RISK

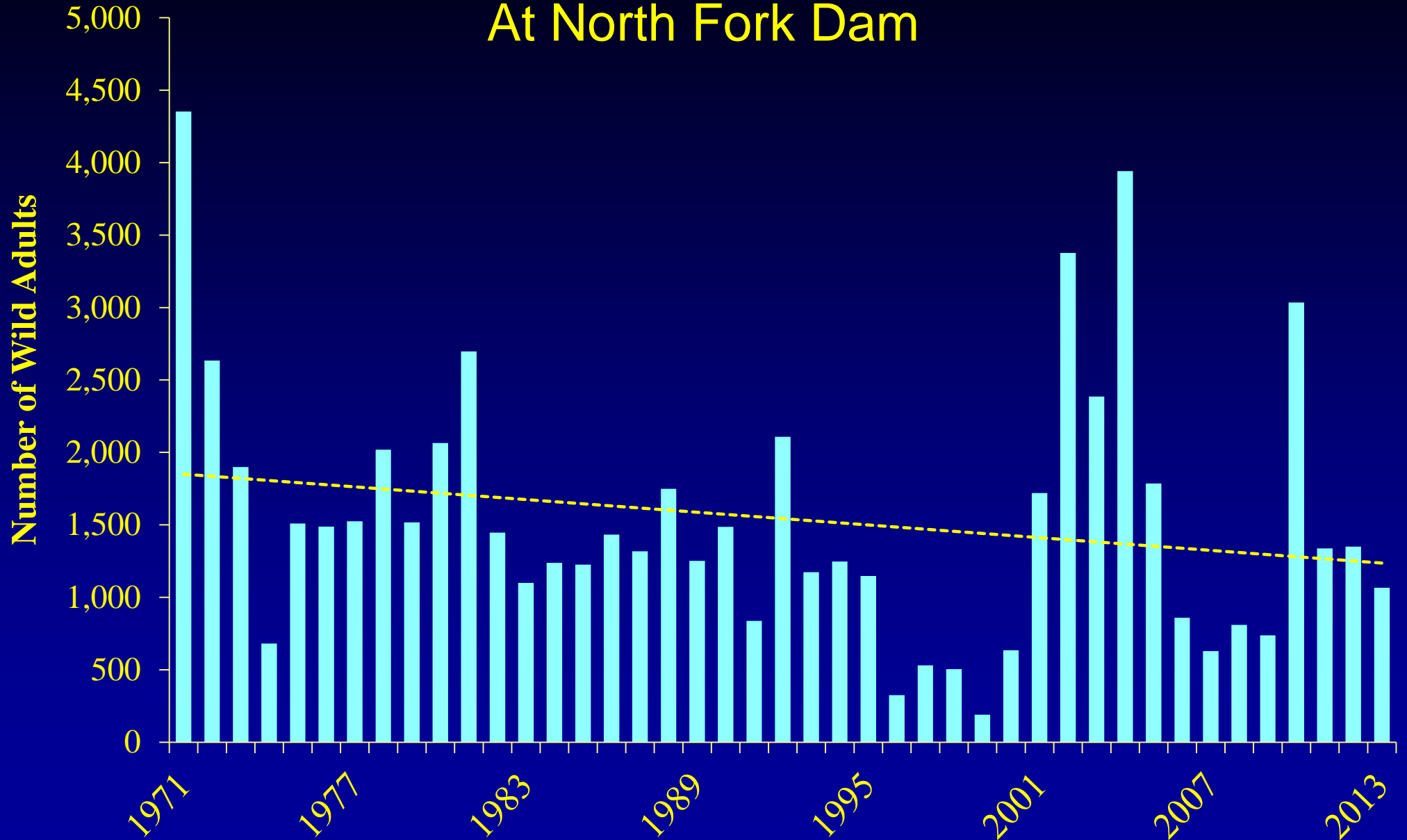


Summer Steelhead

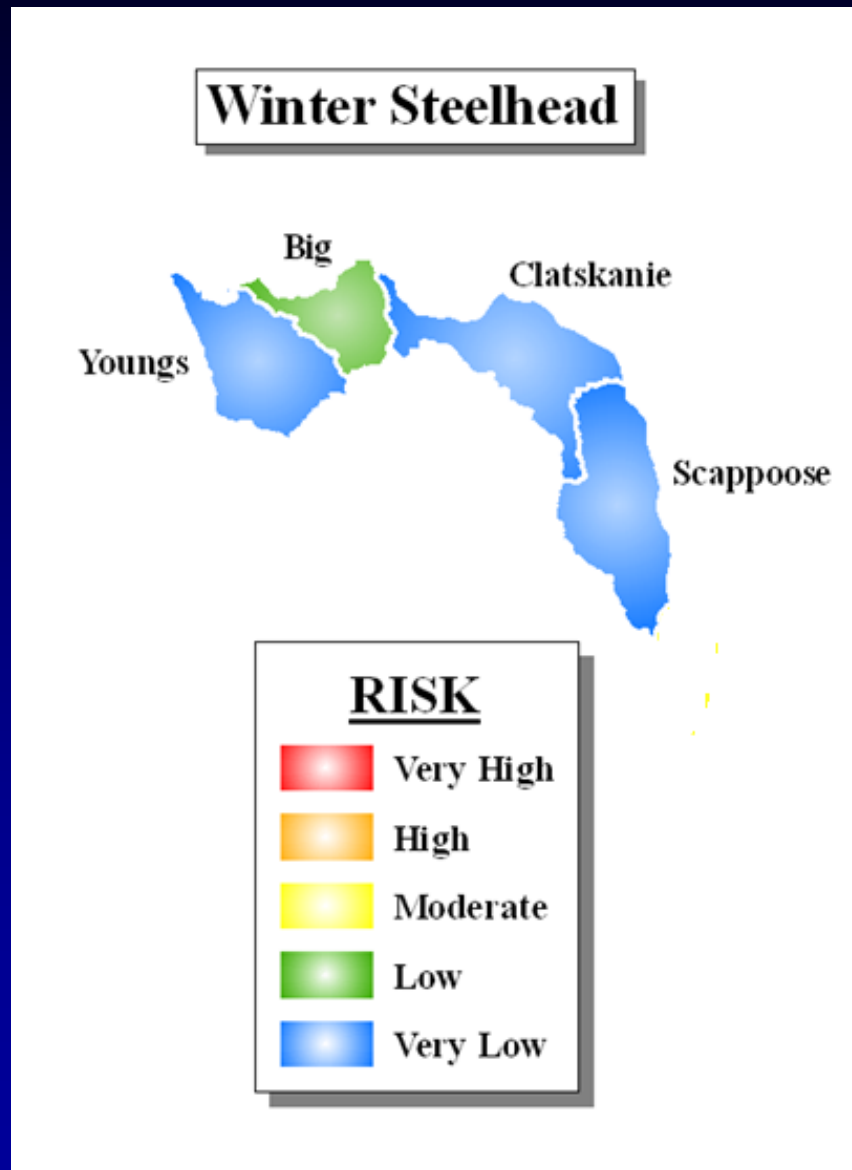


Clackamas Winter Steelhead

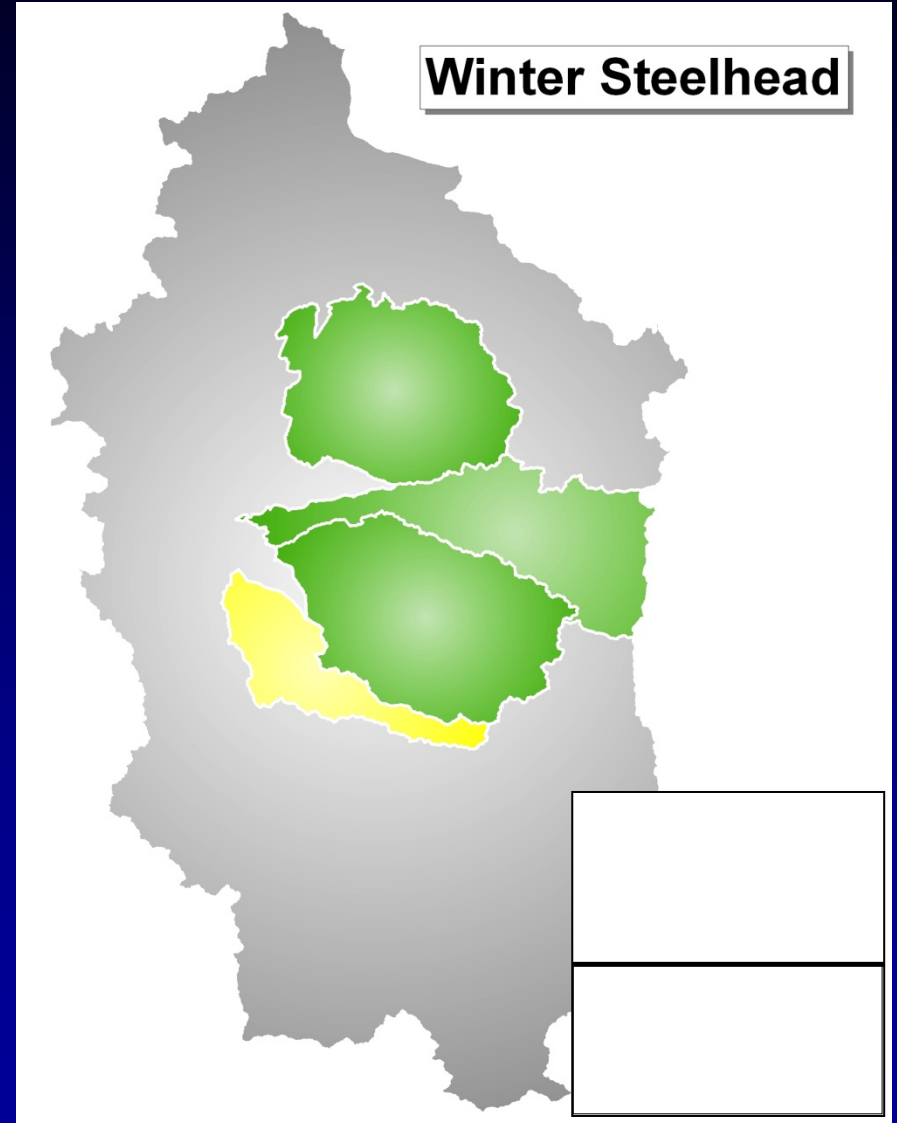
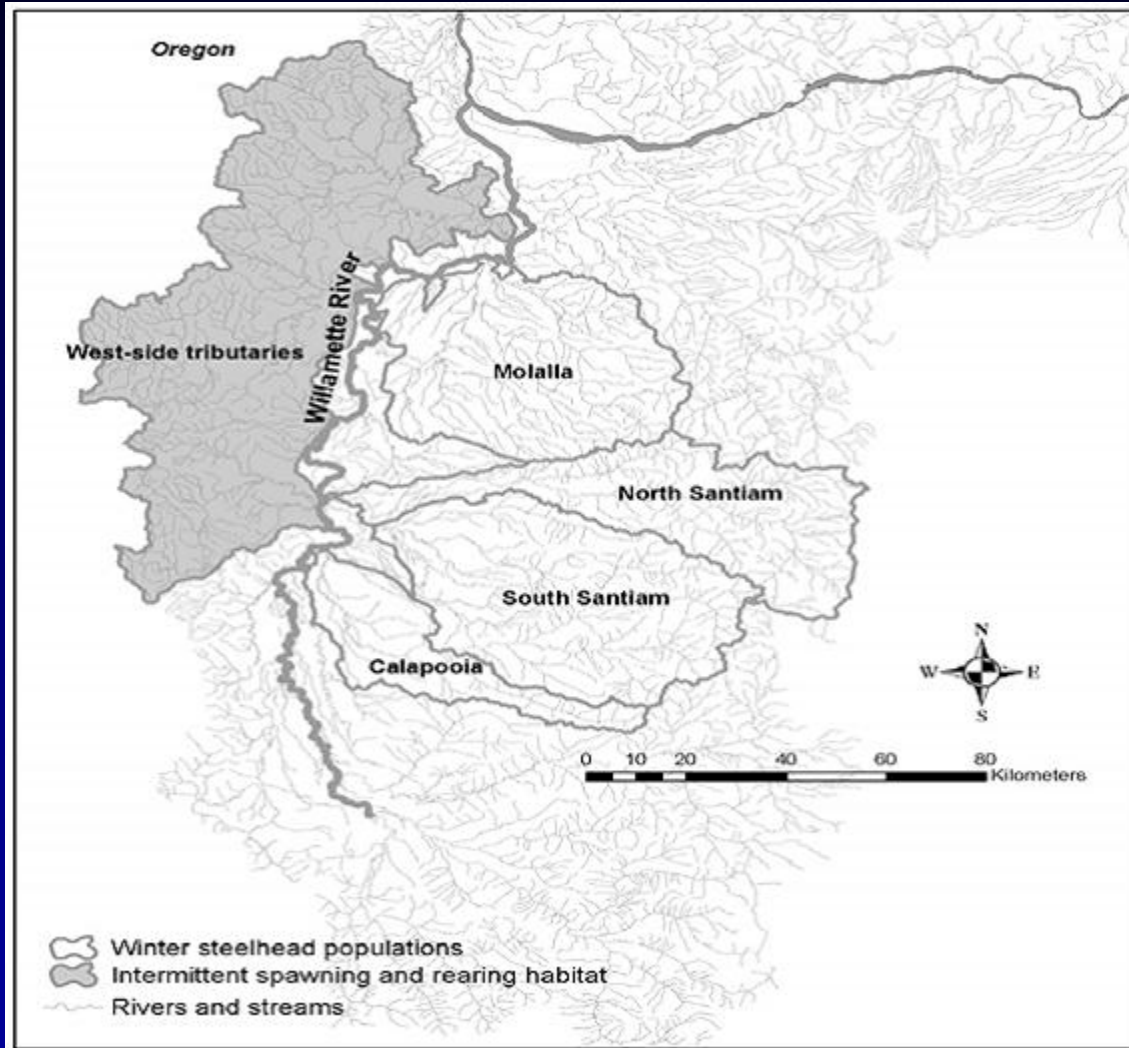
At North Fork Dam



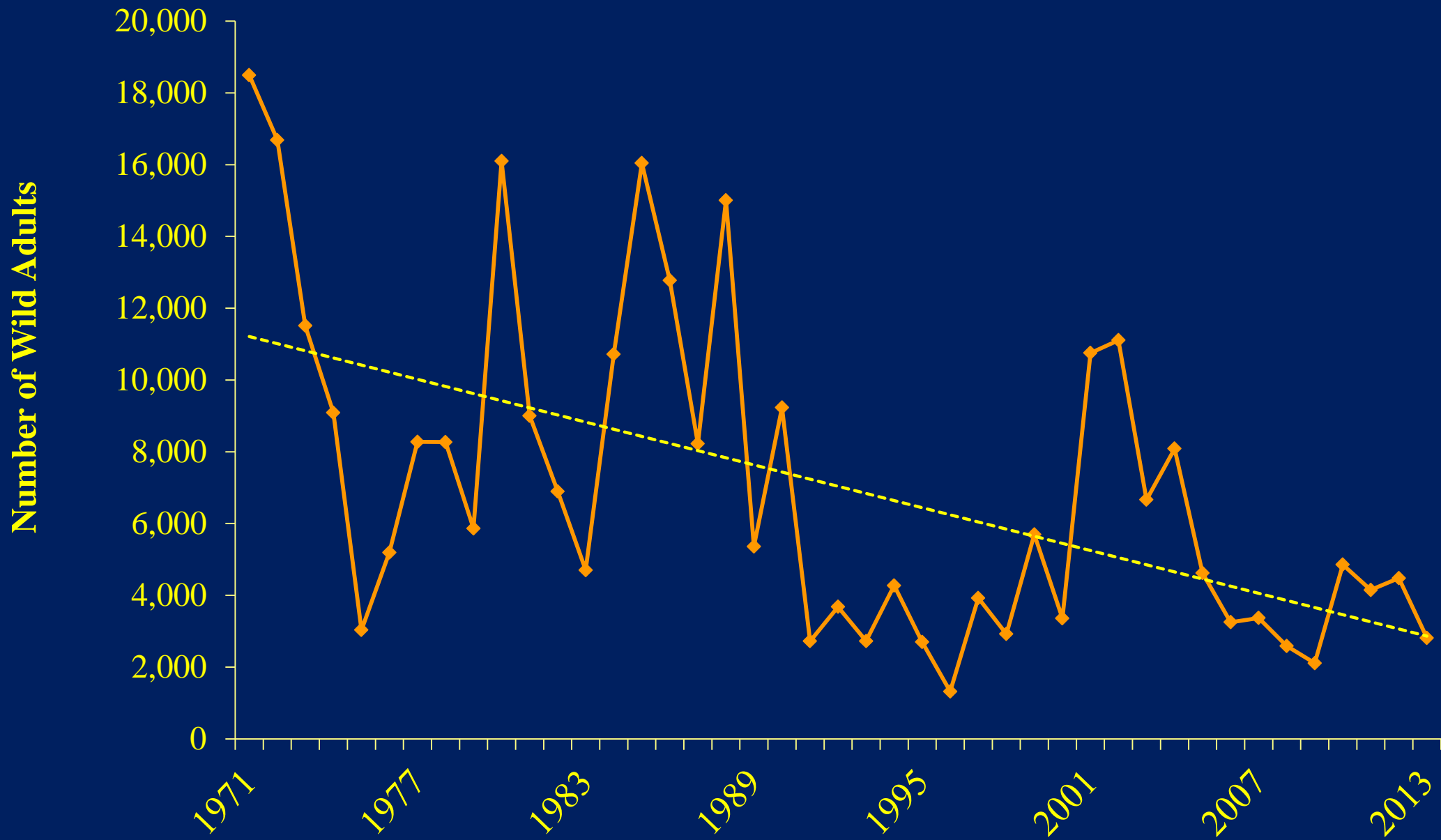
Southwest Washington DPS



Upper Willamette DPS

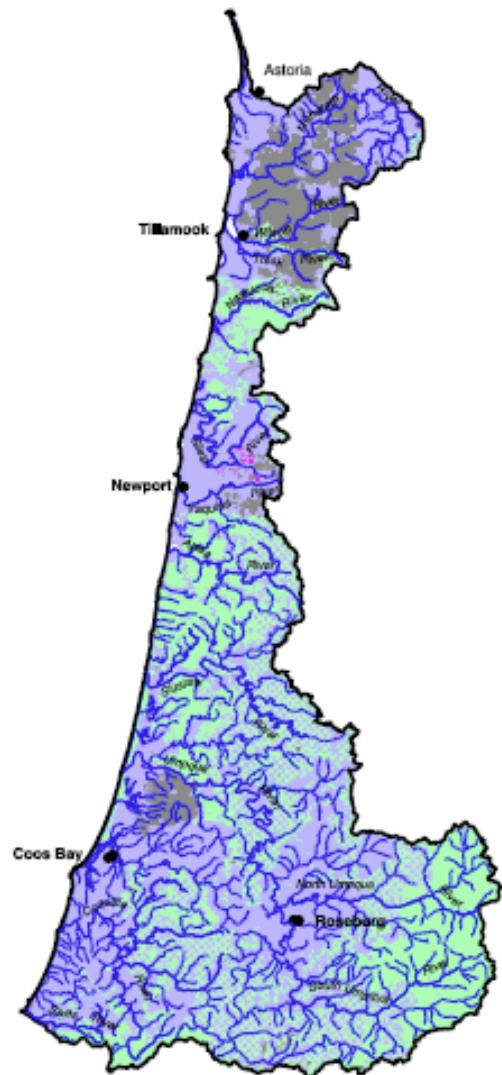
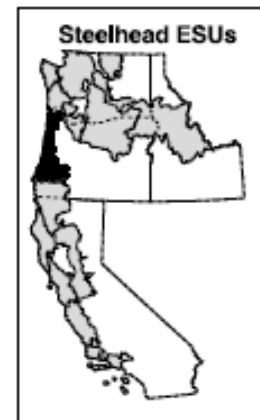


Upper Willamette River Winter Steelhead





OREGON COAST STEELHEAD DPS



Land Ownership

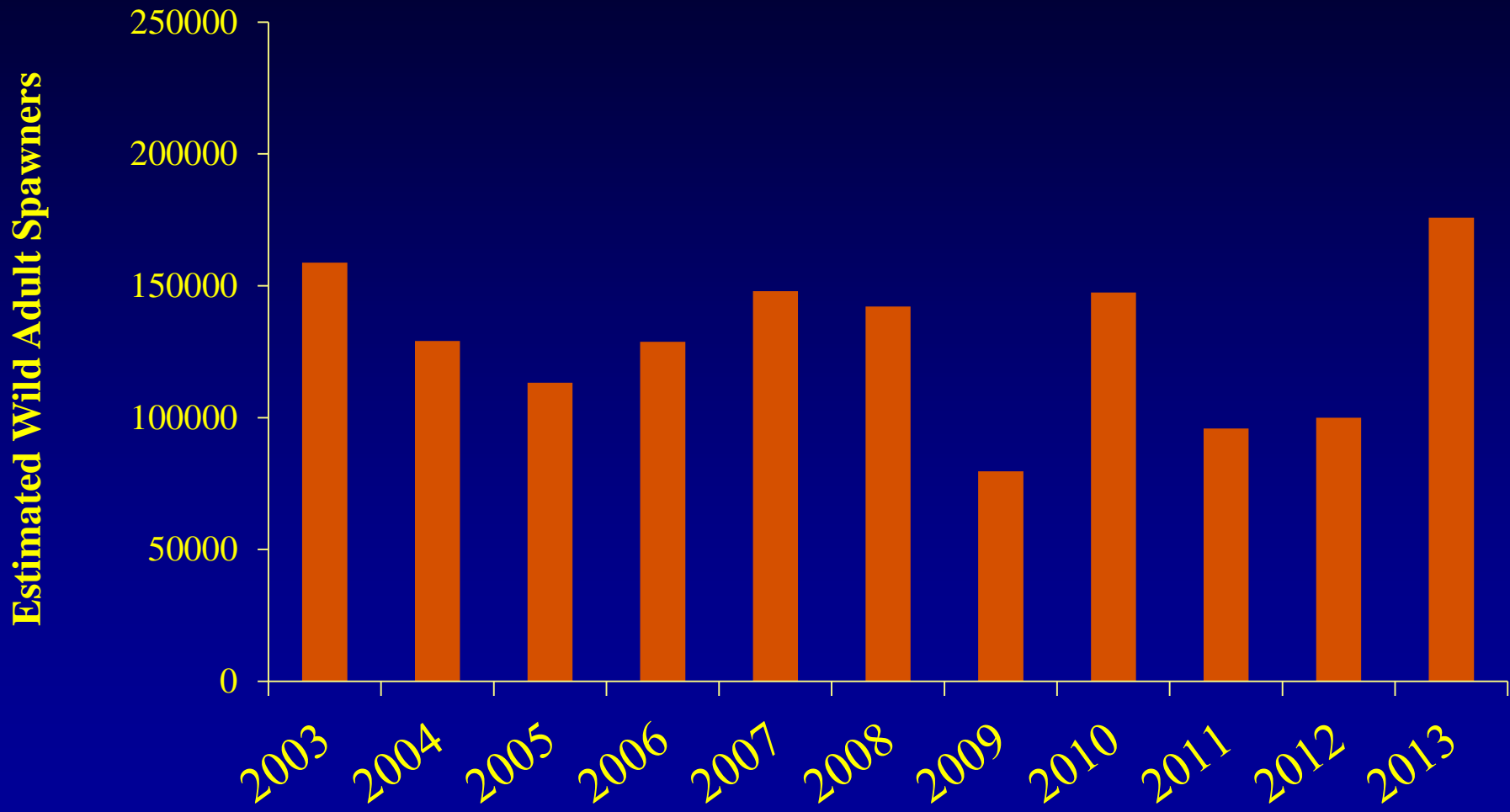
- Federal (35%)
- Private (56%)
- State/Local (8%)
- Tribal (less than 1%)

United States Department of Commerce
National Oceanic & Atmospheric Administration
NATIONAL MARINE FISHERIES SERVICE
HABITAT CONSERVATION DIVISION
525 N.E. Oregon St., Suite 410
Portland, OR 97232
Tel: (503) 231-4223

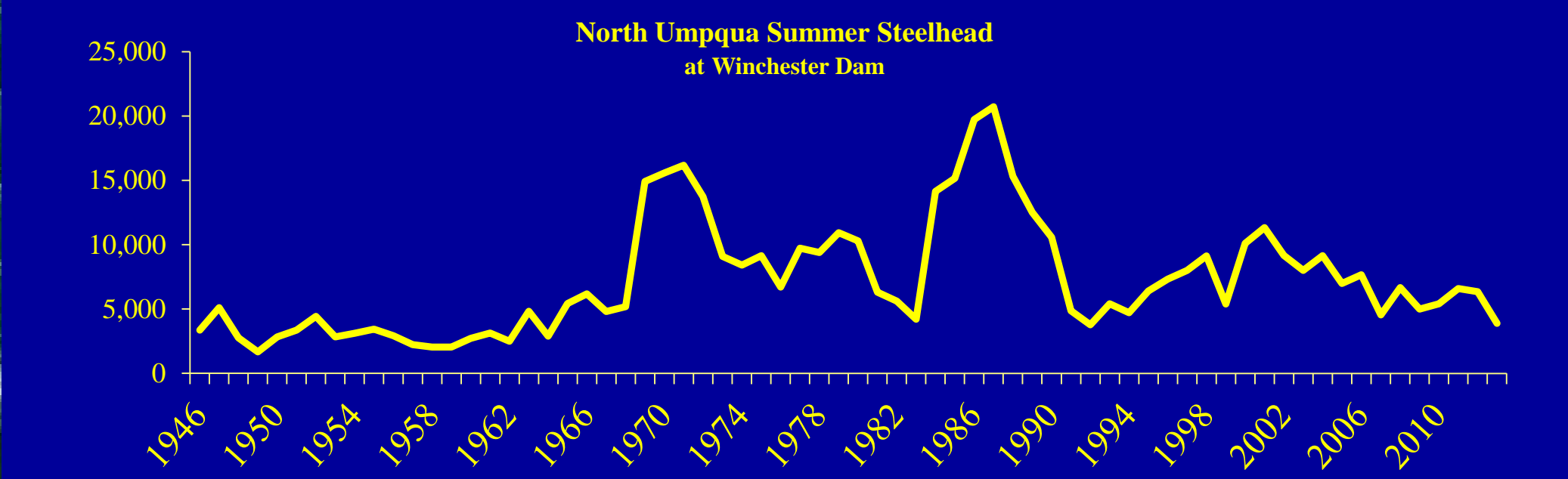
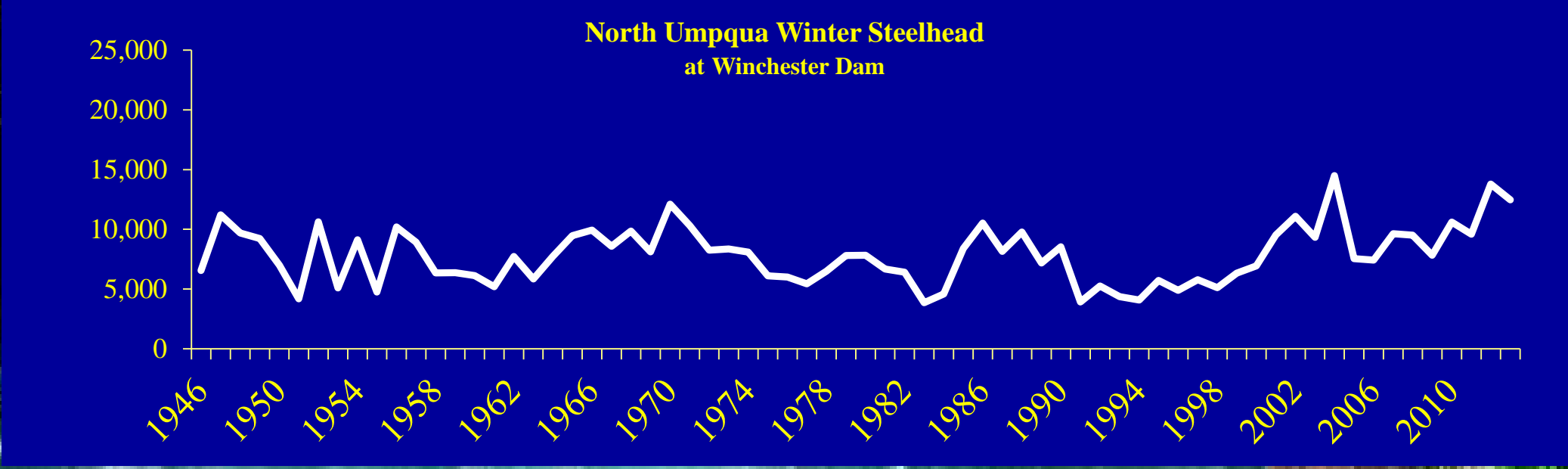


Note: Map is for general reference only.

Oregon Coast DPS-Wide Spawner Estimates

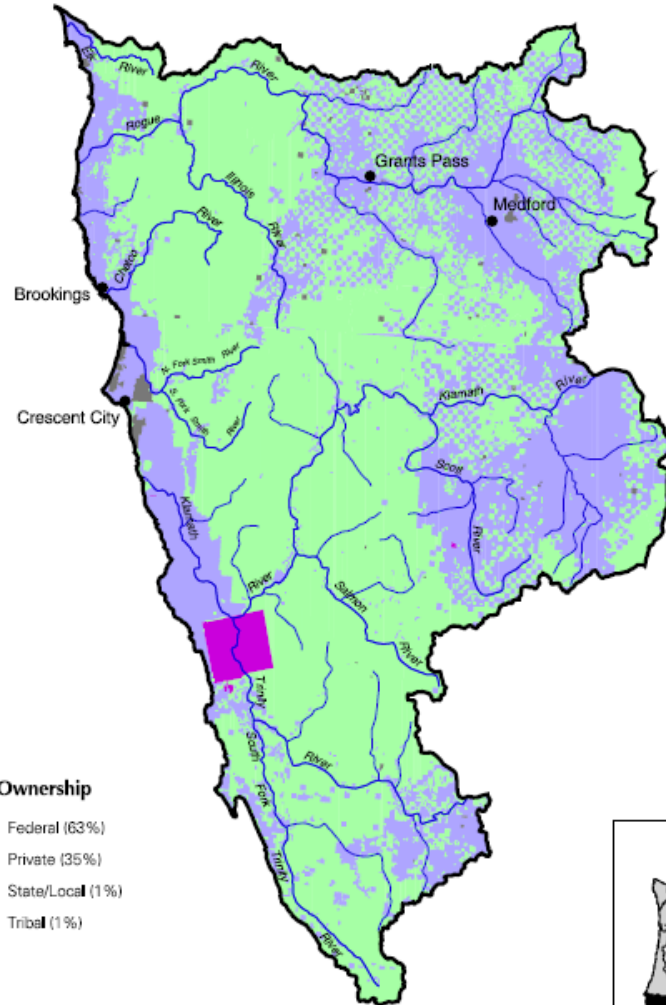


North Umpqua Winter and Summer Steelhead





KLAMATH MOUNTAINS PROVINCE STEELHEAD DPS

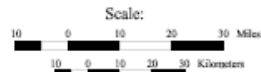


Land Ownership

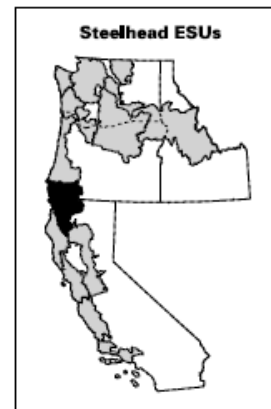
- Federal (63%)
- Private (35%)
- State/Local (1%)
- Tribal (1%)

Note: Map is for general reference only.

United States Department of Commerce
National Oceanic & Atmospheric Administration
NATIONAL MARINE FISHERIES SERVICE
HABITAT CONSERVATION DIVISION
525 N.E. Oregon St., Suite 410
Portland, OR 97232
Tel (503) 231-2223

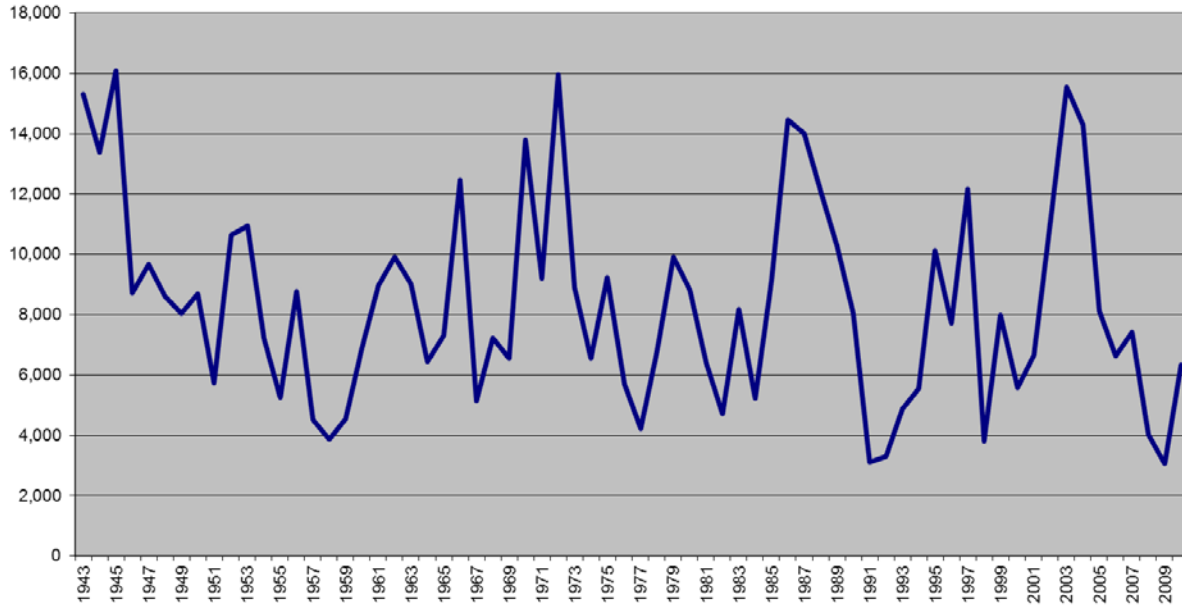


MAP DATE: 2/11/99
CREATED BY: SLK
FILE: BACWVW/CLM012

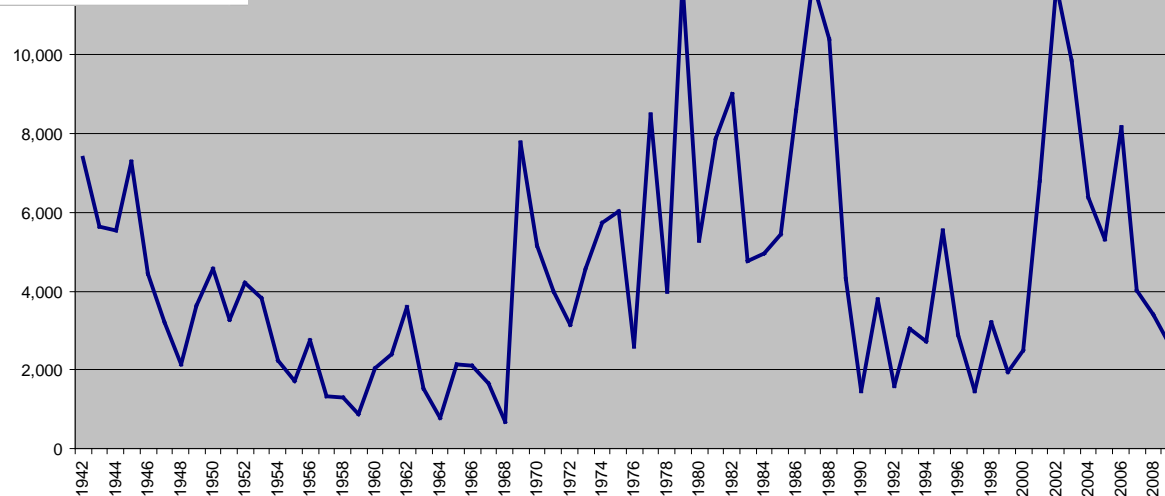


Rogue River Winter and Summer Steelhead

**Rogue River Winter Steelhead
at Gold Ray Dam**



**Rogue River Summer Steelhead
at Gold Ray Dam**



Monitoring Changes

- Improvements to monitoring in the Hood River Basin.
- GRTS based monitoring has been implemented in the Umatilla, and is expected in some populations of the SWW DPS.
- Monitoring refinement continues across these areas, including the investigation of various biases within our methodologies.

Other Items of Interest

- Coastal Multi-species Plan is being finalized, and will codify steelhead management along the coast
- Recovery plans are either in place or being developed in all of the listed DPS.

Thanks To:

Kasey Bliesner

Ian Tattam

Ted Sedell

Rod French

Laura Jackson

Derek Wilson

Dan VanDyke

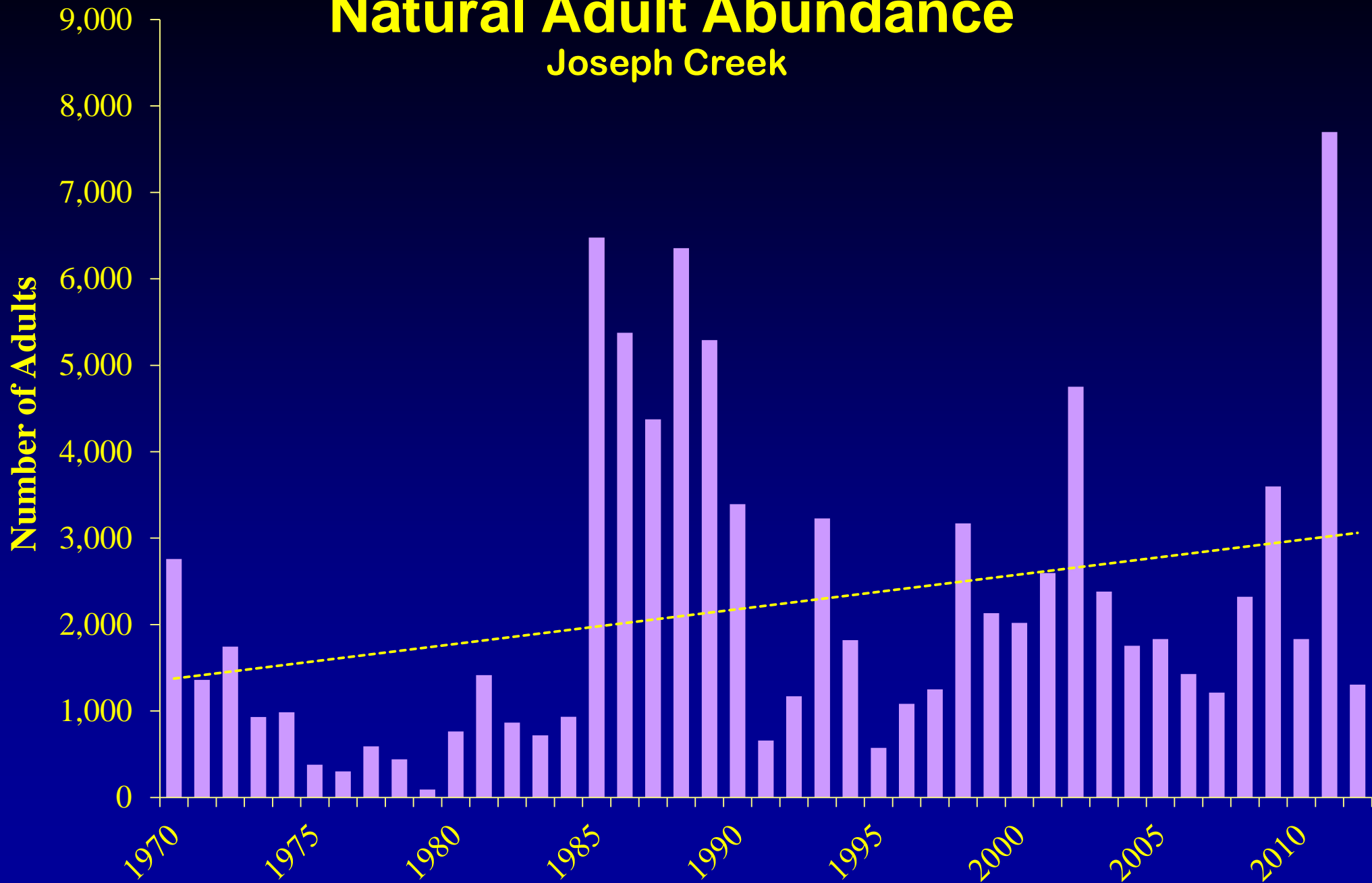
Todd Confer

Ryan Jacobsen

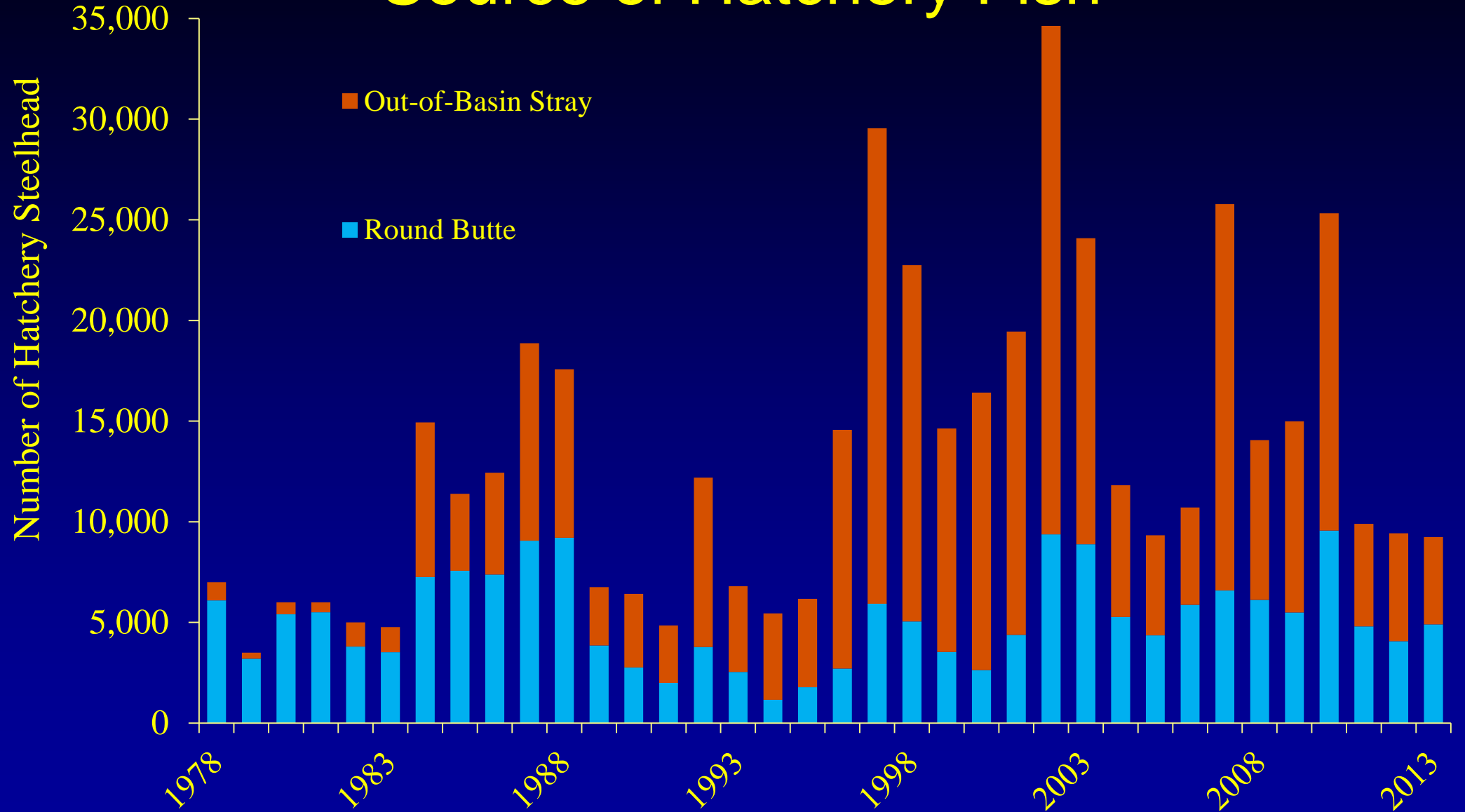
Kevin Goodson

Natural Adult Abundance

Joseph Creek

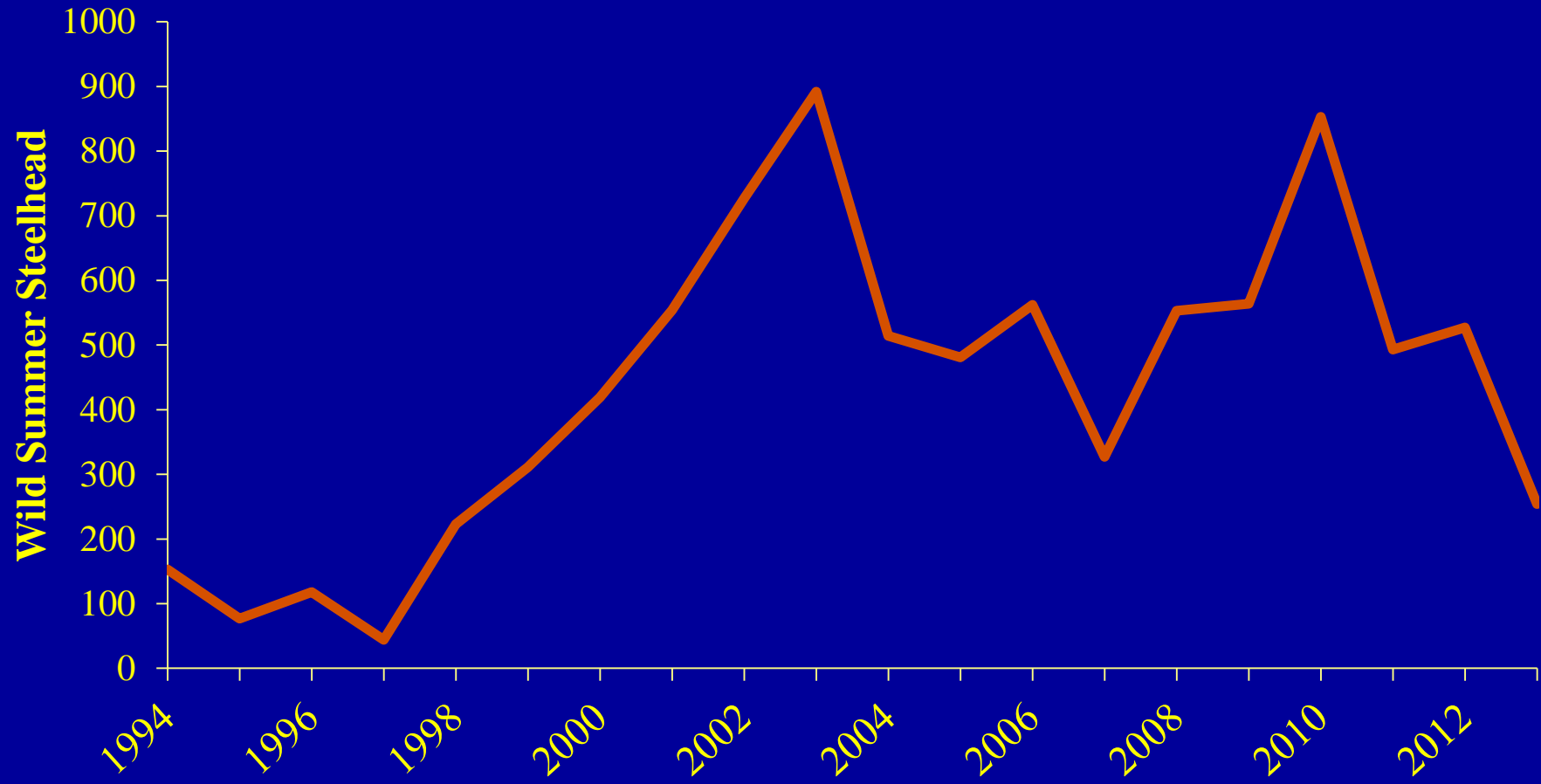


Source of Hatchery Fish



Siletz Summer Steelhead

Siletz Falls Wild Summer Steelhead Counts



Oregon Steelhead

