

# **West Coast and Alaska Marine Fuel Prices 2014 - 2016**

## **Annual Report**



Economic Fisheries Information Network  
Pacific States Marine Fisheries Commission

205 S.E. Spokane Street, Suite 100  
Portland, OR 97202  
efin@psmfc.org \* <http://www.psmfc.org/efin>  
(503) 595-3100 voice \* (503) 595-3232 fax



## Marine Fuel Prices

# Table of Contents

---

*This document was created to assist users of marine fuel price data from the Economic Fisheries Information Network (EFIN) Website. It contains the following information:*

### General Information

- Data Retrieval Location
- Contacts

### Sample

- Port Selection Method
- Selected Ports
- Changes Since Inception
- Fuel Suppliers

### Data Collection

- Date of Collection
- Price Data Collected
- Data Availability
- Variable Formats

### Data Charts for Alaska, Washington, Oregon & California

- 2014-2016 State-Level Summary
  - 2016 State-Level Summary
  - 2015 State-Level Summary
  - 2014 State-Level Summary
- 2014-2016 Regional-Level Summary for Alaska
  - 2016 Regional-Level Summary for Alaska
  - 2016 Southeast Alaska
  - 2016 Rest of Alaska
- 2014-2016 Regional-Level Summary for Washington
  - 2016 Regional-Level Summary for Washington
  - 2016 Northern Washington
  - 2016 Puget Sound
  - 2016 Washington Coast
- 2014-2016 Regional-Level Summary for Oregon
  - 2016 Regional-Level Summary for Oregon
  - 2016 All Oregon
- 2014-2016 Regional-Level Summary for California
  - 2016 Regional-Level Summary for California
  - 2016 All California



# General Information

---

## Data Retrieval Location

This data was retrieved from the Pacific States Marine Fisheries Commission's EFIN Program at <http://www.psmfc.org/efin>.

## Contacts

Please direct any questions, suggestions or other comments to:

(503) 595-3100

Geana Tyler  
Project Manager  
[gtyler@psmfc.org](mailto:gtyler@psmfc.org)

Dave Colpo  
Sr. Program Manager  
[dcolpo@psmfc.org](mailto:dcolpo@psmfc.org)

# Sample

---

## Port Selection Method

### *Alaska*

Originally, ports were selected out of discussions with Alaska Department of Fish and Game (ADF&G) and North Pacific Fishery Management Council (NPFMC) staff. The selected ports were chosen to include ports with significant revenue generation, and were broadly geographically representative of commercial fishing ports in Alaska.

### *California/Oregon/Washington*

Ports in Washington, Oregon and California were selected if:

- The port meets at least one of the following:
  - ◊ was included in the National Marine Fisheries Service (NMFS) Southwest Region's collection of fuel prices, which was suspended in 1994;
  - ◊ or was one of the top 25 revenue generating ports\* on the West Coast in 1997;
  - ◊ or was one of the top 10 revenue generating ports\* in the state in 1997;
- and has a fuel supplier
- and is identified by a single port in the PacFIN port codes (as opposed to a group of ports; e.g., OSF - Other San Francisco Ports)

## Changes since Inception

### Grouping Changes

- Astoria was grouped with N. Oregon 2001
- Bay Area and Southern California were grouped together in 2004
- Southern California was grouped into All California 2011
- S. Oregon group was merged with All Oregon 2012
- Seattle was grouped into Puget Sound 2014

### Fuel Docks Added

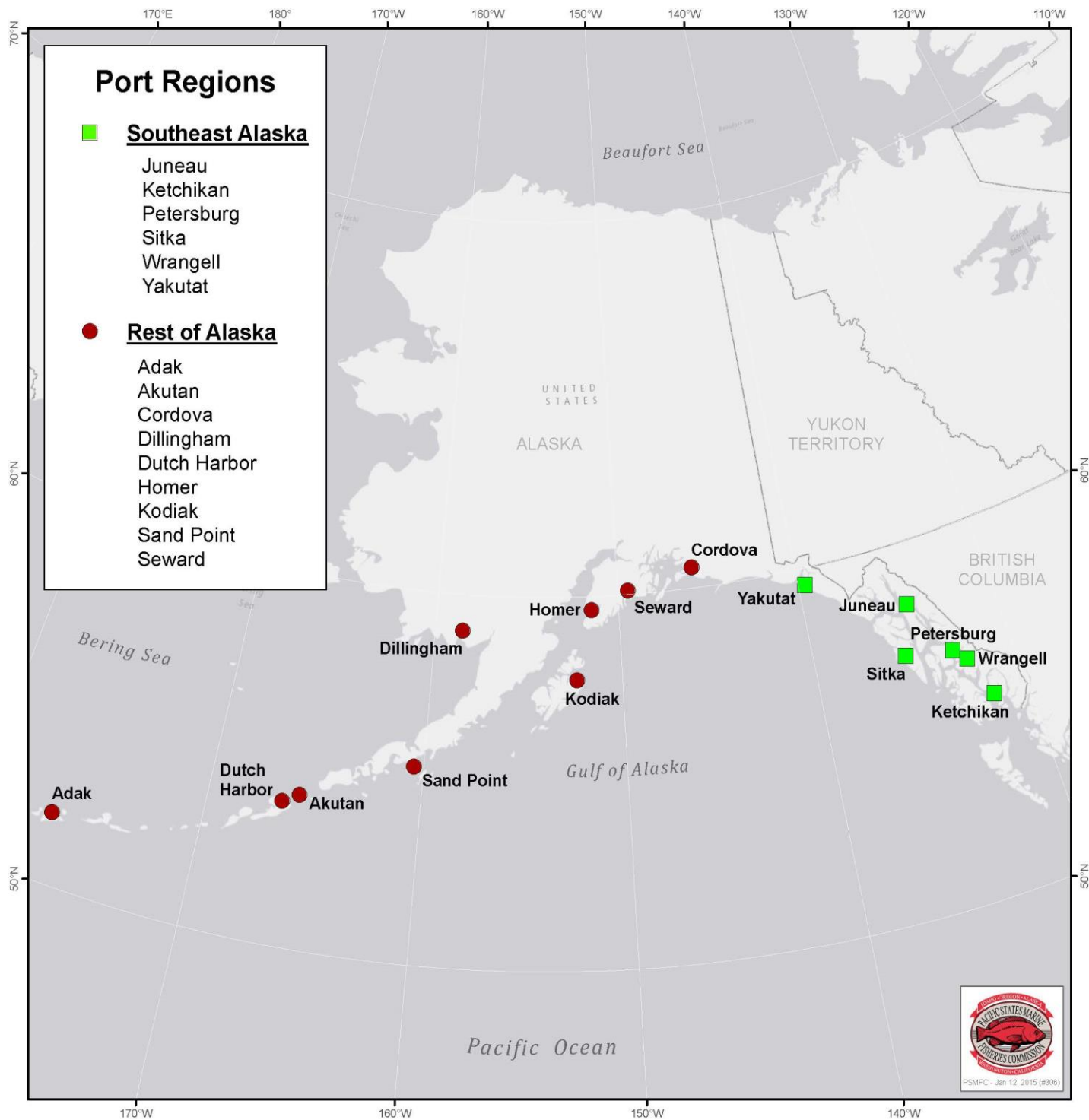
Adak, Dillingham (AK) 2001  
Yakutat, Wrangell (AK) 2001  
Brookings (OR) 2005  
Tacoma, Seattle (WA) Tillamook (OR) 2006  
San Francisco (CA) 2013

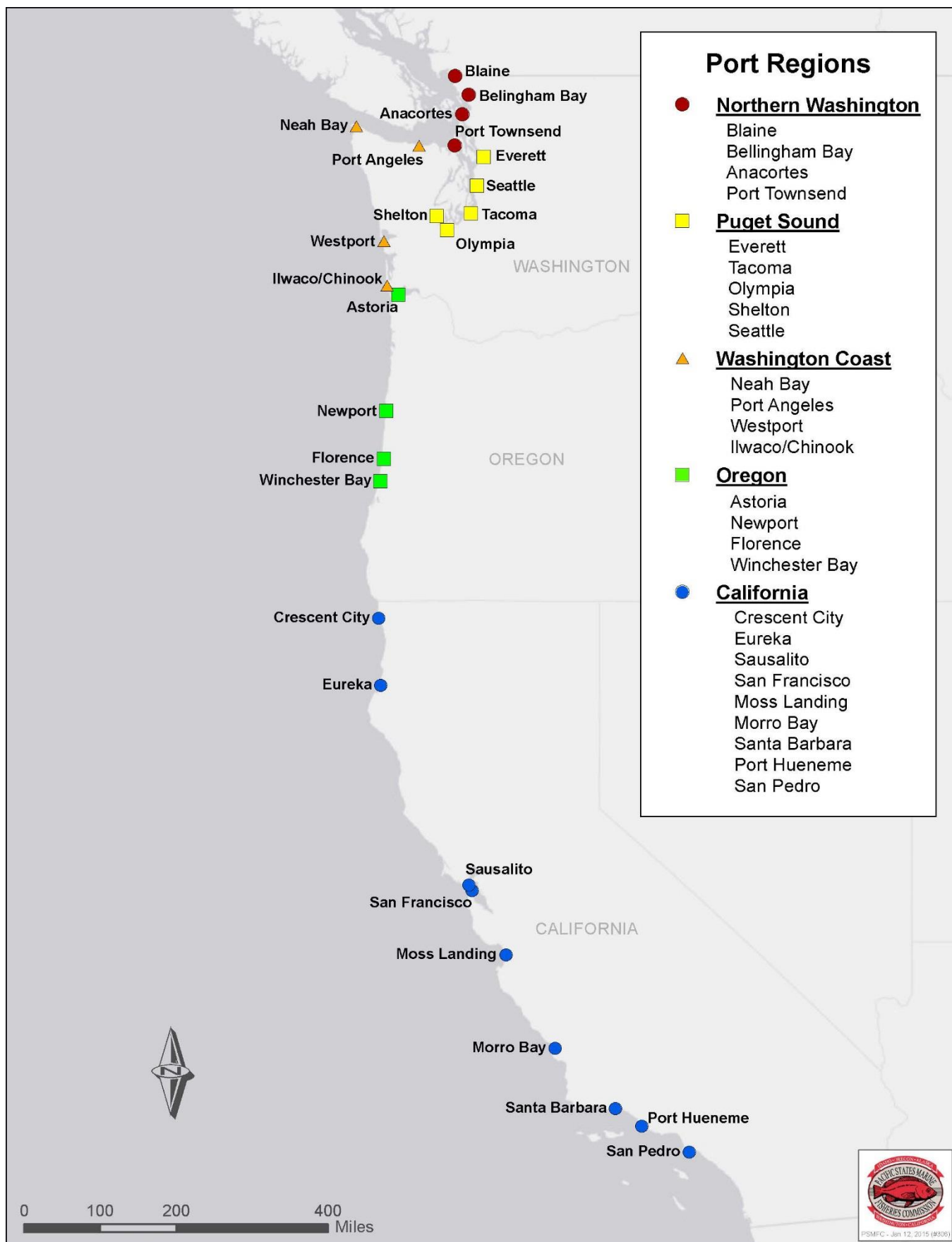
### Fuel Docks Dropped

Terminal Island, Monterey Bay (CA) Willapa Bay (WA) 1999  
Coos Bay (OR) 2000  
Princeton (CA) Port Orford, Brookings (OR) 2001  
St. Paul Island (AK) 2002  
Morro Bay, (CA) Astoria, Depot Bay (OR) 2003  
Bodega Bay (CA) 2008 Brookings (OR) 2009  
Fort Brag (CA) 2011 Gold Beach (OR) 2012  
Tacoma (WA) 2013  
Tillamook/Garibaldi (OR) 2014  
Blaine (WA) & San Pedro (CA) 2015

---

\* Revenue generation figures are based on revenue data associated with all species from PacFIN on 30 Dec 98.  
Pacific States Marine Fisheries Commission Economic Fisheries Information Network  
<http://www.psmfc.org/efin/docs/2016FuelPriceReport.pdf> January 2017





## Fuel Suppliers

At least one fuel supplier in each selected port was surveyed. Its “Fuel Dock Identifier” uniquely identifies each fuel supplier. This identifier was formed by using the three-letter Pacific Fisheries Information Network and Alaska Fisheries Information Network’s (PacFIN/AKFIN) port code for the location of the fuel supplier followed by a sequential number. For example, KTN2 identifies the second fuel supplier surveyed in Ketchikan, AK and SEA4 identifies the fourth fuel supplier surveyed in Seattle, WA. A fuel supplier’s identifier will remain unique to that dock throughout the collection of this data to allow a single dock to be identified over time.

Fuel suppliers were selected on the following basis:

1. If a fuel supplier was included in NMFS SW Region's fuel price collection and the dock's phone number is still operational.
2. If a fuel supplier was listed in the "Port Guide" appearing in the 1998 National Fisherman's Journal Pilothouse Guide and Yellow Pages.
3. If a fuel supplier was not located through the "Port Guide" method for a given port, the US West Dex Internet Yellow Pages and/or the Marine Yellow Pages was used to locate a fuel supplier at that port.
4. In some cases, the Port Office is called in lieu of a fuel supplier. Some suppliers were added to increase coverage in certain areas as their contact information became available.

# Data Collection

---

## Date of Collection

Fuel prices are collected the first Tuesday of each month, given the following contingencies:

- If the first Tuesday of a month is a holiday, prices are collected the following Thursday. For instance, July 4, 2000 was a Tuesday. Price data for July 2000 was collected on Thursday, July 6, 2000. The date the data is collected is stored with the data.
- If the fuel supplier being surveyed does not answer their phone on the first Tuesday of the month, the person surveying the fuel suppliers will try to reach the dock in question one more time during that day and three times on the following Thursday (until the dock is reached). If the dock could not be reached during these attempts, a missing value will appear in the data for that dock.
- If there are other circumstances that prevent the person conducting the survey from being able to do so on the first Tuesday of the month, fuel prices will be collected on the next business day.
- A noted exception happened in 2014 when price collection was performed the second week in September.

## Price Data Collected

The data to be collected are the before tax (where applicable) cash price for 600 gallons of #2 marine diesel for a commercial fishing vessel.

If the before tax price is not available, (i.e., the fuel supplier cannot/will not provide before tax price) the pre-tax price is calculated when possible and a note is made in the "notes" column.

The price collected at 600 gallons, attempts to account for price-breaks that many fuel suppliers have for purchases above 200-500 gallons. We realize that many fishing vessels purchase thousands of gallons at a time and price breaks are offered for larger purchases, however, the largest and most common breaks occur below 600 gallons.

## Data Availability

Fuel price data is available by state and in a combined West Coast/Alaska file. These data are entered and made available on the Economic Fisheries Information Network (EFIN) website in EXCEL and ASCII formats by the second Tuesday of each month.

The link to this data is: <http://www.psmfc.org/efin/data/fuel.html>

## Variable Formats

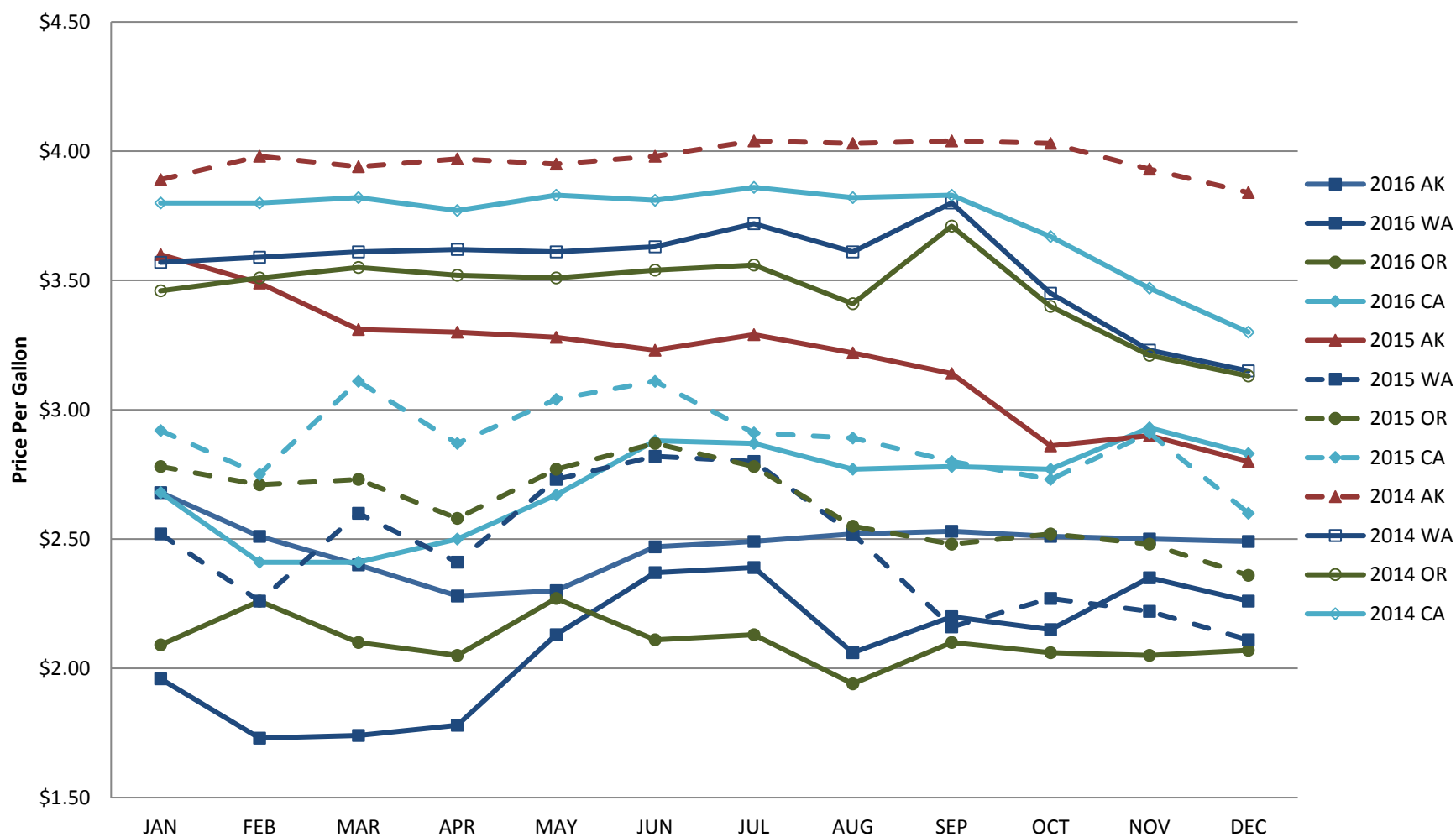
Marine fuel price data are available in two formats: as an EXCEL file and as an ASCII fixed width file. Each file contains the following variables:

Variable	Type	Width	Variable Title	Data Values/Notes
Year	Numeric	4.0	Year of fuel price collection	
Month	Numeric	2.0	Month of fuel price collection	1=January, 2=February, etc.
Day	Numeric	2.0	Date of fuel price collection	
Port	Character	3	PacFIN/AKFIN port code	
PortName	Character	30	Name of port	
State	Character	2	State in which port is located	2-letter US Postal Service official abbreviation
DockCode	Character	4	Fuel dock identifier	
Pricettl	Dollar	10.2	Total cash price before tax of 600 gallons of #2 marine diesel in current US dollars	Pricettl=\$0.00 indicates that a total price was unavailable for this fuel supplier
Pricegal	Dollar	6.6	Cash price per gallon before tax of 600 gallons of #2 marine diesel in current US dollars	Pricegal=\$0.000 indicates that a total price was unavailable for this fuel supplier
PxQuoted	Numeric	1.0	Quoted Price	0 = No Price Quoted - See Notes 1 = Price per Gallon Quoted 2 = Total Price Quoted 3 = Both Prices Quoted
Notes	Character	50	Any notes related to anomalies, exceptions, caveats, etc, associated with the data in the record	



## **2014-2016 Data Charts for Alaska, Washington, Oregon and California**

## 2014-2016 State Average Before-Tax Cash Price Based on the Purchase of 600 Gallons of #2 Marine Diesel

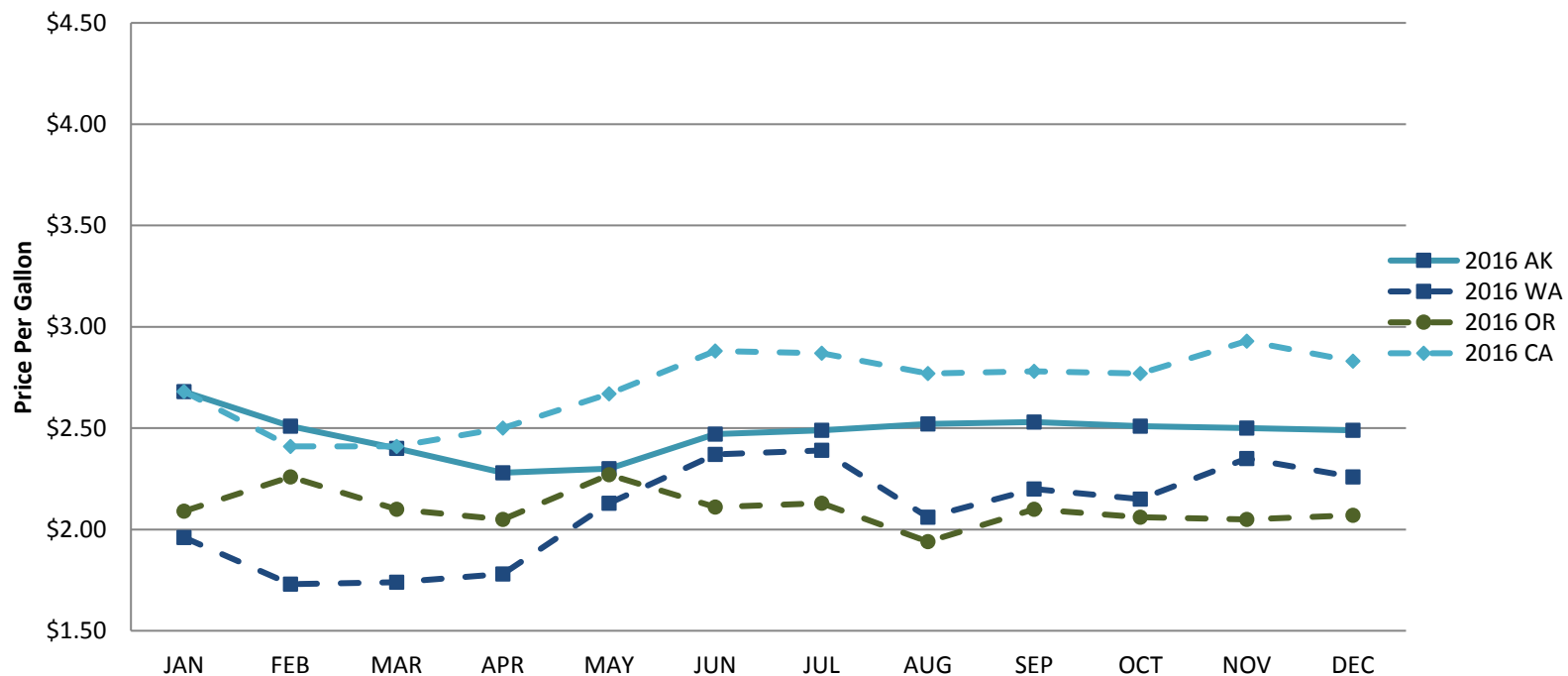


## State Level Summary 2014-2016

<b>2016</b>	<b>JAN</b>	<b>FEB</b>	<b>MAR</b>	<b>APR</b>	<b>MAY</b>	<b>JUN</b>	<b>JUL</b>	<b>AUG</b>	<b>SEP</b>	<b>OCT</b>	<b>NOV</b>	<b>DEC</b>
Alaska	\$2.68	\$2.51	\$2.40	\$2.28	\$2.30	\$2.47	\$2.49	\$2.52	\$2.53	\$2.51	\$2.50	\$2.49
Washington	\$1.96	\$1.73	\$1.74	\$1.78	\$2.13	\$2.37	\$2.39	\$2.06	\$2.20	\$2.15	\$2.35	\$2.26
Oregon	\$2.09	\$2.26	\$2.10	\$2.05	\$2.27	\$2.11	\$2.13	\$1.94	\$2.10	\$2.06	\$2.05	\$2.07
California	\$2.68	\$2.41	\$2.41	\$2.50	\$2.67	\$2.88	\$2.87	\$2.77	\$2.78	\$2.77	\$2.93	\$2.83
<b>2015</b>	<b>JAN</b>	<b>FEB</b>	<b>MAR</b>	<b>APR</b>	<b>MAY</b>	<b>JUN</b>	<b>JUL</b>	<b>AUG</b>	<b>SEP</b>	<b>OCT</b>	<b>NOV</b>	<b>DEC</b>
Alaska	\$3.60	\$3.49	\$3.31	\$3.30	\$3.28	\$3.23	\$3.29	\$3.22	\$3.14	\$2.86	\$2.90	\$2.80
Washington	\$2.52	\$2.26	\$2.60	\$2.41	\$2.73	\$2.82	\$2.80	\$2.52	\$2.16	\$2.27	\$2.22	\$2.11
Oregon	\$2.78	\$2.71	\$2.73	\$2.58	\$2.77	\$2.87	\$2.78	\$2.55	\$2.48	\$2.52	\$2.48	\$2.36
California	\$2.92	\$2.75	\$3.11	\$2.87	\$3.04	\$3.11	\$2.91	\$2.89	\$2.80	\$2.73	\$2.91	\$2.60
<b>2014</b>	<b>JAN</b>	<b>FEB</b>	<b>MAR</b>	<b>APR</b>	<b>MAY</b>	<b>JUN</b>	<b>JUL</b>	<b>AUG</b>	<b>SEP</b>	<b>OCT</b>	<b>NOV</b>	<b>DEC</b>
Alaska	\$3.89	\$3.98	\$3.94	\$3.97	\$3.95	\$3.98	\$4.04	\$4.03	\$4.04	\$4.03	\$3.93	\$3.84
Washington	\$3.57	\$3.59	\$3.61	\$3.62	\$3.61	\$3.63	\$3.72	\$3.61	\$3.80	\$3.45	\$3.23	\$3.15
Oregon	\$3.46	\$3.51	\$3.55	\$3.52	\$3.51	\$3.54	\$3.56	\$3.41	\$3.71	\$3.40	\$3.21	\$3.13
California	\$3.80	\$3.80	\$3.82	\$3.77	\$3.83	\$3.81	\$3.86	\$3.82	\$3.83	\$3.67	\$3.47	\$3.30

## 2016 West Coast Fuel Prices State-Level Summaries

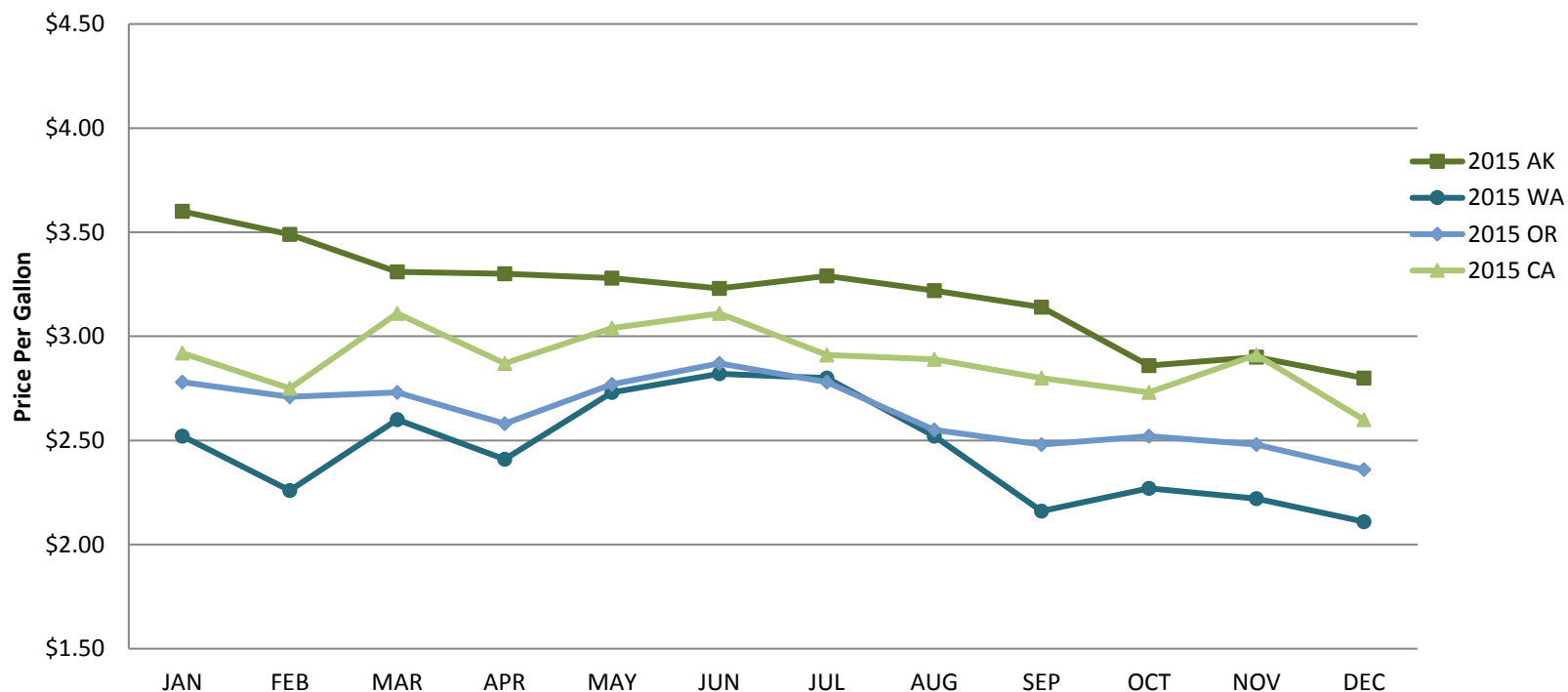
### 2016 State Average Before-Tax Cash Price Based on the Purchase of 600 Gallons of #2 Marine Diesel



2016	JAN	FEB	MAR	APR	MAY	JUN	JUL	AUG	SEP	OCT	NOV	DEC
Alaska	\$2.68	\$2.51	\$2.40	\$2.28	\$2.30	\$2.47	\$2.49	\$2.52	\$2.53	\$2.51	\$2.50	\$2.49
Washington	\$1.96	\$1.73	\$1.74	\$1.78	\$2.13	\$2.37	\$2.39	\$2.06	\$2.20	\$2.15	\$2.35	\$2.26
Oregon	\$2.09	\$2.26	\$2.10	\$2.05	\$2.27	\$2.11	\$2.13	\$1.94	\$2.10	\$2.06	\$2.05	\$2.07
California	\$2.68	\$2.41	\$2.41	\$2.50	\$2.67	\$2.88	\$2.87	\$2.77	\$2.78	\$2.77	\$2.93	\$2.83

## 2015 West Coast Fuel Prices State-Level Summaries

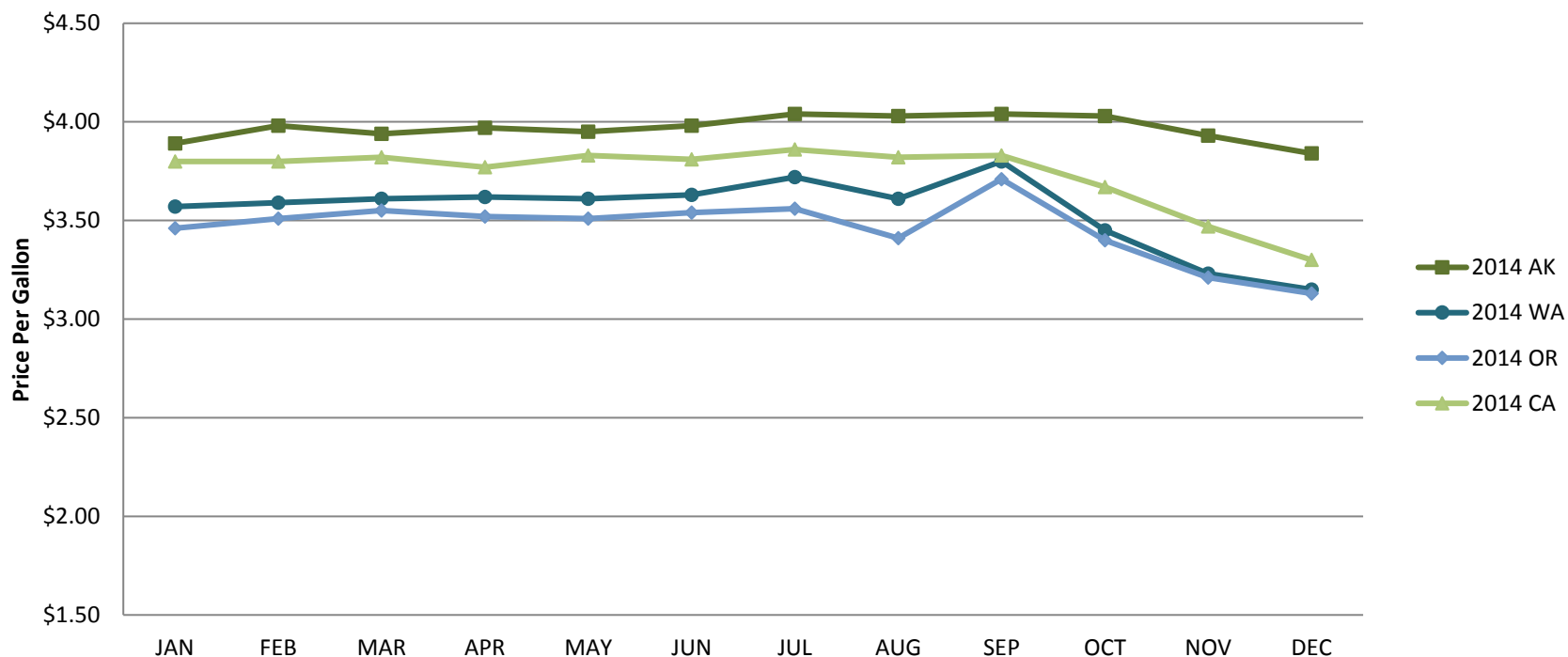
### 2015 State Average Before-Tax Cash Price Based on the Purchase of 600 Gallons of #2 Marine Diesel



2015	JAN	FEB	MAR	APR	MAY	JUN	JUL	AUG	SEP	OCT	NOV	DEC
Alaska	\$3.60	\$3.49	\$3.31	\$3.30	\$3.28	\$3.23	\$3.29	\$3.22	\$3.14	\$2.86	\$2.90	\$2.80
Washington	\$2.52	\$2.26	\$2.60	\$2.41	\$2.73	\$2.82	\$2.80	\$2.52	\$2.16	\$2.27	\$2.22	\$2.11
Oregon	\$2.78	\$2.71	\$2.73	\$2.58	\$2.77	\$2.87	\$2.78	\$2.55	\$2.48	\$2.52	\$2.48	\$2.36
California	\$2.92	\$2.75	\$3.11	\$2.87	\$3.04	\$3.11	\$2.91	\$2.89	\$2.80	\$2.73	\$2.91	\$2.60

## 2014 West Coast Fuel Prices State-Level Summaries

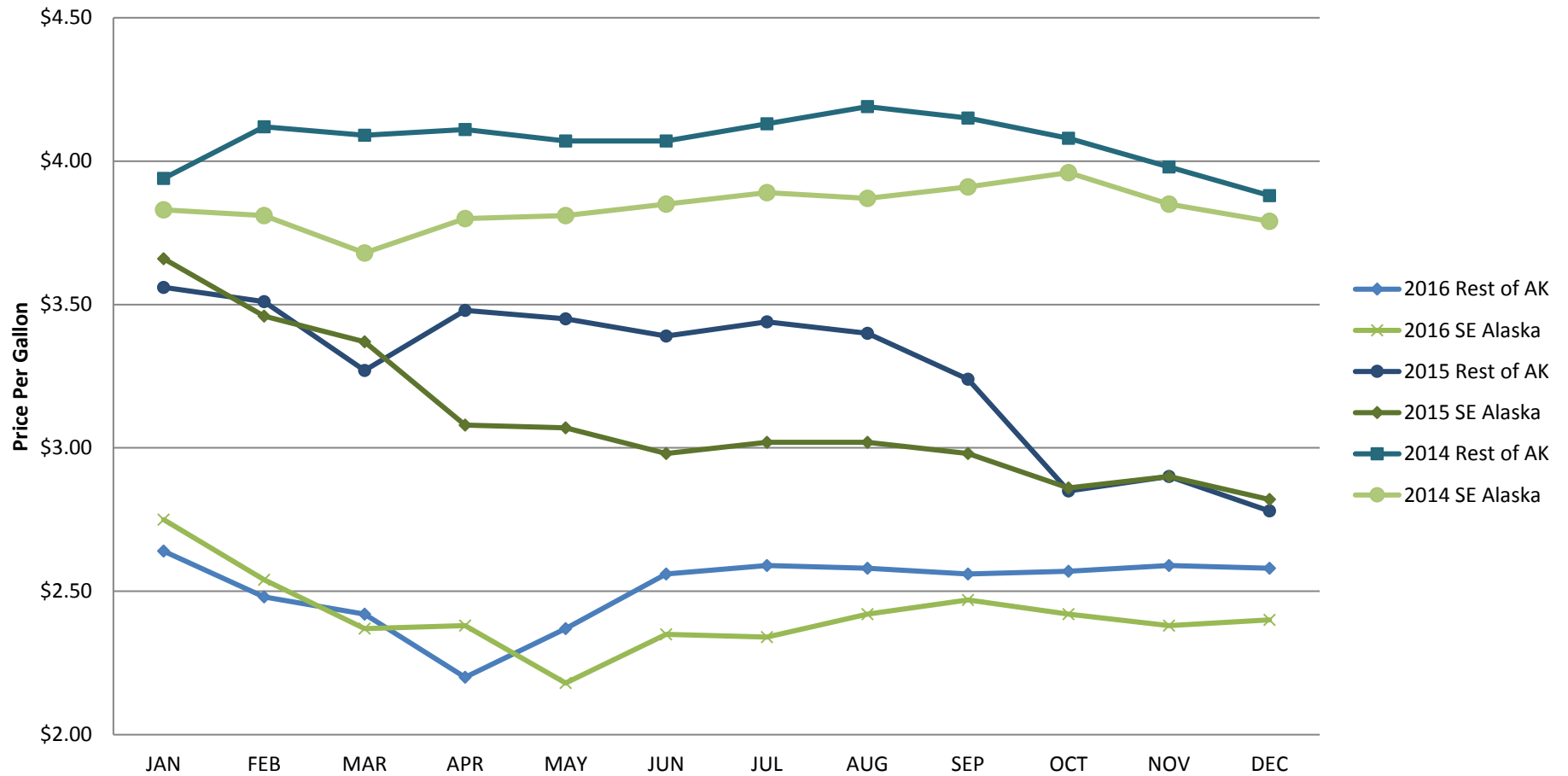
### 2014 State Average Before-Tax Cash Price Based on the Purchase of 600 Gallons of #2 Marine Diesel



2014	JAN	FEB	MAR	APR	MAY	JUN	JUL	AUG	SEP	OCT	NOV	DEC
Alaska	\$3.89	\$3.98	\$3.94	\$3.97	\$3.95	\$3.98	\$4.04	\$4.03	\$4.04	\$4.03	\$3.93	\$3.84
Washington	\$3.57	\$3.59	\$3.61	\$3.62	\$3.61	\$3.63	\$3.72	\$3.61	\$3.61	\$3.80	\$3.45	\$3.15
Oregon	\$3.46	\$3.51	\$3.55	\$3.52	\$3.51	\$3.54	\$3.56	\$3.56	\$3.41	\$3.71	\$3.40	\$3.13
California	\$3.80	\$3.80	\$3.82	\$3.77	\$3.83	\$3.81	\$3.86	\$3.86	\$3.82	\$3.83	\$3.67	\$3.30

## **2014-2016 Regional-Level Summary for Alaska**

# **2014 - 2016 Alaska Fuel Prices State-Level Summaries** **Average Before-Tax Cash Price Based on the Purchase of 600 Gallons of #2** **Marine Diesel**



## Regional-Level Summary for Alaska

---

The ports in Alaska are grouped into two regions:

### The Rest of Alaska

Adak  
Akutan  
Cordova  
Dillingham  
Dutch Harbor  
Homer  
Kodiak  
Sand Point  
Seward

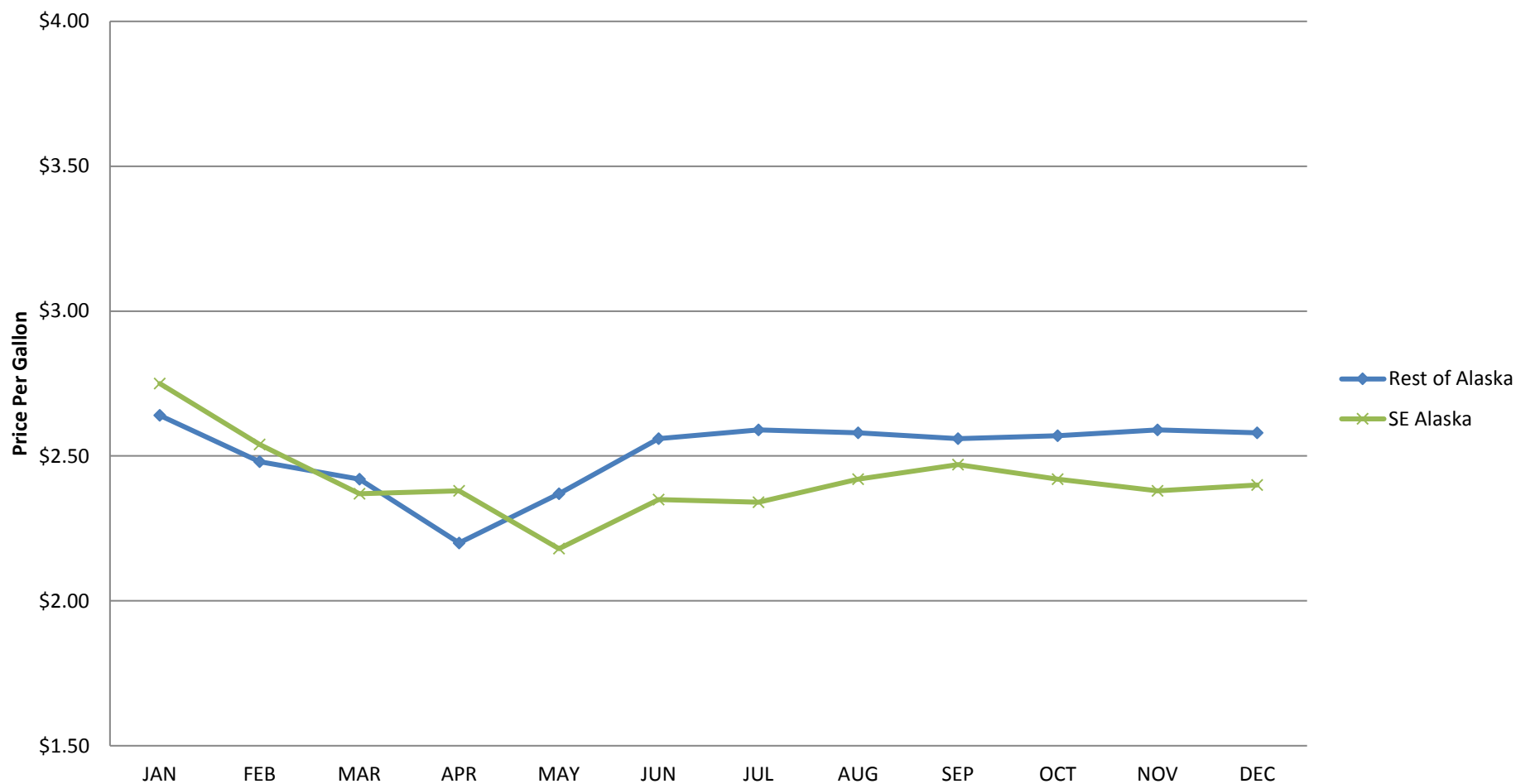
### Southeast Alaska

Juneau  
Ketchikan  
Petersburg  
Sitka  
Wrangell  
Yakutat

<b>2016</b>	<b>JAN</b>	<b>FEB</b>	<b>MAR</b>	<b>APR</b>	<b>MAY</b>	<b>JUN</b>	<b>JUL</b>	<b>AUG</b>	<b>SEP</b>	<b>OCT</b>	<b>NOV</b>	<b>DEC</b>
<b>Rest of Alaska</b>	\$2.64	\$2.48	\$2.42	\$2.20	\$2.37	\$2.56	\$2.59	\$2.58	\$2.56	\$2.57	\$2.59	\$2.58
<b>SE Alaska</b>	\$2.75	\$2.54	\$2.37	\$2.38	\$2.18	\$2.35	\$2.34	\$2.42	\$2.47	\$2.42	\$2.38	\$2.40
<b>2015</b>	<b>JAN</b>	<b>FEB</b>	<b>MAR</b>	<b>APR</b>	<b>MAY</b>	<b>JUN</b>	<b>JUL</b>	<b>AUG</b>	<b>SEP</b>	<b>OCT</b>	<b>NOV</b>	<b>DEC</b>
<b>Rest of Alaska</b>	\$3.56	\$3.51	\$3.27	\$3.48	\$3.45	\$3.39	\$3.44	\$3.40	\$3.24	\$2.85	\$2.90	\$2.78
<b>SE Alaska</b>	\$3.66	\$3.46	\$3.37	\$3.08	\$3.07	\$2.98	\$3.02	\$3.02	\$2.98	\$2.86	\$2.90	\$2.82
<b>2014</b>	<b>JAN</b>	<b>FEB</b>	<b>MAR</b>	<b>APR</b>	<b>MAY</b>	<b>JUN</b>	<b>JUL</b>	<b>AUG</b>	<b>SEP</b>	<b>OCT</b>	<b>NOV</b>	<b>DEC</b>
<b>Rest of Alaska</b>	\$3.94	\$4.12	\$4.09	\$4.11	\$4.07	\$4.07	\$4.13	\$4.19	\$4.15	\$4.08	\$3.98	\$3.88
<b>Southeast Alaska</b>	\$3.83	\$3.81	\$3.68	\$3.80	\$3.81	\$3.85	\$3.89	\$3.87	\$3.91	\$3.96	\$3.85	\$3.79

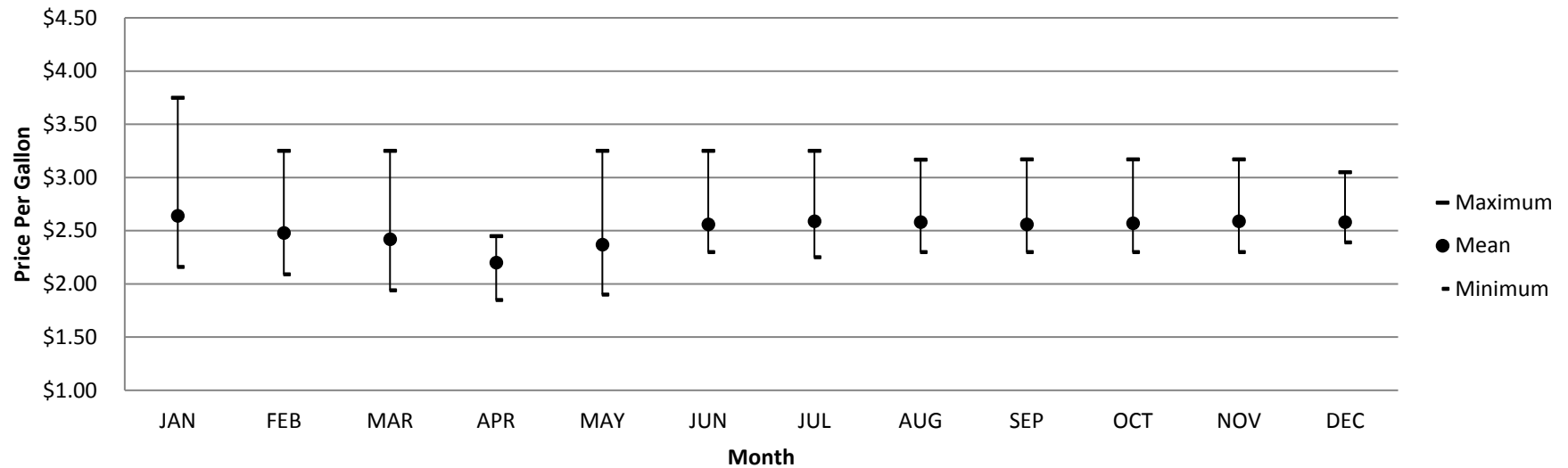
# 2016 Alaska Fuel Prices State-Level Summaries

## Average Before-Tax Cash Price Based on the Purchase of 600 Gallons of #2 Marine Diesel



## 2016 Rest of Alaska

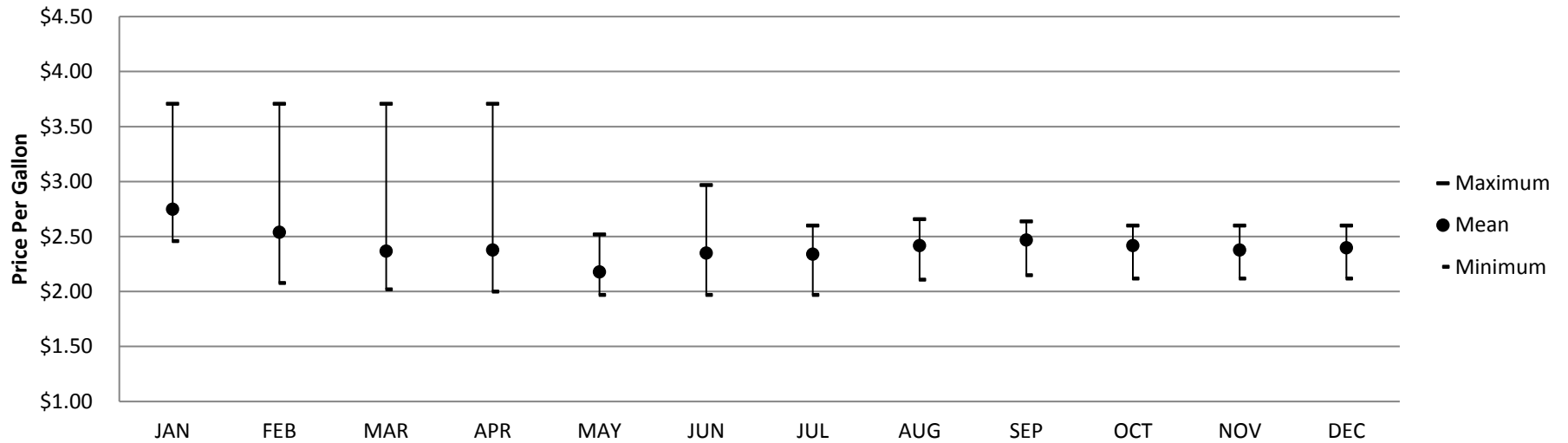
### 2016 Rest of Alaska Monthly Maximum, Mean, Minimum Before-Tax Cash Price Based on the Purchase of 600 Gallons of #2 Marine Diesel



Month	Maximum	Mean	Minimum	Standard Deviation	Number of Fuel Suppliers Responding
JAN	\$3.75	\$2.64	\$2.16	\$0.44	9
FEB	\$3.25	\$2.48	\$2.09	\$0.28	11
MAR	\$3.25	\$2.42	\$1.94	\$0.37	9
APR	\$2.45	\$2.20	\$1.85	\$0.22	10
MAY	\$3.25	\$2.37	\$1.90	\$0.42	12
JUN	\$3.25	\$2.56	\$2.30	\$0.36	10
JUL	\$3.25	\$2.59	\$2.25	\$0.32	11
AUG	\$3.17	\$2.58	\$2.30	\$0.26	12
SEP	\$3.17	\$2.56	\$2.30	\$0.27	12
OCT	\$3.17	\$2.57	\$2.30	\$0.27	12
NOV	\$3.17	\$2.59	\$2.30	\$0.26	12
DEC	\$3.05	\$2.58	\$2.39	\$0.20	8

## 2016 Southeast Alaska

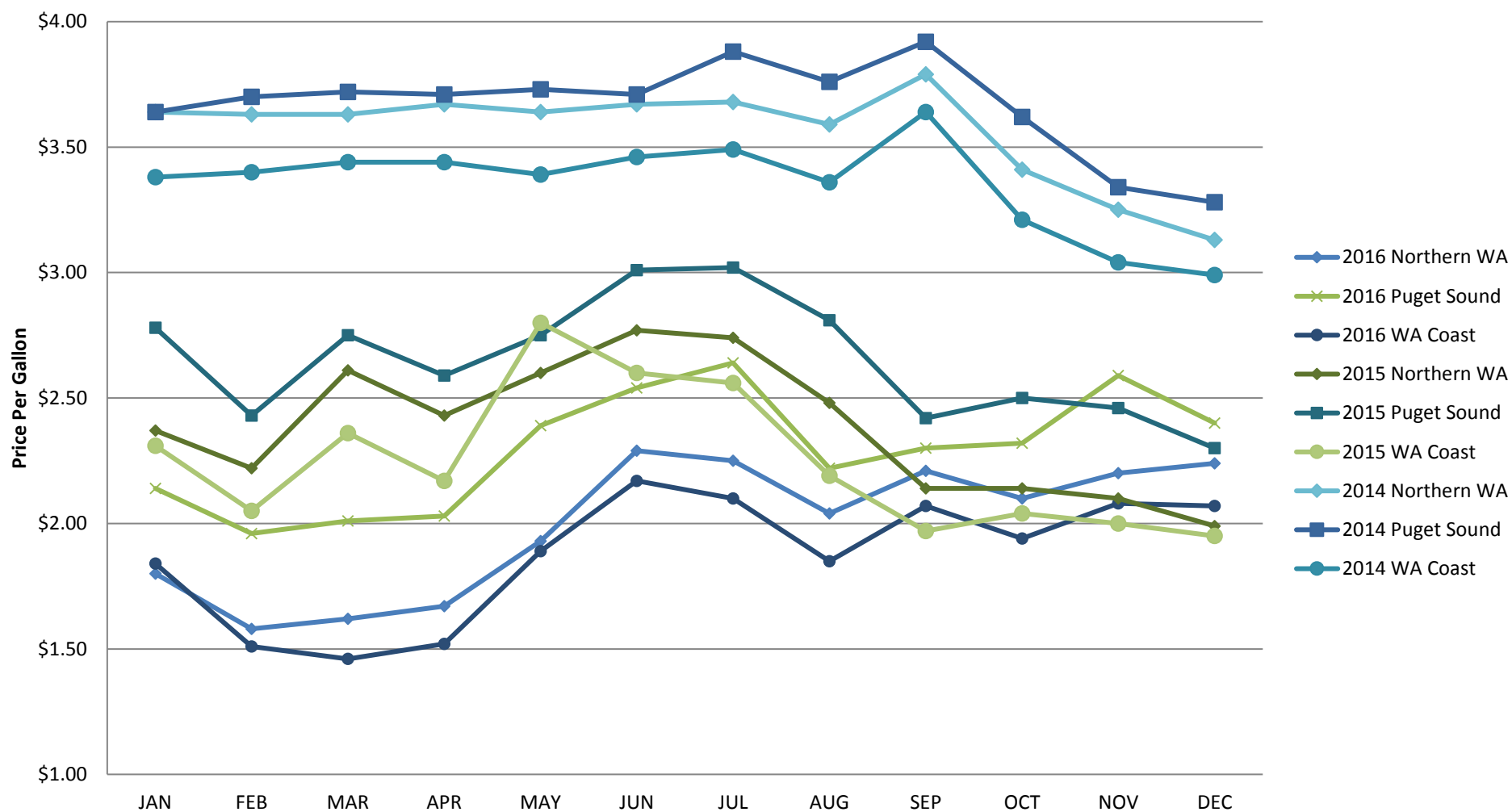
### 2016 Southeast Alaska Monthly Maximum, Mean, Minimum Before-Tax Cash Price Based on the Purchase of 600 Gallons of #2 Marine Diesel



Month	Maximum	Mean	Minimum	Standard Deviation	Number of Fuel Suppliers Responding
JAN	\$3.71	\$2.75	\$2.46	\$0.43	7
FEB	\$3.71	\$2.54	\$2.08	\$0.51	8
MAR	\$3.71	\$2.37	\$2.02	\$0.60	7
APR	\$3.71	\$2.38	\$2.00	\$0.55	8
MAY	\$2.52	\$2.18	\$1.97	\$0.17	8
JUN	\$2.97	\$2.35	\$1.97	\$0.28	8
JUL	\$2.60	\$2.34	\$1.97	\$0.19	8
AUG	\$2.66	\$2.42	\$2.11	\$0.19	8
SEP	\$2.64	\$2.47	\$2.15	\$0.18	8
OCT	\$2.60	\$2.42	\$2.12	\$0.16	8
NOV	\$2.60	\$2.38	\$2.12	\$0.15	8
DEC	\$2.60	\$2.40	\$2.12	\$0.15	8

## **2014-2016 Regional-Level Summary for Washington**

# **2014 - 2016 Washington Fuel Prices State-Level Summaries** **Average Before-Tax Cash Price Based on the Purchase of 600 Gallons of #2** **Marine Diesel**



## Regional-Level Summary for Washington

### Northern Washington

Anacortes  
Bellingham Bay  
Port Townsend

### Puget Sound

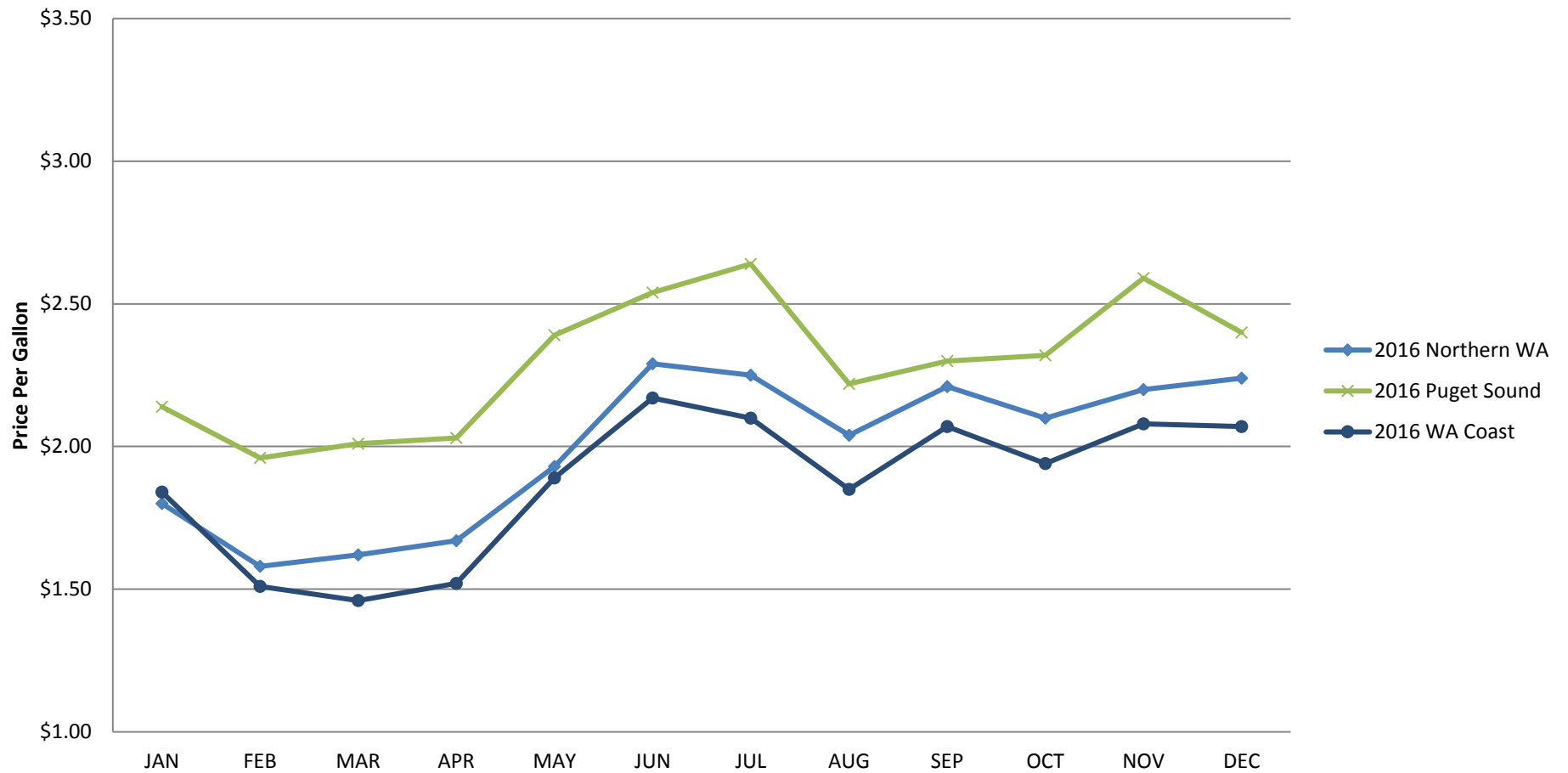
Everett  
Olympia  
Seattle  
Shelton

### Washington Coast

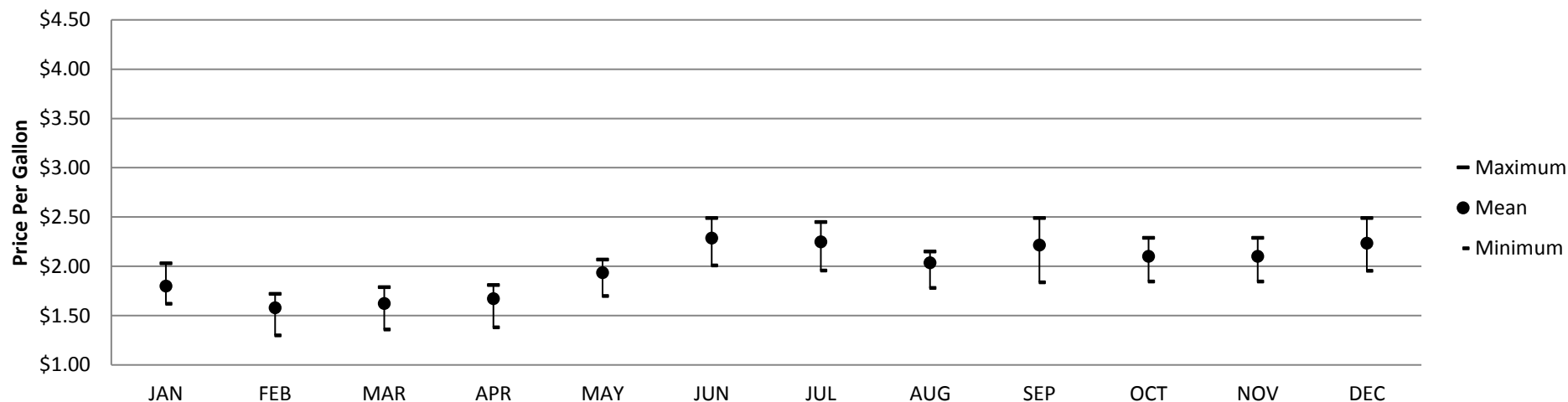
Ilwaco/Chinook  
Neah Bay  
Port Angeles  
Westport

2016	JAN	FEB	MAR	APR	MAY	JUN	JUL	AUG	SEP	OCT	NOV	DEC
Northern Washington	\$1.80	\$1.58	\$1.62	\$1.67	\$1.93	\$2.29	\$2.25	\$2.04	\$2.21	\$2.10	\$2.20	\$2.24
Puget Sound	\$2.14	\$1.96	\$2.01	\$2.03	\$2.39	\$2.54	\$2.64	\$2.22	\$2.30	\$2.32	\$2.59	\$2.40
Washington Coast	\$1.84	\$1.51	\$1.46	\$1.52	\$1.89	\$2.17	\$2.10	\$1.85	\$2.07	\$1.94	\$2.08	\$2.07
2015	JAN	FEB	MAR	APR	MAY	JUN	JUL	AUG	SEP	OCT	NOV	DEC
Northern Washington	\$2.37	\$2.22	\$2.61	\$2.43	\$2.60	\$2.77	\$2.74	\$2.48	\$2.14	\$2.14	\$2.10	\$1.99
Puget Sound	\$2.78	\$2.43	\$2.75	\$2.59	\$2.75	\$3.01	\$3.02	\$2.81	\$2.42	\$2.50	\$2.46	\$2.30
Washington Coast	\$2.31	\$2.05	\$2.36	\$2.17	\$2.80	\$2.60	\$2.56	\$2.19	\$1.97	\$2.04	\$2.00	\$1.95
2014	JAN	FEB	MAR	APR	MAY	JUN	JUL	AUG	SEP	OCT	NOV	DEC
Northern Washington	\$3.64	\$3.63	\$3.63	\$3.67	\$3.64	\$3.67	\$3.68	\$3.59	\$3.79	\$3.41	\$3.25	\$3.13
Puget Sound	\$3.64	\$3.70	\$3.72	\$3.71	\$3.73	\$3.71	\$3.88	\$3.76	\$3.92	\$3.62	\$3.34	\$3.28
Washington Coast	\$3.38	\$3.40	\$3.44	\$3.44	\$3.39	\$3.46	\$3.49	\$3.36	\$3.64	\$3.21	\$3.04	\$2.99

**2016 Washington Fuel Prices State-Level Summaries**  
**Average Before-Tax Cash Price Based on the Purchase of 600 Gallons of #2**  
**Marine Diesel**



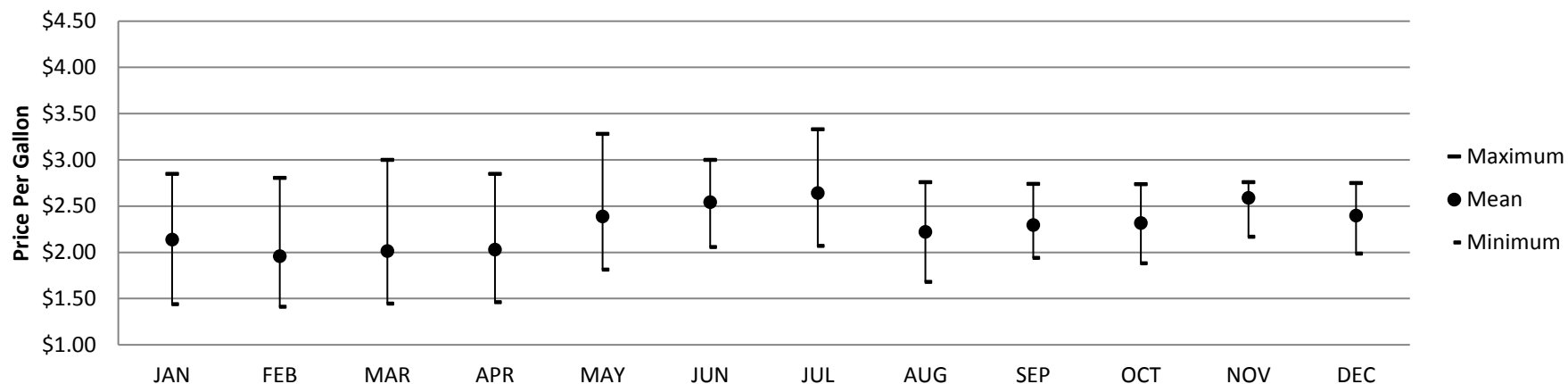
## 2016 Northern Washington Monthly Maximum, Mean, Minimum Before-Tax Cash Price Based on the Purchase of 600 Gallons of #2 Marine Diesel



Month	Maximum	Mean	Minimum	Standard Deviation	Number of Fuel Suppliers Responding
JAN	\$2.03	\$1.80	\$1.62	\$0.20	4
FEB	\$1.72	\$1.58	\$1.30	\$0.24	3
MAR	\$1.79	\$1.62	\$1.36	\$0.19	4
APR	\$1.81	\$1.67	\$1.38	\$0.20	4
MAY	\$2.07	\$1.93	\$1.70	\$0.17	4
JUN	\$2.49	\$2.29	\$2.01	\$0.20	4
JUL	\$2.45	\$2.25	\$1.96	\$0.21	4
AUG	\$2.15	\$2.04	\$1.78	\$0.17	4
SEP	\$2.49	\$2.21	\$1.84	\$0.27	4
OCT	\$2.29	\$2.10	\$1.85	\$0.19	4
NOV	\$2.29	\$2.10	\$1.85	\$0.19	4
DEC	\$2.49	\$2.24	\$1.95	\$0.22	4

## 2016 Puget Sound

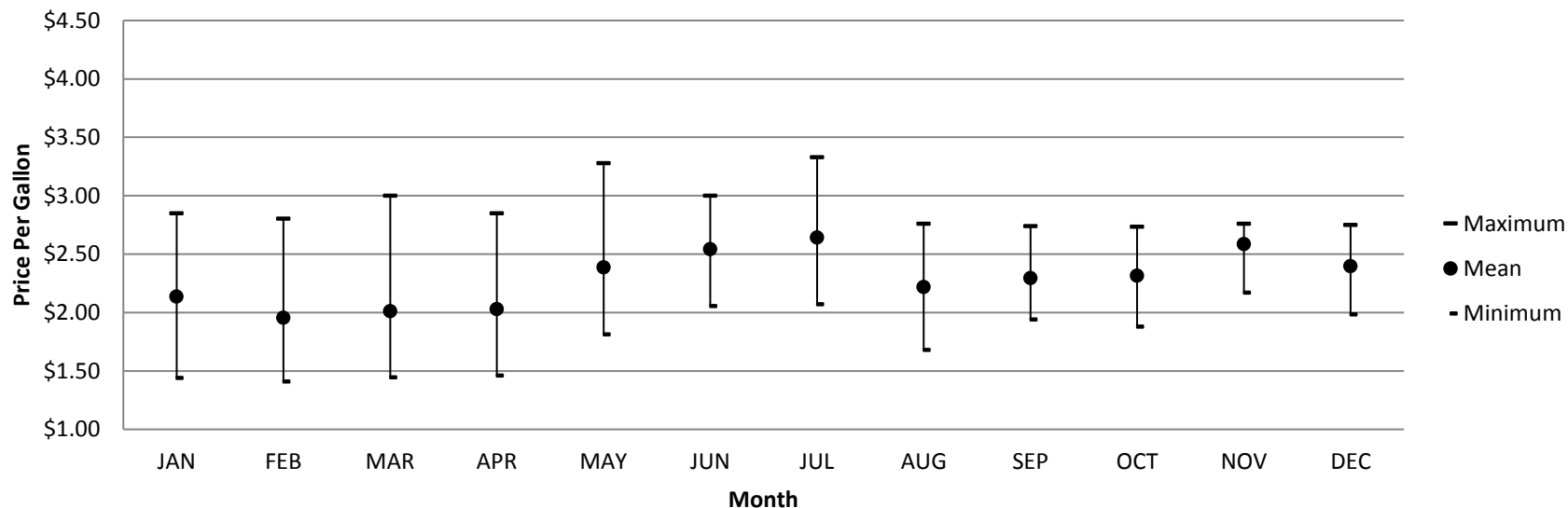
### 2016 Puget Sound Monthly Maximum, Mean, Minimum Before-Tax Cash Price Based on the Purchase of 600 Gallons of #2 Marine Diesel



Month	Maximum	Mean	Minimum	Standard Deviation	Number of Fuel Suppliers Responding
JAN	\$2.85	\$2.14	\$1.44	\$0.57	6
FEB	\$2.81	\$1.96	\$1.41	\$0.54	6
MAR	\$3.00	\$2.01	\$1.45	\$0.61	6
APR	\$2.85	\$2.03	\$1.46	\$0.53	6
MAY	\$3.28	\$2.39	\$1.81	\$0.56	7
JUN	\$3.00	\$2.54	\$2.06	\$0.39	7
JUL	\$3.33	\$2.64	\$2.07	\$0.47	7
AUG	\$2.76	\$2.22	\$1.68	\$0.45	6
SEP	\$2.74	\$2.30	\$1.94	\$0.34	5
OCT	\$2.74	\$2.32	\$1.88	\$0.36	6
NOV	\$2.76	\$2.59	\$2.17	\$0.21	7
DEC	\$2.75	\$2.40	\$1.99	\$0.31	6

## 2016 Washington Coast

### 2016 Puget Sound Monthly Maximum, Mean, Minimum Before-Tax Cash Price Based on the Purchase of 600 Gallons of #2 Marine Diesel

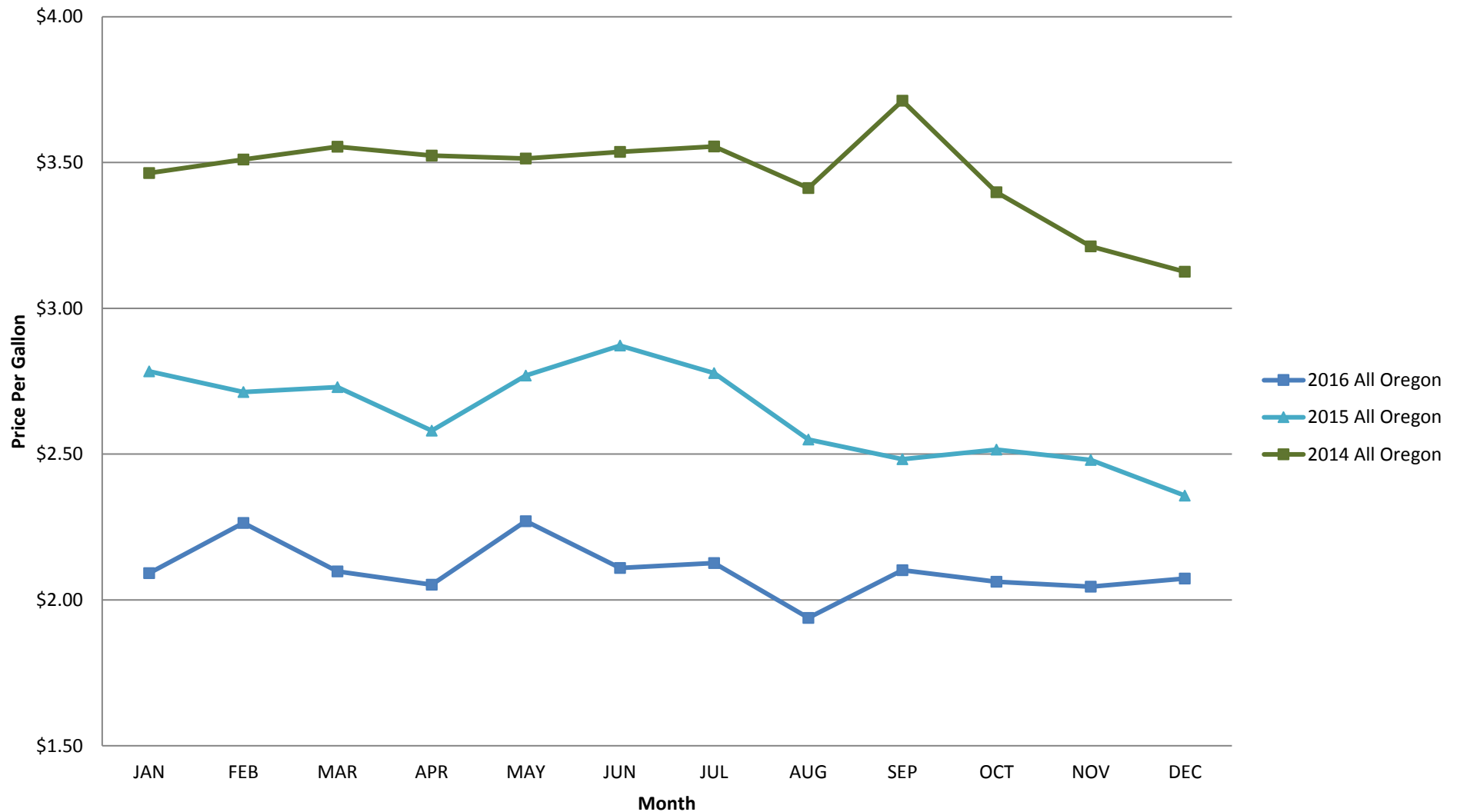


Month	Maximum	Mean	Minimum	Standard Deviation	Number of Fuel Suppliers Responding
JAN	\$2.42	\$1.84	\$1.48	\$0.41	4
FEB	\$1.69	\$1.51	\$1.36	\$0.17	4
MAR	\$1.59	\$1.46	\$1.37	\$0.10	4
APR	\$1.66	\$1.52	\$1.40	\$0.12	4
MAY	\$2.24	\$1.89	\$1.66	\$0.26	4
JUN	\$2.32	\$2.17	\$1.98	\$0.17	4
JUL	\$2.20	\$2.10	\$2.01	\$0.10	4
AUG	\$2.01	\$1.85	\$1.72	\$0.15	4
SEP	\$2.29	\$2.07	\$1.87	\$0.19	4
OCT	\$2.04	\$1.94	\$1.84	\$0.11	4
NOV	\$2.25	\$2.08	\$1.89	\$0.17	4
DEC	\$2.20	\$2.07	\$1.96	\$0.13	4



## **2014-2016 Regional-Level Summary for Oregon**

**2014 - 2016 Oregon Fuel Prices State-Level Summaries**  
**Average Before-Tax Cash Price Based on the Purchase of 600 Gallons of #2 Marine Diesel**



## Regional-Level Summary for Oregon

---

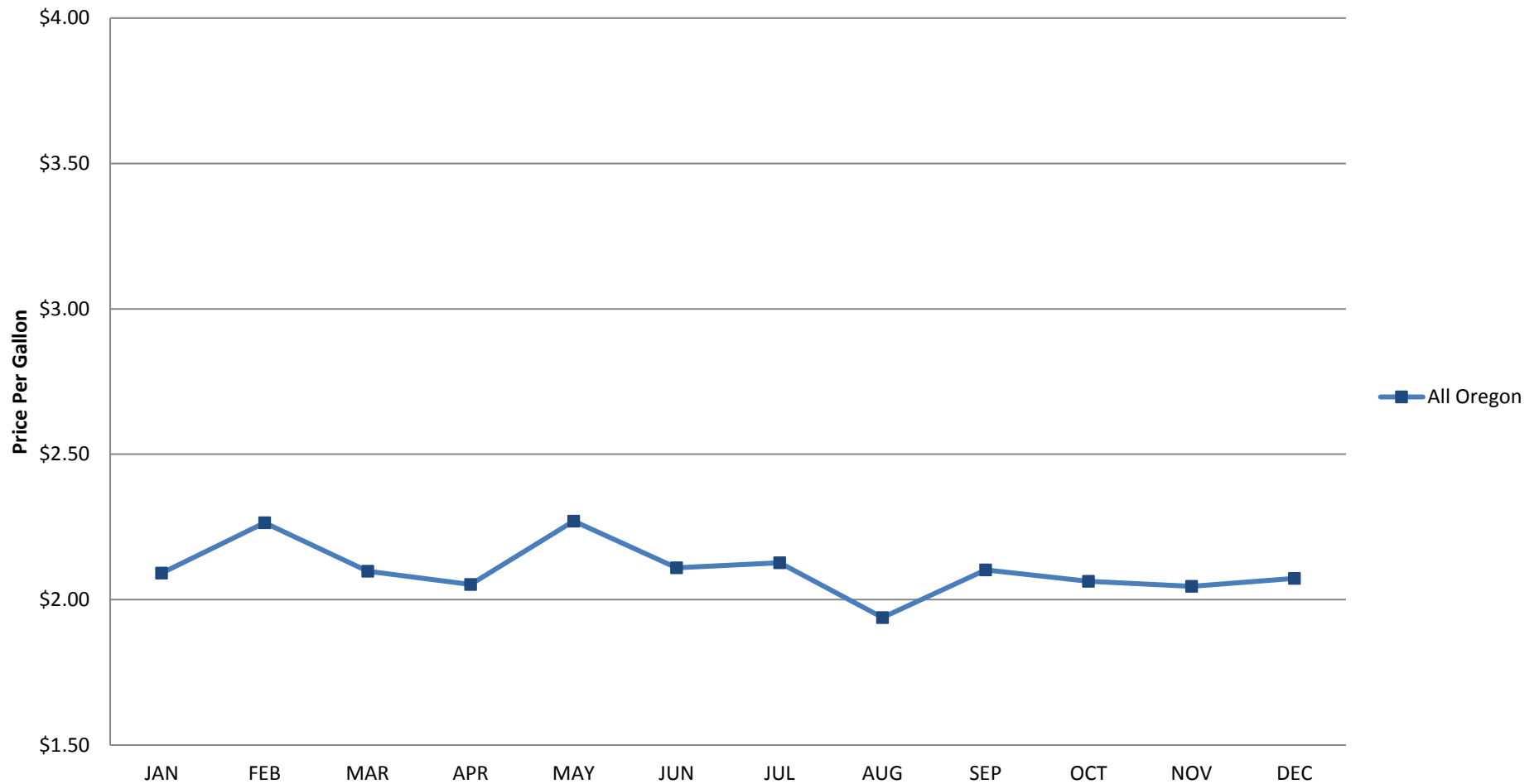
The ports in Oregon are grouped into one region:

### All Oregon

Astoria  
Newport  
Florence  
Winchester Bay

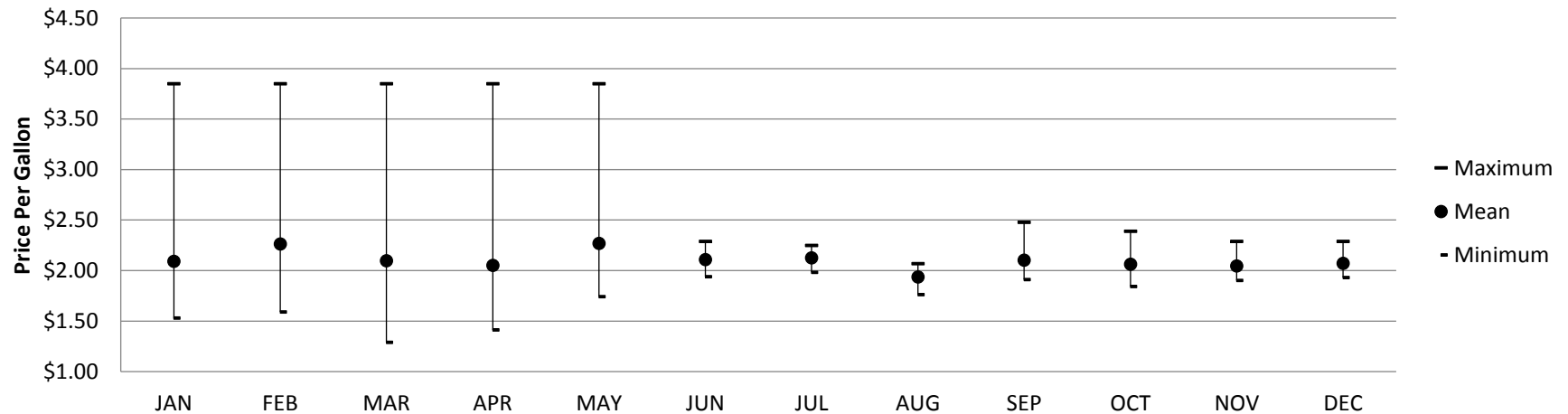
2016	JAN	FEB	MAR	APR	MAY	JUN	JUL	AUG	SEP	OCT	NOV	DEC
All Oregon	\$2.09	\$2.26	\$2.10	\$2.05	\$2.27	\$2.11	\$2.13	\$1.94	\$2.10	\$2.06	\$2.05	\$2.07
2015	JAN	FEB	MAR	APR	MAY	JUN	JUL	AUG	SEP	OCT	NOV	DEC
All Oregon	\$2.78	\$2.71	\$2.73	\$2.58	\$2.77	\$2.87	\$2.78	\$2.55	\$2.48	\$2.52	\$2.48	\$2.36
2014	JAN	FEB	MAR	APR	MAY	JUN	JUL	AUG	SEP	OCT	NOV	DEC
All Oregon	\$3.46	\$3.51	\$3.55	\$3.52	\$3.51	\$3.54	\$3.56	\$3.41	\$3.71	\$3.40	\$3.21	\$3.13

**2016 Oregon Fuel Prices State-Level Summaries**  
**Average Before-Tax Cash Price Based on the Purchase of 600 Gallons of #2**  
**Marine Diesel**



## 2016 All Oregon

### 2016 All Oregon Monthly Maximum, Mean, Minimum Before-Tax Cash Price Based on the Purchase of 600 Gallons of #2 Marine Diesel

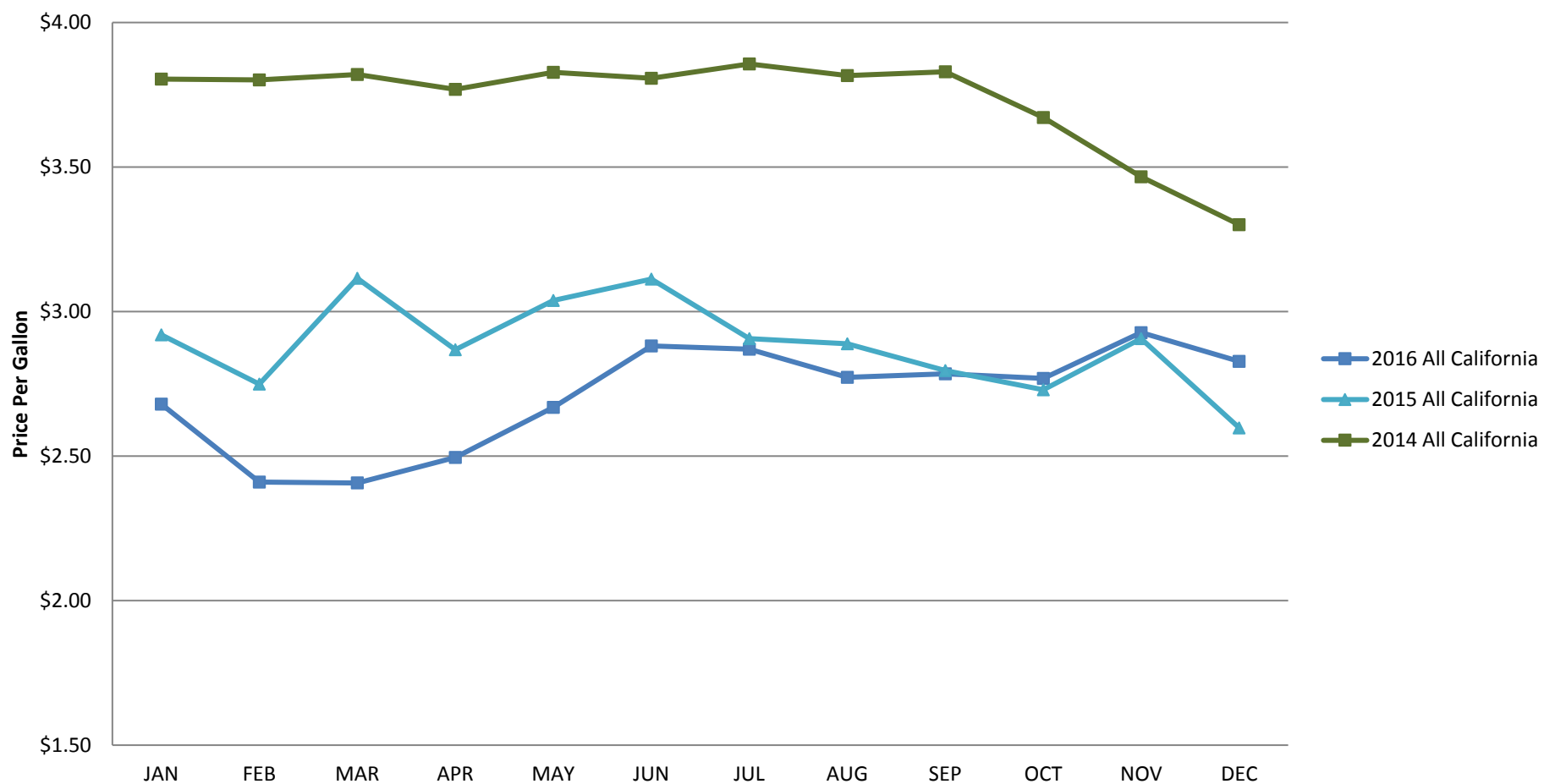


Month	Maximum	Mean	Minimum	Standard Deviation	Number of Fuel Suppliers Responding
JAN	\$ 3.85	\$ 2.09	\$ 1.53	\$ 0.99	5
FEB	\$ 3.85	\$ 2.26	\$ 1.59	\$ 1.07	4
MAR	\$ 3.85	\$ 2.10	\$ 1.29	\$ 1.18	4
APR	\$ 3.85	\$ 2.05	\$ 1.41	\$ 1.01	5
MAY	\$ 3.85	\$ 2.27	\$ 1.74	\$ 0.89	5
JUN	\$ 2.29	\$ 2.11	\$ 1.94	\$ 0.17	5
JUL	\$ 2.25	\$ 2.13	\$ 1.98	\$ 0.11	5
AUG	\$ 2.07	\$ 1.94	\$ 1.76	\$ 0.12	5
SEP	\$ 2.48	\$ 2.10	\$ 1.91	\$ 0.23	5
OCT	\$ 2.39	\$ 2.06	\$ 1.84	\$ 0.21	5
NOV	\$ 2.29	\$ 2.05	\$ 1.90	\$ 0.17	4
DEC	\$ 2.29	\$ 2.07	\$ 1.93	\$ 0.15	4



## **2014-2016 Regional-Level Summary for California**

**2014 - 2016 California Fuel Prices State-Level Summaries**  
**Average Before-Tax Cash Price Based on the Purchase of 600 Gallons of #2**  
**Marine Diesel**



## 2016 All California

---

The ports in California are grouped into one region:

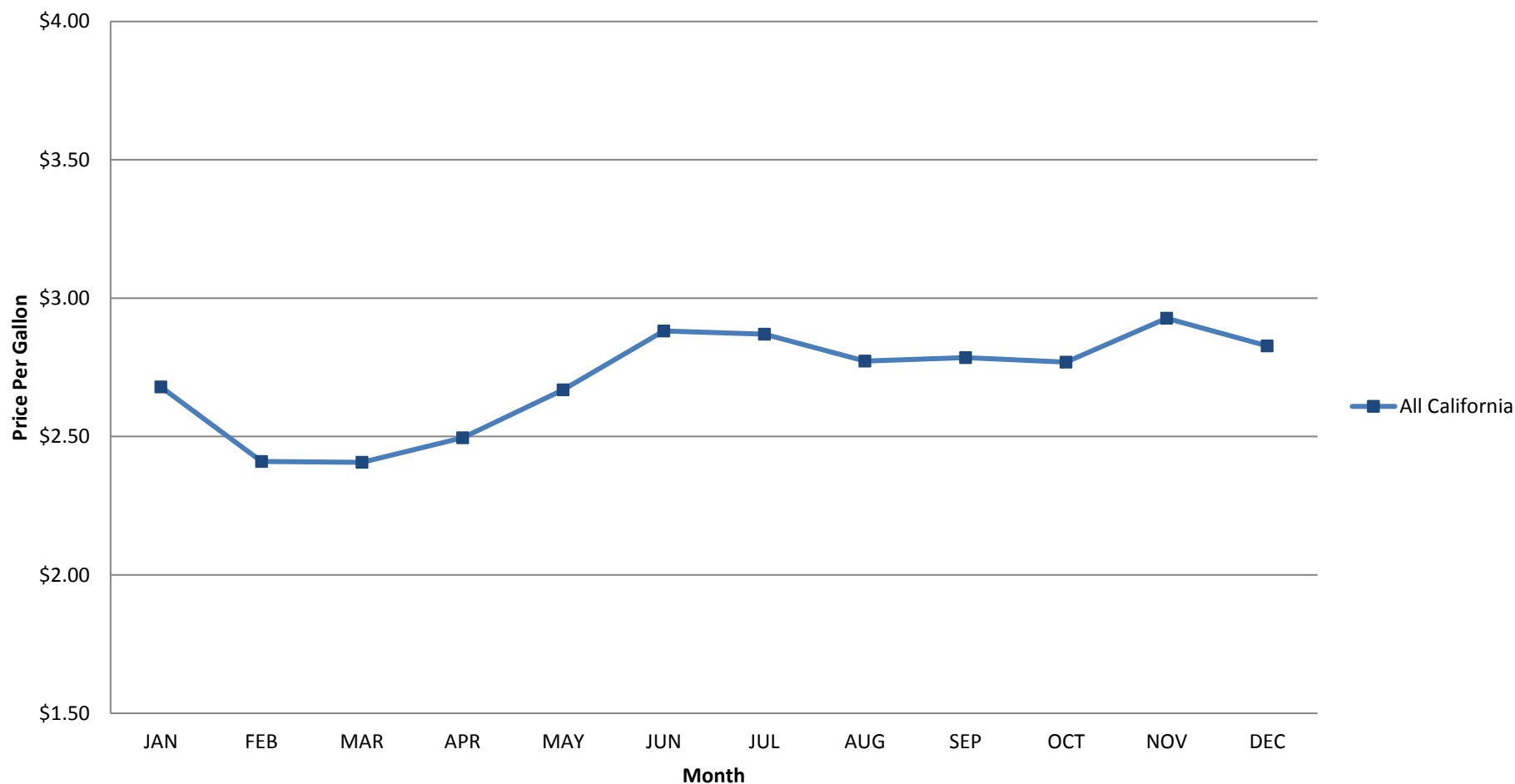
### All California

Bodega Bay  
Crescent City  
Eureka  
Morro Bay  
Moss Landing  
Port Hueneme  
San Francisco  
San Pedro  
Santa Barbara  
Sausalito

<b>2016</b>	<b>JAN</b>	<b>FEB</b>	<b>MAR</b>	<b>APR</b>	<b>MAY</b>	<b>JUN</b>	<b>JUL</b>	<b>AUG</b>	<b>SEP</b>	<b>OCT</b>	<b>NOV</b>	<b>DEC</b>
<b>All California</b>	\$2.68	\$2.41	\$2.41	\$2.50	\$2.67	\$2.88	\$2.87	\$2.77	\$2.78	\$2.77	\$2.93	\$2.83
<b>2015</b>	<b>JAN</b>	<b>FEB</b>	<b>MAR</b>	<b>APR</b>	<b>MAY</b>	<b>JUN</b>	<b>JUL</b>	<b>AUG</b>	<b>SEP</b>	<b>OCT</b>	<b>NOV</b>	<b>DEC</b>
<b>All California</b>	\$2.92	\$2.75	\$3.11	\$2.87	\$3.04	\$3.11	\$2.91	\$2.89	\$2.80	\$2.73	\$2.91	\$2.60
<b>2014</b>	<b>JAN</b>	<b>FEB</b>	<b>MAR</b>	<b>APR</b>	<b>MAY</b>	<b>JUN</b>	<b>JUL</b>	<b>AUG</b>	<b>SEP</b>	<b>OCT</b>	<b>NOV</b>	<b>DEC</b>
<b>All California</b>	\$3.80	\$3.80	\$3.82	\$3.77	\$3.83	\$3.81	\$3.86	\$3.82	\$3.83	\$3.67	\$3.47	\$3.30

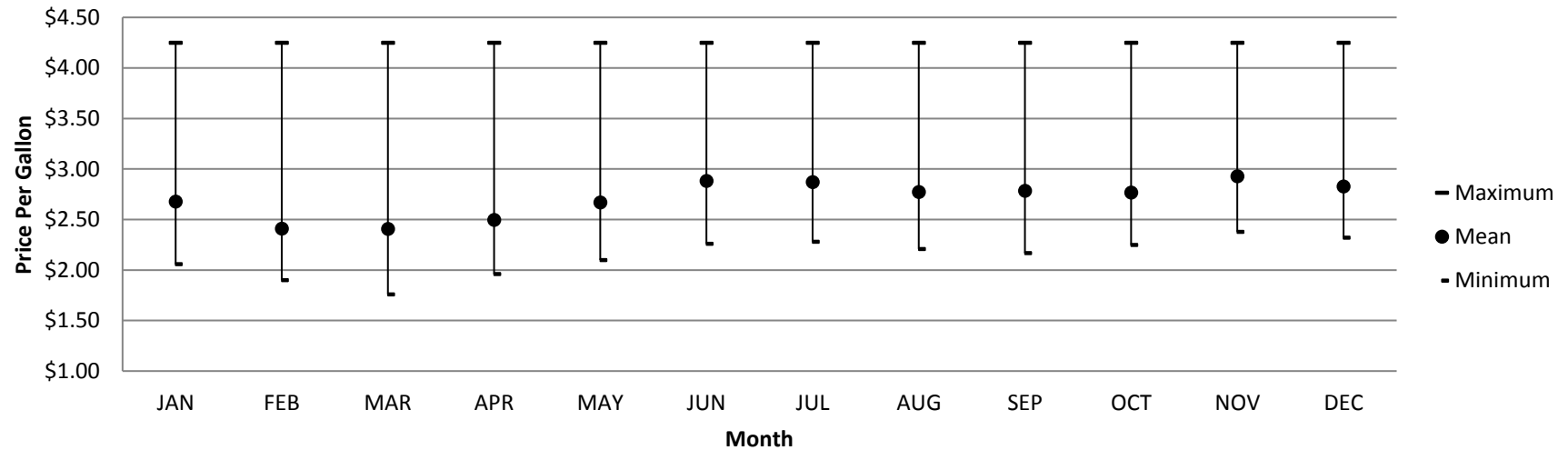
# 2016 California Fuel Prices State-Level Summaries

## Average Before-Tax Cash Price Based on the Purchase of 600 Gallons of #2 Marine Diesel



## 2016 All California

### 2016 All California Monthly Maximum, Mean, Minimum Before-Tax Cash Price Based on the Purchase of 600 Gallons of #2 Marine Diesel



Month	Maximum	Mean	Minimum	Standard Deviation	Number of Fuel Suppliers Responding
JAN	\$4.25	\$2.68	\$2.06	\$0.74	7
FEB	\$4.25	\$2.41	\$1.90	\$0.73	9
MAR	\$4.25	\$2.41	\$1.76	\$0.80	8
APR	\$4.25	\$2.50	\$1.96	\$0.75	8
MAY	\$4.25	\$2.67	\$2.10	\$0.70	8
JUN	\$4.25	\$2.88	\$2.26	\$0.63	8
JUL	\$4.25	\$2.87	\$2.28	\$0.63	8
AUG	\$4.25	\$2.77	\$2.21	\$0.63	8
SEP	\$4.25	\$2.78	\$2.17	\$0.65	8
OCT	\$4.25	\$2.77	\$2.25	\$0.65	8
NOV	\$4.25	\$2.93	\$2.38	\$0.58	8
DEC	\$4.25	\$2.83	\$2.32	\$0.58	9

